

ingunt *U*niversa corpis no *tra* ho *ria*



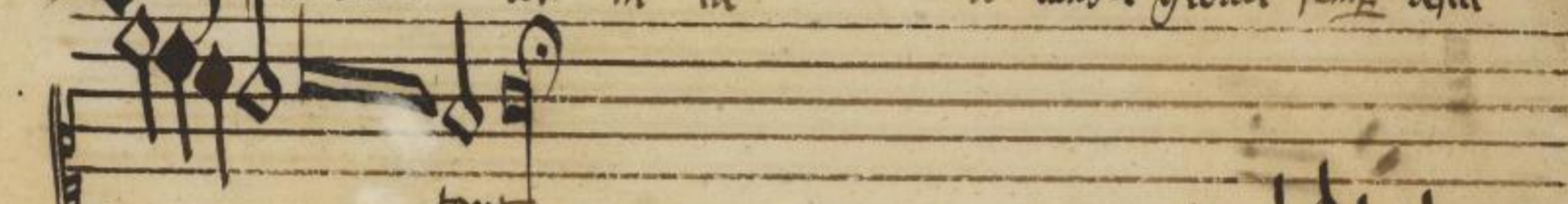
is ~~vox~~ vox leticie p/b



nat



ac domo *te* *ni* *ta* *ti* laus & gloria semp *re* *gul*



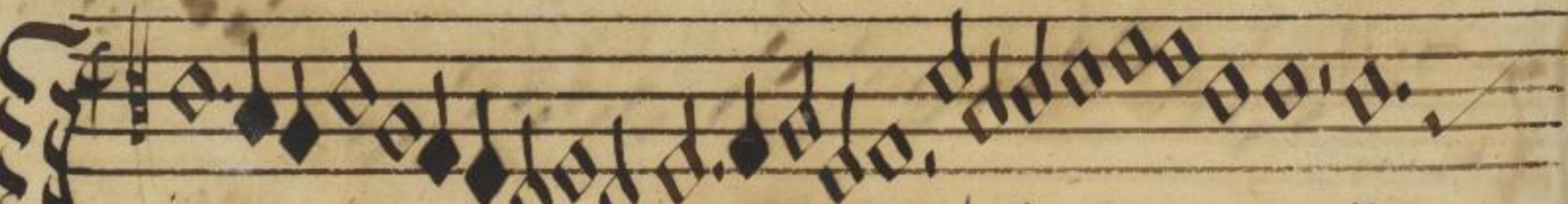
tant



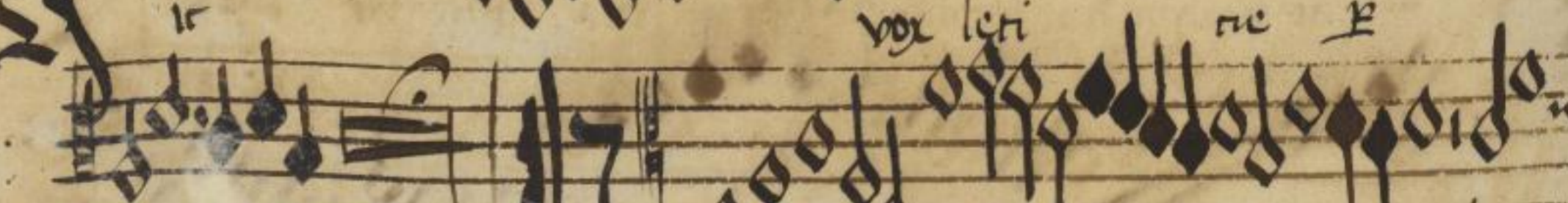
*U*niversa *U*niversa corpis no



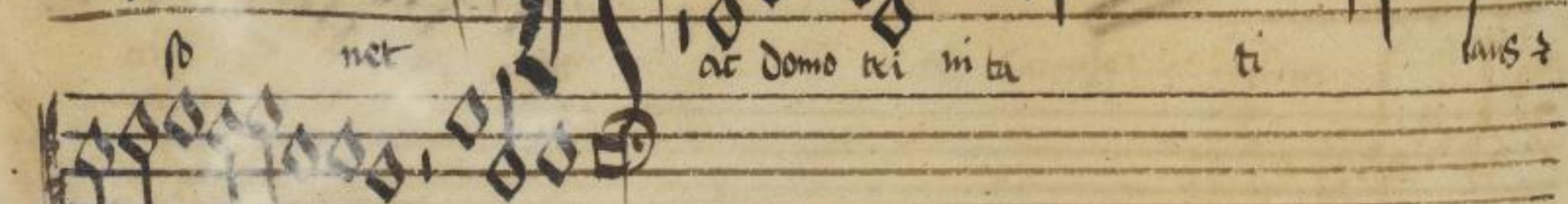
ria



is vox leti *ce* *E*



net ac domo *te* *ni* *ta* *ti* laus &



no *ri* a semp *re* *gul*