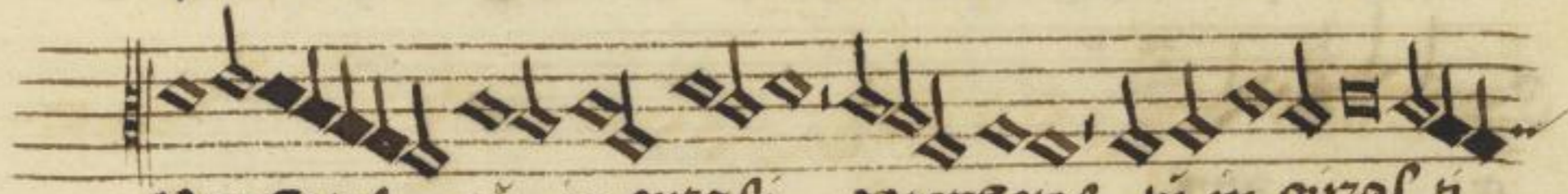




Vt vide si Supplex genitor possit a nobe



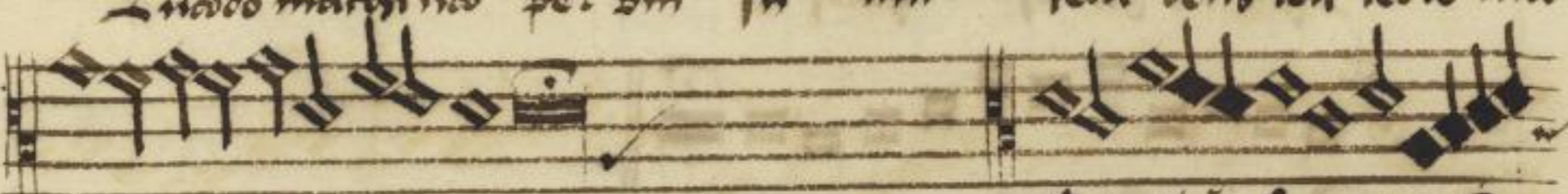
Propbetas in in spiras in in spiras in



ut pioni a resti pammissent inata



Quando maxima per vni su um fecit deus celi terre ma



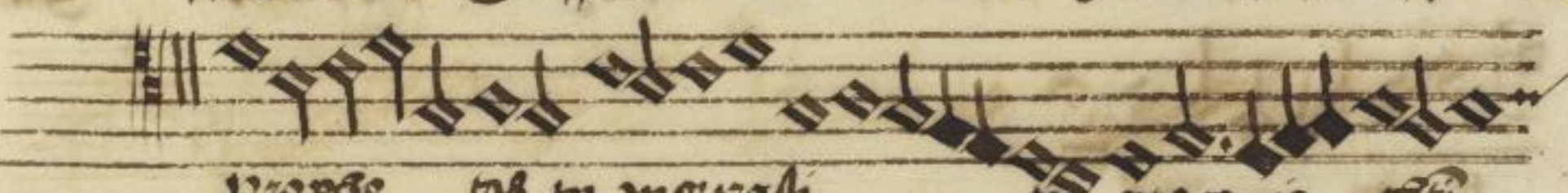
rum In diu sum per ling



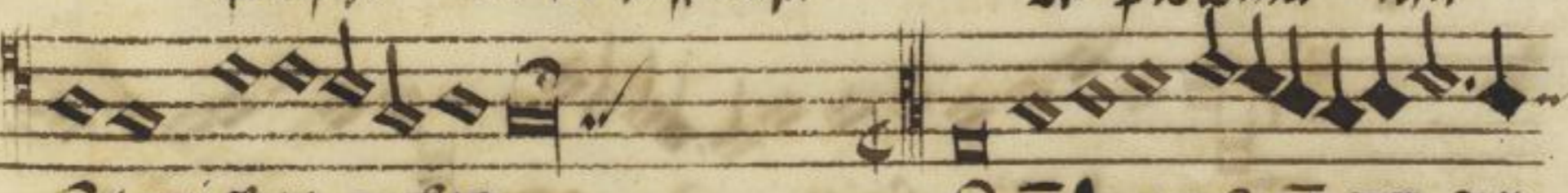
uas un diu et in me ad v nasti domie



Vt vide si Suppre mis genitor possit A nobe



Propse tas in in spiras ut piona in



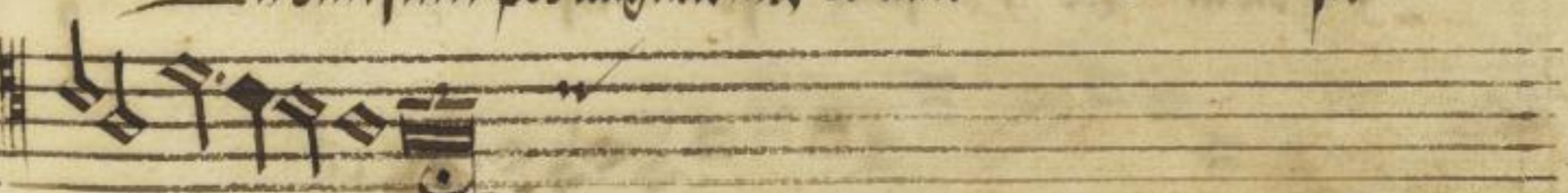
pammissent inata Quando maxima per ver



su sum fe at deus celi terre ma in



In diu sum per linguas in et tunc in v nasti do



rum