

Violoncello.

Aria tutti

Handwritten musical notation for the 'Aria tutti' section, consisting of five staves of music in C major and 3/4 time. The notation includes various rhythmic values such as eighth and sixteenth notes, and rests.

Recit:

Handwritten musical notation for the 'Recit' section, consisting of two staves of music in C major and 3/4 time. The notation is simpler, primarily using quarter and eighth notes.

Volti



Aria Alto.

A handwritten musical score for an Alto Aria, consisting of 12 staves of music. The notation is in a cursive style, typical of 18th-century manuscripts. The key signature is one sharp (F#), and the time signature is 3/4. The music features a variety of rhythmic patterns, including eighth and sixteenth notes, and rests. There are several dynamic markings, such as 'p' (piano) and 'f' (forte), and some phrasing slurs. A small 'bis' marking is visible above the third staff. The paper is aged and shows some wear, particularly at the edges.



Recit: Ten:

Handwritten musical score for a recitative section, consisting of seven staves of music. The notation is in a single system with a common time signature (C) and a key signature of one sharp (F#). The music features a variety of note values, including eighth and sixteenth notes, and rests. There are some markings above the first staff, possibly indicating dynamics or performance instructions. The paper shows signs of age and wear.

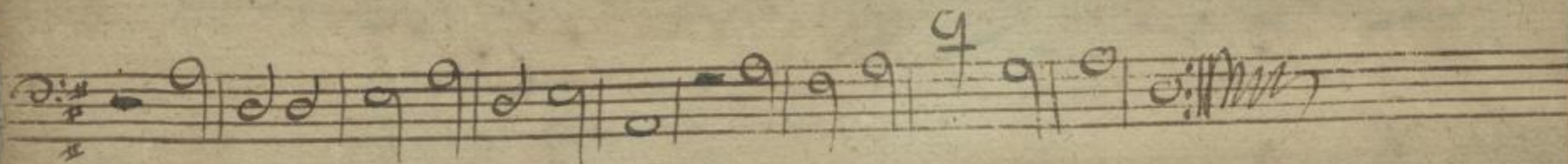
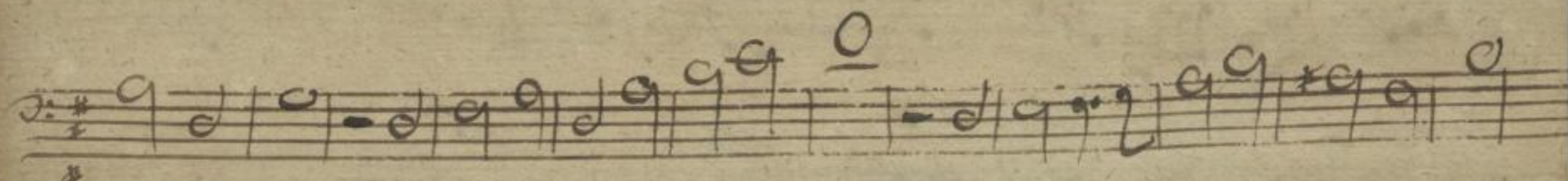
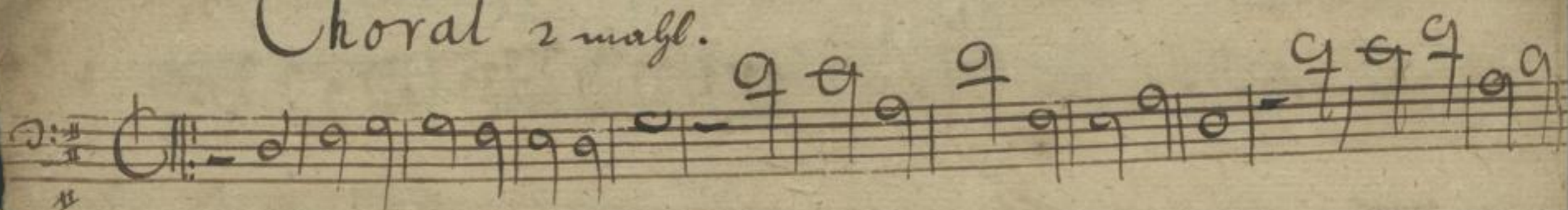
Aria Canto.

Handwritten musical score for an aria section, consisting of nine staves of music. The notation is in a single system with a common time signature (C) and a key signature of one sharp (F#). The music is marked "allegro" and features a variety of note values, including eighth and sixteenth notes, and rests. There are some markings above the first staff, possibly indicating dynamics or performance instructions. The paper shows signs of age and wear.

3 Up. instr. Verte.



# Choral 2 mahl.





anß, anß, laßt uns jänßzen, laßt uns jänßzen, anß, anß,

anß, laßt uns jänß

gen mit glänßigen Thon, der Hölle

zum Dörr, dem Tod zum Lofur, der Hölle zum Verthe dem

Tode zum Lofur, dem Tod zum Lofur. den Tod mit

erfolgem für beide gelovigen, fort beide bezwünzen, w. beide be,

zinger, und beide bez - da bezwünzen; be lobet der Dribant,

und bringet uns fent ab Leben und wolle Ge,

mige zum Loben, ab lobet der Dribant, w. bringet und

fent ab Leben und wolle Gemige zum Lob

be, und wolle Ge

mige zum Loben.

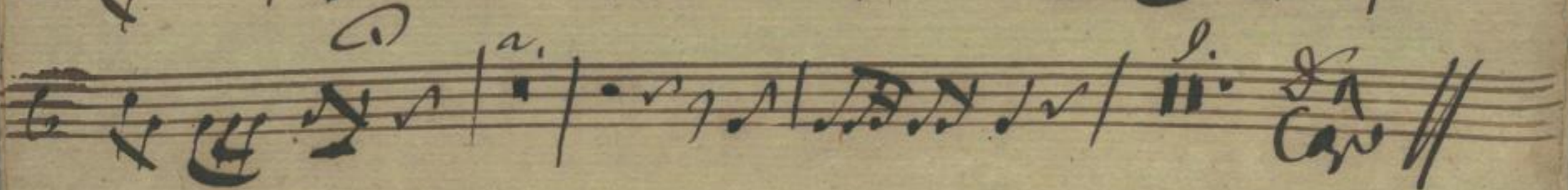
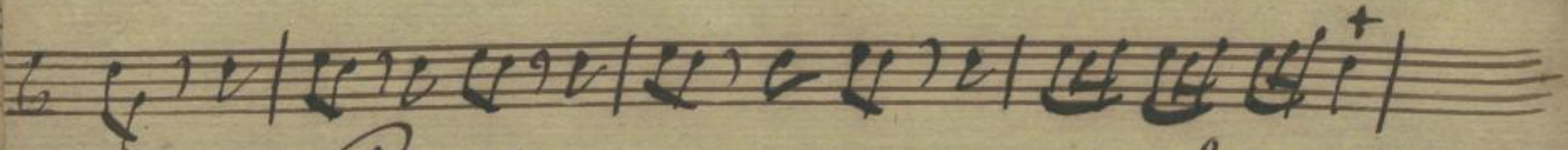
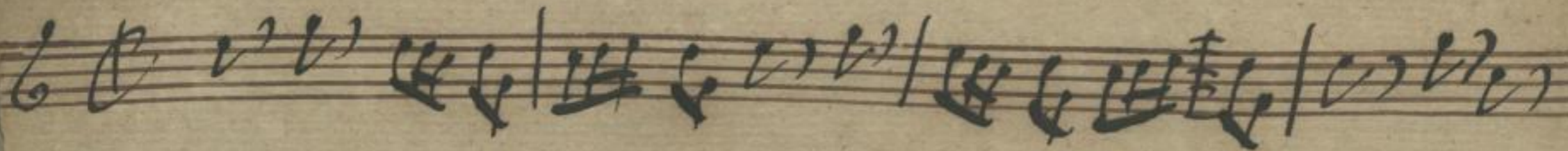


Handwritten text in a cursive script, likely a historical document or manuscript. The text is written in dark ink on aged, yellowish paper. The script is dense and appears to be a form of shorthand or a specific dialect. The text is arranged in several lines, with some characters being larger and more prominent than others. The overall appearance is that of a well-used, possibly legal or administrative, document.



Chetti.

Clarim. 1.



Clar. Bass //

Mus. 2392-E-560b





Handwritten musical notation on a five-line staff, featuring various note values and stems.

Handwritten musical notation on a five-line staff, featuring various note values and stems.

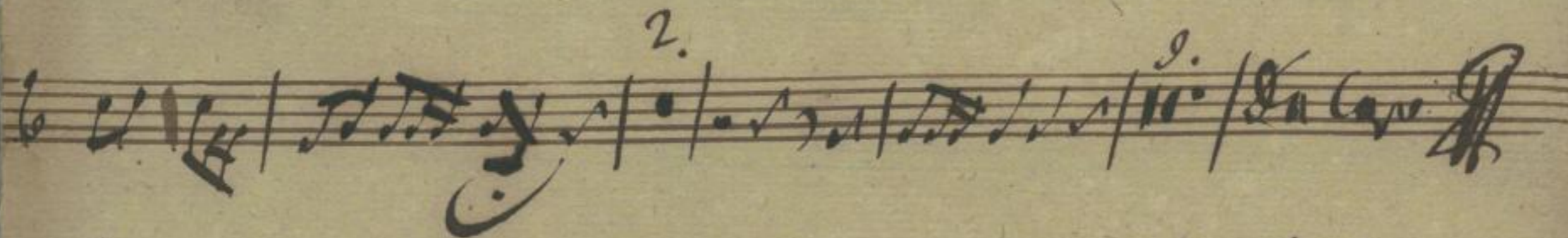
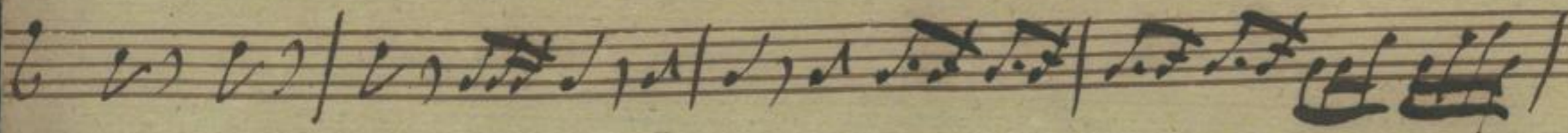
Handwritten musical notation on a five-line staff, featuring various note values and stems.

Handwritten musical notation on a five-line staff, featuring various note values and stems.



Clarim. 2<sup>da</sup>.

Tutti.



rit. tac. // tris tac. // rit. tac. // tris tac. // Tutti: *sempre*

MUS. 2392-E-5606



6

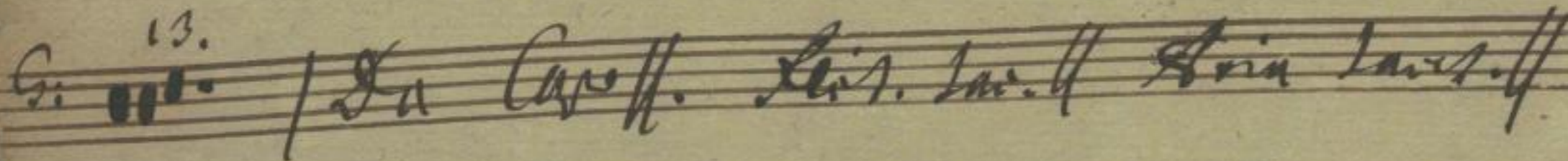
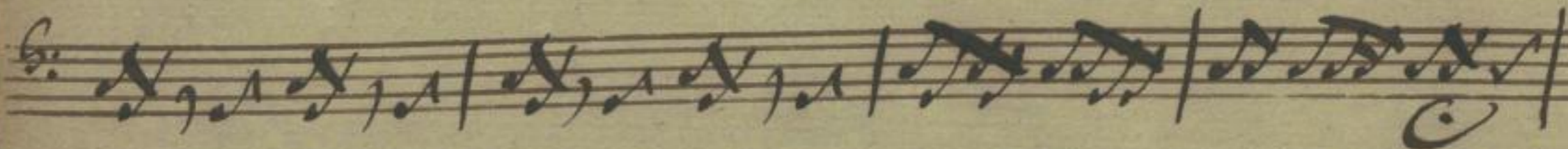
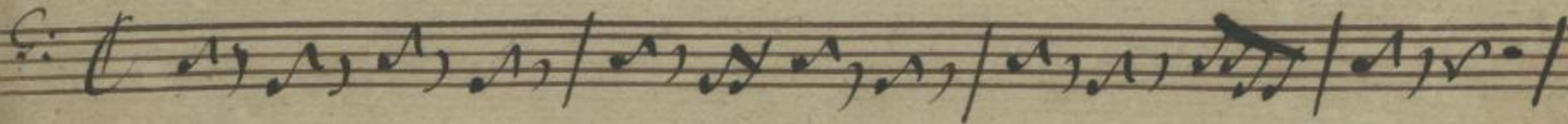


A page of handwritten musical notation on five staves. The notation is written in dark ink on aged, yellowish paper. The first staff contains a series of notes and rests, with some notes having stems pointing downwards. The second staff begins with a clef-like symbol and contains notes with stems pointing upwards. The third staff starts with a clef-like symbol and contains notes with stems pointing upwards. The fourth staff begins with a clef-like symbol and contains notes with stems pointing upwards. The fifth staff contains notes with stems pointing upwards. The handwriting is somewhat cursive and shows signs of being a working draft.



*Futti*

*Symp.*



Rit. Inc. // Aria Inc. // Futti repeat.

Mus. 2392-E-560b



7



