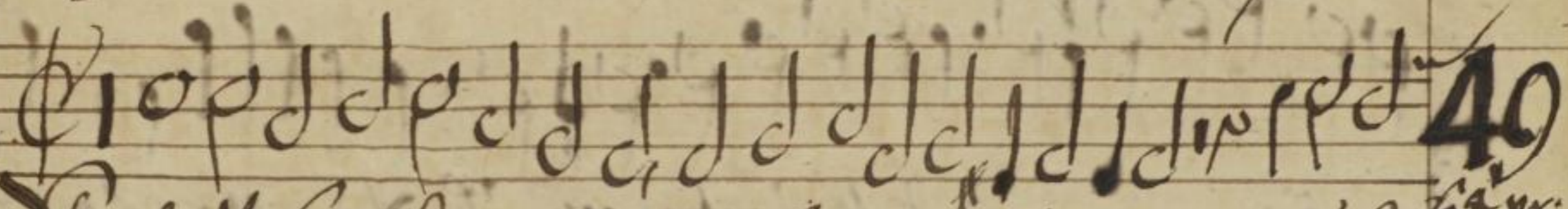
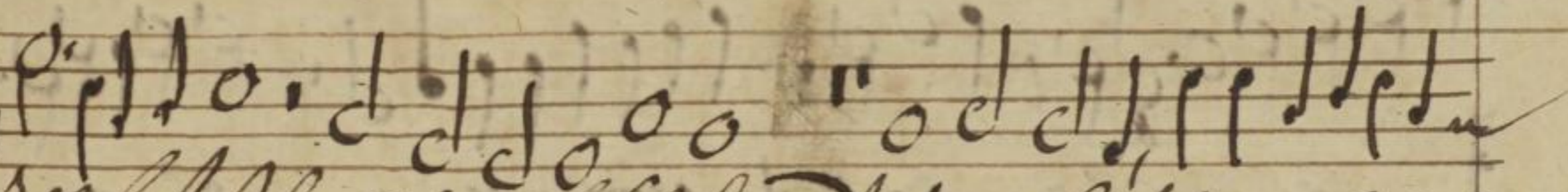


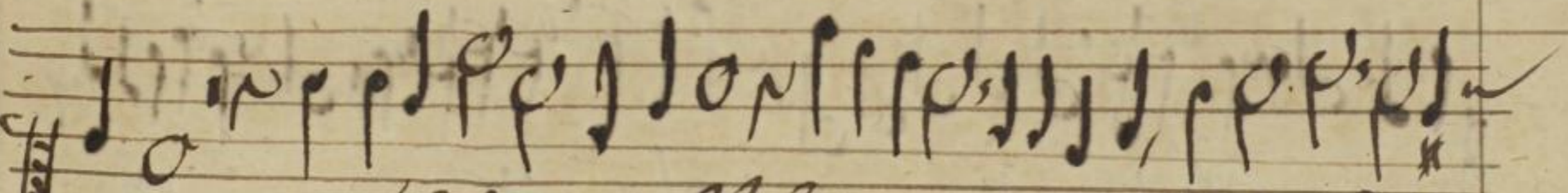
Handwritten text in a cursive script, likely a vocal line or a specific instruction for the music.



Handwritten text in a cursive script, possibly a vocal line or a specific instruction for the music.



Handwritten text in a cursive script, likely a vocal line or a specific instruction for the music.



Handwritten text in a cursive script, likely a vocal line or a specific instruction for the music.