





W<sup>er</sup> Z<sup>ur</sup> D<sup>ien</sup>

Aue Regina : A.

C. A. S. B.

2. Violini  
1. Viola  
col  
Organo.

Auctore Sig. Aufsemaier  
Aula Principalis et Ecclesie  
Cathedralis S. Sa. Cap:  
Magistro.



1

Mus 2005-E-2

2

Handwritten musical score for voice and instruments. The score includes staves for Soprano, Alto, Tenor, and two other parts. The lyrics are:

*ad Soprano*

*ad alto*

*ad Tenore*

*Aue Regina celo = rum aue Regina celorum Regina celo =*

*Aue Regina celo = rum celo = rum regina celo = rum*

*Aue Regina celo =*

*Aue Regina celo = rum celo =*

*R.*

MUS 2005-E-2

Handwritten musical score on aged paper, featuring five staves of music. The lyrics are written below the notes in a cursive hand. The text includes: *- rum*, *Aue Domina Angelo = - rum an = gelo = rum ange =*, *que domina angelo - - - rum aue Domina angelo - - rum ange*, *- rum aue Domina Angelo = - - rum angelo = rum aue Domina Angelo = - - rum an =*, *rum*, *Aue Domina Angelo =*, and *rum an =*. The music consists of various note values and rests, with some notes beamed together. The page is numbered '4' at the bottom center, and '76' is written at the bottom right.

Handwritten musical score on five staves. The lyrics are written below the notes. The text includes:

lo = rum

Salve radix Sal = ue por = ta

ge = corum

Salve radix Sal = ue por = ta

Salve radix Salve por = ta

Salve radix Salve

4# 76 76

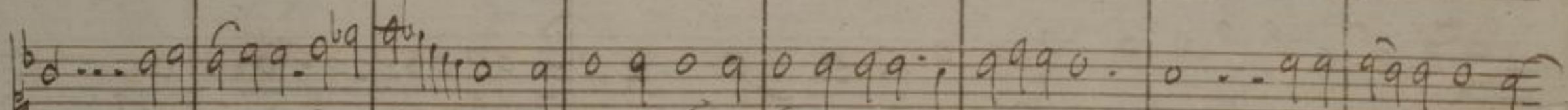
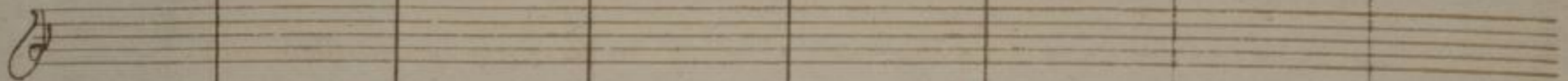
ta ex qua mundo lux e' or- ta ex qua Mun- do lux e' or tu  
 ta ex qua mundo lux e' or ta ex qua Mun- do lux ex- or- tu ex qua  
 por- ta ex qua mundo lux e' or ta ex qua mundo - lux e' or ta ex  
 porta ex qua mundo lux e' or - ta ex



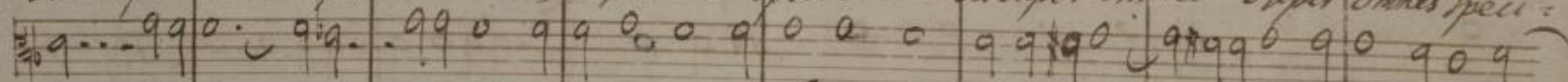
ex qua mundo lux e' orta lux e' or = ta Gaudete virgo : glo = rio =  
 mundo lux e' or = ta lux e' or = ta : glo = rio =  
 qua or = ta lux e' or = ta : glo = rio =  
 qua mundo lux e' or = ta lux e' or = ta Gaudete virgo : glo = rio =

9 7 8 43 più allegro

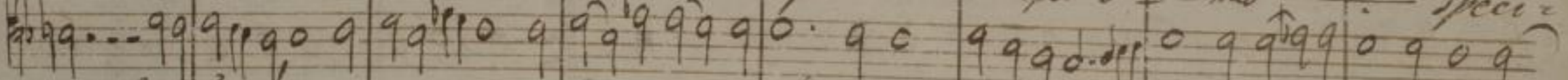
col soprano



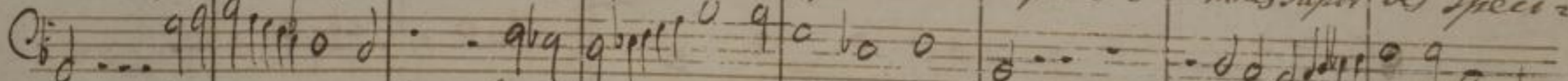
sa super omnes super o = - mnes super oes specio = - sa super omnes super omnes speci =



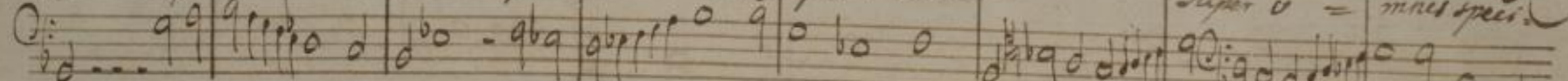
sa super oes super o = - mnes specio sa super o = - mnes specio



sa super oes super o = - mnes specio sa super o = - mnes specio



sa super o = - mnes specio sa super o = - mnes specio



sa super o = - mnes specio sa super o = - mnes specio

-osa super o = - mnes super oes specio = - sa super o = - is specio = sa specio = sa  
 - o = sa  
 - o = sa super o = - mnes omnes specio = sa super o = - mnes speciosa, speciosa  
 - o = sa  
 Super o = - mnes speciosa, Super o = - mnes speciosa speciosa

*col soprano*

*col alto*

Vale ô valde deo =

Vale ô valde deo = ra ô valde de

Vale ô valde deo = ra valde deo = ra ô valde de

Vale ô valde deo = ra deo = ra ô valde deo = ra ô valde deo =

Vale ô valde deo = ra deo = ra ô valde deo = ra ô valde deo =

ra vale o valde deco = ra et pro  
 co = ra o valde deco = ra o valde deco = ra et pro nobis  
 ra et pro nobis (ri =)

*nobis scri = — stu ÷ exo = ra*      *et pro nobis scri = stu nobis christu exo = ra*  
*Chri = stu nobis scri = stu exo ra*      *et pro nobis scri = — stum nobis chri = — stu ÷ exo ra*  
*et pro nobis christu nobis christu exo ra*      *et pro nobis christum nobis christu ÷ exo ra nobis*  
*— — stu nobis scri = — — stu exo ra*      *et pro nobis scri = — — stu ÷ exo ra*

nobis Chri-  
 et pro nobis Chri-  
 Chri-  
 et pro nobis Chri-  
 et pro nobis Chri-

-stu exo- ra  
 -stu exo- ra  
 -stu exo- ra  
 -stu exo- ra  
 -stu exo- ra

et pro nobis Chri-  
 et pro nobis Chri-  
 et pro nobis Chri-  
 et pro nobis Chri-  
 et pro nobis Chri-

-stu exo- ra  
 -stu exo- ra  
 -stu exo- ra  
 -stu exo- ra  
 -stu exo- ra

et pro nobis Chri-  
 et pro nobis Chri-  
 et pro nobis Chri-  
 et pro nobis Chri-  
 et pro nobis Chri-

-stu exo- ra  
 -stu exo- ra  
 -stu exo- ra  
 -stu exo- ra  
 -stu exo- ra

stu Christum exo = ra eto = ra  
 Christu Christum exo = ra eto = ra  
 -stum Christum exo = ra eto = ra  
 -stum Christu exo = ra



15

16

Sächs. Landesbibliothek  
Depositum der  
Kath. Hofkirche

*Miss. 2065*  
            
E|2

