

J. S. Bach 4

3 Clavierstücke.

1/ Fuge in Cdur, 2 Fandorfia in g moll

3/ 2 Füge mit der C-dur Sonate  
N. II.

N. 1 n. 2 sind inulclant. 30. g. 46. 5 All.

Go. 9.

11



G. G. 11.

2



Leipziger  
Stadtbibliothek



















No 15.

Groppiano

Autograph von F. W. Rust

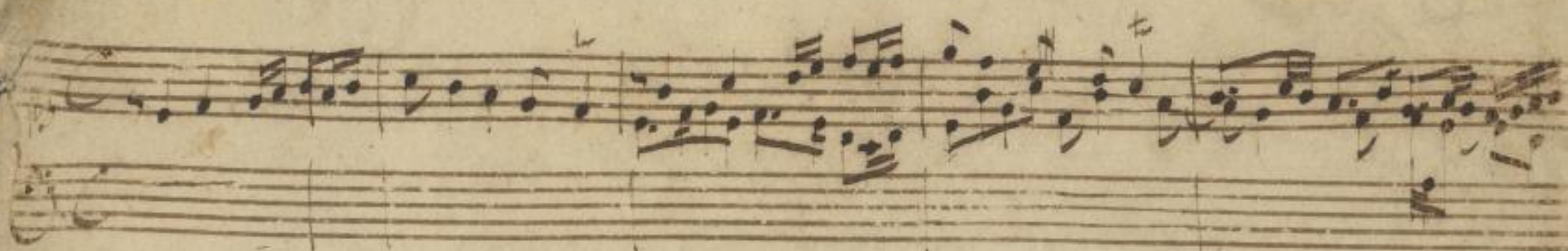
11/1, 29. Mai 1841

F. W. Rust.





Fuga et C. b. de Sign. Bach. Sebatt.









Conata ex C. di J. S. Bach.

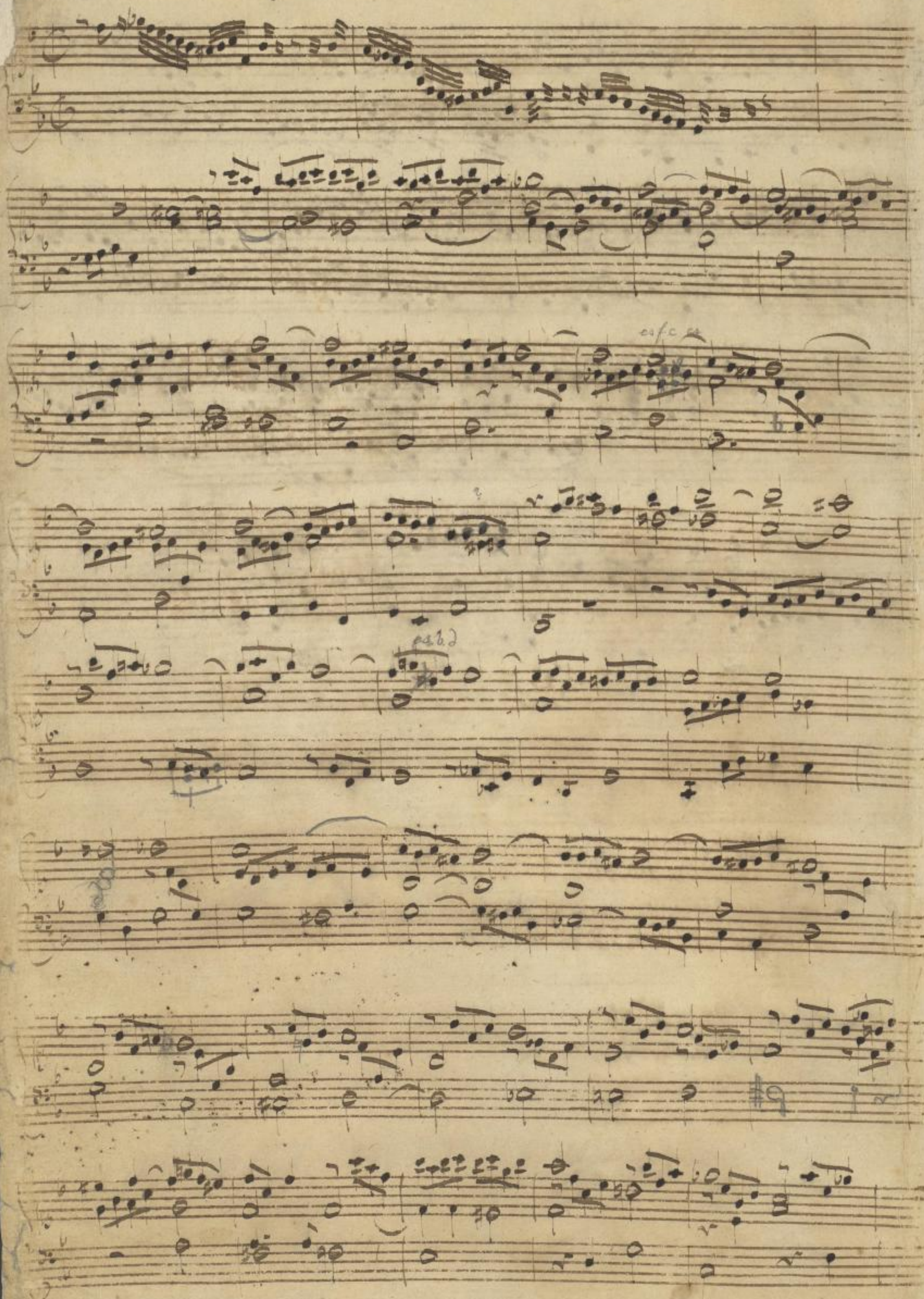
This image shows a handwritten musical score on aged, slightly stained paper. The title at the top left reads "Conata ex C. di J. S. Bach." in cursive. The score is written for three parts, likely voices or instruments, as indicated by the three staves per system. The notation is in a historical style, featuring many beamed sixteenth and thirty-second notes, suggesting a fast tempo. The first system contains the beginning of the piece. The second system has a "100" written below the first staff. The third system has a "50" written below the first staff. The fourth system has a "+" written above the first staff. The fifth system has a "30" written below the first staff. The sixth system has a "20" written below the first staff. The seventh system has a "10" written below the first staff. The eighth system has a "5" written below the first staff. The ninth system has a "1" written below the first staff. The tenth system has a "1" written below the first staff. The eleventh system has a "1" written below the first staff. The twelfth system has a "1" written below the first staff. The thirteenth system has a "1" written below the first staff. The fourteenth system has a "1" written below the first staff. The fifteenth system has a "1" written below the first staff. The sixteenth system has a "1" written below the first staff. The seventeenth system has a "1" written below the first staff. The eighteenth system has a "1" written below the first staff. The nineteenth system has a "1" written below the first staff. The twentieth system has a "1" written below the first staff. The twenty-first system has a "1" written below the first staff. The twenty-second system has a "1" written below the first staff. The twenty-third system has a "1" written below the first staff. The twenty-fourth system has a "1" written below the first staff. The twenty-fifth system has a "1" written below the first staff. The twenty-sixth system has a "1" written below the first staff. The twenty-seventh system has a "1" written below the first staff. The twenty-eighth system has a "1" written below the first staff. The twenty-ninth system has a "1" written below the first staff. The thirtieth system has a "1" written below the first staff. The thirty-first system has a "1" written below the first staff. The thirty-second system has a "1" written below the first staff. The thirty-third system has a "1" written below the first staff. The thirty-fourth system has a "1" written below the first staff. The thirty-fifth system has a "1" written below the first staff. The thirty-sixth system has a "1" written below the first staff. The thirty-seventh system has a "1" written below the first staff. The thirty-eighth system has a "1" written below the first staff. The thirty-ninth system has a "1" written below the first staff. The fortieth system has a "1" written below the first staff. The forty-first system has a "1" written below the first staff. The forty-second system has a "1" written below the first staff. The forty-third system has a "1" written below the first staff. The forty-fourth system has a "1" written below the first staff. The forty-fifth system has a "1" written below the first staff. The forty-sixth system has a "1" written below the first staff. The forty-seventh system has a "1" written below the first staff. The forty-eighth system has a "1" written below the first staff. The forty-ninth system has a "1" written below the first staff. The fiftieth system has a "1" written below the first staff. The fifty-first system has a "1" written below the first staff. The fifty-second system has a "1" written below the first staff. The fifty-third system has a "1" written below the first staff. The fifty-fourth system has a "1" written below the first staff. The fifty-fifth system has a "1" written below the first staff. The fifty-sixth system has a "1" written below the first staff. The fifty-seventh system has a "1" written below the first staff. The fifty-eighth system has a "1" written below the first staff. The fifty-ninth system has a "1" written below the first staff. The sixtieth system has a "1" written below the first staff. The sixty-first system has a "1" written below the first staff. The sixty-second system has a "1" written below the first staff. The sixty-third system has a "1" written below the first staff. The sixty-fourth system has a "1" written below the first staff. The sixty-fifth system has a "1" written below the first staff. The sixty-sixth system has a "1" written below the first staff. The sixty-seventh system has a "1" written below the first staff. The sixty-eighth system has a "1" written below the first staff. The sixty-ninth system has a "1" written below the first staff. The seventieth system has a "1" written below the first staff. The seventy-first system has a "1" written below the first staff. The seventy-second system has a "1" written below the first staff. The seventy-third system has a "1" written below the first staff. The seventy-fourth system has a "1" written below the first staff. The seventy-fifth system has a "1" written below the first staff. The seventy-sixth system has a "1" written below the first staff. The seventy-seventh system has a "1" written below the first staff. The seventy-eighth system has a "1" written below the first staff. The seventy-ninth system has a "1" written below the first staff. The eightieth system has a "1" written below the first staff. The eighty-first system has a "1" written below the first staff. The eighty-second system has a "1" written below the first staff. The eighty-third system has a "1" written below the first staff. The eighty-fourth system has a "1" written below the first staff. The eighty-fifth system has a "1" written below the first staff. The eighty-sixth system has a "1" written below the first staff. The eighty-seventh system has a "1" written below the first staff. The eighty-eighth system has a "1" written below the first staff. The eighty-ninth system has a "1" written below the first staff. The ninetieth system has a "1" written below the first staff. The ninety-first system has a "1" written below the first staff. The ninety-second system has a "1" written below the first staff. The ninety-third system has a "1" written below the first staff. The ninety-fourth system has a "1" written below the first staff. The ninety-fifth system has a "1" written below the first staff. The ninety-sixth system has a "1" written below the first staff. The ninety-seventh system has a "1" written below the first staff. The ninety-eighth system has a "1" written below the first staff. The ninety-ninth system has a "1" written below the first staff. The hundredth system has a "1" written below the first staff.



Handwritten musical score on aged paper, featuring five systems of staves. The notation includes various musical symbols such as notes, rests, and clefs. The word "Pedal" is written below the first system, and "Fine" is written at the end of the fifth system.



Fantasia in Gb Di Joh. Seb. Bach



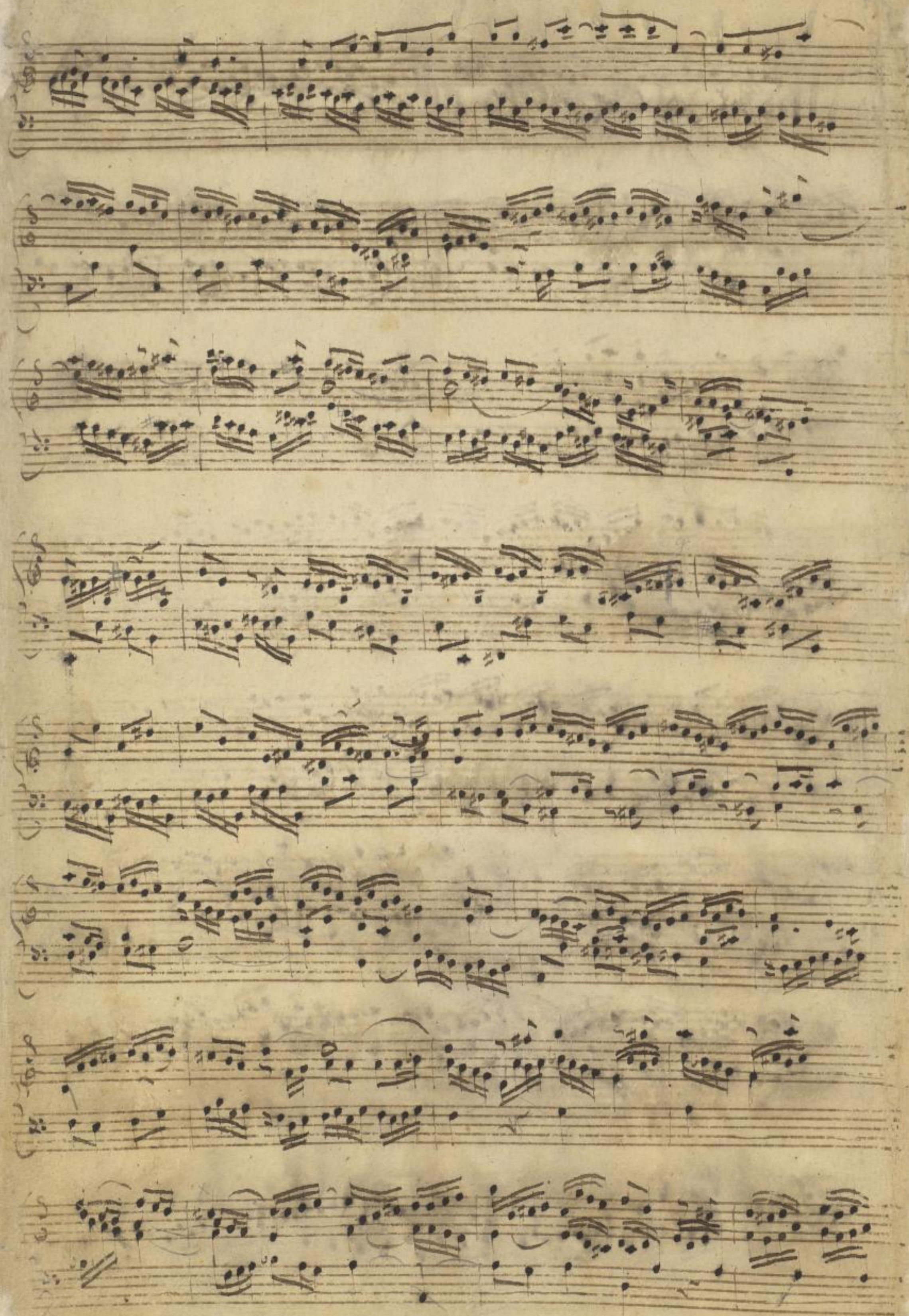


Fuga.

13

This image shows a page from a handwritten musical manuscript, specifically a fugue. The page is numbered '13' in the top right corner. The title 'Fuga.' is written in cursive at the top left. The music is arranged in eight systems, each consisting of two staves. The notation is dense and complex, featuring many beamed sixteenth and thirty-second notes, indicating a fast tempo. The ink is dark brown on aged, slightly yellowed paper. The handwriting is elegant and characteristic of the 18th century. The bottom of the page shows some faint, illegible markings, possibly 'h a h a n'.

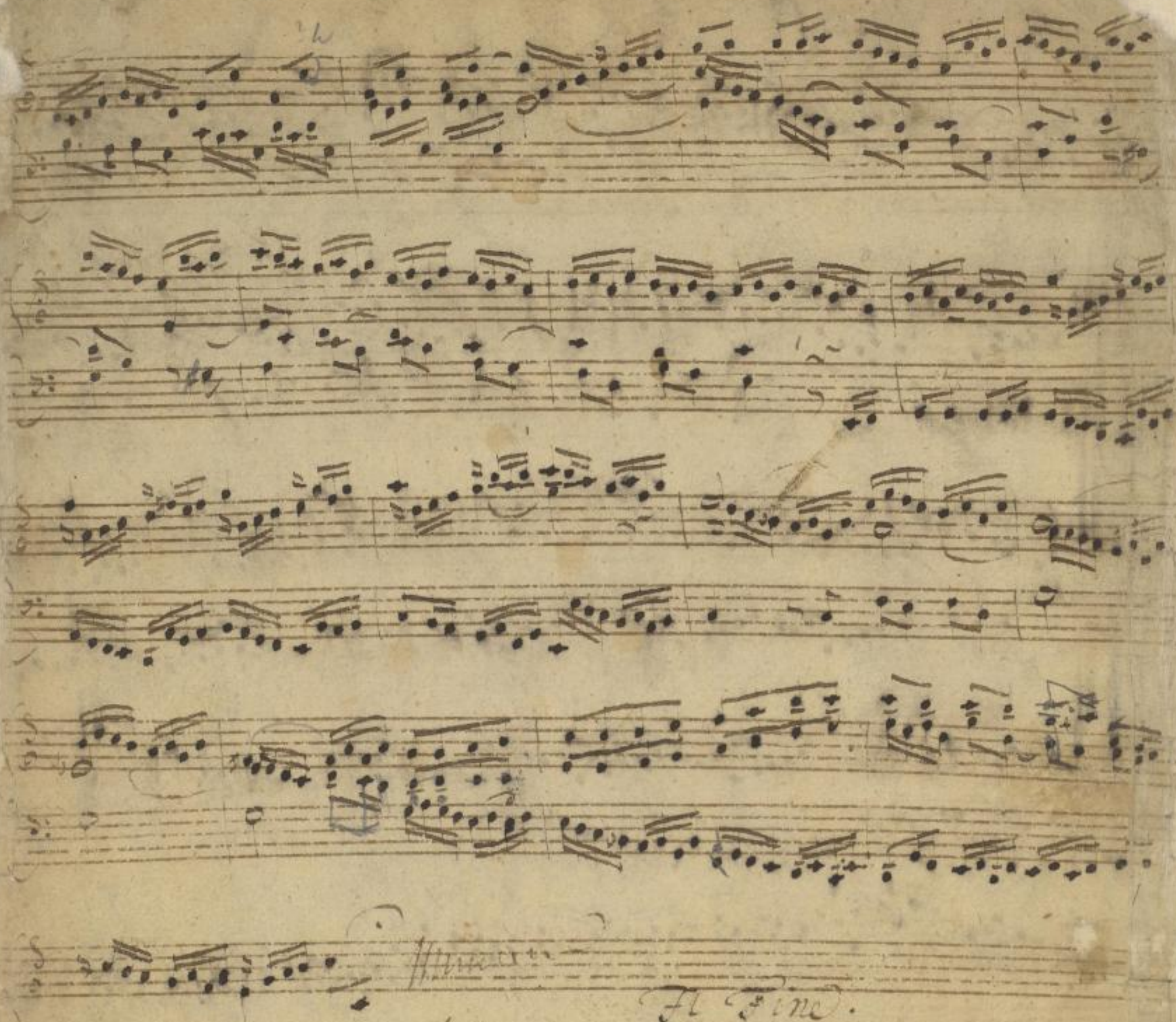












Allegro

Allegro

Al Fine.











13  
J. S. Bach

3 Chorvorspiele.

- 1, Freys in C Dur } unbetont  
2, Fantasie in g moll }  
3, 2 Pötte aus Sonate No II C Dur.  
Bearbeitung mit dem Hortus Musicus  
von Reincken.

Leipzig 30 September  
1886

Herrn Dr. Rust  
Cantor zu St. Thomae.



















