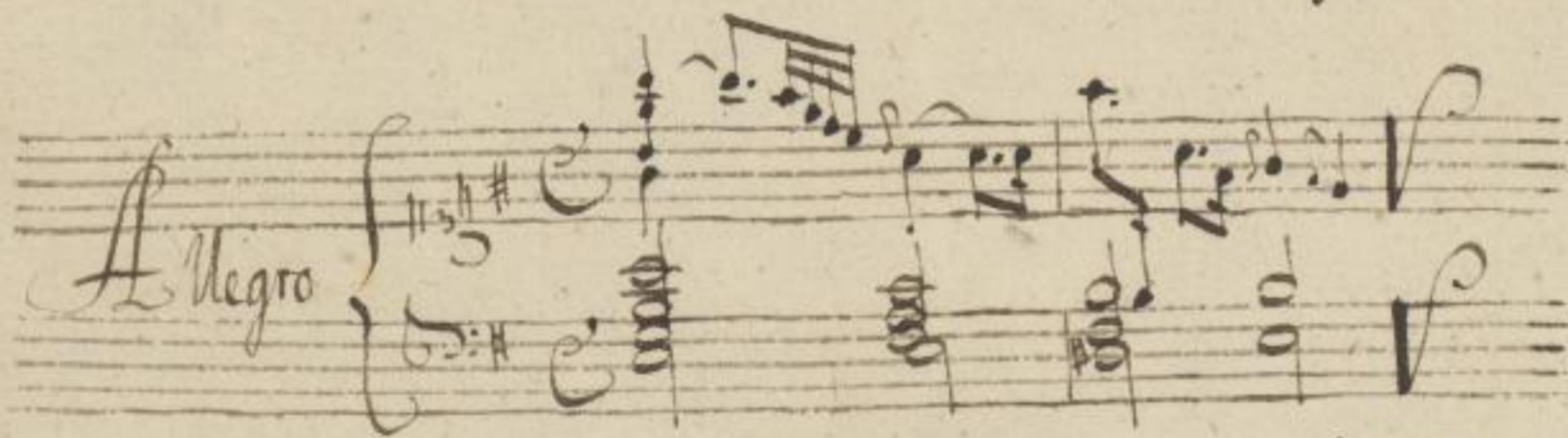


# Sonate ex Ob.

a

## Clavicembalo. Solo.

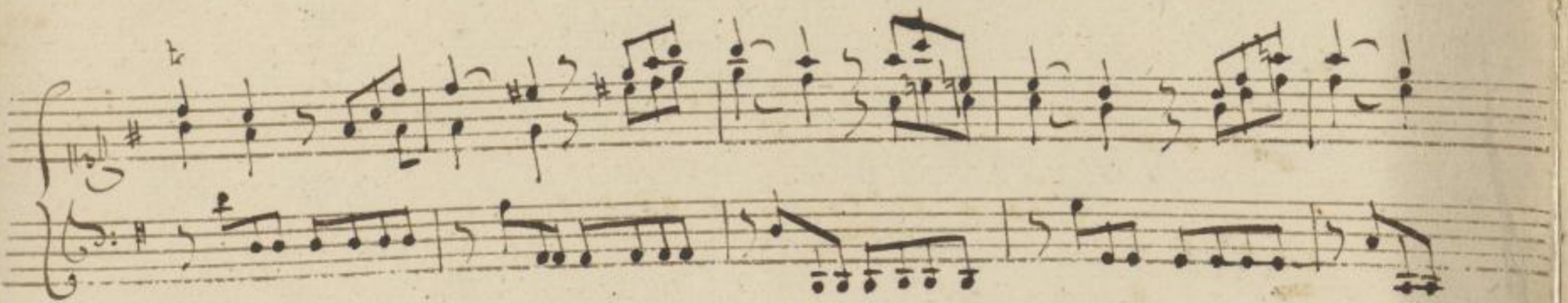

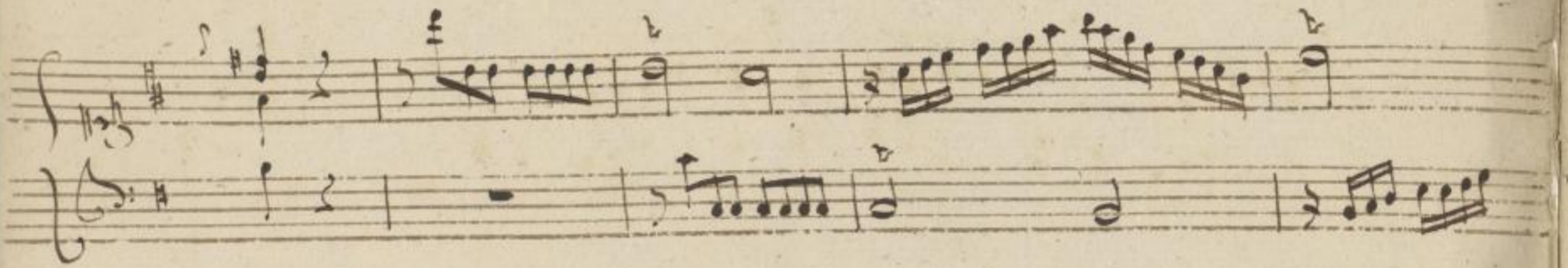
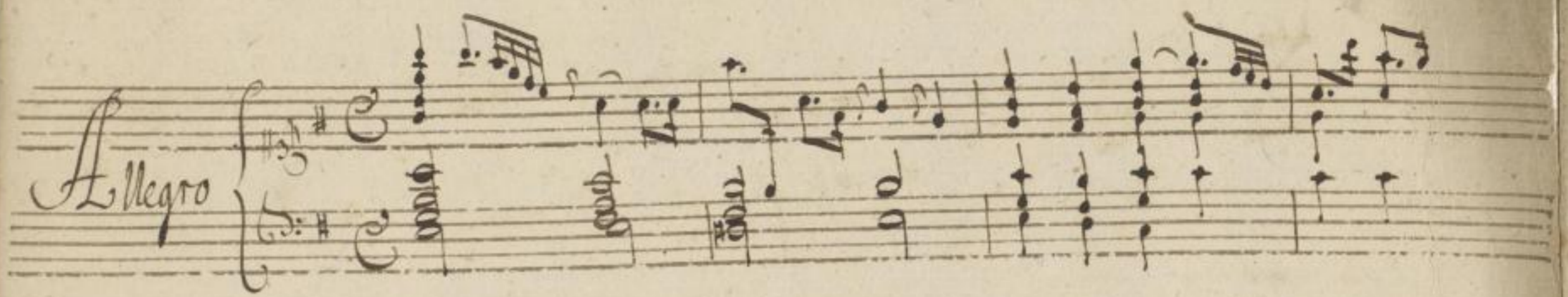
Del Sigr: Carl Ph. E. Bach





Cembalo Solo.

*Allegro*





*Segue La Seconda parte.*



This image shows a page of handwritten musical notation, likely a manuscript for a keyboard instrument. The page is numbered '4' in the top right corner. It contains six systems of music, each consisting of two staves. The notation is in a historical style, featuring treble and bass clefs, a key signature of one sharp (F#), and various musical symbols including notes, rests, and dynamic markings such as 'p' and 'pia.'. The paper is aged and shows some staining and wear.



Handwritten musical score for a multi-measure rest piece. The score consists of 12 systems of two staves each. The music is written in treble and bass clefs with a key signature of one sharp (F#). The notation includes various rhythmic values, accidentals, and dynamic markings such as "for.", "pia.", and "t". The piece concludes with a double bar line and a fermata over the final notes.

si Volti.



*Adagio*

*piano*  
*forte*

*piano*

*piano*  
*for.*  
*piu*

*forte*  
*piu*  
*for.*  
*piano*

*piano*  
*for.*



Handwritten musical notation on a grand staff. The key signature has three sharps (F#, C#, G#). The music features a complex texture with many sixteenth and thirty-second notes. The word "piano" is written above the staff on the right side.

Handwritten musical notation on a grand staff. The key signature has three sharps. The music continues with intricate patterns. The word "for." is written below the staff on the left side.

Handwritten musical notation on a grand staff. The key signature has three sharps. The music features a mix of rhythmic values. The word "piano" is written below the staff in the middle.

Handwritten musical notation on a grand staff. The key signature has three sharps. The notation is sparse, with a few notes and rests. The word "piano" is written below the staff.

si volta.



*Vivace*





Segue La Seconda parte.



This image shows a page of handwritten musical notation, likely a manuscript by Johann Sebastian Bach. The page is numbered '10' in the top right corner. It contains eight systems of music, each consisting of two staves. The notation is in a historical style, featuring treble and bass clefs, a key signature of one sharp (F#), and various rhythmic values including eighth and sixteenth notes. Some notes are circled in ink, possibly indicating specific points of interest or corrections. The paper is aged and shows some wear and tear, particularly at the edges.



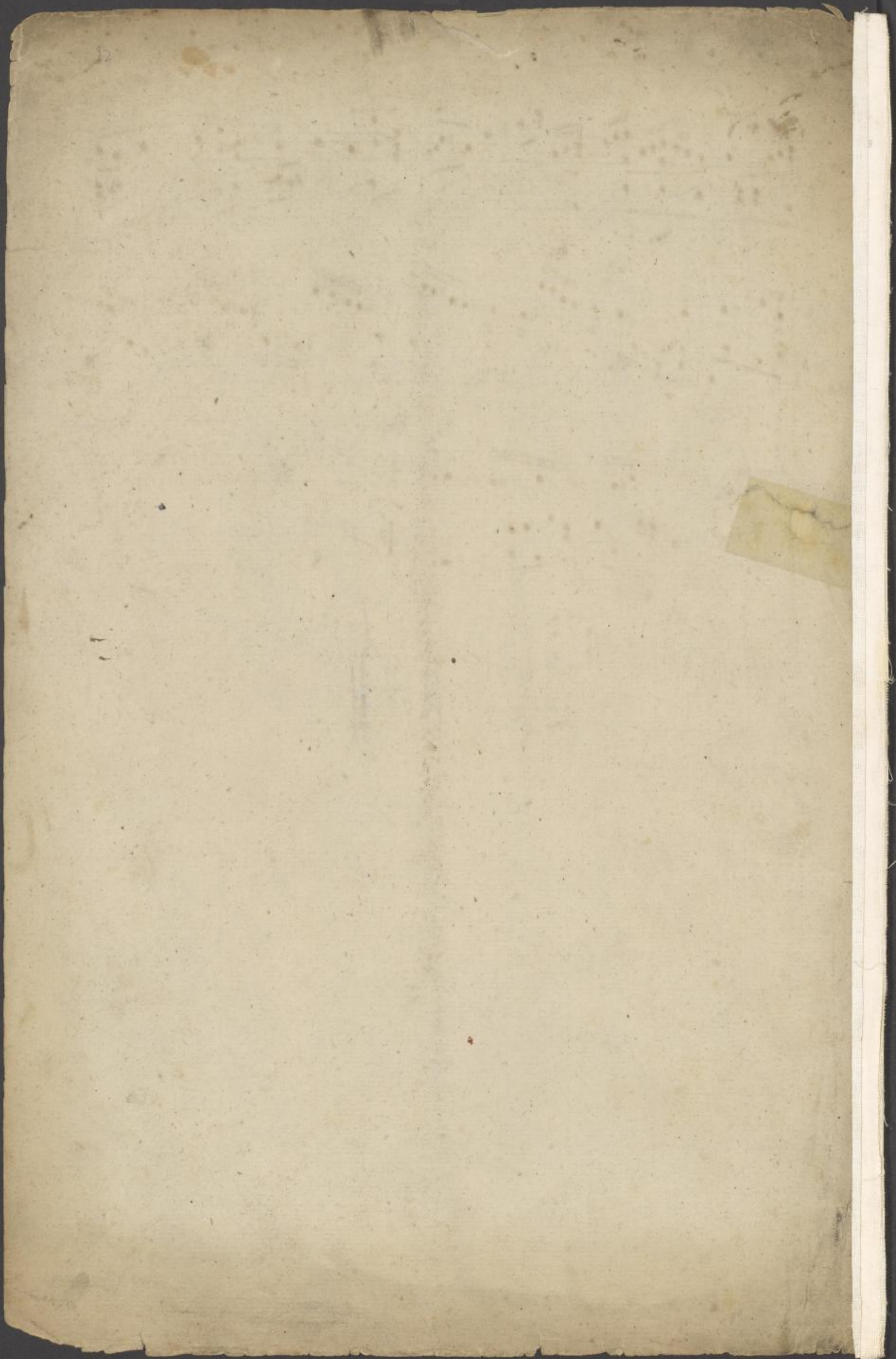
Handwritten musical notation on a five-line staff. The top staff uses a treble clef and the bottom staff uses a bass clef. The key signature has one sharp (F#) and the time signature is 3/4. The notation includes various note values, rests, and slurs.

Handwritten musical notation on a five-line staff, continuing the piece. It features treble and bass clefs, a key signature of one sharp, and a 3/4 time signature.

Handwritten musical notation on a five-line staff, showing a section with treble and bass clefs, a key signature of one sharp, and a 3/4 time signature. The section ends with a double bar line.

Handwritten musical notation on a five-line staff, showing a section with treble and bass clefs, a key signature of one sharp, and a 3/4 time signature. The section ends with a double bar line.







Bach, Stück, Orgel, Gravur

No. 11 Sonate ex Eb a Clavicembalo Solo  
des Sgr. Carl Ph. E. Bach.

[Kl. 2. H.] [folgt Klavier. Verz.]

[Wot quere III, Nr. 49 - 3]

[Vulgar copie ca 1775]

S. 1-12



Go. V. 342



