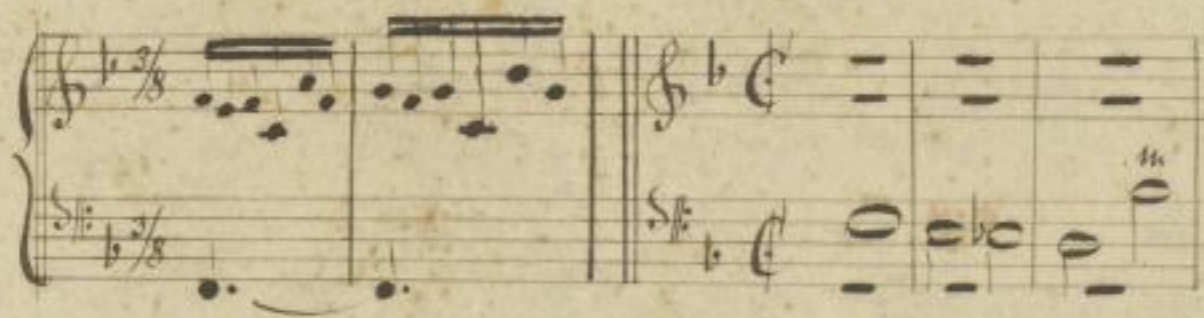


F-Dur.

18

142

Joh. Seb. Bach.  
Toccata et Fuga.





*[Faint, illegible handwritten text, likely musical notation or a list, covering the majority of the page.]*

# Toccata et Fuga.

*♩ = 76* *Alpw.* *trium!*

*Manuale*

*Pedale*

*Thema.* *trium*

Thema

Handwritten musical notation for the first system. It consists of a treble clef staff with a complex melodic line, a bass clef staff with a similar melodic line, and a basso continuo line below. The notation includes various note values, rests, and slurs.

Handwritten musical notation for the second system. It continues the melodic development from the first system. A 'Solo' marking is present in the basso continuo line. The notation includes various note values, rests, and slurs.

Handwritten musical notation for the third system. It shows a continuation of the melodic lines. There are some blue ink corrections or markings in the basso continuo line.

Handwritten musical notation for the fourth system. It concludes the page with a red circle marking a specific measure. The notation includes various note values, rests, and slurs.

Handwritten musical notation for the first system, featuring treble and bass staves with complex melodic lines and a basso continuo line below. The word "trium" is written above the treble staff.

Handwritten musical notation for the second system, continuing the complex melodic and harmonic structure from the first system.

Handwritten musical notation for the third system, with the word "trium" appearing twice, once above and once below the treble staff.

Handwritten musical notation for the fourth system, concluding the page with complex melodic and harmonic patterns.

Handwritten musical score for the first system, featuring a grand staff with treble and bass clefs. The notation includes complex rhythmic patterns and a handwritten 'x' above the first measure. A handwritten 'HB' is visible in the middle of the system.

Handwritten musical score for the second system, continuing the piece with similar complex rhythmic and melodic lines.

Handwritten musical score for the third system, showing further development of the musical themes.

Handwritten musical score for the fourth system, concluding the page with intricate musical notation.

Handwritten musical score for a four-part setting, likely a chorale or cantata. The score is written on four systems of staves, each system containing two staves (treble and bass clef). The notation is dense with notes, rests, and dynamic markings. The paper is aged and shows some staining.

Key features of the score include:

- System 1:** Features a complex texture with many beamed notes and rests. A large slur spans across the first two staves.
- System 2:** Continues the complex texture with various rhythmic values and phrasing.
- System 3:** Includes the dynamic marking *f* (forte) above the first staff. The texture remains dense.
- System 4:** Shows a change in texture, with more sustained notes and some rests. The dynamic marking *ff* (fortissimo) is visible.



gusto

basso

116

117

This page of a handwritten musical manuscript, numbered 10 in the top right corner, contains a multi-measure rest. The score is written on four systems of staves. The first system begins with a large '7' and a red cross symbol, indicating a seven-measure rest. The left hand (lower staves) is highly active, playing complex polyphonic textures with many beamed notes and slurs. The right hand (upper staves) features a more melodic line with some slurs and dynamic markings. The notation is dense and characteristic of 18th-century manuscript style. There are some blue ink annotations, including a diagonal line in the first system and a vertical line in the second system. The paper shows signs of age, with some staining and wear.

This image shows a page of handwritten musical notation, likely a three-part setting of the Lord's Prayer. The page is divided into three systems, each consisting of three staves. The top system uses a treble clef for the upper voice and a bass clef for the lower voice. The middle system uses a treble clef for the upper voice and a bass clef for the lower voice. The bottom system uses a treble clef for the upper voice and a bass clef for the lower voice. The notation includes various musical symbols such as notes, rests, and ornaments, and is written in a clear, elegant hand.

Handwritten musical score for a three-part setting of "Christe eleison" by Johann Sebastian Bach. The score is written on four systems of three staves each. The first system includes a soprano line, an alto line, and a bass line. The second system includes a soprano line, an alto line, and a bass line. The third system includes a soprano line, an alto line, and a bass line. The fourth system includes a soprano line, an alto line, and a bass line. The music is in G major and 3/4 time. The score is handwritten in black ink on aged paper. There are some blue ink annotations on the score, including a bracket under the second system and some markings on the notes. The page number "12" is written in the top right corner.

Fuga.  $\text{♩} = 69.$

The first system of the fugue consists of two staves. The upper staff contains a melodic line with various note values, including quarter and eighth notes, and rests. The lower staff contains a bass line with similar note values and rests. The system is numbered 1 through 15 at the bottom.

The second system of the fugue consists of two staves. The upper staff continues the melodic line with more complex rhythmic patterns. The lower staff continues the bass line. The system is numbered 16 through 27 at the bottom.

The third system of the fugue consists of two staves. The upper staff features a more active melodic line with many sixteenth notes. The lower staff continues the bass line. The system is numbered 28 through 39 at the bottom.

The fourth system of the fugue consists of two staves. The upper staff continues the complex melodic line. The lower staff continues the bass line. The system is numbered 40 through 51 at the bottom.

Handwritten musical score for a four-part setting, likely a chorale. It consists of four systems of staves. Each system has a vocal line (Soprano, Alto, Tenor, Bass) and a keyboard accompaniment (Right and Left Hand). The notation includes various note values, rests, and ornaments. The paper shows signs of age and wear.

Handwritten musical score system 1, consisting of two staves. The upper staff contains a complex melodic line with many sixteenth and thirty-second notes, while the lower staff contains a simple bass line with vertical strokes.

Handwritten musical score system 2, consisting of two staves. The upper staff continues the complex melodic line, and the lower staff continues the simple bass line.

Handwritten musical score system 3, consisting of two staves. The upper staff continues the complex melodic line, and the lower staff continues the simple bass line.

Handwritten musical score system 4, consisting of two staves. The upper staff continues the complex melodic line, and the lower staff continues the simple bass line.

Handwritten musical notation for the first system, featuring a treble and bass clef with various notes and rests.

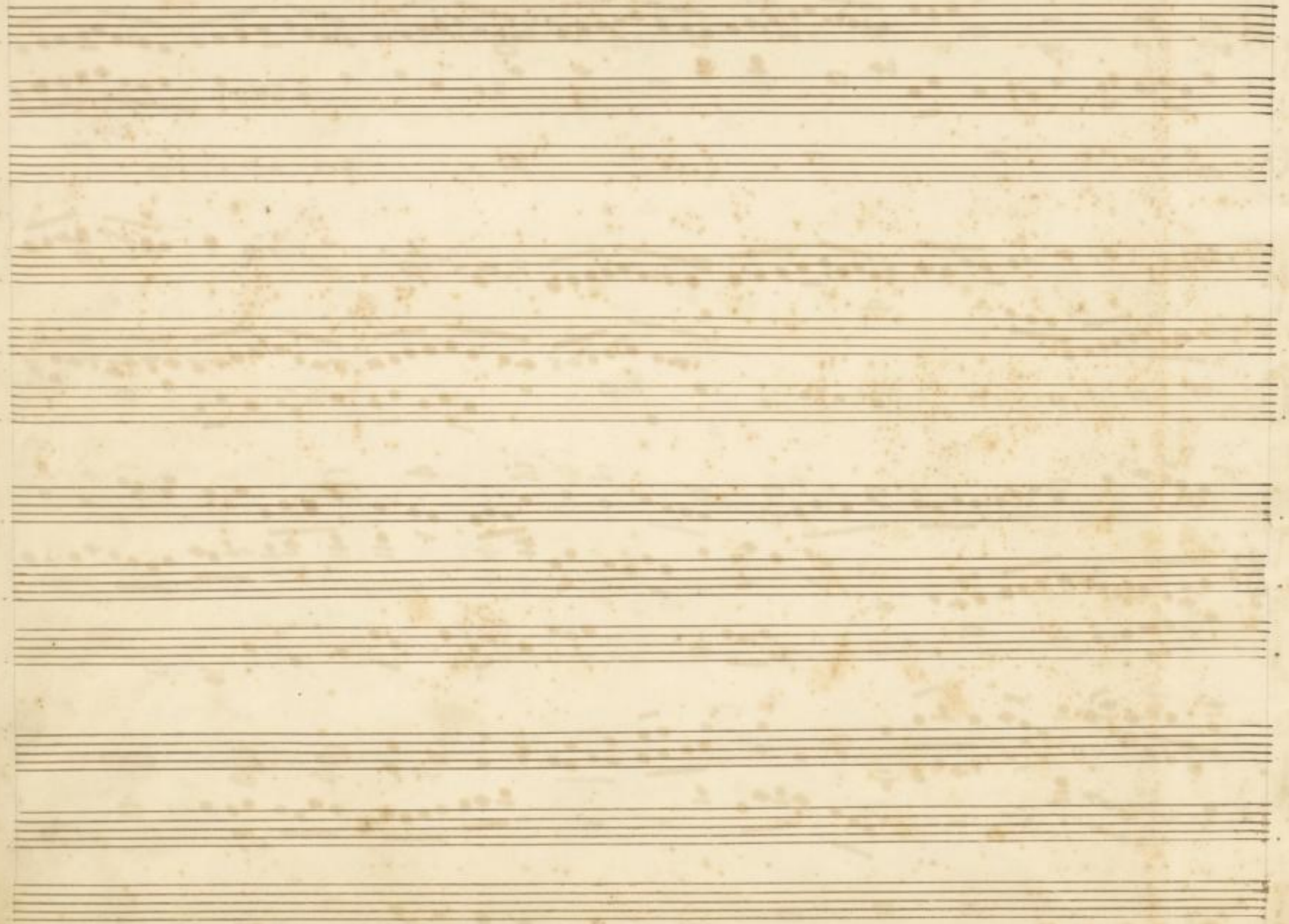
Handwritten musical notation for the second system, featuring a treble and bass clef with various notes and rests.

Handwritten musical notation for the third system, featuring a treble and bass clef with various notes and rests.

Handwritten musical notation for the fourth system, featuring a treble and bass clef with various notes and rests.











Bach, Johann Sebastian

Joh. Seb. Bach Toccata et Fuga [Nr. 5 F. 402]

[folgt Thema]

[Orgel m. Pedal]

Kopie ca 1840

8 Bl.



G. 9. 18

