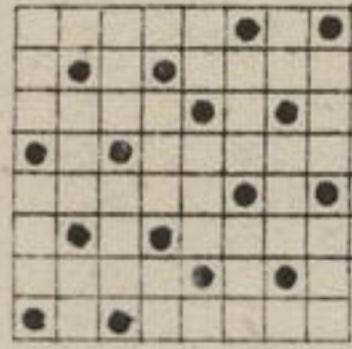
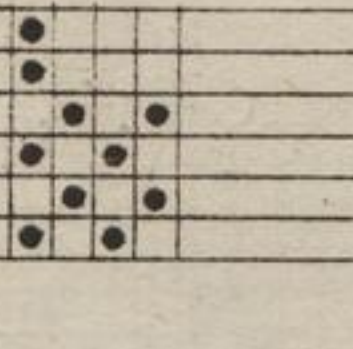


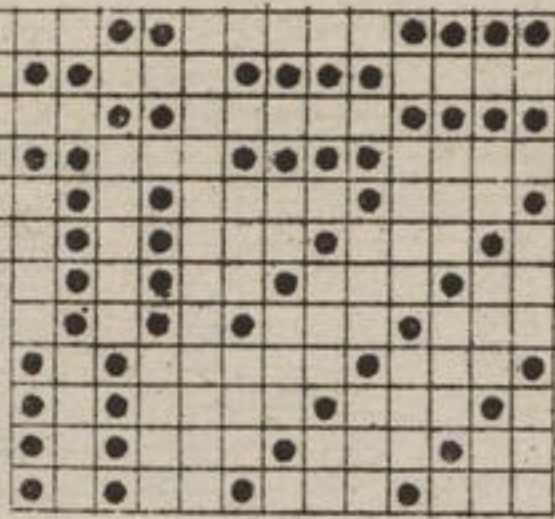
1.
Die einseitige
Carolle.
Fig. 22.



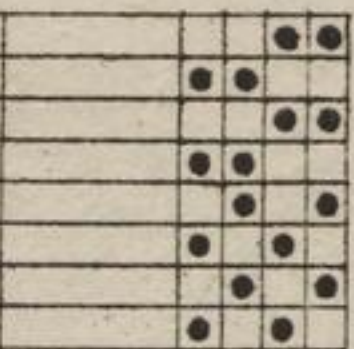
2.
Ditto.
Fig. 23.



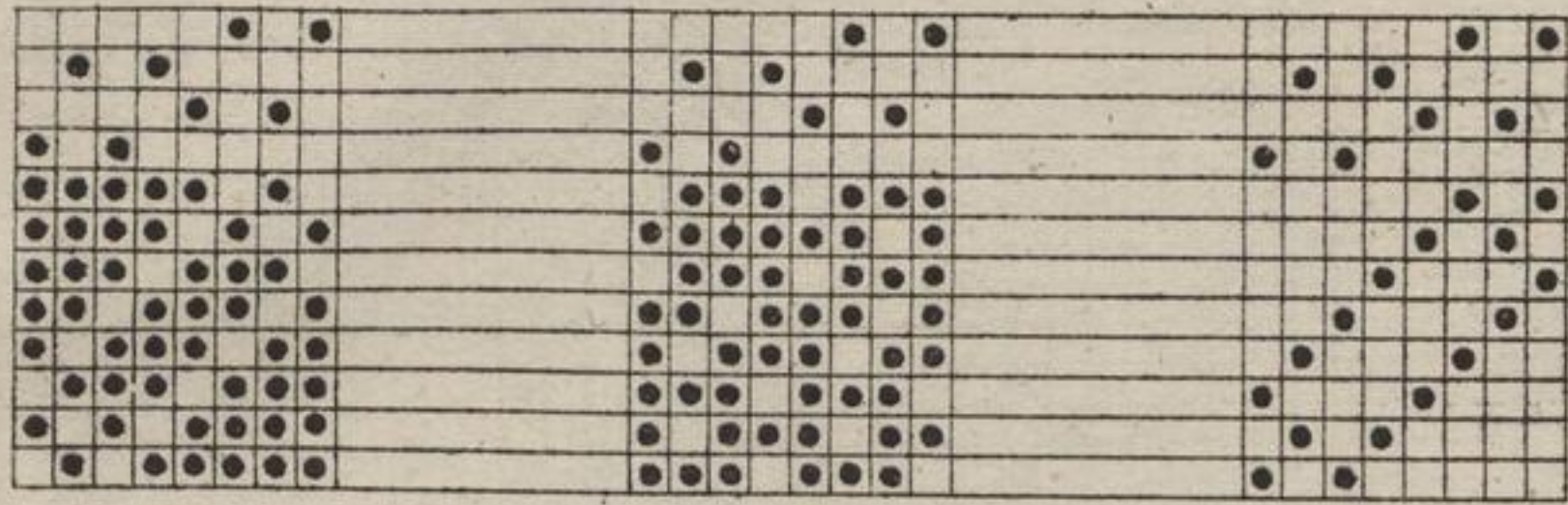
Die zweiseitige
Carolle.
Fig. 24.



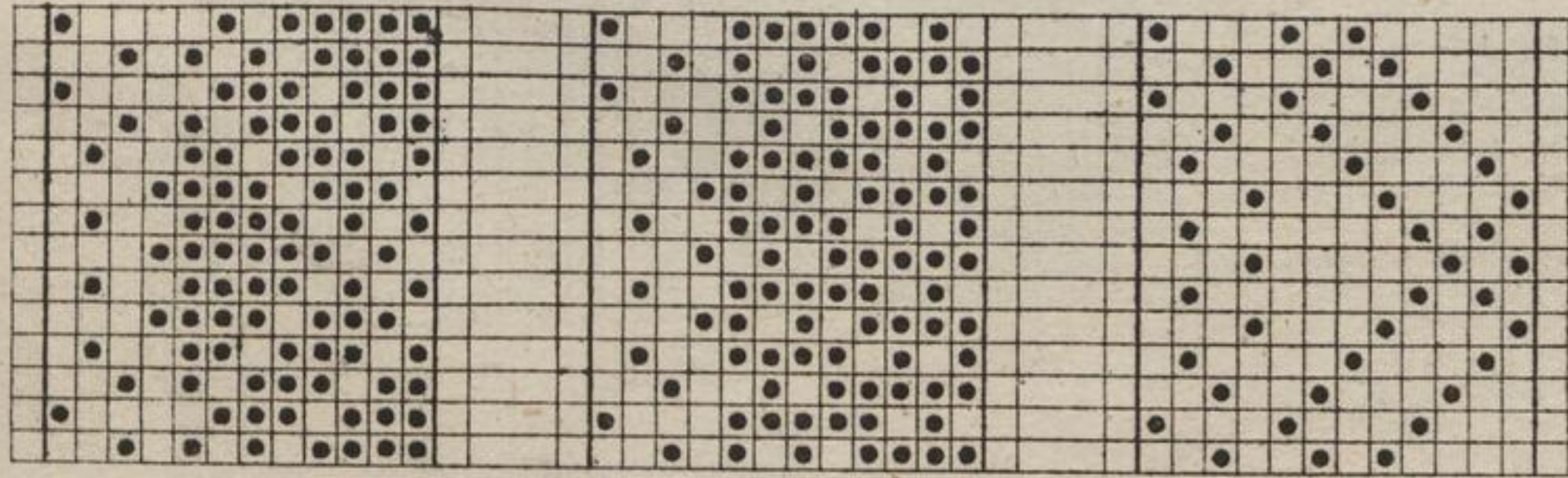
Die zweiseitige
Grenze Carolle.
Fig. 25.



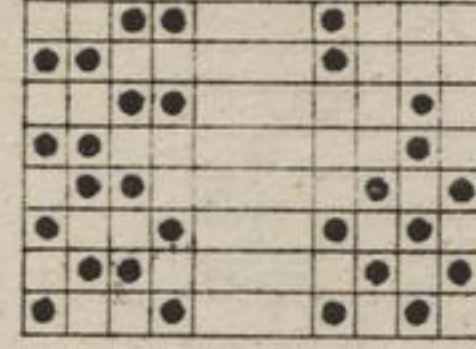
Auf der kleinen Malzener Maßlinie
Die sogenannte Pflanzentüfel mit Parisser Grenze und Carollestreifen
Fig. 26.



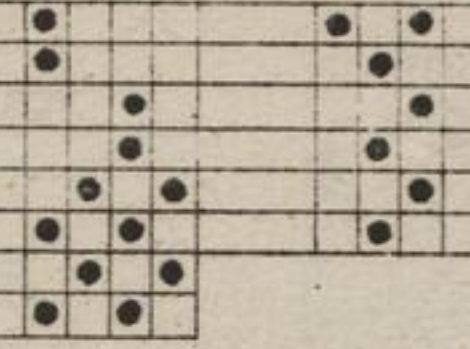
Ditto Pflanzentüfel x x:
Fig. 27.



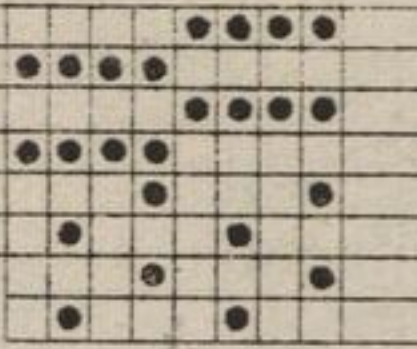
1.
Die zweiseitige
Millepoint
Fig. 28.



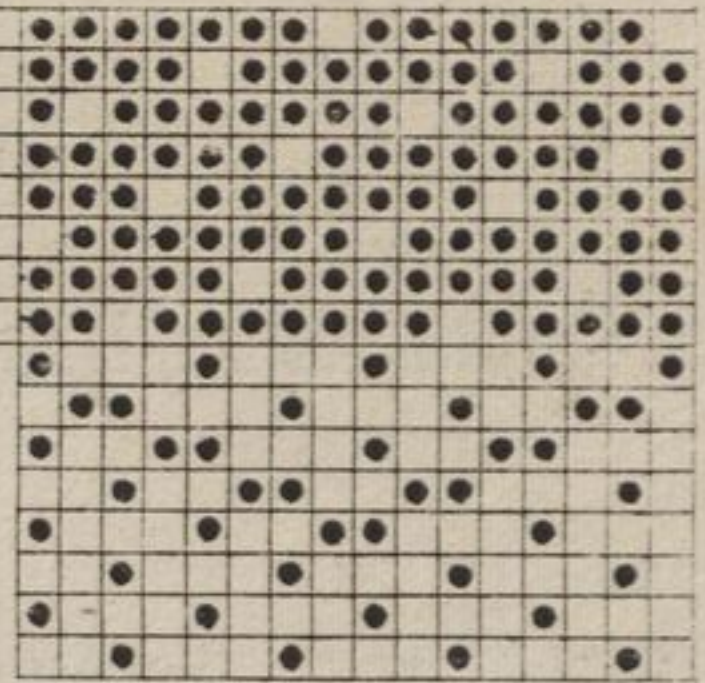
2.
Die einseitige
Ditto.
Fig. 29.



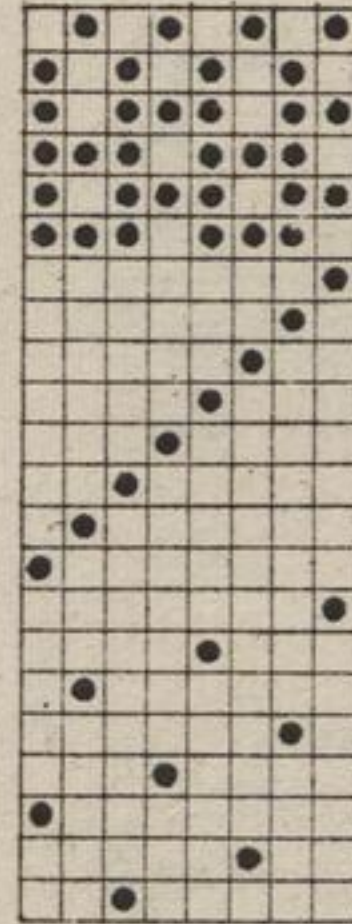
Pflanzentüfel mit Carolle.
Fig. 30.



Pflanzentüfel mit Millepoint.
Fig. 31.



Millepoint
mit Croiset
Ditto mit Kaffee
Fig. 33.



Semlin.
Fig. 34.

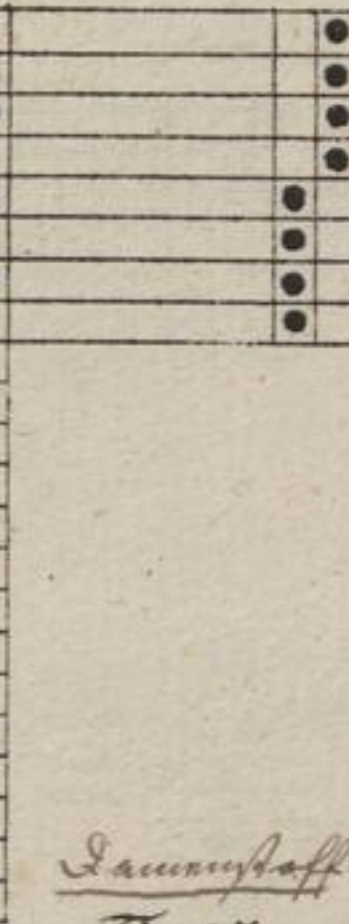


Fig. 35.
Pelour.

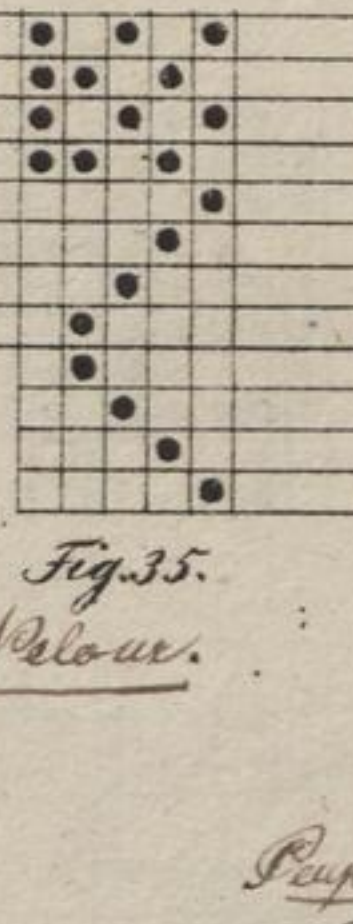
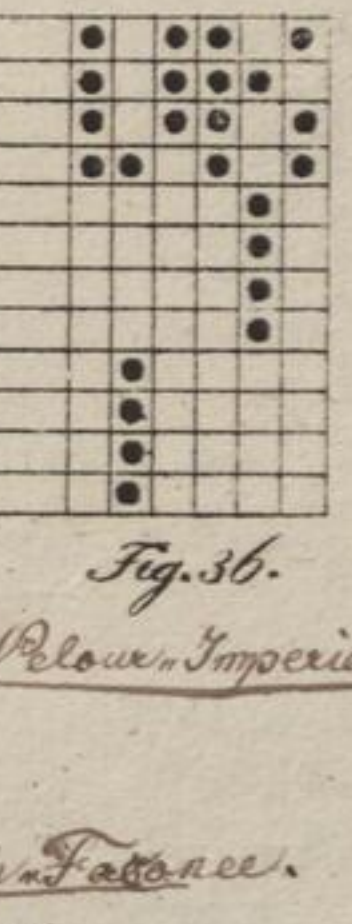
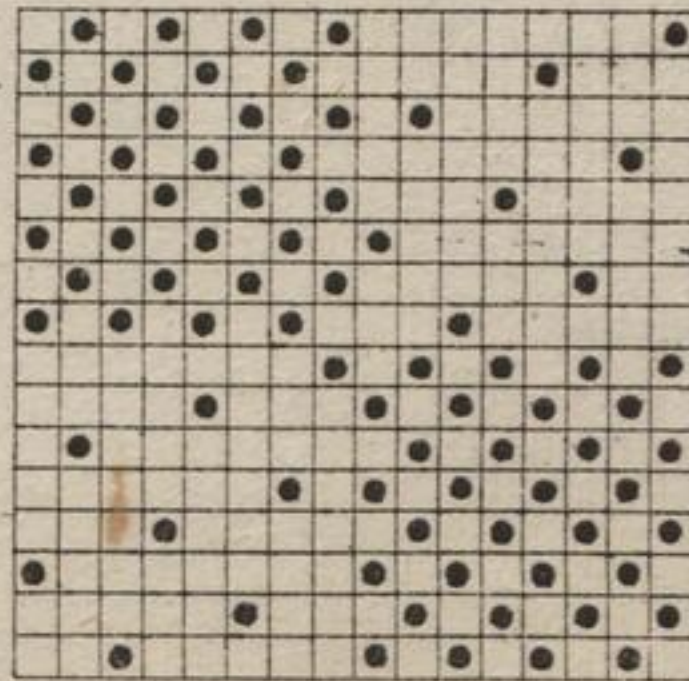


Fig. 36.
Pelour Imperial



Laurinshaff.
Fig. 37.



Paplin & Fatacc.
Fig. 38.

