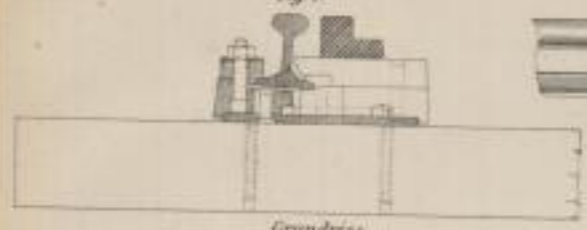
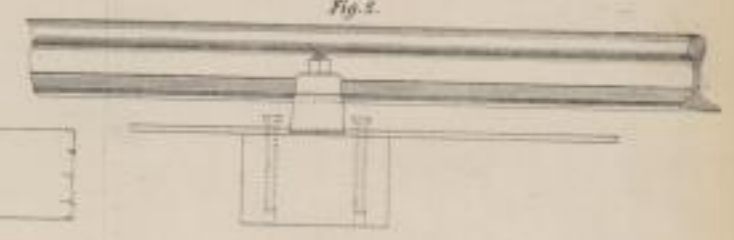


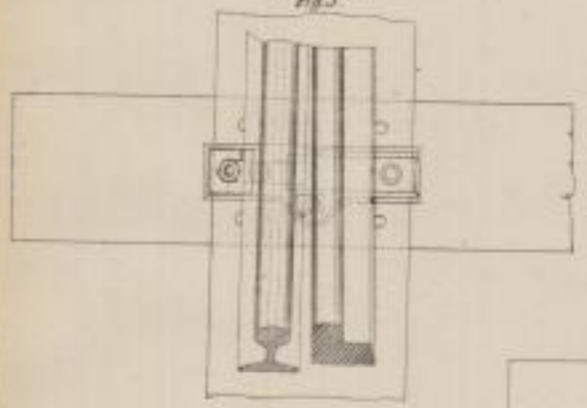
Vorder-Ansicht  
 Fig. 1.



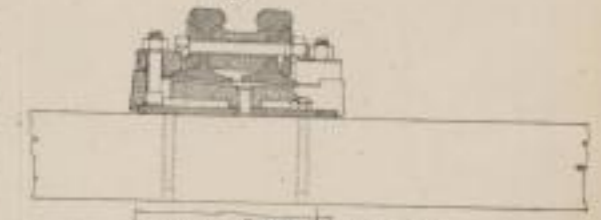
Seiten-Ansicht  
 Fig. 2.



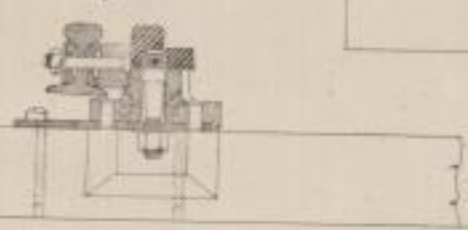
Grundriss  
 Fig. 3.



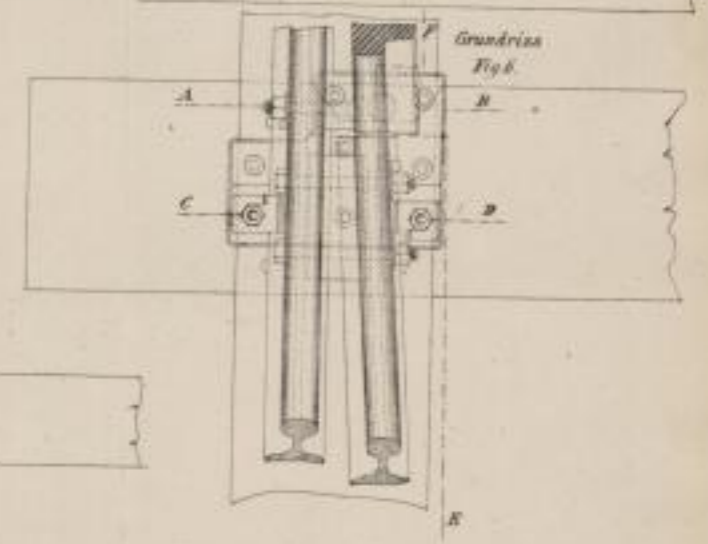
Schnitt nach CD  
 Fig. 4.



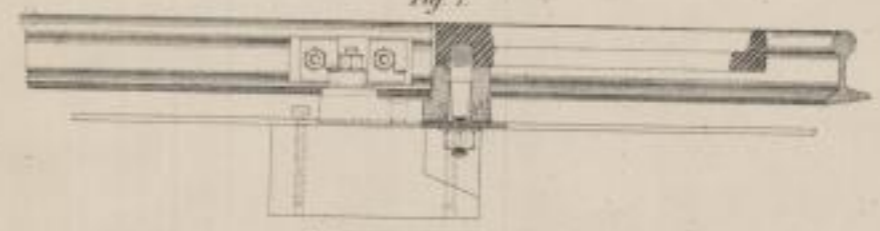
Schnitt nach AB  
 Fig. 5.



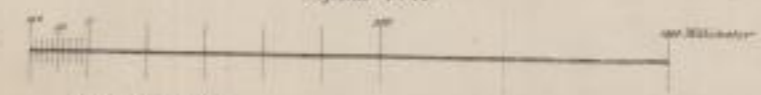
Grundriss  
 Fig. 6.



Seiten-Ansicht und Schnitt nach EE  
 Fig. 7.



Mafstab 1 : 10



Druck der Bahnzeitung  
 Deutscher Eisen-N° 17.