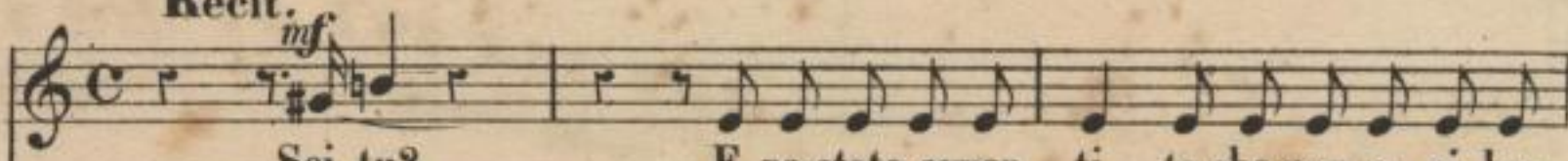


DUETTO E CORO FINALE.

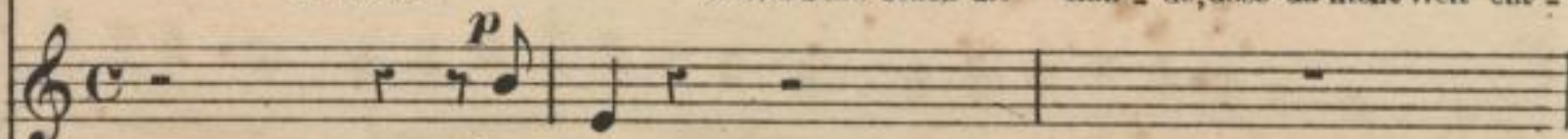
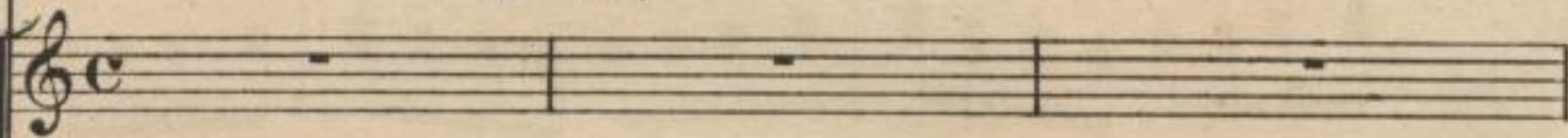
N° 27.

CARMEN.

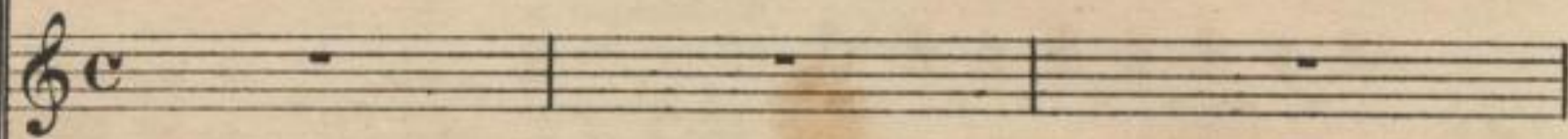
Recit.

Sei tu?
Du bist's?E-ro stata avver - ti - ta che non e - ri lon -
es ward mir schon die Kun - de, dass du nicht weit ent -

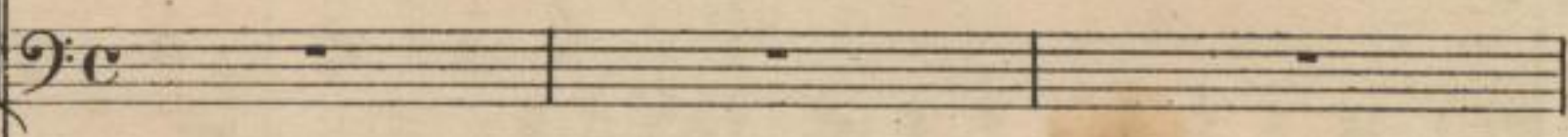
DON JOSÈ.

Son io.
Ich bin's.1^{mi} e 2^{di} SOPRANI.

TENORI.

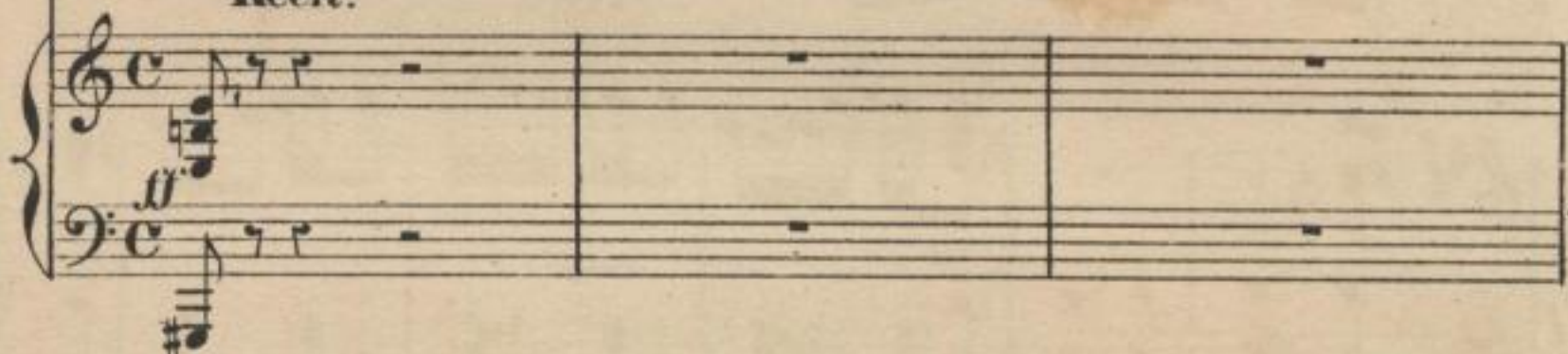


BASSI.

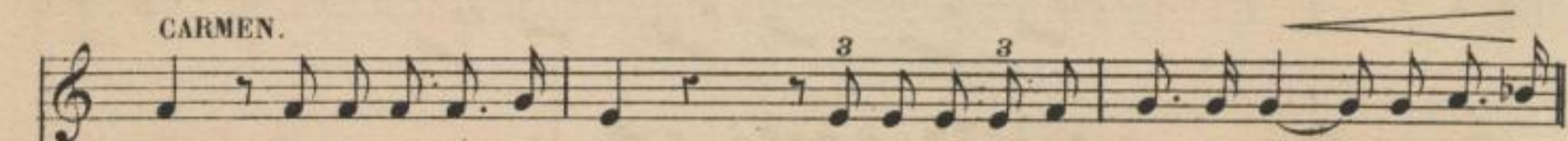
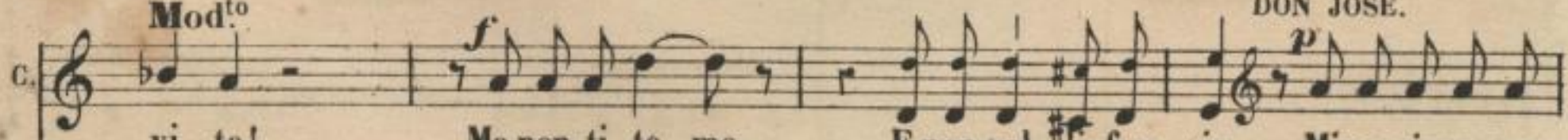


PIANO.

Recit.



CARMEN.

- tan, che do-ve-vi ve - nir.
- fernt, dass du mir stell-test nach;Poi mi fu detto an - cor, ah! te - mi per la
Selbst Ge-fahr für mein Le - ben bräch - te die - seMod^{to}vi - ta!
Stunde,
Mod^{to} (♩ = 96)
Ma non ti te - mo,
Doch ich bin furchtlos,E non vol - li fug - gir Minacciare non
fei-ge Flucht wä-re Schmach! Ich will dir ja nicht

DON JOSÈ.

