

21

G. Bizet



Carmen



Schlagzeug

4 Schlagzeug

1

eingestuft für 2 Mann Besetzung

Carmen

G. Bizet

(Cassa, Becken, Triangel, Castagnetten)

Nr. 1

All^o *ff*

Cassa m.

trummern

trummern
piu ff

Ancl^{to} mod^{to}
22

•Sünovae Nr. 3 - 10 zedlig

tarot
5 Min

2

Act I

No 2 (tacet)

Nº 3

All. to

4

16 28 Fl. *ff* 1 2 3 4 *ff*

Tromp. n.º 2. B. Orchester

pp

31 *pp*

meno p

mf Beck Solo 2 3 4 1 2 3 4

trumm *fff* *fff* *Récit.* 9 16 *pp*

pp

28 (bis Nº 11 = 32 Min.)
(bis Nº 5 = 5 Min.)

Nº 3 bis (tacet)

Nº 4^H (tacet)

Nº 5
4

Allº quasi Andº

mit Tamb

1 2 3 4 5

15 16 17 18 19

Tamb

17 5 1 2 3 4 5 6 7 7

Tamb

3 23 Collin. Nº 6, 6 bis, 7, 8, 9, 10 (tacet)

Nº 11 47 15 9 8

Allº mod. / Allº vivace

lilli Phe The

1 2 3 4 5 6 7 8

lassa m.

3 1 1 1 1 1

*Sünova Nr. 3 - 10 zellig

5 ff I Akt Ende

Entr'acte (tacet)
kl. Trommel

N^o 12
A

II. Akt

3/4 55 | Tambur 12 | atempo 22 23 24 25 26 27

28 4 tm pp

tm pp *Tempo animato*

tr 1 2 3 4

Plus vite

2 3 4 5 6 7

(* weglassen) Presto Becken Solo

2 3 p 1 2 3 1 1 1 2 3

N^o 12 bis, + 13 (tacet.)

kl.

bis N^o 17 = 14 Min.
bis N^o 18 = 28 "

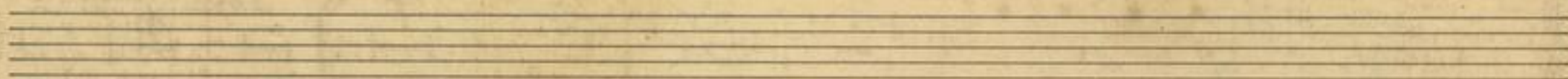
tr *tr* *tr* *tr* *tr*

mf

tr *tr* *tr* *tr*

le reste (tacet)

10 Min.



N^o 18

tacet

20 *tr*

Mein Offizier

Allo mod

38 *tr* 39 40 41 3

mf

3 4 5 6 7 8 *tr* 9 10 11 12 13 14

Bek. + *tremolo*

Cassa

ff *lassam.*

23 24 25 26 27 28 29 30 31 32 33 34 35 36 37

1 2 3 4 5 6 7 8 9 10 11 12 13 14 15 16 17 18 19 20 21 22

tr *tr*

4 5 6 7 8 9 10 11 12 13 14 15 16 17 18 19 20 21 22 23 24 25 26 27 28 29 30 31 32 33 34 35 36 37 38 39 40 41 42 43 44 45 46 47 48 49 50 51 52 53 54 55 56 57 58 59 60 61 62 63 64 65 66 67 68 69 70 71 72 73 74 75 76 77 78 79 80 81 82 83 84 85 86 87 88 89 90 91 92 93 94 95 96 97 98 99 100

4 *ff*

Pause

III. Akt

Entr' Acte
N° 19, 20 (tacet)

15 Min.

N° 21

All^{to} 24

Tromp.

pp Beck. Solo

leaste tacet

In meine Empfindung kommt mir 25^c 17 Min bis Aktschluss
25a, 25b, 25c, 25d, 25e 3/17 59

IV. Akt

Allu rivo

Tamb.

lassa m

40

36

rit.

35^a

The

pp

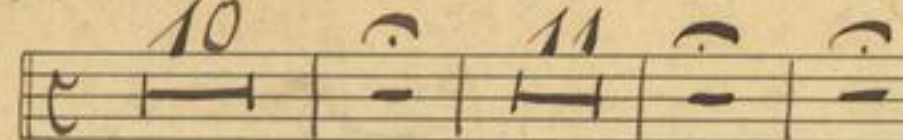
merz.

folgt 25B

~~N° 25 A (gestrichen)~~ bleibt weg folgt 25c

Andantino

10

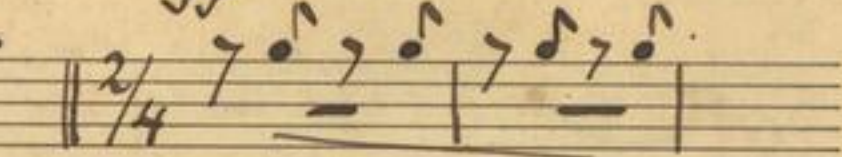


Moderato

37

Tromp. Oke

ff All^o

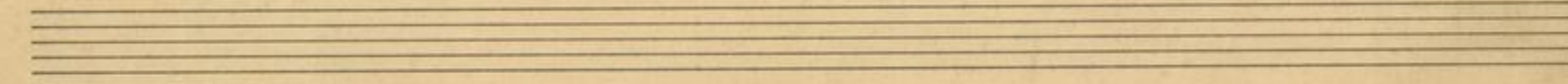
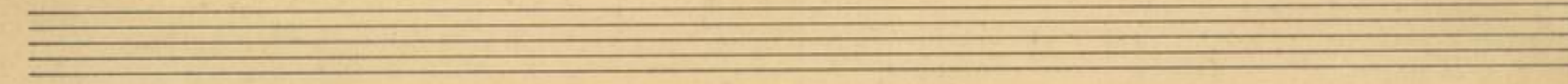
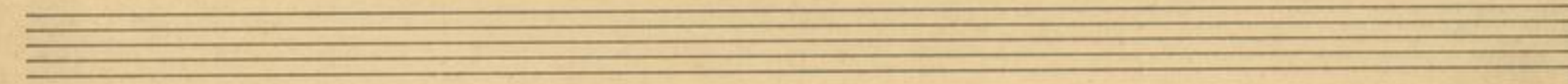
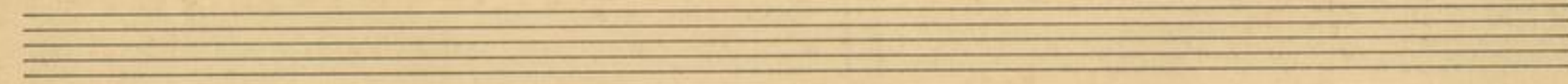
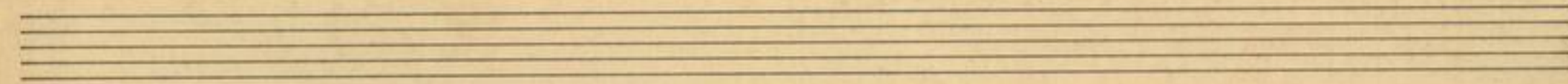
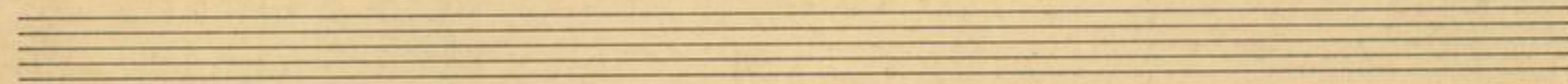
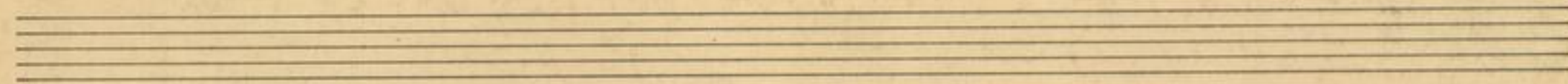
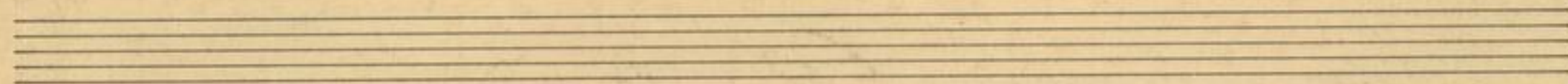
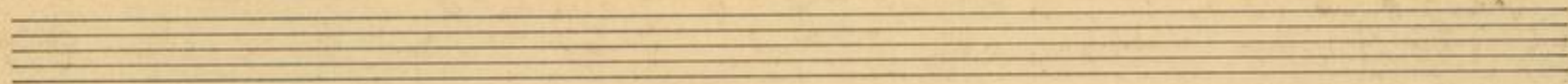
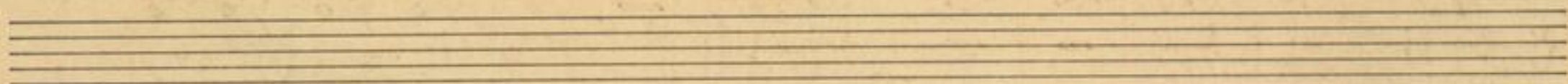


Reinhold Rauge
Oktober 1937.

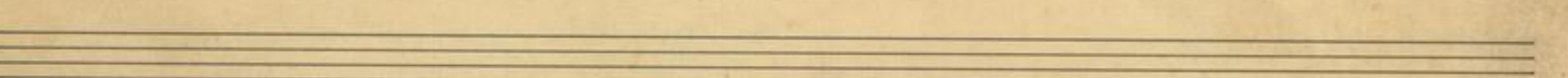
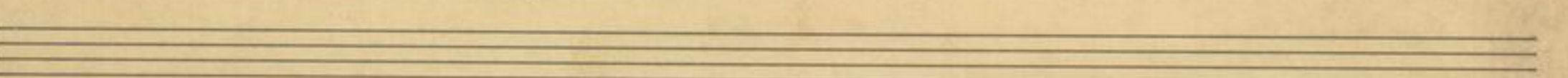
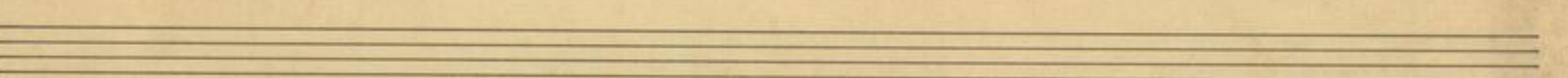
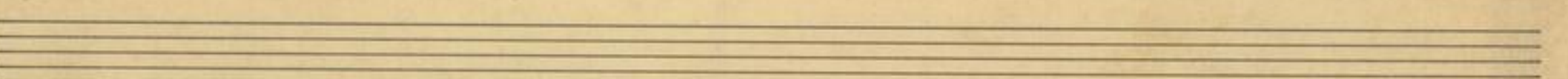
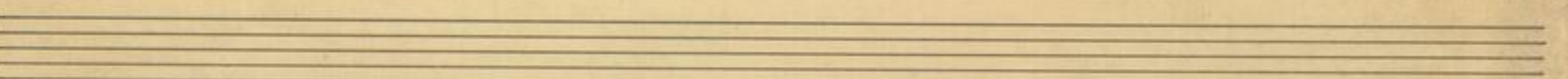
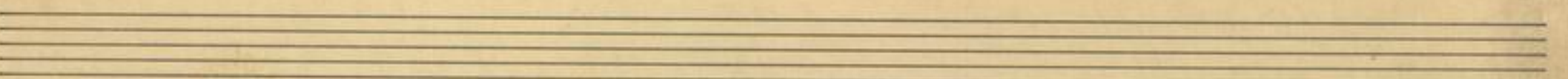
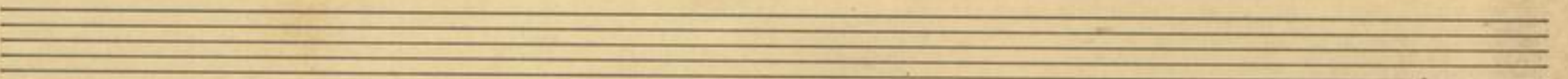
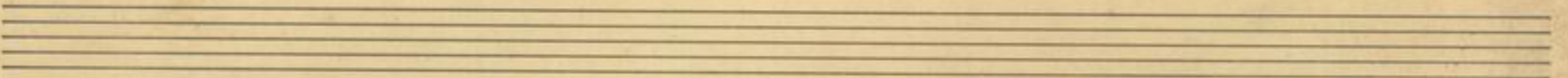
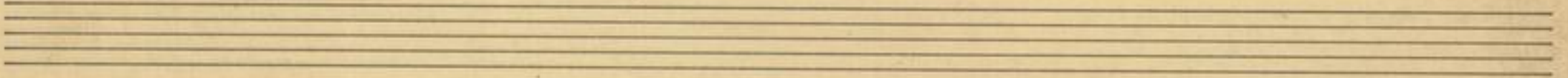
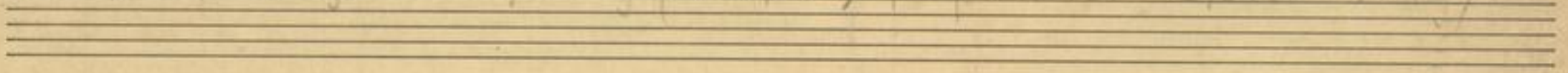
27. November 1937 (Rauge, Norden)

1. Februar 1942	(Neueinstudierung)	Bonnem: Heringer	Hr. Gehm.	Wittberg
15. Jan. 1955	2. 1. Male Komposition	Lange, Gehring, Poralla		
17. Aug 1955				
3. 5. 61	Poralla, Hering, Hr. Kupper	3. 5. 65	Lange, Hering, Hr. Singer	a. G.
15. 3. 66	Poralla, Hering, Behring / Singer a G.			
15. 12. 66	H. K. S. / Kupp			





25.9.52, Lange - Behsting (Wilhelm, Großmutter Geburtstag)





SLUB

Wir führen Wissen.



SÄCHSISCHE
STAATSKAPELLE
DRESDEN



Semperoper
Dresden

