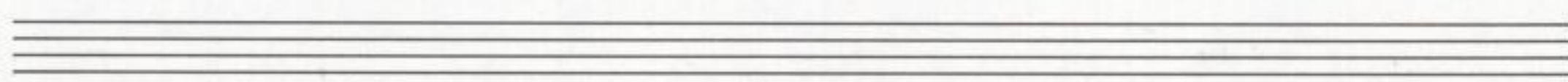
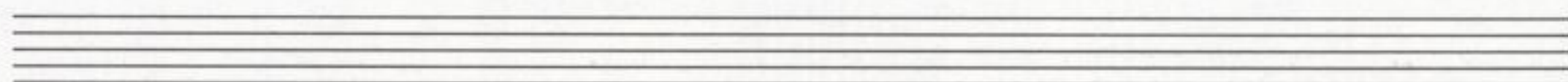
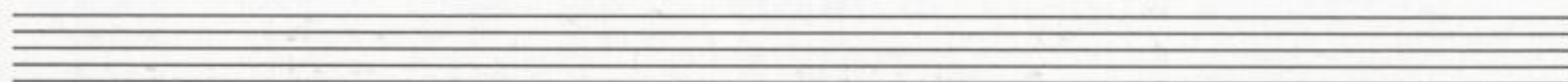
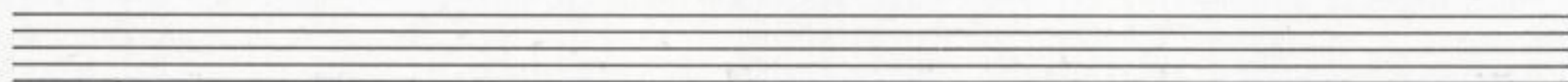
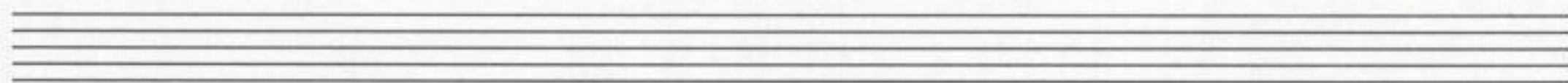
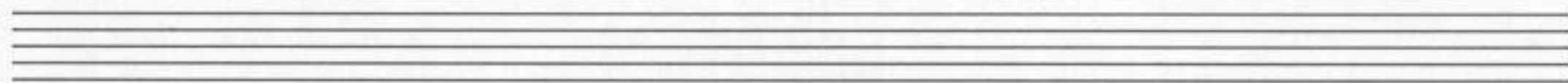
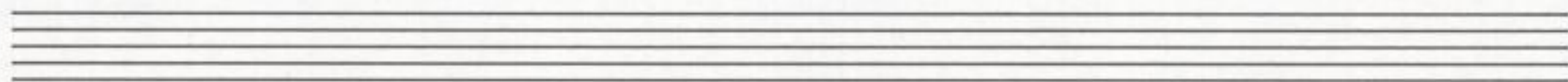
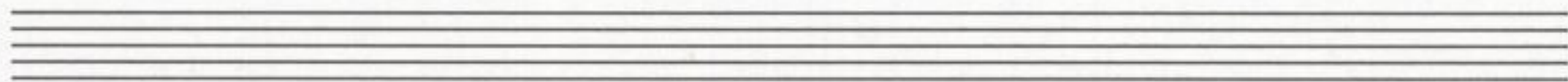
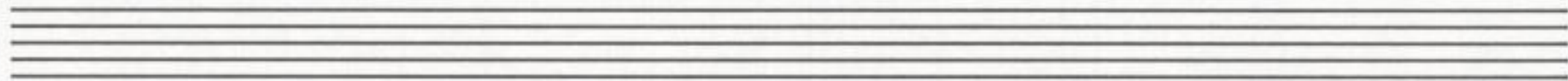
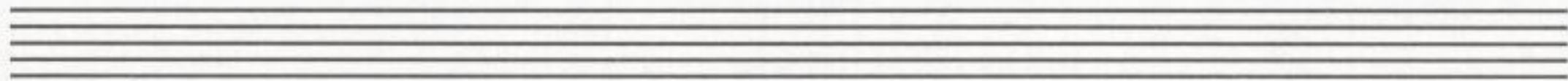


Gonatine

Mus. 15058-S-507





Sonatine

mit Klavier

für Tenorfagott, oder einfaches Fagott

Victor Borge op. 96

Allegro sostenuto

I

Klavier

1

Tenor-fag. cant. *mf* *f espress.*

Fag. cant. *mf* *f espress.*

2

Ten. fag.

Fag.

Ten.

Fag.

Mus. 15058-5-507



9 27 x -

b

2

3

Handwritten musical score for measures 3 and 4. The top staff is in treble clef and the bottom in bass clef. Both start with 'p cant.' and 'mf' dynamics. The music features complex chromatic patterns and slurs.

4

Handwritten musical score for measures 5 and 6. The top staff is in treble clef and the bottom in bass clef. Dynamics include 'p', 'mf', and 'p'.

5

Handwritten musical score for measures 7 and 8. The top staff is in treble clef and the bottom in bass clef. Dynamics include 'mf', 'mf', and 'p'.

6

Handwritten musical score for measures 9 and 10. The top staff is in treble clef and the bottom in bass clef. Dynamics include 'mf', 'p', and 'mp'.

Handwritten musical score for measures 11 and 12. The top staff is in treble clef and the bottom in bass clef. Dynamics include 'mf' and 'mf'.

7

poco ten. *à tempo*

8

mp cant.

9

espress.

II

Allegro tranquillo

subito a tacca

4

10

Handwritten musical notation for measures 10 and 11. The system consists of two staves. The top staff is in treble clef and the bottom in bass clef. Both are in 4/4 time. The music features complex rhythmic patterns with many beamed notes and slurs. Dynamic markings include 'p cant.', 'mp', and 'p'.

Handwritten musical notation for measures 11 and 12. The system consists of two staves. The top staff is in treble clef and the bottom in bass clef. Both are in 4/4 time. The music features complex rhythmic patterns with many beamed notes and slurs. Dynamic markings include 'mf' and 'p'.

Handwritten musical notation for measures 12 and 13. The system consists of two staves. The top staff is in treble clef and the bottom in bass clef. Both are in 4/4 time. The music features complex rhythmic patterns with many beamed notes and slurs. Dynamic markings include 'mf' and 'p'.

Handwritten musical notation for measures 13 and 14. The system consists of two staves. The top staff is in treble clef and the bottom in bass clef. Both are in 4/4 time. The music features complex rhythmic patterns with many beamed notes and slurs. Dynamic markings include 'p'.

Handwritten musical notation for measures 14 and 15. The system consists of two staves. The top staff is in treble clef and the bottom in bass clef. Both are in 4/4 time. The music features complex rhythmic patterns with many beamed notes and slurs. Dynamic markings include 'p cant.', 'mf', and 'p'.

Animato

mf cant.

mf cant.

15

mf cant.

mf cant.

16

mf cant.

mf cant.

17

f espress.

f espress.

subito attacca

mf

mf

6 à tempo I

18

III/18/38 · Ag 448/376/88
10 lines

Handwritten musical score for two vocal parts and piano accompaniment. The top two staves are for vocal parts, both starting with *p cant.* and *mp*. The piano accompaniment is on the bottom two staves, starting with *mf*. The music is in 3/4 time and features complex harmonic structures with many accidentals.

Two empty musical staves, one above and one below a central section marker.

III

Handwritten musical score for two woodwind parts. The top staff is for Tenor Saxophone (*Ten-fag.*) and the bottom staff is for Bassoon (*Fag.*). The tempo is marked *Allegro animato* and the mood is *mp giocoso*. The music is in 3/4 time and features complex harmonic structures with many accidentals.

19

Handwritten musical score for piano accompaniment. The top staff is for the right hand and the bottom staff is for the left hand. The music is in 3/4 time and features complex harmonic structures with many accidentals.

90

Handwritten musical notation for measures 88 and 89. The notation is written on two staves in bass clef. Measure 88 begins with a dynamic marking of *mf*. Measure 89 also begins with *mf*. The music consists of eighth and sixteenth notes with various accidentals.

91

Handwritten musical notation for measures 90 and 91. The notation is written on two staves in bass clef. Measure 90 begins with a dynamic marking of *mf cant.*. Measure 91 also begins with *mf cant.*. The music features triplet markings over groups of notes.

Handwritten musical notation for measures 92 and 93. The notation is written on two staves in bass clef. Measure 92 begins with a dynamic marking of *f*. Measure 93 begins with *mf*. The music continues with eighth and sixteenth notes.

92

Handwritten musical notation for measures 94 and 95. The notation is written on two staves in bass clef. Measure 94 begins with a dynamic marking of *f*. Measure 95 begins with *f*. The music features eighth and sixteenth notes with various accidentals.

93

Handwritten musical notation for measures 96 and 97. The notation is written on two staves in bass clef. Measure 96 begins with a dynamic marking of *f*. Measure 97 begins with *mf*. The music features eighth and sixteenth notes with various accidentals.

94

Handwritten musical score for measures 25-26. The system consists of two staves. The upper staff begins with the dynamic marking *mp* and the tempo marking *grazioso*. The lower staff also begins with *mp* and *grazioso*. Both staves feature complex rhythmic patterns with many beamed notes and slurs. The key signature has one sharp (F#). Measure numbers 25 and 26 are boxed at the beginning of their respective staves.

Handwritten musical score for measures 27-28. The system consists of two staves. The upper staff begins with the dynamic marking *mf*. The lower staff begins with *mf*. The music continues with complex rhythmic patterns and slurs. Measure numbers 27 and 28 are boxed at the beginning of their respective staves.

Handwritten musical score for measures 29-30. The system consists of two staves. The upper staff begins with the dynamic marking *p*. The lower staff begins with *p*. The music continues with complex rhythmic patterns and slurs. Measure numbers 29 and 30 are boxed at the beginning of their respective staves.

Handwritten musical score for measures 31-32. The system consists of two staves. The upper staff begins with the dynamic marking *f*. The lower staff begins with *f*. The music continues with complex rhythmic patterns and slurs. Measure numbers 31 and 32 are boxed at the beginning of their respective staves.

Handwritten musical score for measures 33-34. The system consists of two staves. The upper staff begins with the dynamic marking *mf*. The lower staff begins with *mf*. The music continues with complex rhythmic patterns and slurs. Measure numbers 33 and 34 are boxed at the beginning of their respective staves.

