

**Z.**

**Messa  
S. Spiritus  
Kyrie**

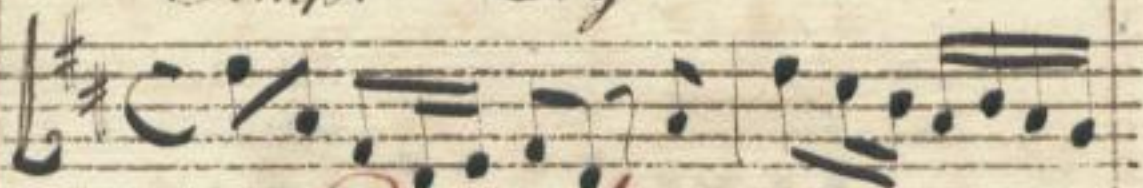
co. V. ni Ob. Fl. <sup>à 4. voci</sup> Tromb: Timp. ed Org.



**Gloria**

à 4. voci

co. V. ni Ob. V. la Corni, Trombe  
Timp: ed Org.



**Credo**

à 4. voci

co. V. ni Ob. V. la Corni, Trombe,  
Timp: ed Org.



8.

5.

**Sanctus**

à 4. voci

co. V. ni Ob. V. la Corni, Trombe  
Simpani ed Org.



**Agnus**

à 4. voci

co. V. ni Oboi. V. la Corni, Trombe  
Timp: ed Org.



Man. 2358-D-18