



2 | 8°  
1555

A. 626.

22 XII O- 377 .

*Macica  
serbska.*

A  
2

K

**Die, Boje, khwalimy.**

**TE - DEUM.**

*Mašica  
sertšica.*

Kulhownja  
V  
Mašicy Serbskeje

2/8<sup>o</sup> 1555

Handwritten text in a cursive script, likely a title or address, appearing as a mirror image or bleed-through from the reverse side of the page.

Handwritten text in a cursive script, appearing as a mirror image or bleed-through from the reverse side of the page.

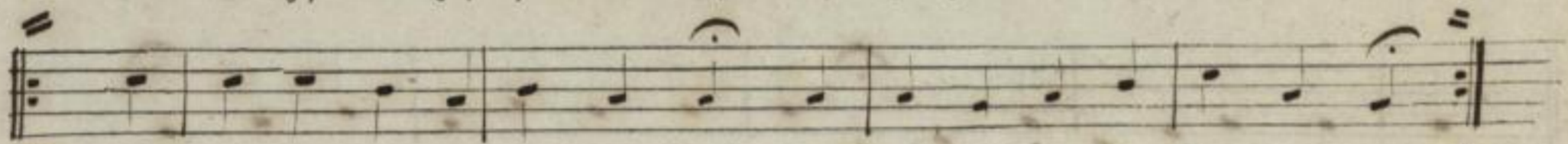
Two circular stamps or seals, appearing as mirror images or bleed-through from the reverse side of the page.

A circular stamp or seal, appearing as a mirror image or bleed-through from the reverse side of the page.

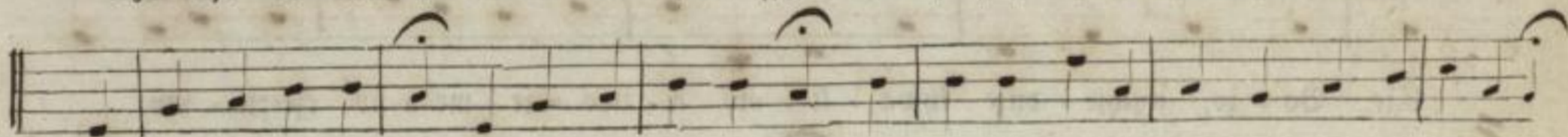
## Cze, Božo, chwylimy.



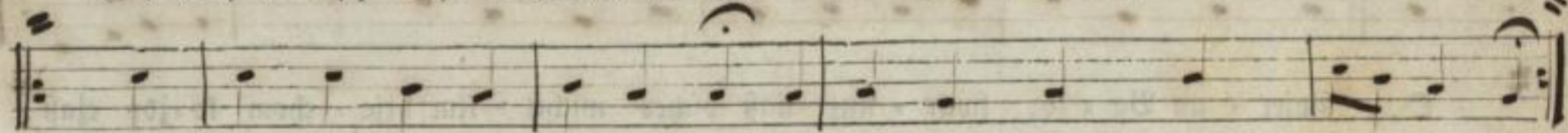
Cze, Bo - žo, chwa - li - my a šo cži dža - kuj - my!



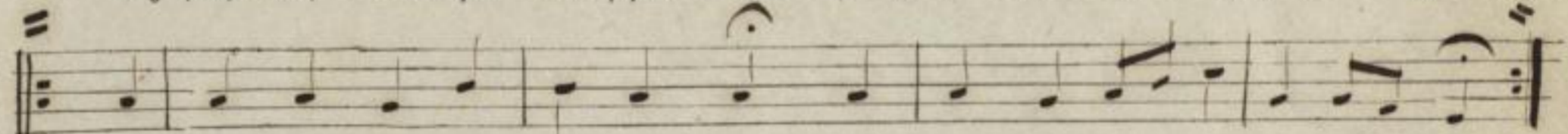
Cze, wó - tze we tej wječ - no - szi, šwjat cže - szi žy - te schje - ro - fi.  
 Cži jan - dže - ljo a ne - be - ša a schtož cžeš two - ju po - we - da;  
 Cži Che - ru - bim a Se - ra - fim spje - wa - ju s hto - šom wy - šo - fim:



D šwjaty je našch Bóh! D šwjaty je našch Bóh! D šwjaty je našch Bóh; knes wóšsta kóždeho!



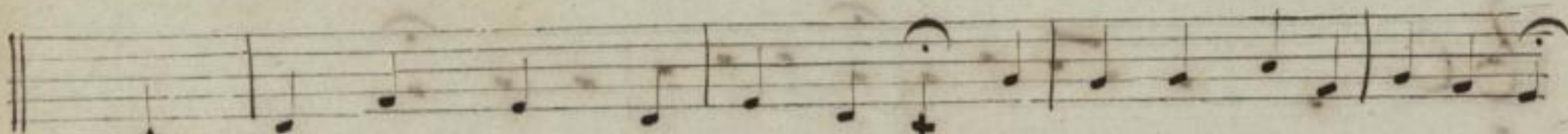
Two - ja Bo - ža móž a kra - le - stwo dže po wschjem šwje - cži schje - ro - fo.  
 Cži dwa - na - cže ja - po - schto - ljo a wschi - tzy cži pro - fe - to - jo,  
 Tež two - ji šwjer - ni mar - tra - rjo, cže, kne - že, chwa - lja wy - šo - fe.  
 To žy - le šwja - te šsche - szjan - stwo, tu na se - mi cže chwa - li wscho.  
 Cže Bo - ha wó - tza wje - cžne - oh', a twoj - 'ho šy - na lu - be - ho,  
 Tež šwja - tob' du - cha tro - schta - rja we je - nej ru - nej cže - szi ma.



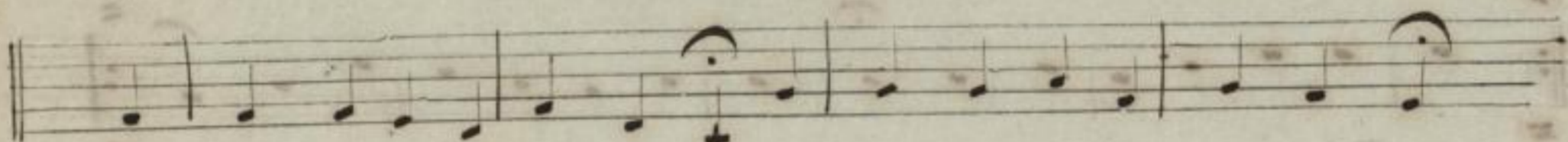
D cže - šny kra - lo, Khrý - scheje, ty šyn Bo - ha wó - tza wječ - ny šy;  
 Šy kne - žny ži - wot ne - saz - pil, tak šy ty twój lud wu - fu - pil;  
 Ty šy šmercž móž - nie psche - móht nam, wschjech wjer - nych pschi - nešt k ne - be - šam.  
 Ty še - džišch k Bo - žej pra - wi - žy a s wó - tžom w ru - nej cže - szi šy.  
 Ty šy tón šu - dnik pschi - cho - dny, ži - wych a mor - wych šu - džišch ty,  
 Njetk pom - haj two - jim wo - trocž - sam, kiž štwo - jej šrwju šy wu - móht šam,



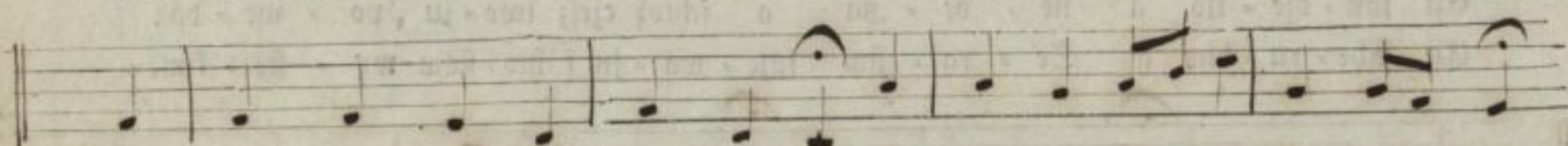
Ach, dai nam mje = sto na ne = bju w tym wje = cźnym sbo = žnym ži = we = nju.



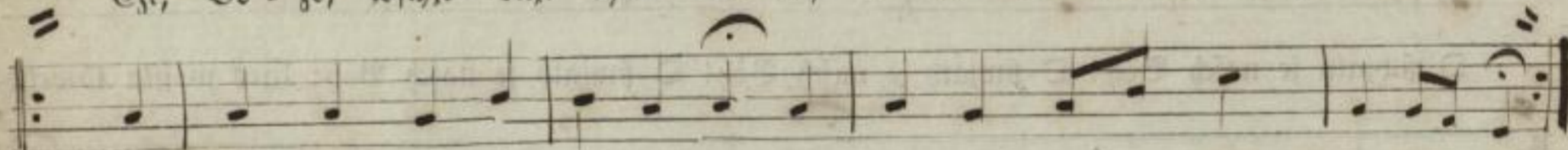
Pschindž, Schyn = scheje, two = jim k po = mo = zy, a žoh = nuj, ko = trychž sbo = žnik sy;



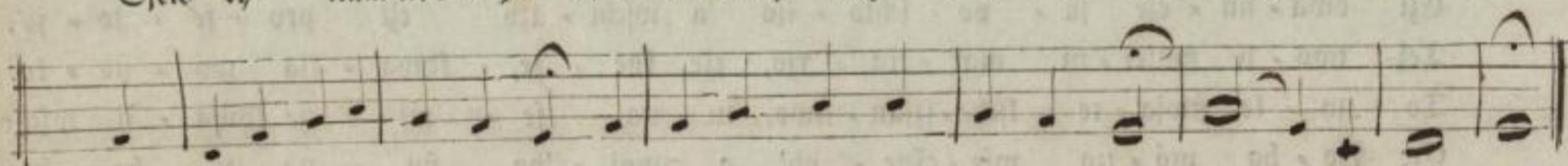
Žich py = taj a tež wob = sta = raj, a do wjež = no = sže po = sbe = haj.



Cže, Bo = žo, wschje = dnje khwa = li = my a two = je me = no cže = szi = my.



D, swjer = ny Bo = žo, swar = nuj naš psched wschit = sim hrje = chom kó = ždy cžas,  
Naš, kue = že Bo = žo, k hna = dži wsmi, a trosch = tuj naš wschjem hu = ben = stwi,  
Sjew ty nam two = ju do = bro = tu, kaž k te = bi ma = my na = dži = ju.



My na te-be so spu = scheja = my, ne = dai nam pschinež do ha = ni = by. Ha — meń! Ha — meń!

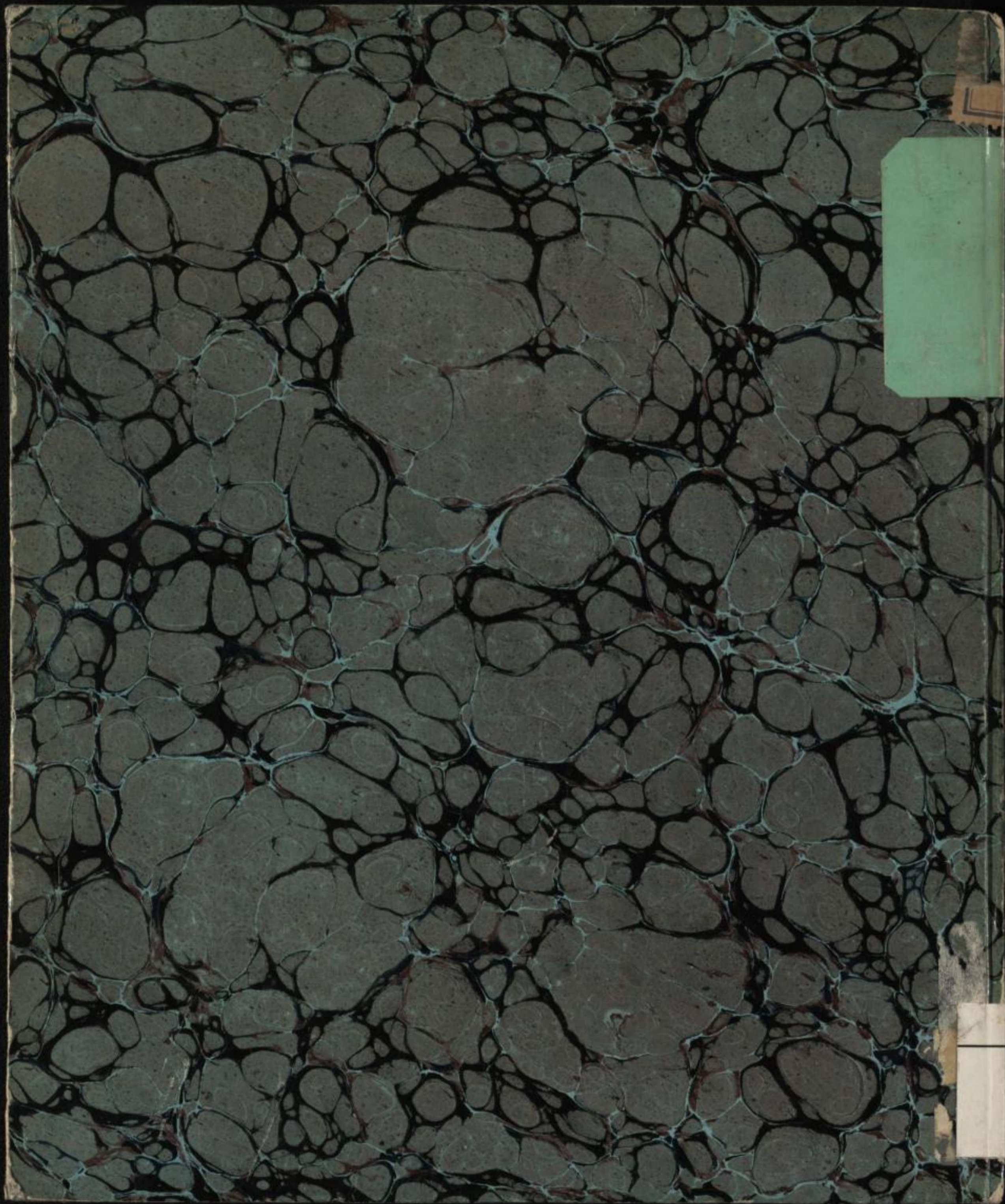
Gjisčejane pola R. B. Giki.











[Green label with illegible text]

[White label with illegible text]