

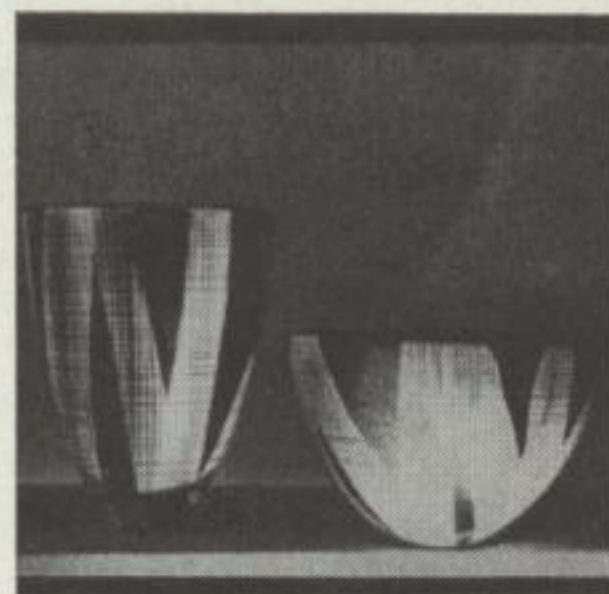
- 1 Vase
- 2 H. Weber
- 3 Entwicklungsstudio Düsseldorf
- 4 Keramik
- 5 1954

240



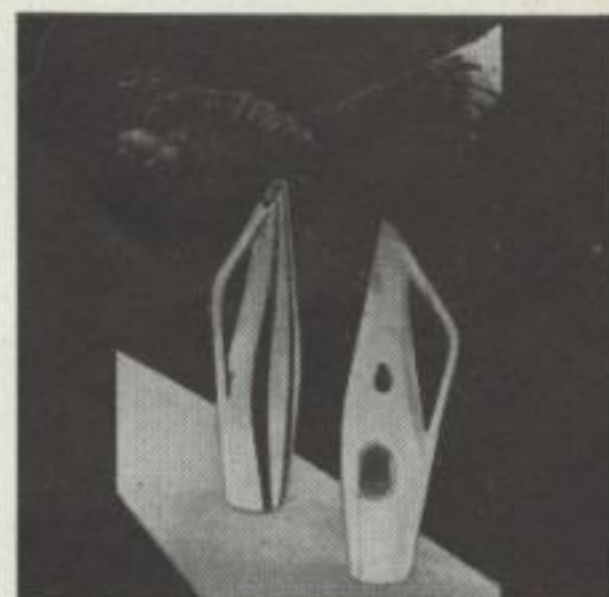
- 1 Vasen
- 2 M. Simmulson
- 3 Upsala-Ekeby (Schweden)
- 4 Keramik
- 5 ca. 1955

358



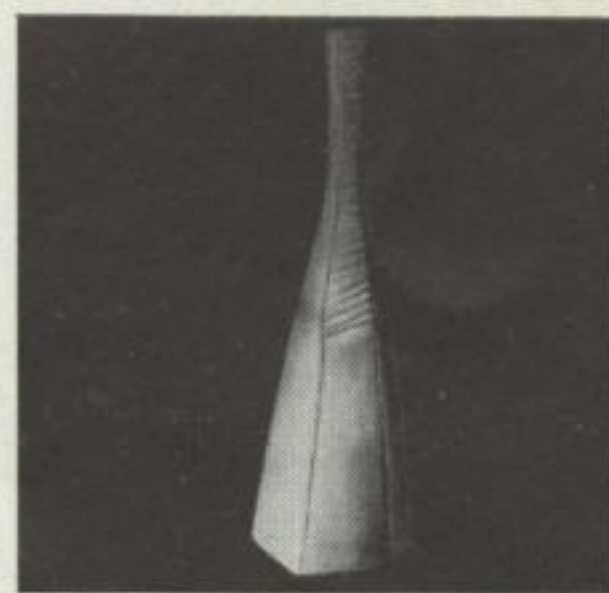
- 1 Vasen
- 2 H. Hoffmann-Lederer
- 3 Rosenthal-Porzellan AG
- 4 Porzellan
- 5 1954

1648



- 1 Vase m. reliefiertem Hals „Mantille“
- 2 Tr. Petri-Raben
- 3 Staatl. Porzellanmanufaktur Berlin
- 4 Porzellan
- 5 1957

1649



- 1 Vase 2496/87
- 2 S. v. Liebenstein
- 3 Lorenz Hutschenreuther AG
- 4 Astral-Porzellan
- 5 1957

450

