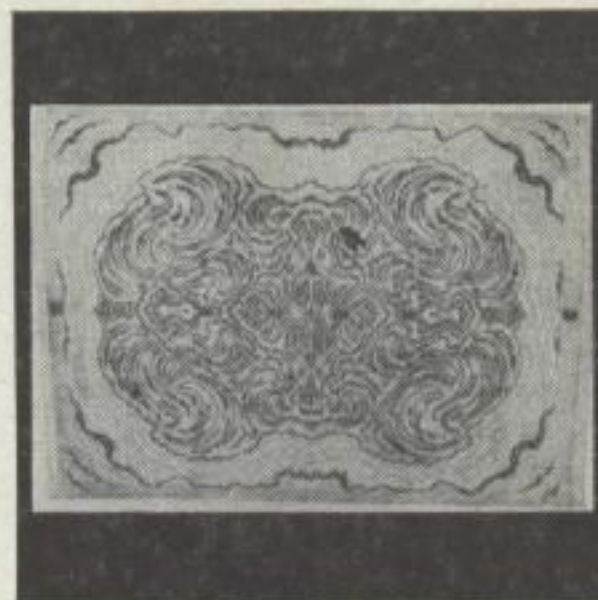


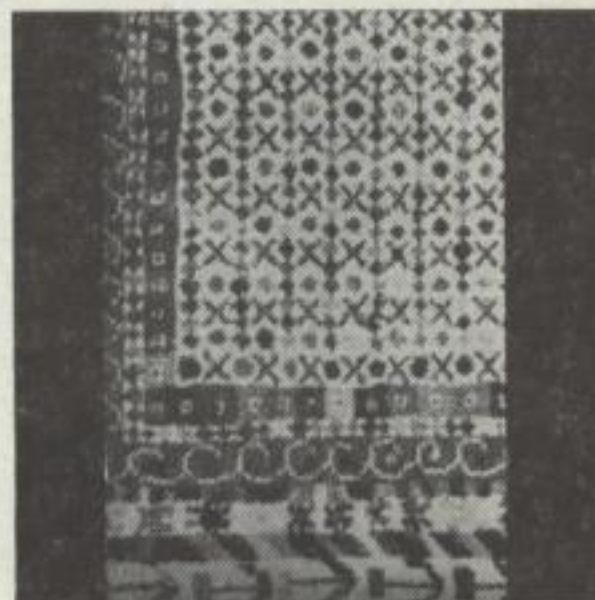
- 1 Teppich (Jugendstil)
- 3 O. Eckmann
- 3 nicht bekannt
- 4 Wolle
- 5 um 1890

1577



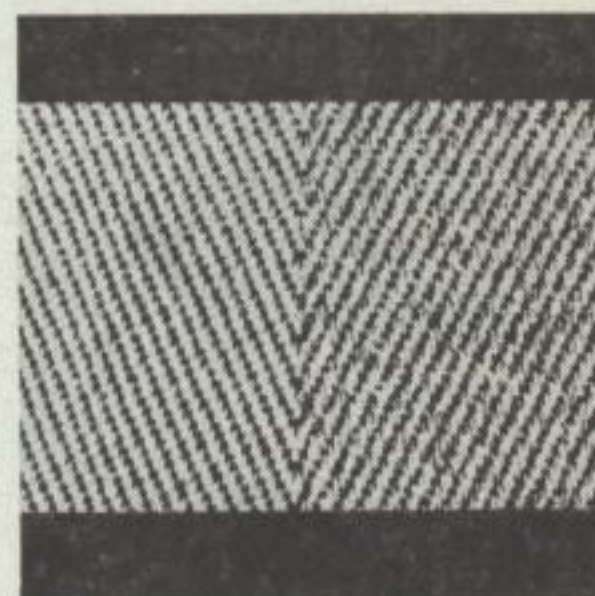
- 1 Teppich
- 2 Th. Hamann-Hartmann
- 3 Thyra Hamann-Hartmann
- 4 Wolle
- 5 1953

1305



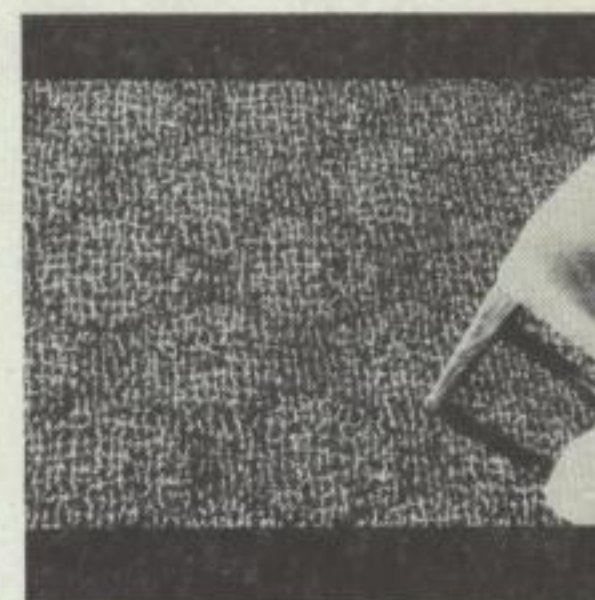
- 1 Teppich „Roland“
- 2 Werksentwurf
- 3 Bremer Tauwerk-Fabrik
- 4 Sisal (Struktur)
- 5 1959/60

1516



- 1 Wilton Broadloom Teppich
- 2 J. Galloway
- 3 Wm. C. Gray & Sons Ltd. (England)
- 4 Wolle
- 5 1956

1012



- 1 Anker-Tournay-Teppich
- 2 M. Hildebrand
- 3 Anker-Teppich-Fabrik, Gebr. Schoeller
- 4 Wolle
- 5 1957

1013

