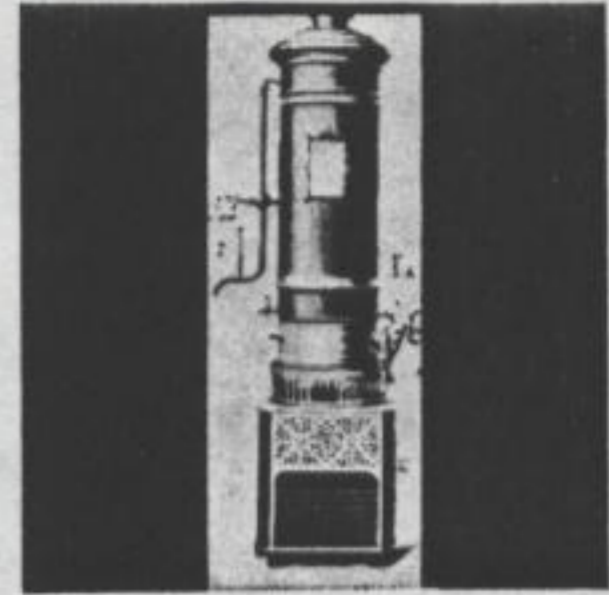


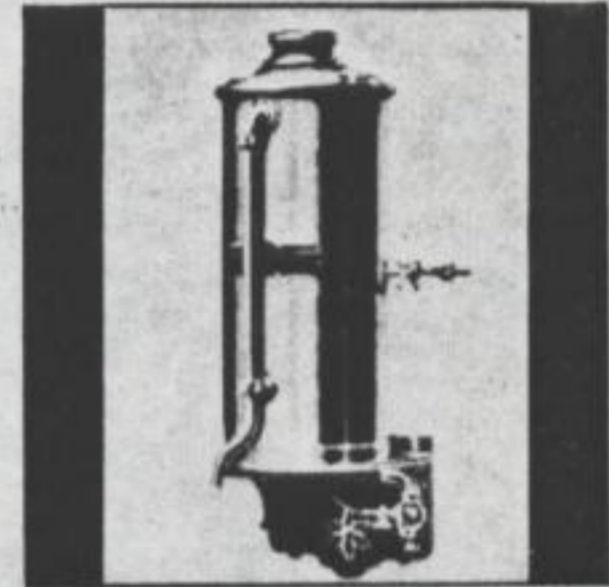
- 1 Gas-Badeofen
2 Werksentwurf
3 J. Vaillant KG.
4 Blech
5 um 1900

1868



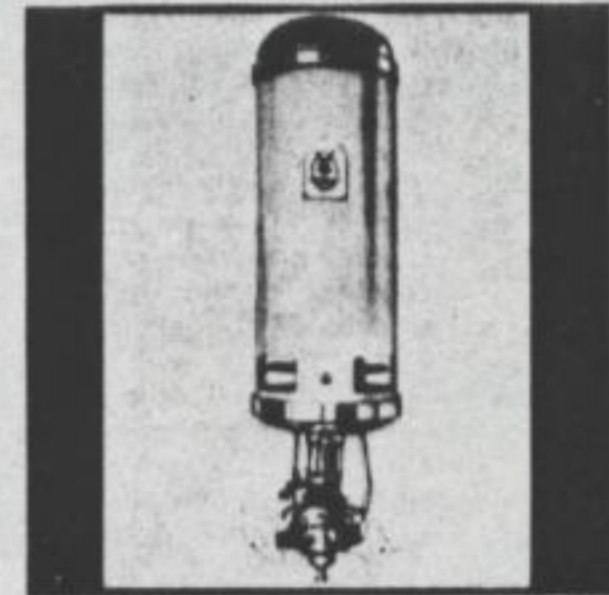
- 1 Gas-Durchlauferhitzer
2 Werksentwurf
3 J. Vaillant KG.
4 Blech
5 um 1900

591



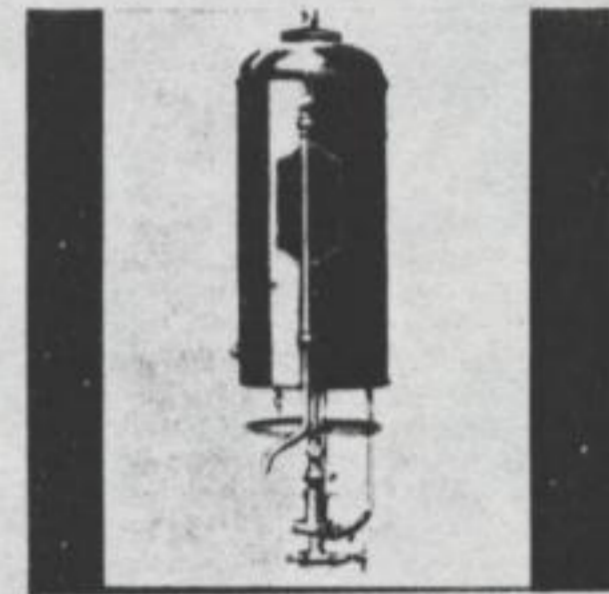
- 1 Gas-Durchlauferhitzer
2 Werksentwurf
3 J. Vaillant KG.
4 Blech (emailliert)
5 um 1940

486



- 1 Gas-Durchlauferhitzer
2 Werksentwurf
3 J. Vaillant KG.
4 Blech
5 um 1920

1869



- 1 Gas-Durchlauferhitzer
2 Werksentwurf
3 J. Vaillant KG.
4 Kupferblech
5 um 1920

550

