

135. Serbska meja.

Pólska.

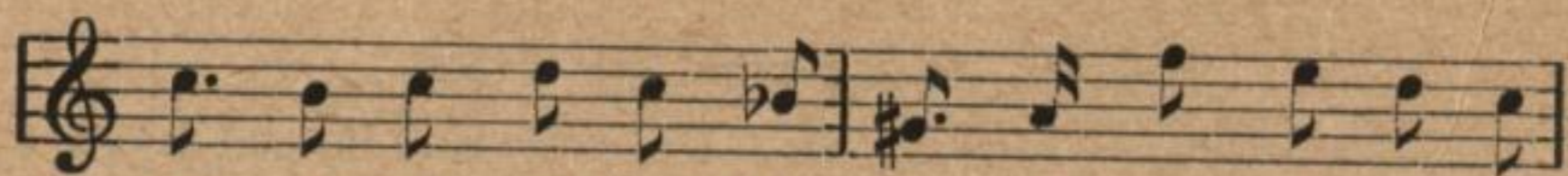
K. A. Kocor.



1. Ze - le - na ta me - ja, serbska les - na re - ja



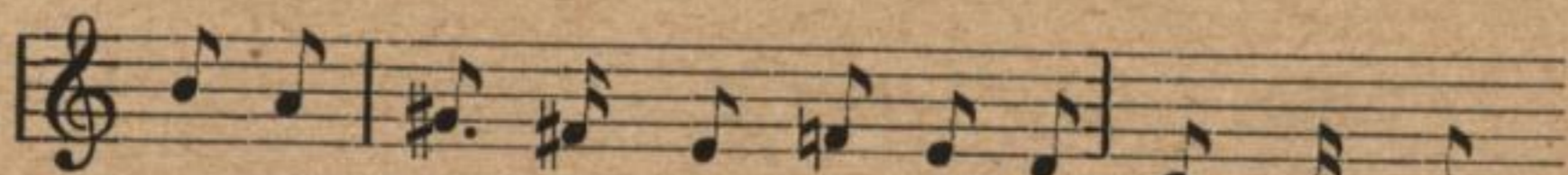
ki - wa krjanom' wje - se - lu. Tuž ho - tuj



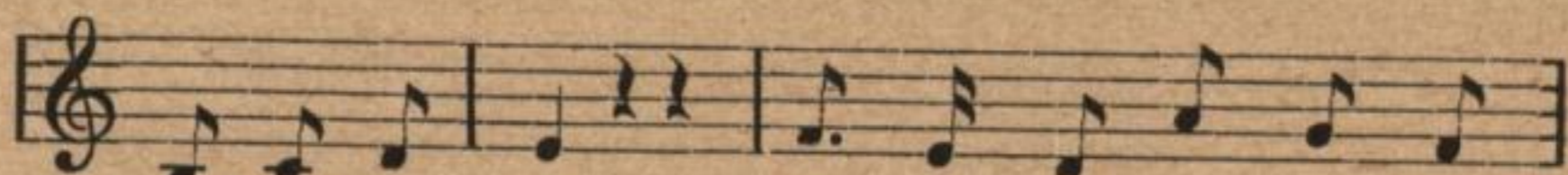
so, ty rja - ne hol - čo, ho - tuj so na rej - ku



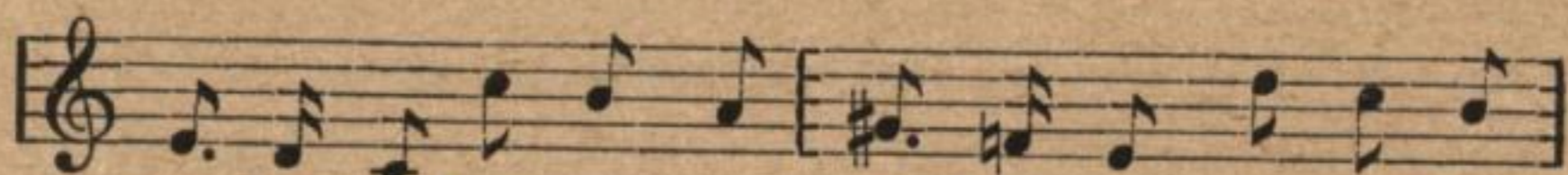
z pacholom na trawniku! Deš - čik bu - dže



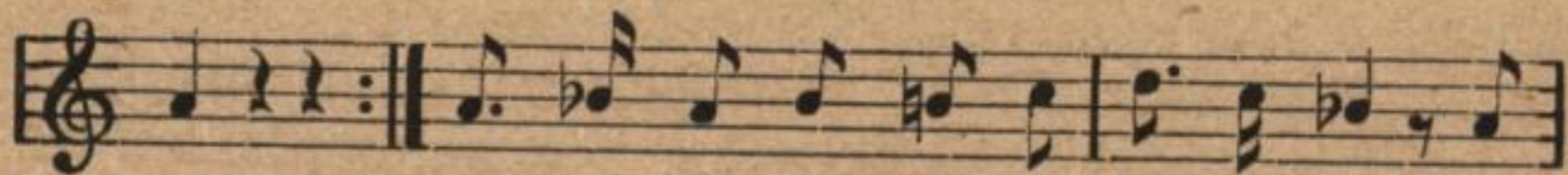
ka - pać, slónčko bu - dže sa - pać, bór - či nan



a wot - ra - dža. Ma - ćeř - ka, ta sta - ra,



ta je poľna swa - ra pjenježkow tych swětlych



dla. Mi - le nje - bjo lubje směwa so, a