

~~643~~

Faint, illegible text, possibly bleed-through from the reverse side of the page.

Datum

Name

TOC C A T E D A S T U D I O
P E R I L
G R A V E C E M B A L O
D E D I C A T E
A L L A R E A L M A E S T A
D I
M A R I A G I V S E P P A
R E G I N A D I P O L L O N I A
D A

LEONARDO FISCHER MAESTRO DI CAPPELLA
ROMANO.



Mus. 2722-T-1

1

Sacra Regia Medica

2
Sed et in hunc modum colitur in omnia
Medicamentis et in omnibus
acutis et in hunc modum colitur
et in hunc modum colitur
et in hunc modum colitur
et in hunc modum colitur
et in hunc modum colitur
et in hunc modum colitur
et in hunc modum colitur
et in hunc modum colitur

Sacra Reäl. Maestã.

Se pria d'insignire col Real Nome della Maestã Vostra questo Musical Tributo Lottò lungamente la mia Ambizione col mio spavento all'ardito disegno d'illustrare le tenebre di questi fogli collo splendore che lor deriva da un Raggio della di Lei Gioia, non fù senza ragione, poiche opponeua li incompatibile disuguaglianza che corre fra la bassezza dello stile, e l'elevata Grandezza del soggetto, a cui egli nõ uolea Confagrar si; Ma alla fine riflettendo che le Vostre Maestose Sale sono oggidi il piú illustre Ricouero, che uantino in Europa le Muse, e che la Benignità è una di quelle Virtù che piú distintamente uede si folgore nel gran Cuore della M^a V^a; Riportò la mia ambizione il Trionfo; accertandomi che la-

mendicità di queste pagine non giungerà disprezzata a Piedi
d'Vna Regina sì Illustre, e con questa sì ben fondata speranza egli
è uscito dalla penna, e col coraggio di questa lusinga, io lo reco a
Piedi della M^a V^a supplicandola con tutta l'umilissima adiuozion
del Cuore ad aggradire nella scarfezza del Tributo l'immenso ossequio
di chi lo offerisce, ed onorando l'operadei dilei Benignissimo aggradi-
mento, aignarlanel'autore con quel glorioso carattere con cui egli
si crede permessa la sorte di insignirsi

Di V^a R^l M^a

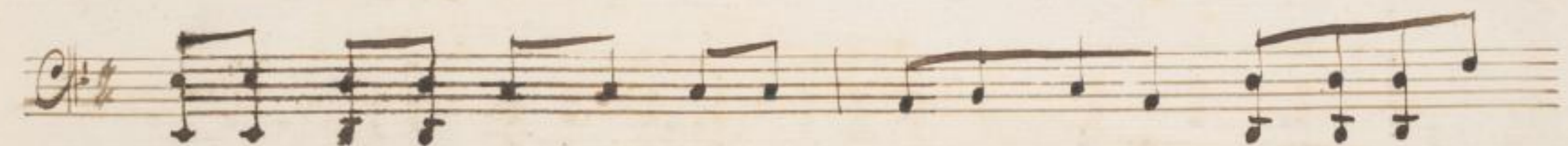
umiliss: deuotiss: & ossequ: seru:

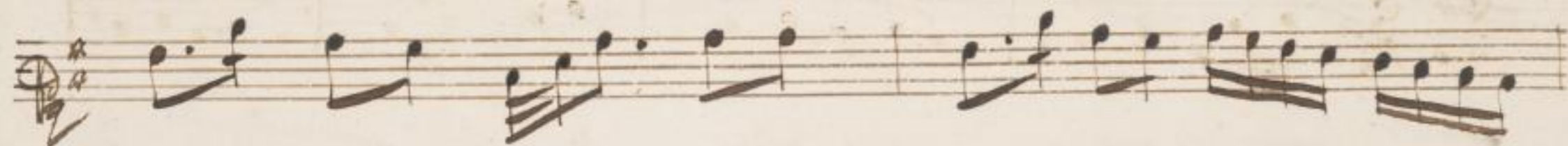
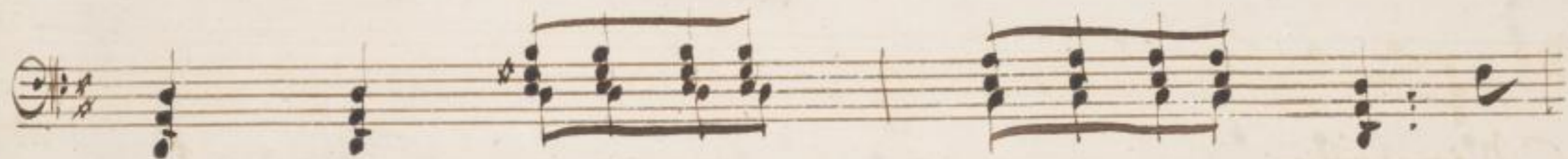
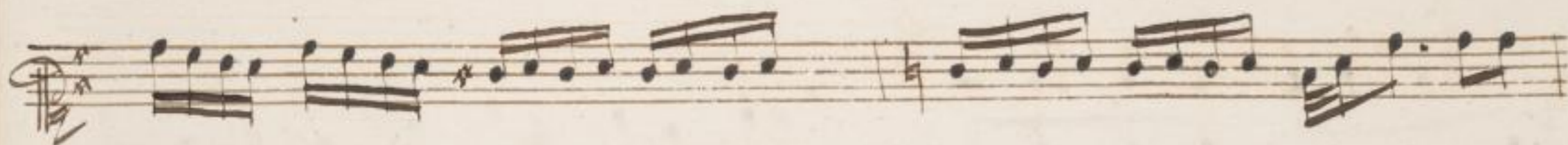
leonardo fischer

All:

Handwritten musical score for a piece titled "All:". The score consists of six staves of music. The first staff is in bass clef with a common time signature. The second staff is in treble clef with a common time signature. The third staff is in treble clef with a common time signature and contains two triplet markings. The fourth staff is in bass clef with a common time signature. The fifth staff is in treble clef with a common time signature. The sixth staff is in bass clef with a common time signature. A blue circular stamp is visible on the fourth staff. The page number "5" is written at the bottom center.

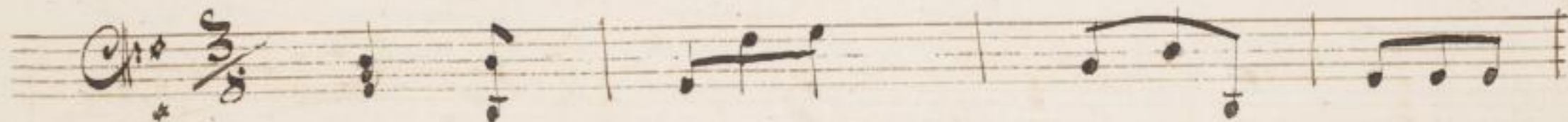
A page of handwritten musical notation on six staves. The notation is in brown ink on aged paper. The first staff begins with a treble clef, a key signature of one sharp (F#), and a 3/4 time signature. It contains several measures of music, including a triplet of eighth notes and a pair of eighth notes beamed together. The second staff starts with a bass clef and continues the piece. The third staff returns to a treble clef and features more complex rhythmic patterns with beamed notes. The fourth staff uses a bass clef and shows a mix of single notes and chords. The fifth staff is in treble clef and consists of a series of ascending eighth notes. The sixth staff is in bass clef and continues with eighth-note patterns. The page is numbered '6' at the bottom center.

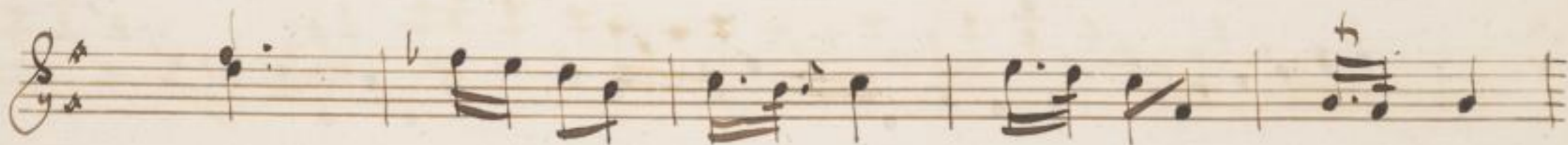






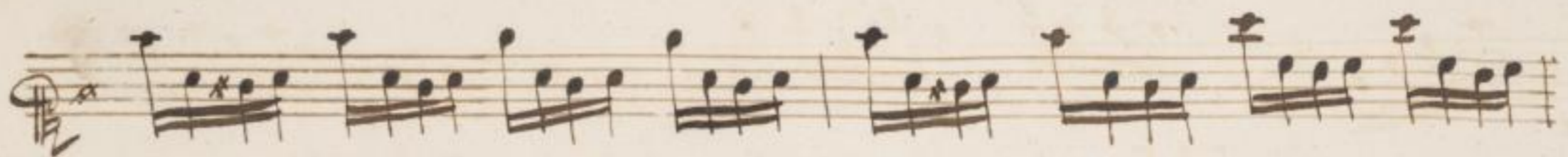
Minuetto.

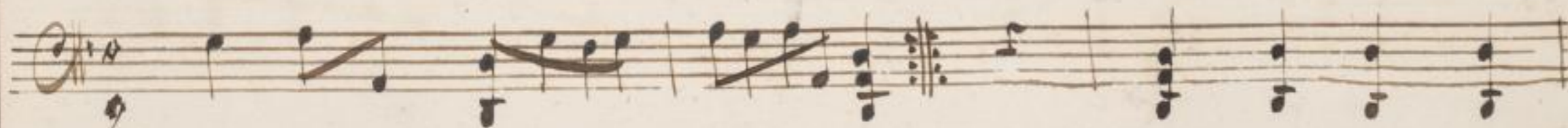
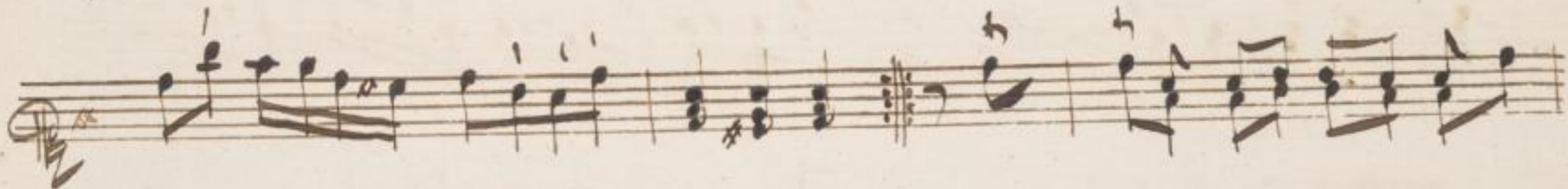
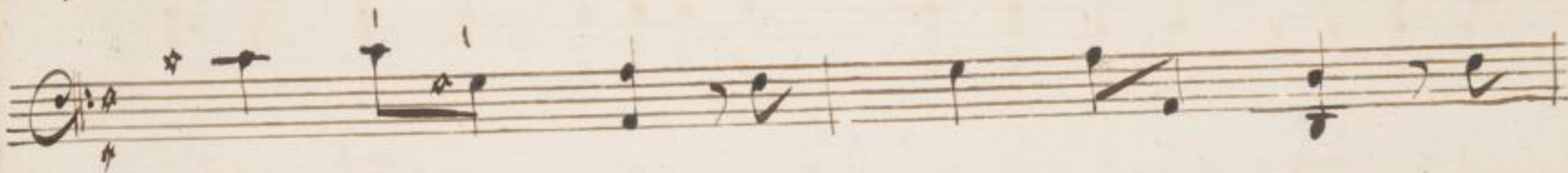
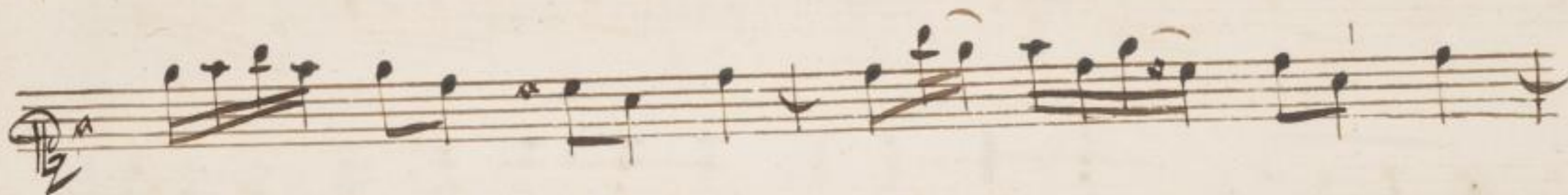






A page of handwritten musical notation on six staves. The notation is in brown ink on aged paper. The first, third, and fifth staves begin with a treble clef and a key signature of one sharp (F#). The second, fourth, and sixth staves begin with a bass clef and a key signature of one sharp (F#). The music consists of various rhythmic patterns, including eighth and sixteenth notes, and rests. The notation is clear and legible, with some ink bleed-through from the reverse side of the page.





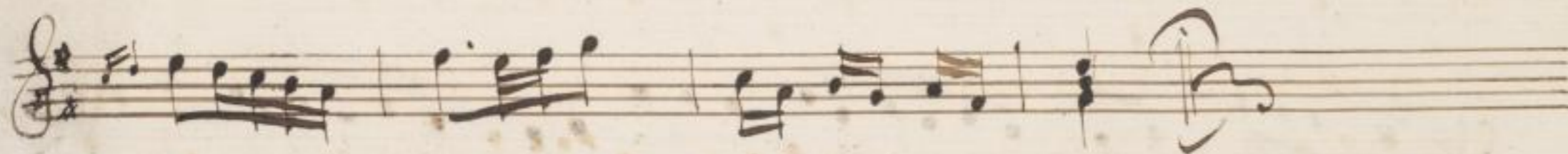


A handwritten musical score consisting of six staves. The notation is in brown ink on aged, yellowish paper. The first staff begins with a treble clef, a key signature of one sharp (F#), and a 2/4 time signature. The music features a series of eighth and sixteenth notes, with some notes beamed together. The second staff continues the melody with similar rhythmic patterns. The third staff shows a more complex rhythmic structure with some notes beamed together. The fourth staff features a series of chords, possibly a bass line or accompaniment. The fifth staff continues with a mix of single notes and chords. The sixth staff concludes the piece with a final melodic line. The handwriting is clear and consistent throughout.

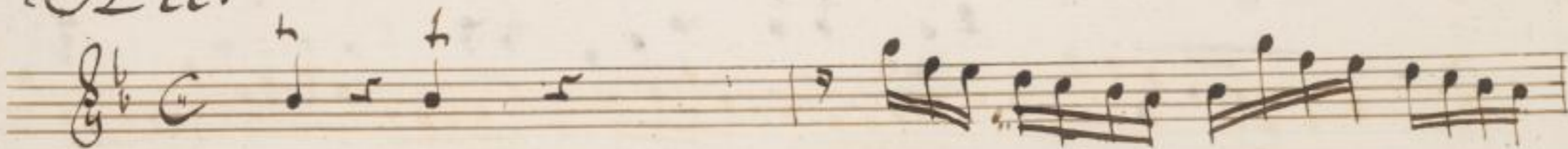


Minuetto.

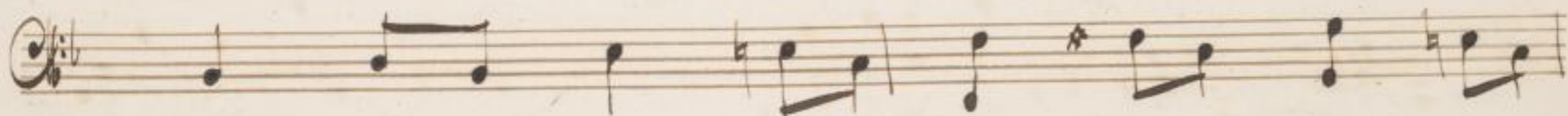




All:

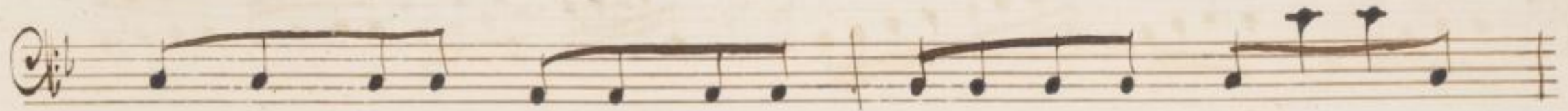
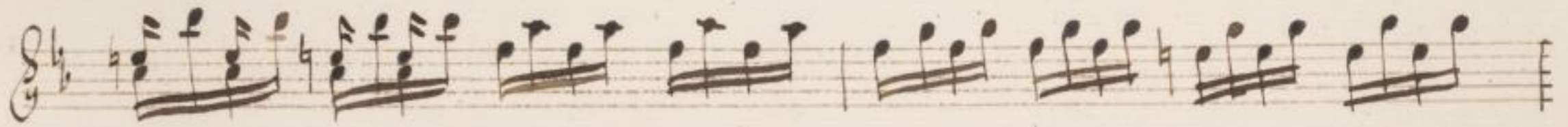


A handwritten musical score consisting of six staves. The notation is in brown ink on aged paper. The first staff is in treble clef with a key signature of one flat and a 3/4 time signature. It features a melodic line with some slurs and accents. The second staff is in bass clef with a key signature of one flat, containing a bass line with some rests. The third staff is in treble clef with a key signature of one flat, showing a more active melodic line. The fourth staff is in bass clef with a key signature of one flat, continuing the bass line. The fifth staff is in treble clef with a key signature of one flat, featuring a melodic line with many slurs. The sixth staff is in bass clef with a key signature of one flat, continuing the bass line. The music is written in a clear, legible hand.



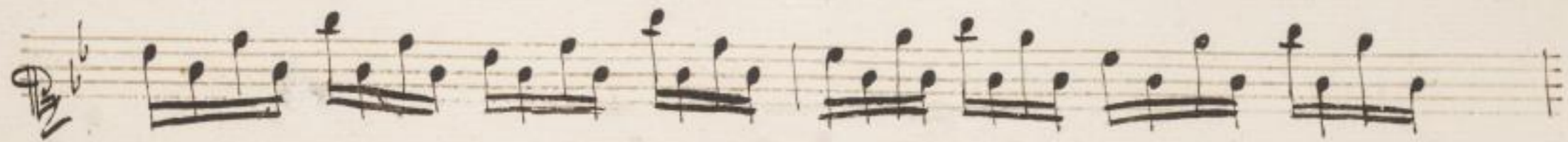


A handwritten musical score consisting of six staves. The notation is in brown ink on aged, yellowish paper. The first staff begins with a treble clef, a key signature of one flat (B-flat), and a common time signature (C). The music features a variety of note values, including eighth and sixteenth notes, and rests. The second staff starts with a different clef, possibly a soprano or alto clef, and continues the melodic line. The third and fourth staves use treble and bass clefs respectively, showing a more complex rhythmic and melodic development. The fifth staff features a series of notes with stems pointing upwards, possibly indicating a specific articulation or a particular instrument's part. The sixth staff is a bass line, characterized by a series of notes with stems pointing downwards, often appearing as a harmonic accompaniment.

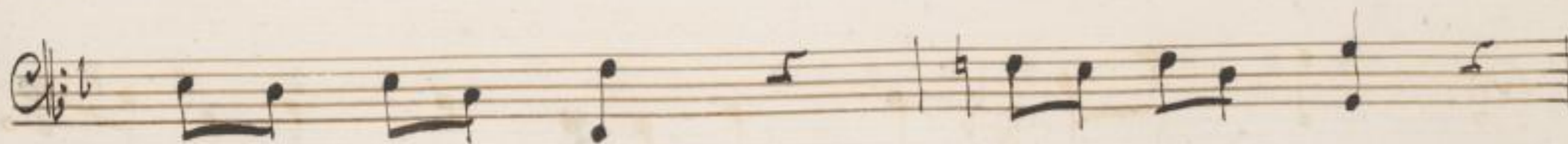
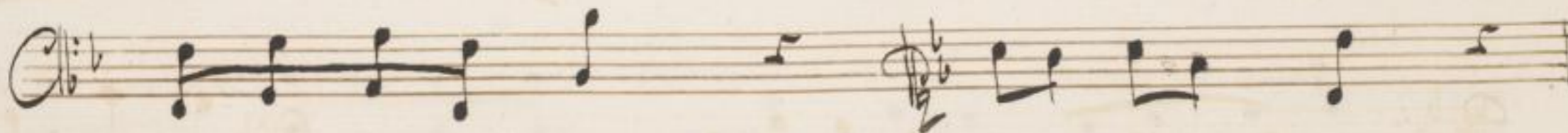
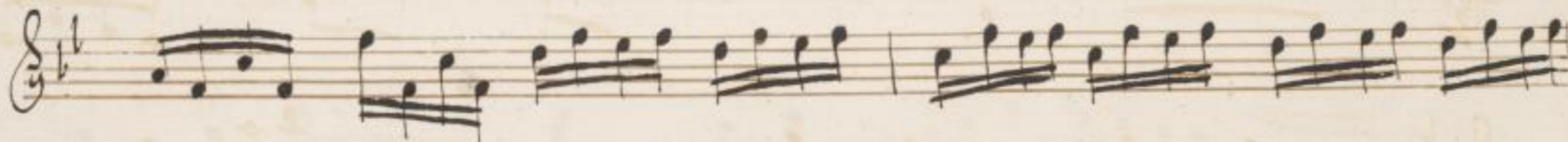
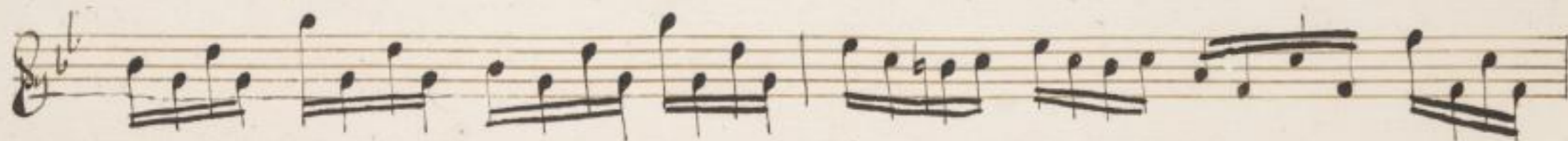


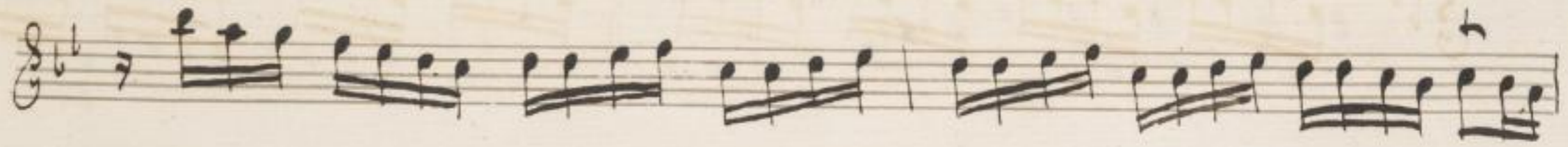
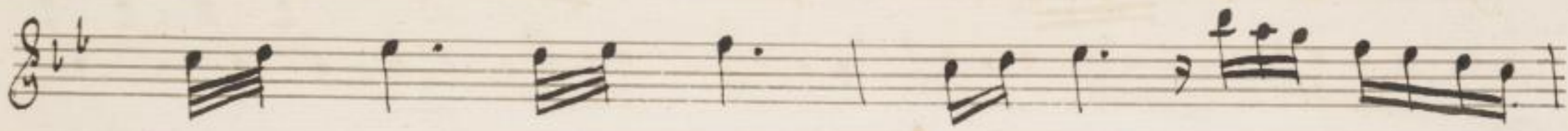
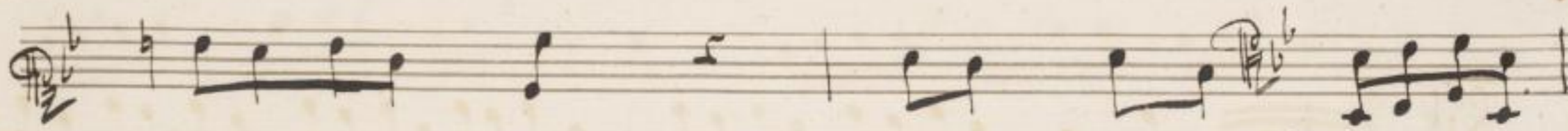
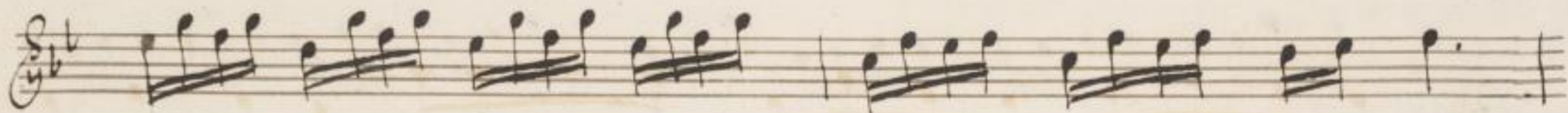
A page of handwritten musical notation on six staves. The notation is in black ink on aged, yellowed paper. The staves are arranged vertically. The first staff begins with a treble clef and a key signature of one flat (B-flat). The second staff begins with a bass clef and a key signature of one flat. The third staff begins with a treble clef and a key signature of one flat. The fourth staff begins with a bass clef and a key signature of one flat. The fifth staff begins with a treble clef and a key signature of one flat. The sixth staff begins with a bass clef and a key signature of one flat. The notation includes various note values, rests, and bar lines. There are some faint markings and corrections throughout the score.



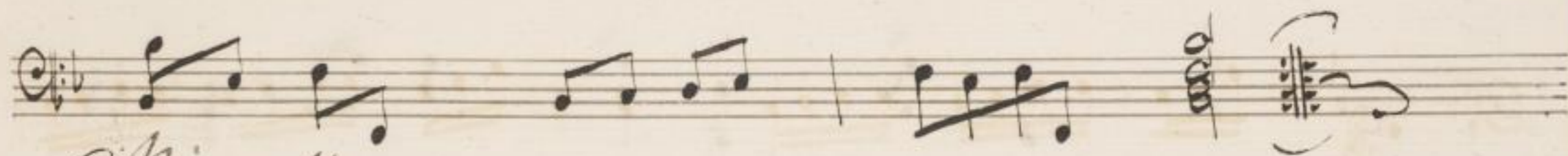


A page of handwritten musical notation on six staves. The notation is in a historical style, likely from the 18th or 19th century. The first staff begins with a treble clef and a key signature of one flat (B-flat). The music consists of various rhythmic values, including eighth and sixteenth notes, and rests. There are several measures of music, with some measures containing multiple notes beamed together. The paper shows signs of age, with some staining and discoloration. The number '27' is written at the bottom center of the page.

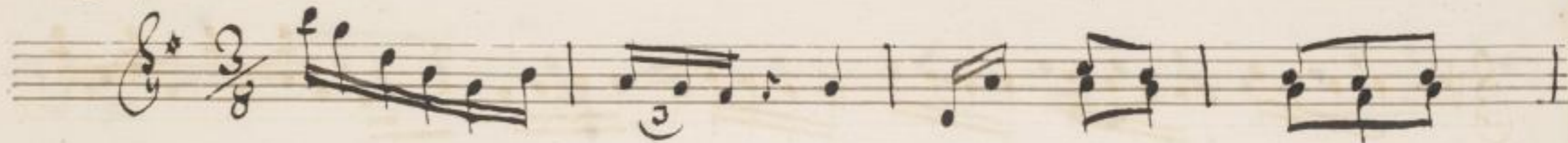








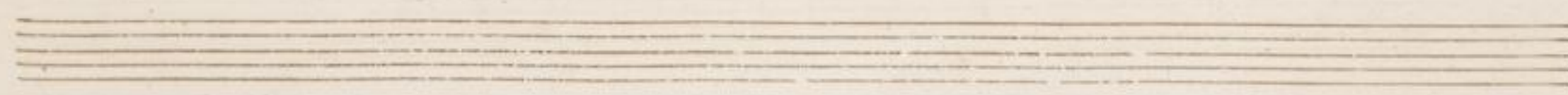
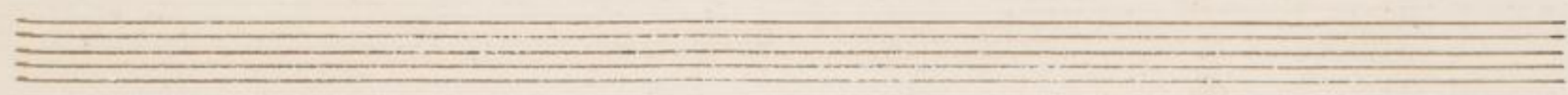
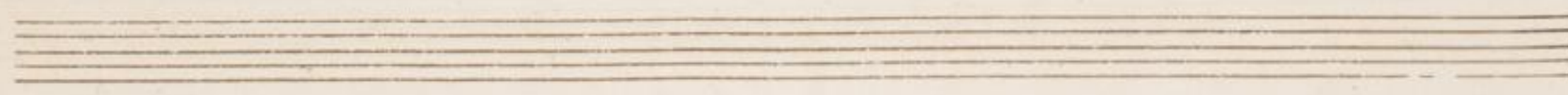
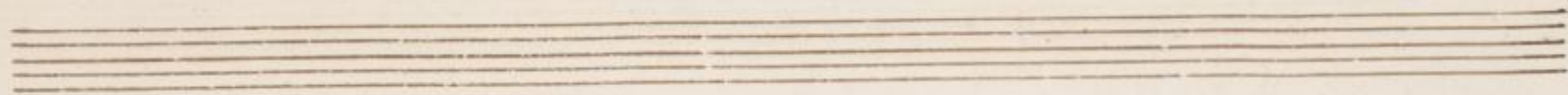
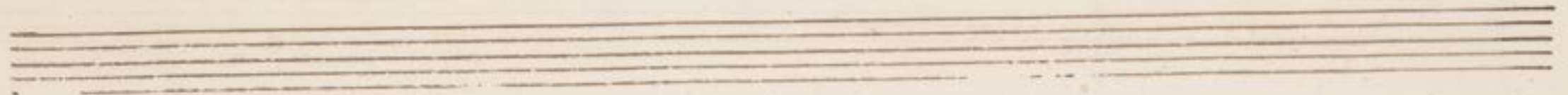
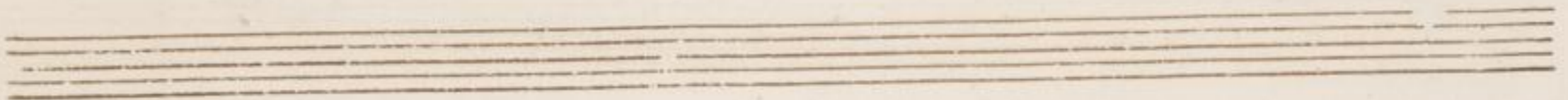
Minuetto.



A handwritten musical score consisting of six staves. The notation is in a historical style, likely from the 18th or 19th century. The first staff uses a treble clef and a key signature of one sharp (F#). The second staff uses a bass clef. The third staff uses a treble clef. The fourth staff uses a bass clef. The fifth and sixth staves use treble clefs. The music features various note values, including minims, crotchets, and quavers, along with rests and bar lines. The handwriting is clear and consistent throughout the page.









And.

A handwritten musical score consisting of six staves. The notation is in brown ink on aged paper. The first staff begins with a treble clef, a key signature of two sharps (F# and C#), and a common time signature (C). The music is written in a style characteristic of the 18th or 19th century, featuring various note values, rests, and dynamic markings. The second staff uses a bass clef. The third and fourth staves return to the treble clef. The fifth and sixth staves use the bass clef. The piece concludes with a final cadence on the sixth staff.

A handwritten musical score consisting of six staves. The notation is in brown ink on aged, yellowish paper. The first staff begins with a treble clef, a key signature of one sharp (F#), and a 2/8 time signature. It contains a melodic line with eighth and sixteenth notes. The second staff uses a bass clef and contains a bass line with chords and some melodic fragments. The third staff is in treble clef and continues the melodic line. The fourth staff is in bass clef and features a series of chords. The fifth staff is in treble clef and continues the melodic line. The sixth staff is in bass clef and contains chords and a melodic line. The music concludes with a double bar line and a final cadence.

A page of handwritten musical notation on six staves. The notation is in brown ink on aged, yellowish paper. The first staff begins with a treble clef, a key signature of one sharp (F#), and a 2/4 time signature. The music consists of six staves of notation, featuring various rhythmic values, slurs, and dynamic markings. The notation is dense and characteristic of 18th or 19th-century manuscript notation.

A page of handwritten musical notation on six staves. The notation is in brown ink on aged, yellowish paper. The first five staves contain complex musical passages with various note values, rests, and clefs. The sixth staff shows a simpler, more rhythmic pattern. The page is numbered '40' at the bottom center.

A handwritten musical score consisting of six staves. The notation is in brown ink on aged paper. The first staff is in treble clef with a key signature of one sharp (F#) and a 4/4 time signature. It features a melodic line with eighth and sixteenth notes, including a double bar line and a change in clef to a different treble clef. The second staff is in bass clef with a key signature of one sharp and a 4/4 time signature, containing a bass line with chords and single notes. The third staff is in treble clef with a key signature of one sharp and a 4/4 time signature, featuring a melodic line with trills marked 'tr.'. The fourth staff is in bass clef with a key signature of one sharp and a 4/4 time signature, containing a bass line with chords and single notes. The fifth staff is in treble clef with a key signature of one sharp and a 4/4 time signature, featuring a melodic line with trills marked 'tr.'. The sixth staff is in bass clef with a key signature of one sharp and a 4/4 time signature, containing a bass line with chords and single notes.

A page of handwritten musical notation on six staves. The notation is in brown ink on aged paper. The first staff begins with a treble clef, a key signature of one sharp (F#), and a 4/4 time signature. The music consists of various rhythmic values, including eighth and sixteenth notes, and rests. The second and third staves continue the melodic and harmonic development. The fourth staff features a series of chords. The fifth and sixth staves show further melodic and harmonic progression. The notation is clear and legible, with some minor ink bleed-through from the reverse side of the page.

A handwritten musical score consisting of six staves. The notation is in brown ink on aged, yellowish paper. The first staff begins with a treble clef, a key signature of one sharp (F#), and a common time signature (C). The music features a variety of note values, including eighth and sixteenth notes, and rests. Some notes are beamed together. The second staff continues the melody with similar note values. The third staff shows a change in the key signature to two sharps (F# and C#). The fourth staff continues with the new key signature. The fifth and sixth staves conclude the piece with a final cadence, marked by a double bar line and a stylized flourish. There are some small handwritten annotations above certain notes, possibly indicating fingerings or performance instructions.

Largo.

A handwritten musical score consisting of six staves. The notation is in brown ink on aged paper. The first staff begins with a treble clef and a key signature of one sharp (F#). The second staff begins with a bass clef and the same key signature. The third staff begins with a treble clef and a key signature of one sharp. The fourth staff begins with a bass clef and a key signature of one sharp. The fifth staff begins with a treble clef and a key signature of one sharp, and includes a 'tr.' (trill) marking above a note. The sixth staff begins with a bass clef and a key signature of one sharp. The music features various rhythmic values, including eighth and sixteenth notes, and rests. The notation is dense and characteristic of 18th or 19th-century manuscript notation.

A handwritten musical score on six staves. The first two staves are in treble clef with a key signature of one sharp (F#) and a common time signature (C). The first staff contains a melodic line with some slurs and a fermata. The second staff contains a bass line with some slurs and a fermata. The third staff is in treble clef with a common time signature and a tempo marking 'Allegro' written in cursive. It contains a melodic line with many slurs. The fourth staff is in treble clef with a common time signature and contains a bass line with many slurs. The fifth staff is in treble clef with a common time signature and contains a melodic line with many slurs. The sixth staff is in treble clef with a common time signature and contains a bass line with many slurs. The paper is aged and shows some staining.



A handwritten musical score consisting of six staves. The notation is in brown ink on aged paper. The top staff features a treble clef and a key signature of one sharp (F#). It contains a complex melodic line with many beamed eighth and sixteenth notes, some with slurs. The second staff has a bass clef and contains a simpler accompaniment with fewer notes and some rests. The third staff returns to a treble clef and continues the melodic line. The fourth staff has a bass clef and continues the accompaniment. The fifth and sixth staves continue the melodic and accompanimental lines respectively. The notation includes various note values, rests, and slurs.

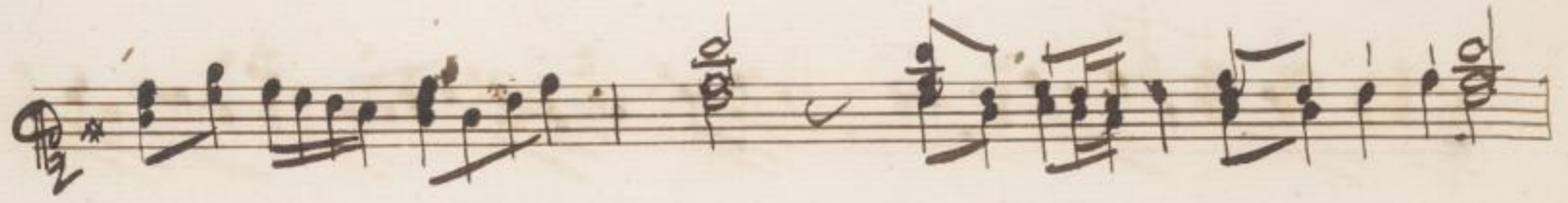
A page of handwritten musical notation on six staves. The notation is in brown ink on aged, yellowish paper. The first staff begins with a treble clef and a key signature of one sharp (F#). The music consists of various rhythmic values, including eighth and sixteenth notes, and rests. There are several measures with complex chordal structures. The second staff continues the melodic line with eighth notes. The third staff features a mix of eighth and sixteenth notes, with some measures containing multiple notes on a single stem. The fourth staff shows a more active melodic line with eighth notes. The fifth staff is a dense melodic passage with many sixteenth notes. The sixth staff concludes with a series of eighth notes and rests. The page number '49' is written in the center at the bottom.

A page of handwritten musical notation on six staves. The notation is in brown ink on aged paper. The first staff begins with a treble clef, a key signature of one sharp (F#), and a common time signature (C). The music consists of various note values, including eighth and sixteenth notes, and rests. The second staff starts with a bass clef and a common time signature. The third staff begins with a treble clef and a common time signature. The fourth staff starts with a bass clef and a common time signature. The fifth staff begins with a treble clef and a common time signature. The sixth staff starts with a bass clef and a common time signature. The notation is dense and includes many beamed notes and rests.

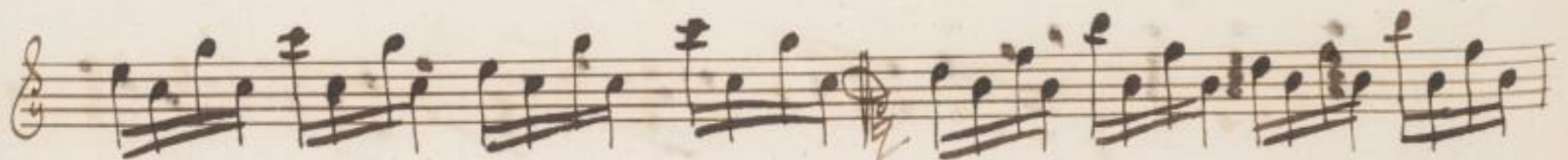
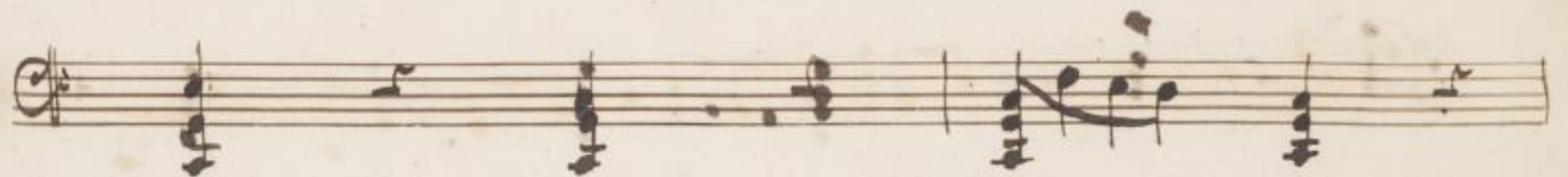
A page of handwritten musical notation on six staves. The notation is in brown ink on aged, yellowish paper. The first staff begins with a treble clef, a key signature of one sharp (F#), and a common time signature (C). The music consists of six staves of notation, featuring various rhythmic values, including eighth and sixteenth notes, and rests. The notation is dense and characteristic of 18th or 19th-century manuscript notation.

A page of handwritten musical notation on six staves. The notation is in brown ink on aged paper. The first five staves are in bass clef with a key signature of one sharp (F#). The sixth staff is in treble clef with a key signature of one sharp (F#). The music consists of various rhythmic patterns, including eighth and sixteenth notes, and rests. There are several asterisks (*) and a double bar line with repeat dots (||) scattered throughout the score.

Handwritten musical score on page 53, featuring six staves of music. The notation is in brown ink on aged paper. The score consists of six staves, each with a clef and a key signature. The first staff begins with a treble clef and a key signature of one flat. The music is written in a style characteristic of the 18th or 19th century, with various note values, rests, and dynamic markings. The second staff has a treble clef and a key signature of one flat. The third staff has a treble clef and a key signature of one flat. The fourth staff has a bass clef and a key signature of one flat. The fifth staff has a treble clef and a key signature of one flat. The sixth staff has a bass clef and a key signature of one flat. The page number 53 is visible at the bottom center.



A page of handwritten musical notation on six staves. The notation is in brown ink on aged, yellowish paper. The first staff begins with a treble clef and a key signature of one flat. The second staff begins with a bass clef. The third staff begins with a treble clef. The fourth staff begins with a bass clef. The fifth staff begins with a treble clef. The sixth staff begins with a bass clef. The music consists of various note values, rests, and bar lines, with some complex rhythmic patterns and accidentals. There are some stains and foxing on the paper, particularly in the upper right and lower middle areas.



A page of handwritten musical notation on six staves. The notation is in brown ink on aged, yellowish paper. The first staff begins with a treble clef and a key signature of one flat (B-flat). The music consists of eighth and sixteenth notes, often beamed together in groups. The second staff uses a bass clef and features block chords and some moving lines. The third staff is in treble clef with similar rhythmic patterns to the first. The fourth staff is in bass clef with a more melodic line. The fifth staff is in treble clef and includes some complex rhythmic figures and a double bar line. The sixth staff is in bass clef and continues the harmonic accompaniment. The page shows signs of age, including some foxing and staining.

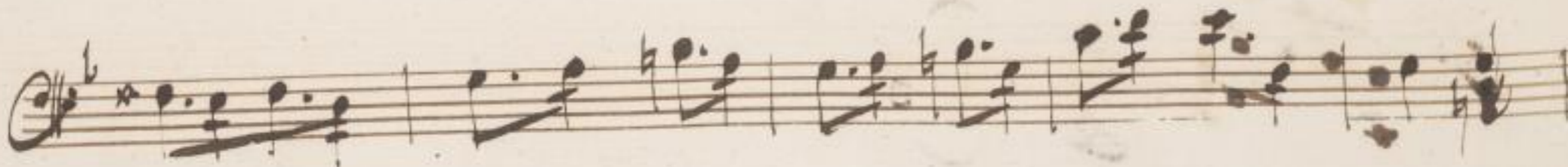
A page of handwritten musical notation on six staves. The notation is in a historical style, likely from the 18th or 19th century. The first staff begins with a treble clef and a common time signature. The second staff begins with a bass clef. The third staff begins with a treble clef and a common time signature. The fourth staff begins with a bass clef. The fifth staff begins with a treble clef and a common time signature. The sixth staff begins with a bass clef. The music consists of various note values, rests, and bar lines, with some complex rhythmic patterns and accidentals.

A page of handwritten musical notation on six staves. The notation is in brown ink on aged, slightly stained paper. The first five staves are in treble clef, and the sixth staff is in bass clef. The music consists of various note values, including eighth and sixteenth notes, and rests. There are some ink smudges and corrections throughout the score.

A page of handwritten musical notation on six staves. The notation is in brown ink on aged, slightly stained paper. The first four staves use treble clefs, while the fifth and sixth staves use bass clefs. The music consists of various note values, including eighth and sixteenth notes, and rests. There are some ink smudges and faint markings throughout the score.

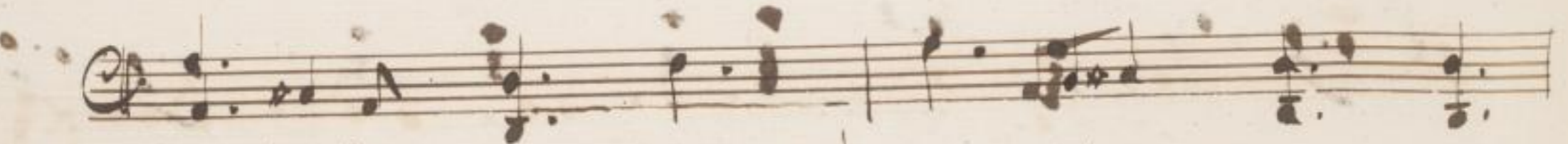
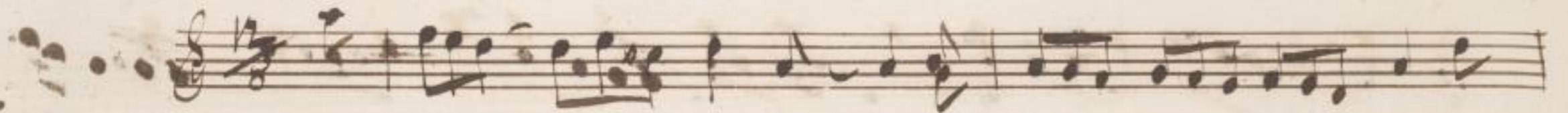
A page of handwritten musical notation on six staves. The notation is in a historical style, likely from the 18th or 19th century. The first four staves contain dense musical notation with many notes and rests. The fifth and sixth staves show a significant change in notation, with large, stylized symbols and fewer notes, possibly indicating a different part of the piece or a specific performance instruction. The paper is aged and shows some staining.

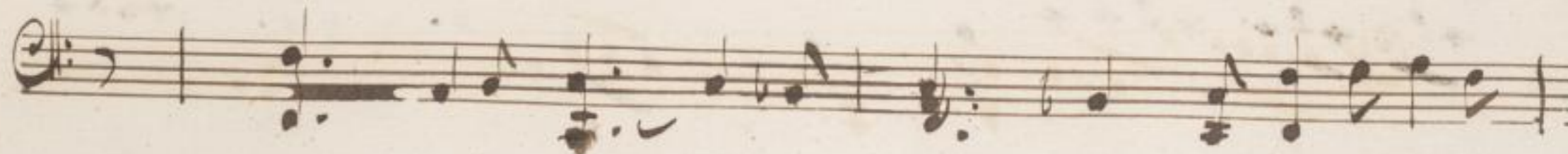
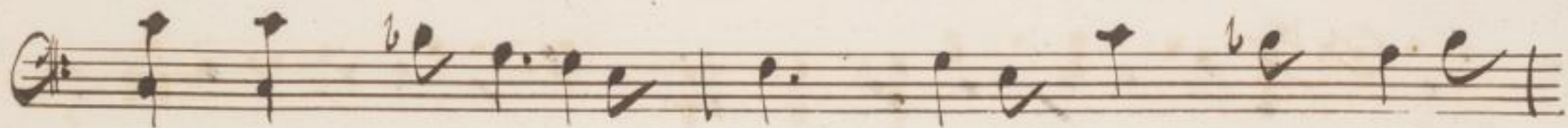
And: Staccato.



A page of handwritten musical notation on six staves. The notation is in a historical style, likely from the 18th or 19th century. The first four staves contain dense musical notation with various note values, rests, and bar lines. The fifth and sixth staves are mostly empty, with some faint markings and a few notes at the beginning, suggesting a section that has been crossed out or is a placeholder. The paper shows signs of age, including some staining and discoloration.

All^e





A page of handwritten musical notation on six staves. The notation is in brown ink on aged, slightly stained paper. The first five staves begin with a treble clef and a key signature of one flat (B-flat). The sixth staff begins with a bass clef and a key signature of one flat. The music consists of various note values, including quarter, eighth, and sixteenth notes, as well as rests and beams. The handwriting is clear and consistent throughout the page.

A handwritten musical score consisting of six staves. The notation is in brown ink on aged paper. The first two staves are in treble clef, and the last two are in bass clef. The middle two staves are in a different clef, possibly alto or soprano. The music features various note values, including eighth and sixteenth notes, and rests. There are some markings above the notes, possibly indicating fingerings or breath marks. The score is organized into measures by vertical bar lines.



Largo.

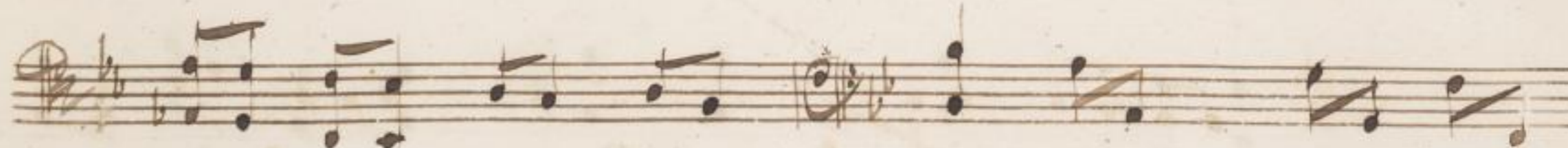


A handwritten musical score consisting of six staves. The notation is in brown ink on aged paper. The first five staves are in treble clef, and the sixth staff is in bass clef. The music features various rhythmic values, including eighth and sixteenth notes, and rests. There are some markings above the notes, possibly indicating fingerings or breath marks. The score is organized into measures by vertical bar lines.





All.^o



A page of handwritten musical notation on six staves. The notation is in brown ink on aged, yellowish paper. The first five staves contain complex, dense musical passages with many beamed notes and slurs. The sixth staff is simpler, featuring fewer notes and some rests. The paper shows signs of age, including some staining and discoloration.

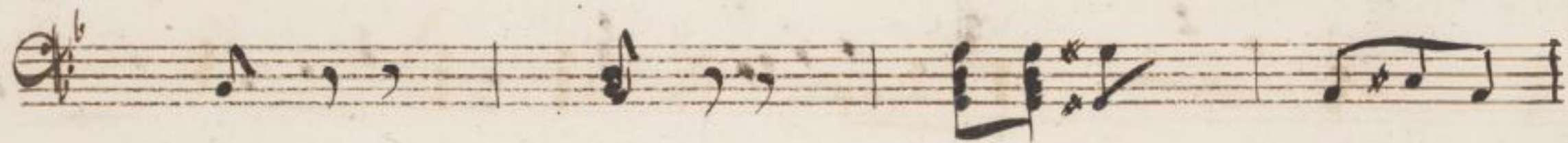
A page of handwritten musical notation on six staves. The notation is in brown ink on aged, slightly yellowed paper. The first staff is a treble clef with a key signature of one flat (B-flat) and a common time signature (C). It contains a melodic line with various note values, including eighth and sixteenth notes, and some accidentals. The second staff is a bass clef with a key signature of one flat and a common time signature, containing a bass line with similar note values. The third staff is a treble clef with a key signature of one flat and a common time signature, featuring a melodic line with some slurs and accents. The fourth staff is a bass clef with a key signature of one flat and a common time signature, containing a bass line with some slurs. The fifth staff is a treble clef with a key signature of one flat and a common time signature, containing a melodic line with some slurs. The sixth staff is a bass clef with a key signature of one flat and a common time signature, containing a bass line with some slurs. The notation is dense and detailed, typical of a manuscript score.

Ande

A handwritten musical score consisting of six staves. The notation is in brown ink on aged paper. The first staff begins with a treble clef, a key signature of one flat (B-flat), and a 3/8 time signature. The music features a variety of note values, including eighth and sixteenth notes, and rests. The second staff uses a different clef, possibly an alto or tenor clef, and continues the melodic line. The third staff uses a bass clef. The fourth and fifth staves use treble clefs, and the sixth staff uses a bass clef. The notation includes slurs, ties, and dynamic markings such as 'p' and 'f'. The overall style is characteristic of 18th or 19th-century manuscript notation.

A page of handwritten musical notation on six staves. The notation is in brown ink on aged, yellowish paper. The first staff begins with a treble clef and a key signature of one flat (B-flat). The music consists of various note values, including eighth and sixteenth notes, and rests. The second staff starts with a bass clef. The third staff returns to a treble clef. The fourth staff uses a bass clef. The fifth staff is in a treble clef, and the sixth staff is in a bass clef. The notation includes slurs, ties, and some accidentals. The overall style is characteristic of 18th or 19th-century manuscript notation.

A handwritten musical score consisting of six staves. The notation is in brown ink on aged, yellowish paper. The first staff begins with a treble clef and a 4/4 time signature. The second staff uses a bass clef. The third staff uses a treble clef. The fourth staff uses a bass clef. The fifth and sixth staves use treble clefs. The music features various note values, including quarter, eighth, and sixteenth notes, as well as rests and slurs. There are some corrections and erasures visible in the handwriting.

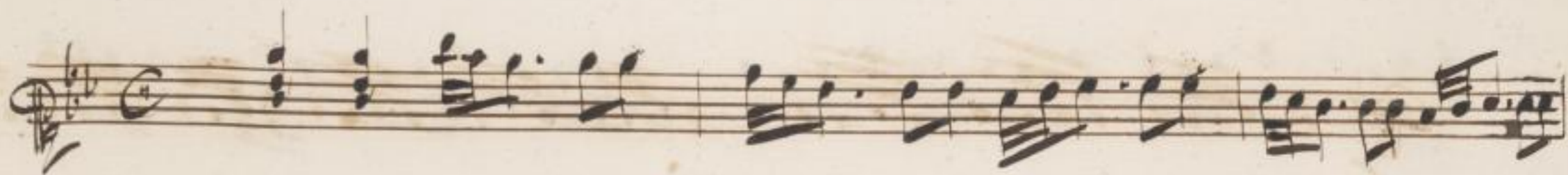




A handwritten musical score consisting of six staves. The notation is in a historical style, likely from the 18th or 19th century. The first staff features a treble clef and a key signature of one flat (B-flat). It contains a melodic line with eighth and sixteenth notes, some with slurs. The second staff has a bass clef and contains a bass line with chords and rests. The third staff returns to a treble clef and continues the melodic line. The fourth staff has a bass clef and contains a bass line with chords. The fifth staff has a treble clef and continues the melodic line. The sixth staff has a bass clef and contains a bass line with chords and rests. The manuscript shows signs of age, including some staining and ink bleed-through from the reverse side.

A handwritten musical score consisting of seven staves. The first two staves are in bass clef, and the last two are in treble clef. The notation includes various rhythmic values, including sixteenth and thirty-second notes, and rests. The paper shows signs of age, with some staining and discoloration.

All.

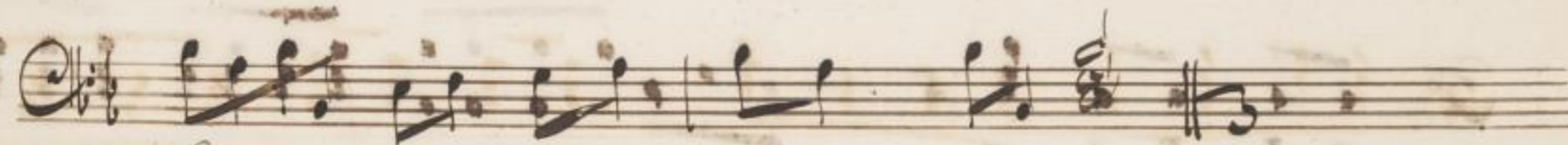
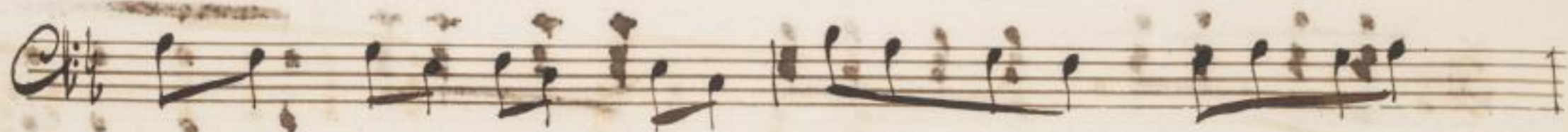


A page of handwritten musical notation on six staves. The notation is in a historical style, likely from the 18th or 19th century. The first staff is a treble clef with a key signature of one flat (B-flat) and a common time signature (C). It contains a melodic line with many beamed notes. The second staff is a bass clef with a key signature of one flat and a common time signature, containing a bass line with chords and some melodic fragments. The third staff is a treble clef with a key signature of one flat and a common time signature, containing a melodic line with some rests. The fourth staff is a bass clef with a key signature of one flat and a common time signature, containing a bass line with chords and some melodic fragments. The fifth staff is a treble clef with a key signature of one flat and a common time signature, containing a melodic line with many beamed notes. The sixth staff is a bass clef with a key signature of one flat and a common time signature, containing a bass line with chords and some melodic fragments. The paper shows signs of age, including some staining and discoloration.

A page of handwritten musical notation on six staves. The notation is in brown ink on aged, slightly yellowed paper. The first staff begins with a treble clef, a key signature of one flat (B-flat), and a 6/8 time signature. The music consists of six staves of notation, featuring various rhythmic values, including eighth and sixteenth notes, and rests. The handwriting is clear and consistent throughout the page.

A page of handwritten musical notation on six staves. The notation is in a historical style, likely from the 18th or 19th century. The first staff begins with a treble clef and a key signature of one flat (B-flat). The music consists of a series of notes, some with stems and beams, and some with flags. The second staff starts with a bass clef and a key signature of one flat. It features a series of notes, some with stems and beams, and some with flags. The third staff begins with a treble clef and a key signature of one flat. The fourth staff starts with a bass clef and a key signature of one flat. The fifth staff begins with a treble clef and a key signature of one flat. The sixth staff starts with a bass clef and a key signature of one flat. The notation is dense and covers most of the page.

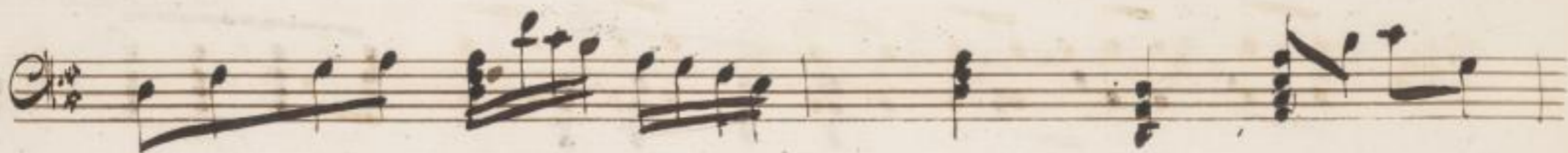
A page of handwritten musical notation on six staves. The notation is in a historical style, likely from the 18th or 19th century. The first staff begins with a treble clef and a key signature of one flat (B-flat). The music consists of various rhythmic patterns, including eighth and sixteenth notes, and rests. The second and fourth staves use a different clef, possibly an alto or bass clef, and feature more complex rhythmic structures with many beamed notes. The third and fifth staves return to a treble clef. The sixth staff uses the same clef as the second and fourth staves. The paper shows signs of age, with some staining and discoloration.



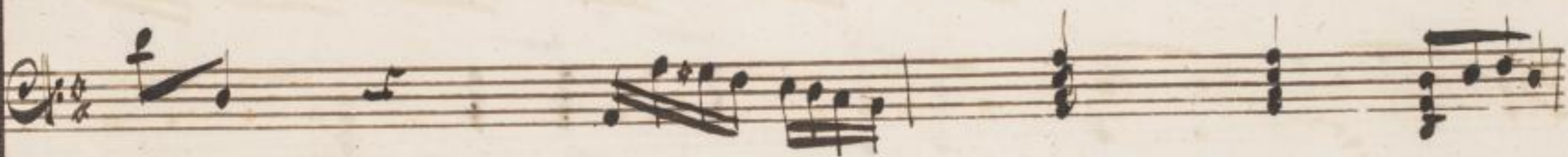
Allé



A page of handwritten musical notation on six staves. The notation is in brown ink on aged, yellowed paper. The first staff begins with a treble clef and a key signature of one sharp (F#). The second staff begins with a bass clef and a key signature of one sharp. The third staff begins with a treble clef and a key signature of one sharp. The fourth staff begins with a bass clef and a key signature of one sharp. The fifth staff begins with a treble clef and a key signature of one sharp. The sixth staff begins with a bass clef and a key signature of one sharp. The notation includes various note values, rests, and bar lines. There are some small handwritten annotations above the third staff, possibly '4, 5, 6'. The page number '87' is written at the bottom center.

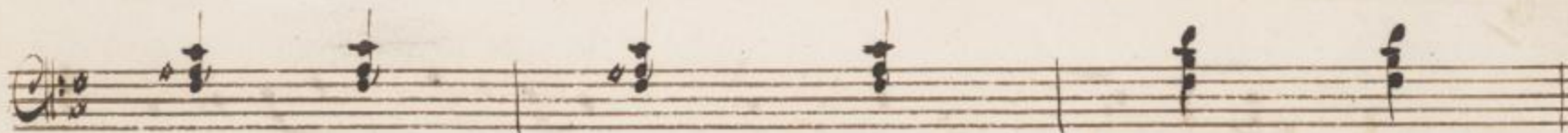


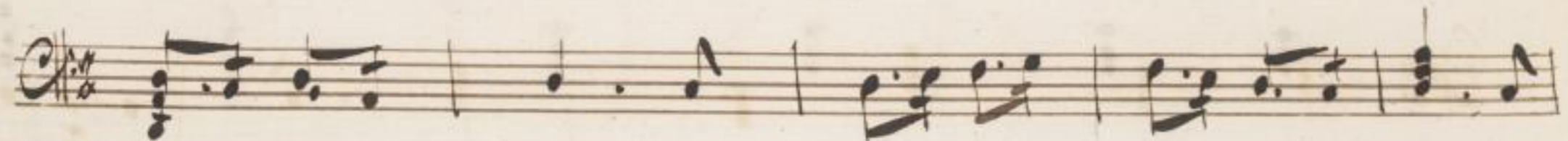
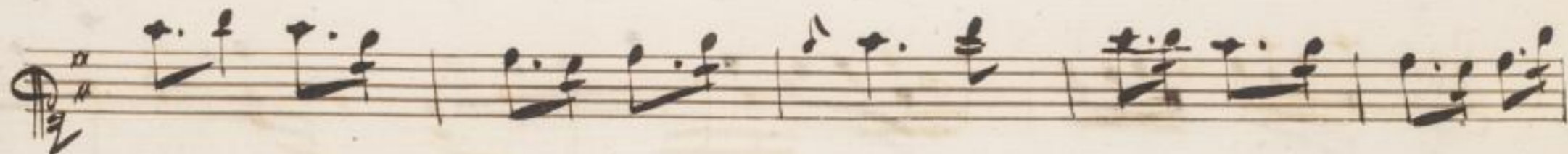
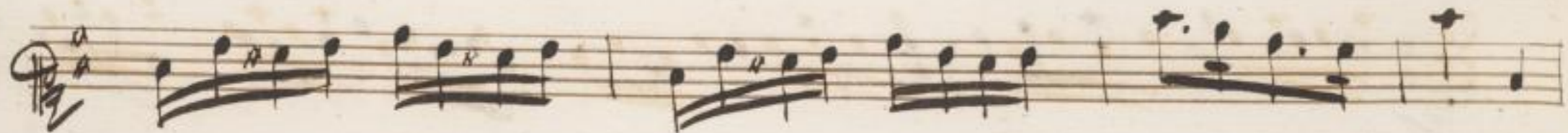
A page of handwritten musical notation on six staves. The notation is in brown ink on aged, slightly stained paper. The first staff begins with a treble clef and a key signature of one sharp (F#). The second staff begins with a bass clef. The third staff begins with a treble clef. The fourth staff begins with a bass clef. The fifth staff begins with a treble clef. The sixth staff begins with a bass clef. The music consists of various rhythmic patterns, including eighth and sixteenth notes, and rests. The notation is dense and characteristic of 18th or 19th-century manuscript notation.

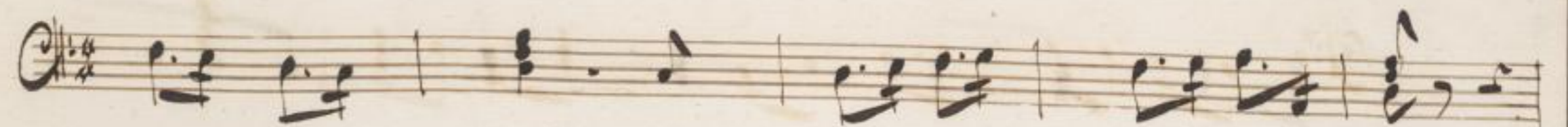
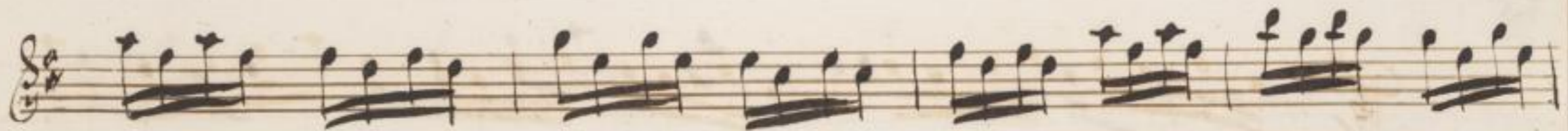


A page of handwritten musical notation on six staves. The notation is in a historical style, likely from the 18th or 19th century. The first staff uses a treble clef and a 2/4 time signature. The second staff uses an alto clef. The third staff uses a soprano clef. The fourth staff uses an alto clef. The fifth staff uses a bass clef. The sixth staff uses a bass clef. The music consists of various rhythmic patterns, including eighth and sixteenth notes, and rests. There are some water stains on the page, particularly in the middle and right sections.

Handwritten musical score for six staves. The notation includes treble and bass clefs, a key signature of one sharp (F#), and a time signature of 2/4. The score consists of six staves of music. The fifth staff begins with the instruction *And: Staccato.* The notation includes various note values, rests, and articulation marks.

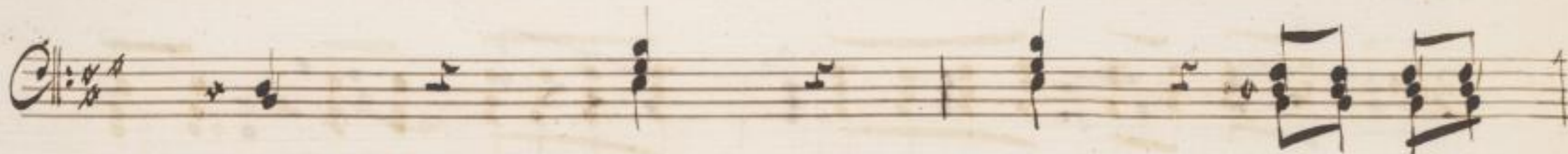






A page of handwritten musical notation on six staves. The notation is in a historical style, likely from the 18th or 19th century. The first staff begins with a treble clef and a key signature of one sharp (F#). The music consists of various note values, including minims, crotchets, and quavers, often beamed together. There are also some rests and dynamic markings. The paper shows signs of age, with some staining and discoloration.







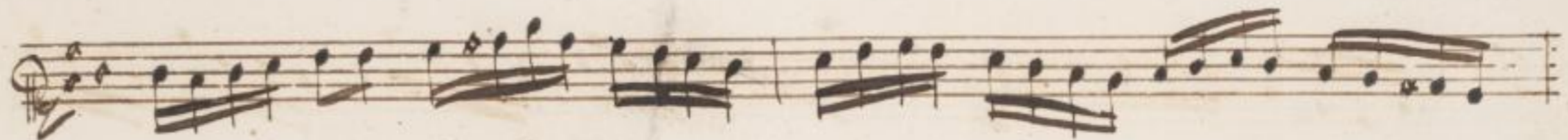
A page of handwritten musical notation on six staves. The notation is in brown ink on aged, slightly yellowed paper. The first staff begins with a treble clef and a key signature of two sharps (F# and C#). The second staff begins with a bass clef and the same key signature. The third staff begins with a bass clef and a key signature of one sharp (F#). The fourth staff begins with a bass clef and a key signature of one sharp (F#). The fifth and sixth staves begin with a bass clef and a key signature of one sharp (F#). The music consists of various note values, rests, and some complex rhythmic patterns. The handwriting is clear and legible.

Handwritten musical score on page 104, featuring six systems of staves. The notation includes treble and bass clefs, various note values (quarter, eighth, and sixteenth notes), rests, and accidentals (sharps and naturals). The music is arranged in two parts per system, with the upper part generally in treble clef and the lower part in bass clef. The paper shows signs of age, including some staining and foxing.

A page of handwritten musical notation on six staves. The notation is in brown ink on aged paper. The first staff begins with a treble clef, a key signature of two sharps (F# and C#), and a 2/4 time signature. The music consists of a series of eighth and sixteenth notes, some with slurs and accents. The second staff uses a different clef, possibly an alto or tenor clef, and features block chords and some melodic lines. The third staff returns to a treble clef and contains more complex rhythmic patterns with slurs and ties. The fourth staff continues with similar rhythmic complexity. The fifth staff shows a melodic line with various note values and slurs. The sixth staff features block chords and some melodic fragments. The page shows signs of age, including some staining and fading.

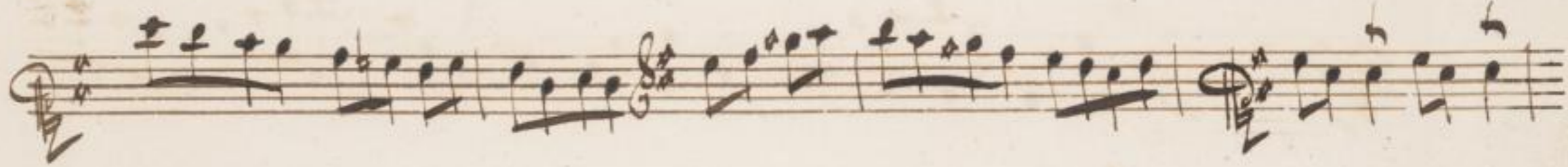
Handwritten musical score on page 103, featuring six staves of music. The notation is in G major (one sharp) and 4/4 time. The first staff begins with a treble clef and a '1' above the first measure. The second staff uses a bass clef. The third staff returns to a treble clef. The fourth staff uses a bass clef. The fifth staff uses a treble clef. The sixth staff uses a bass clef. The music consists of various rhythmic patterns, including eighth and sixteenth notes, and rests.

A handwritten musical score consisting of six staves. The notation is in brown ink on aged, yellowish paper. The first staff is in treble clef with a key signature of one sharp (F#) and a 4/4 time signature. The second staff is in bass clef with a key signature of one sharp (F#) and a 4/4 time signature. The third staff is in treble clef with a key signature of one sharp (F#) and a 4/4 time signature. The fourth staff is in bass clef with a key signature of one sharp (F#) and a 4/4 time signature. The fifth staff is in treble clef with a key signature of one sharp (F#) and a 4/4 time signature. The sixth staff is in bass clef with a key signature of one sharp (F#) and a 4/4 time signature. The music features various rhythmic patterns, including eighth and sixteenth notes, and rests.



Al:

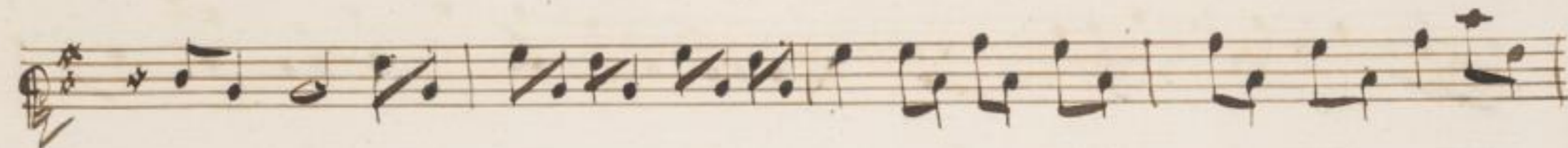
A handwritten musical score consisting of six staves. The notation is in a historical style, likely from the 18th or 19th century. The first staff begins with a treble clef, a key signature of one sharp (F#), and a common time signature (C). The music is written in a single melodic line. The second staff continues the melody. The third staff features a more complex texture with multiple voices or instruments, including some sixteenth-note passages. The fourth staff shows a continuation of the melodic line with some chordal accompaniment. The fifth staff includes a change in clef to a bass clef and continues the melodic development. The sixth staff concludes the piece with a final melodic line and some chordal accompaniment. The paper is aged and shows some staining.



A page of handwritten musical notation on six staves. The notation is in a historical style, likely from the 18th or 19th century. The first staff begins with a treble clef and a key signature of two sharps (F# and C#). The subsequent staves alternate between treble and alto clefs. The music consists of various note values, including minims, crotchets, and quavers, with some complex rhythmic patterns. There are several instances of double bar lines and repeat signs. The paper shows signs of age, with some staining and discoloration.

A page of handwritten musical notation on six staves. The notation is in brown ink on aged paper. The first staff begins with a treble clef and a key signature of one sharp (F#). The second and fourth staves begin with a bass clef and a key signature of one sharp (F#). The third and fifth staves begin with a treble clef and a key signature of one sharp (F#). The sixth staff begins with a bass clef and a key signature of one sharp (F#). The music consists of various note values, rests, and some complex rhythmic figures. There are some ink smudges and a small circled '3' in the third staff.



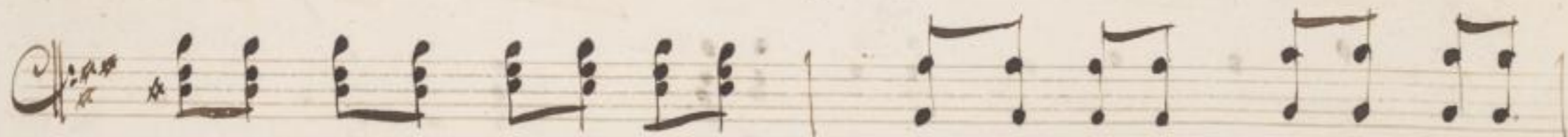
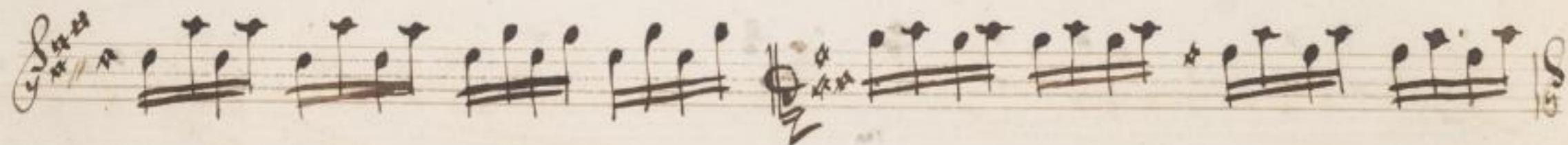
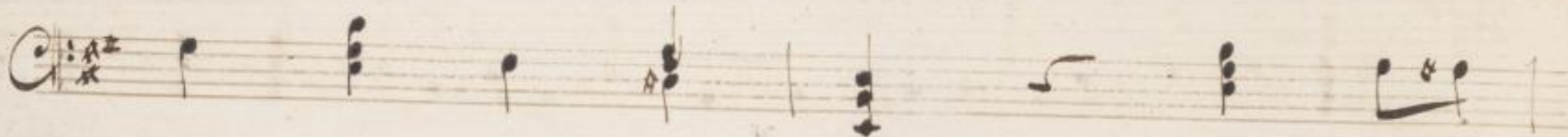
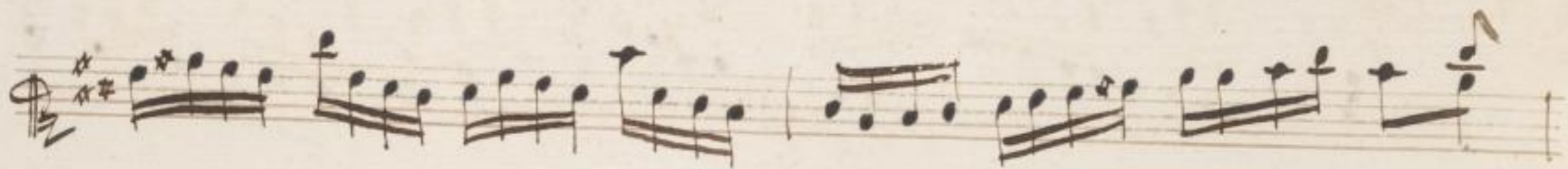


A page of handwritten musical notation on six staves. The notation is in a historical style, likely from the 18th or 19th century. The first five staves begin with a treble clef and a key signature of one sharp (F#). The sixth staff begins with a different clef, possibly an alto or bass clef, and the same key signature. The music consists of various note values, including minims, crotchets, and quavers, along with rests and bar lines. The paper shows signs of age, with some staining and discoloration.

A page of handwritten musical notation on six staves. The notation is in a historical style, likely from the 18th or 19th century. The first two staves feature a treble clef and a key signature of one sharp (F#). The third staff begins with a bass clef and a key signature of one sharp (F#), with the word "Allegro" written above it. The remaining three staves continue the composition with various rhythmic patterns and melodic lines. The paper shows signs of age, including some staining and foxing.

A handwritten musical score consisting of six staves. The notation is in brown ink on aged, yellowish paper. The first staff uses a treble clef and a key signature of two sharps (F# and C#). The second staff uses a bass clef. The third staff uses a treble clef. The fourth staff uses a bass clef. The fifth staff uses a treble clef. The sixth staff uses a bass clef. The music features various rhythmic values, including eighth and sixteenth notes, and rests. There are some handwritten annotations and corrections throughout the score.

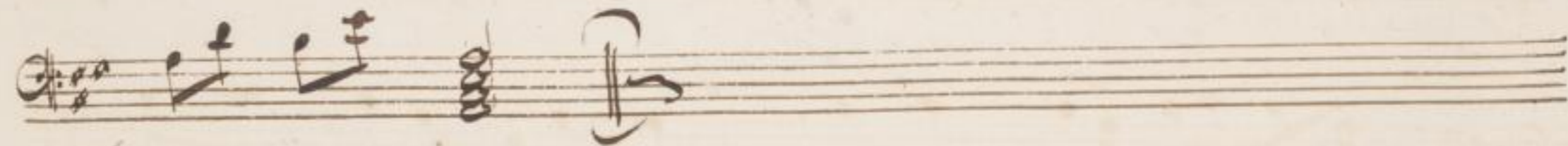
A handwritten musical score consisting of six staves. The notation is in brown ink on aged, yellowish paper. The first staff begins with a treble clef, a key signature of two sharps (F# and C#), and a 3/4 time signature. The music features a variety of note values, including eighth and sixteenth notes, and rests. The second staff starts with a bass clef and a key signature of one sharp (F#). The subsequent staves continue the musical composition with various clefs and rhythmic patterns. The handwriting is clear and consistent throughout the page.



A handwritten musical score consisting of six staves. The notation is in a historical style, likely from the 18th or 19th century. The first staff is a treble clef with a key signature of two sharps (F# and C#) and a common time signature (C). It contains a complex melodic line with many beamed notes and slurs. The second staff is an alto clef with a key signature of two sharps and a common time signature, featuring a simpler, more rhythmic line with some chords. The third staff is a treble clef with a key signature of two sharps and a common time signature, continuing the complex melodic line. The fourth staff is an alto clef with a key signature of two sharps and a common time signature, with a rhythmic line similar to the second staff. The fifth staff is a bass clef with a key signature of two sharps and a common time signature, featuring a melodic line with several triplet markings (indicated by a '3' above a bracket). The sixth staff is an alto clef with a key signature of two sharps and a common time signature, with a rhythmic line similar to the second and fourth staves. The paper shows signs of age, including some staining and foxing.

117

A page of handwritten musical notation on six staves. The notation is in brown ink on aged paper. Each staff begins with a treble clef, a key signature of one sharp (F#), and a time signature of 2/4. The music consists of various rhythmic values, including eighth and sixteenth notes, and rests. Some notes are beamed together, and there are several slurs across the staves. The handwriting is clear and consistent throughout the page.



Follia: pri:





Follia. Sec:

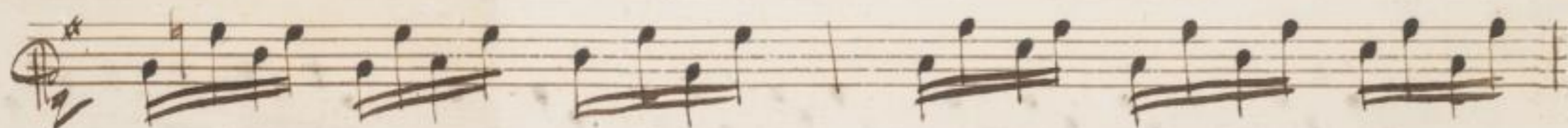
The image shows a page of handwritten musical notation for a piece titled "Follia. Sec:". The music is written on six staves, each beginning with a treble clef and a key signature of one sharp (F#). The notation is dense and features many beamed notes, characteristic of a virtuosic or technically demanding piece. The handwriting is in dark ink on aged, slightly yellowed paper. The first staff starts with a treble clef and a sharp sign. The second staff begins with a treble clef, a sharp sign, and a double bar line. The third staff starts with a treble clef and a sharp sign. The fourth staff begins with a treble clef and a sharp sign. The fifth staff starts with a treble clef and a sharp sign. The sixth staff begins with a treble clef and a sharp sign. The music consists of six staves of handwritten notation, each starting with a treble clef and a sharp sign. The notation is dense and features many beamed notes, characteristic of a virtuosic or technically demanding piece.

Handwritten musical score for the first system, consisting of four staves. The first two staves are in treble clef with a key signature of one sharp (F#) and a 3/4 time signature. The third and fourth staves are in bass clef with a key signature of one flat (Bb) and a 3/4 time signature. The notation includes various note values, rests, and bar lines.

Follia tortea.

Handwritten musical score for the second system, consisting of two staves. Both staves are in treble clef with a key signature of one sharp (F#) and a 3/4 time signature. The notation includes various note values, rests, and bar lines.

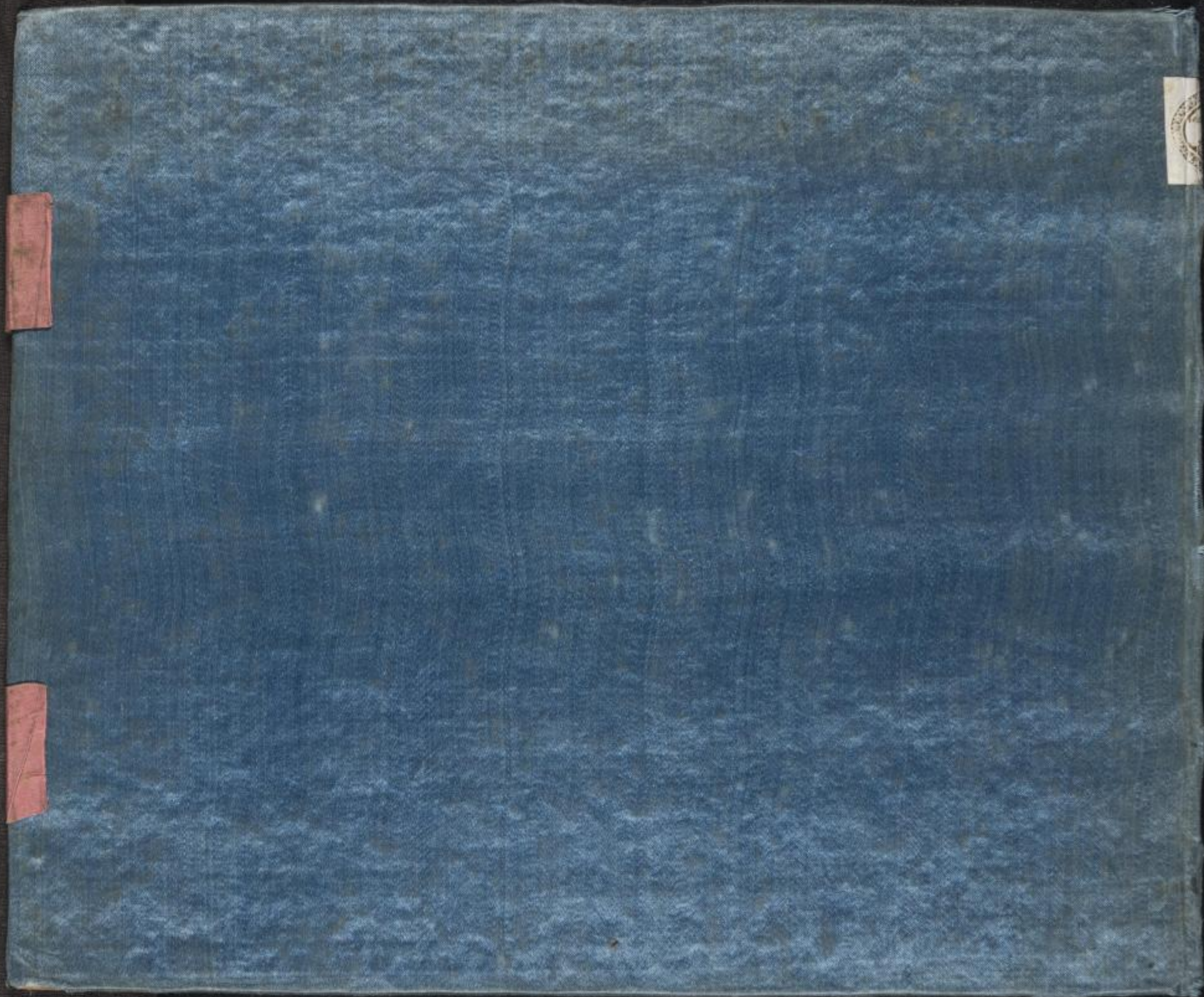
A page of handwritten musical notation on six staves. The notation is in brown ink on aged, slightly yellowed paper. Each staff begins with a treble clef and a key signature of one sharp (F#). The music consists of a series of eighth and sixteenth notes, often beamed together in groups. The first staff has a '4' written above it, and the second staff has a '4' written below it. The notation is dense and rhythmic, typical of a keyboard or lute piece. The page number '123' is centered at the bottom.



2722

T 1

Mis. 2422
T 1

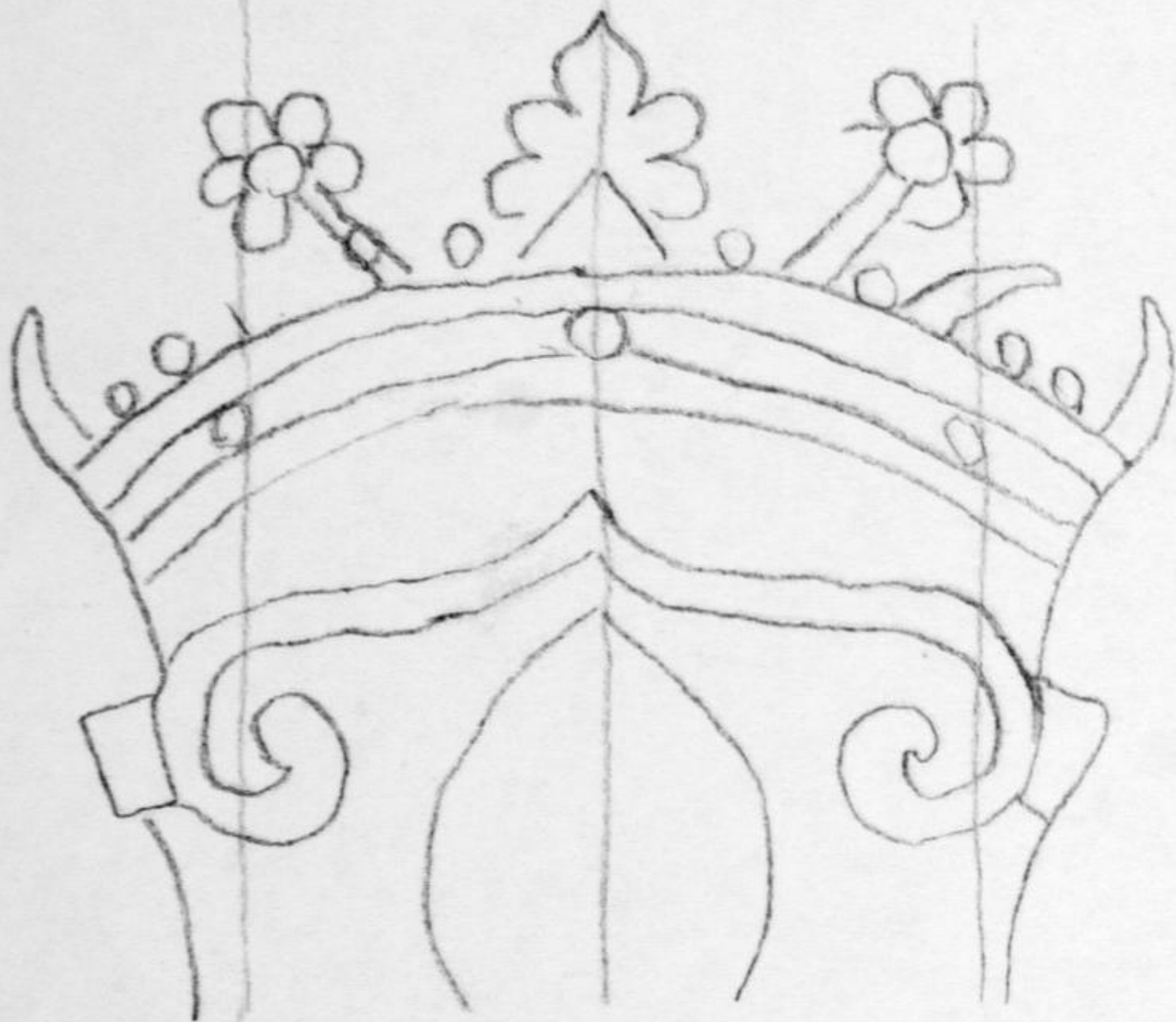


Small white label with faint markings in the top right corner.

Proccata
de Studia
de
L. Fischer.

D-DI Mus. 2722-T-1

p. 33/34



D-31 Mus. 2722-T-1 p. 19/20

