

HAEKEL-VORLAGEN

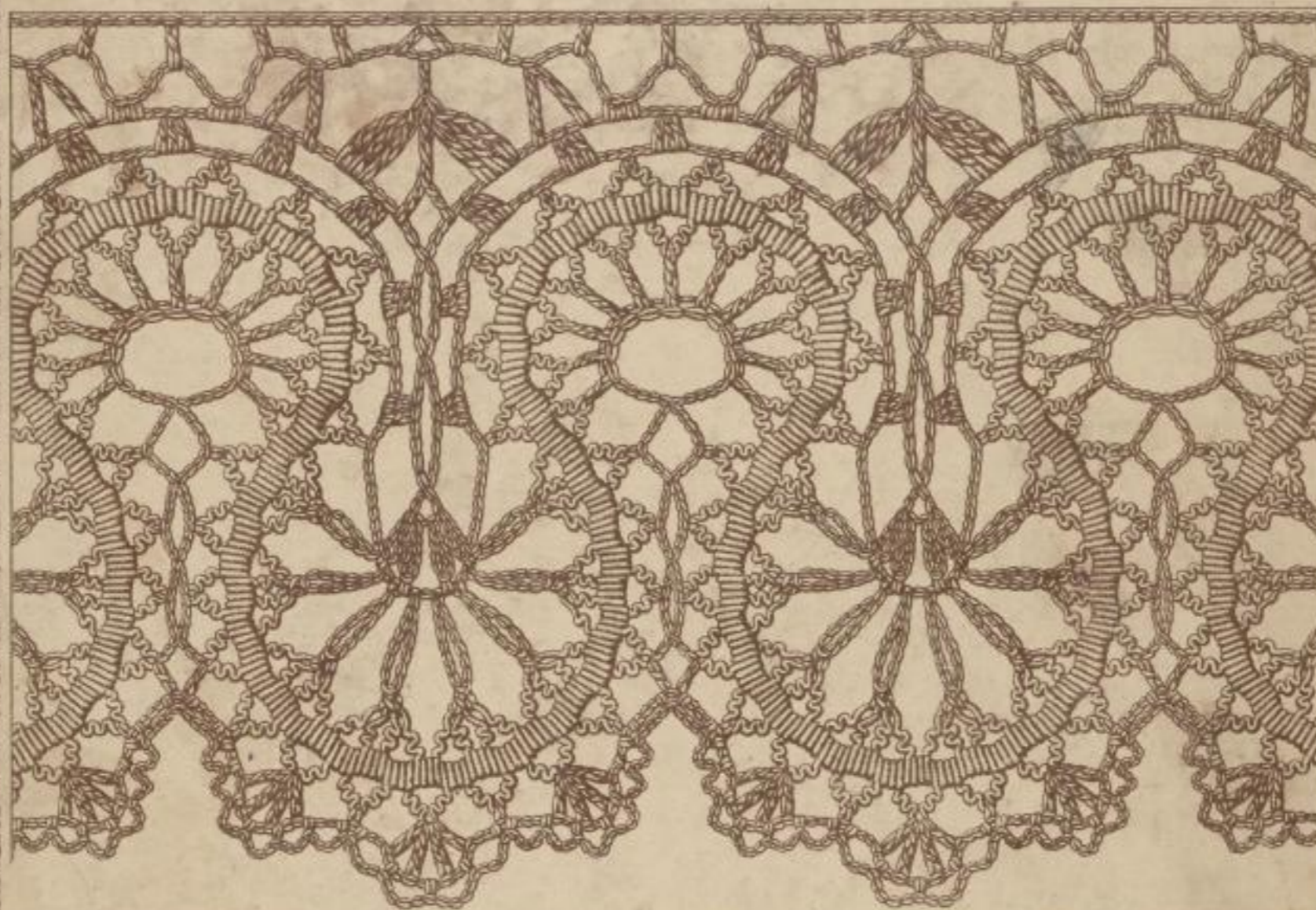
arrangirt von

FRIEDRICH FISCHBACH.

Serie II (12 Tafeln) Mk. 3.—

Selbstverlag.

Commissionär: L. A. KITTLER in Leipzig.



ZS
6250
F528
-2



9/25 6250 F528-2



92044920

**WESTSÄCHSISCHE HOCHSCHULE
ZWICKAU (FH)**
Hochschulbibliothek
Zweigbibliothek Reichenbach
Klinkhardtstraße 30
08468 Reichenbach



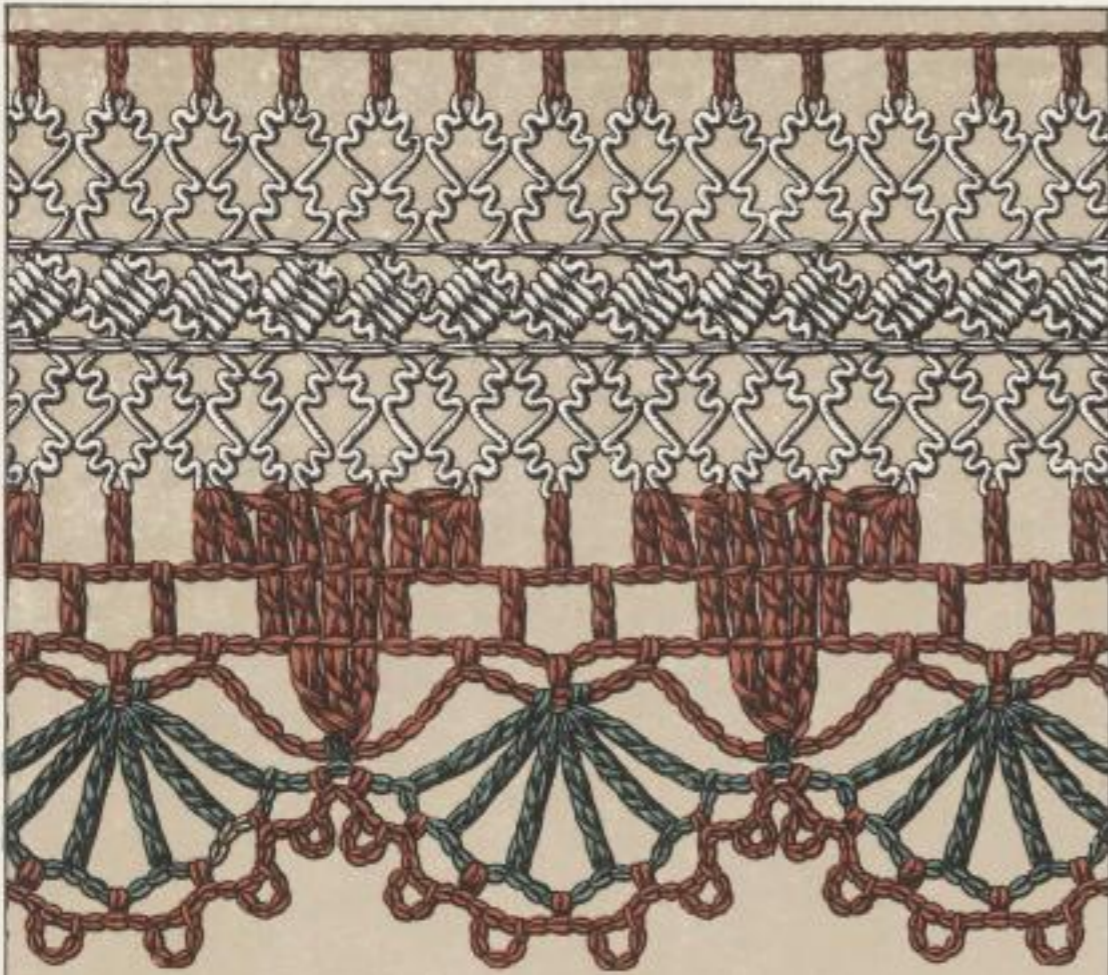
SLUB

Wir führen Wissen.

<http://digital.slub-dresden.de/id446256447/2>



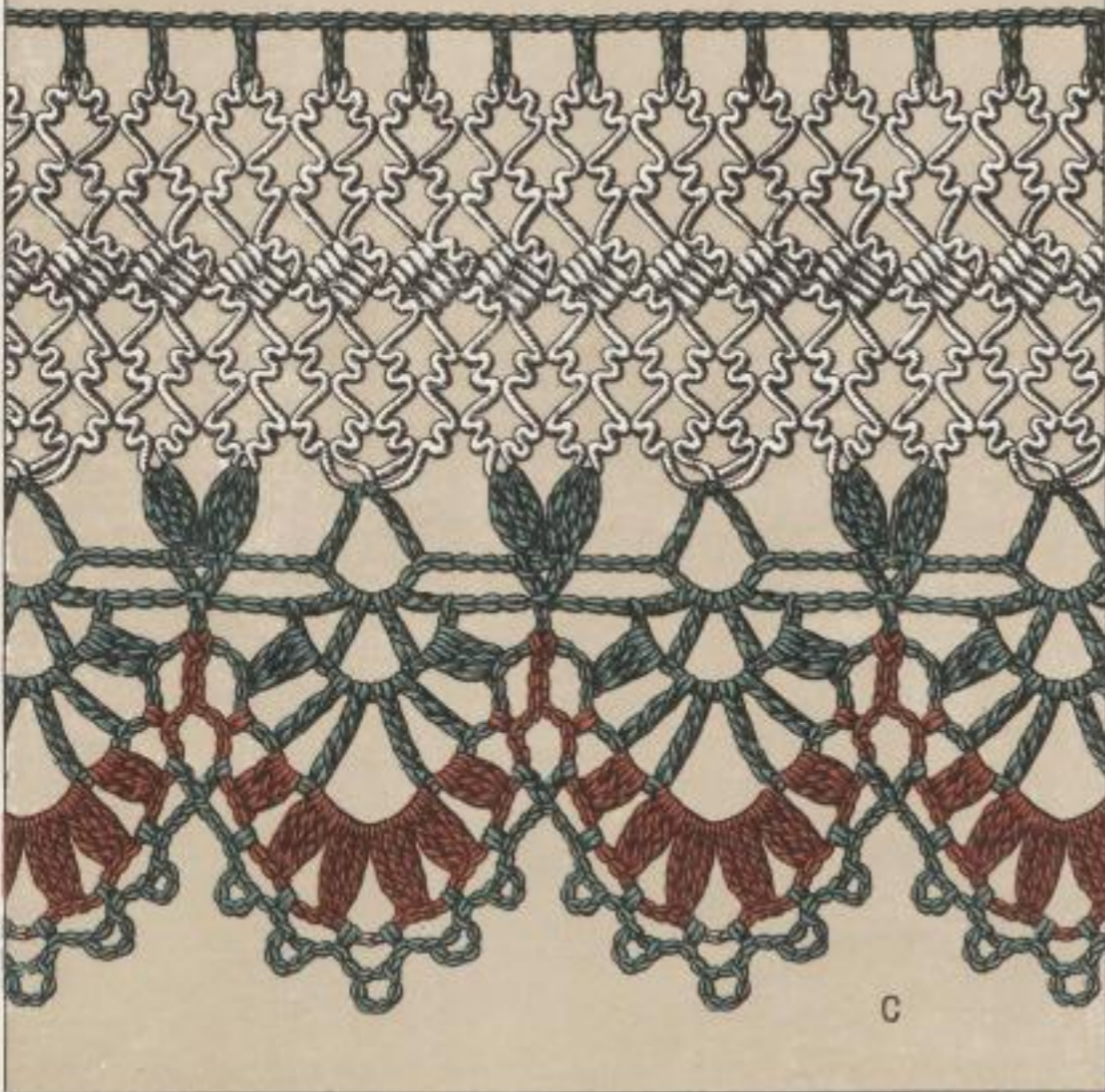
WestSächsische Hochschule Zwickau
Hochschulbibliothek



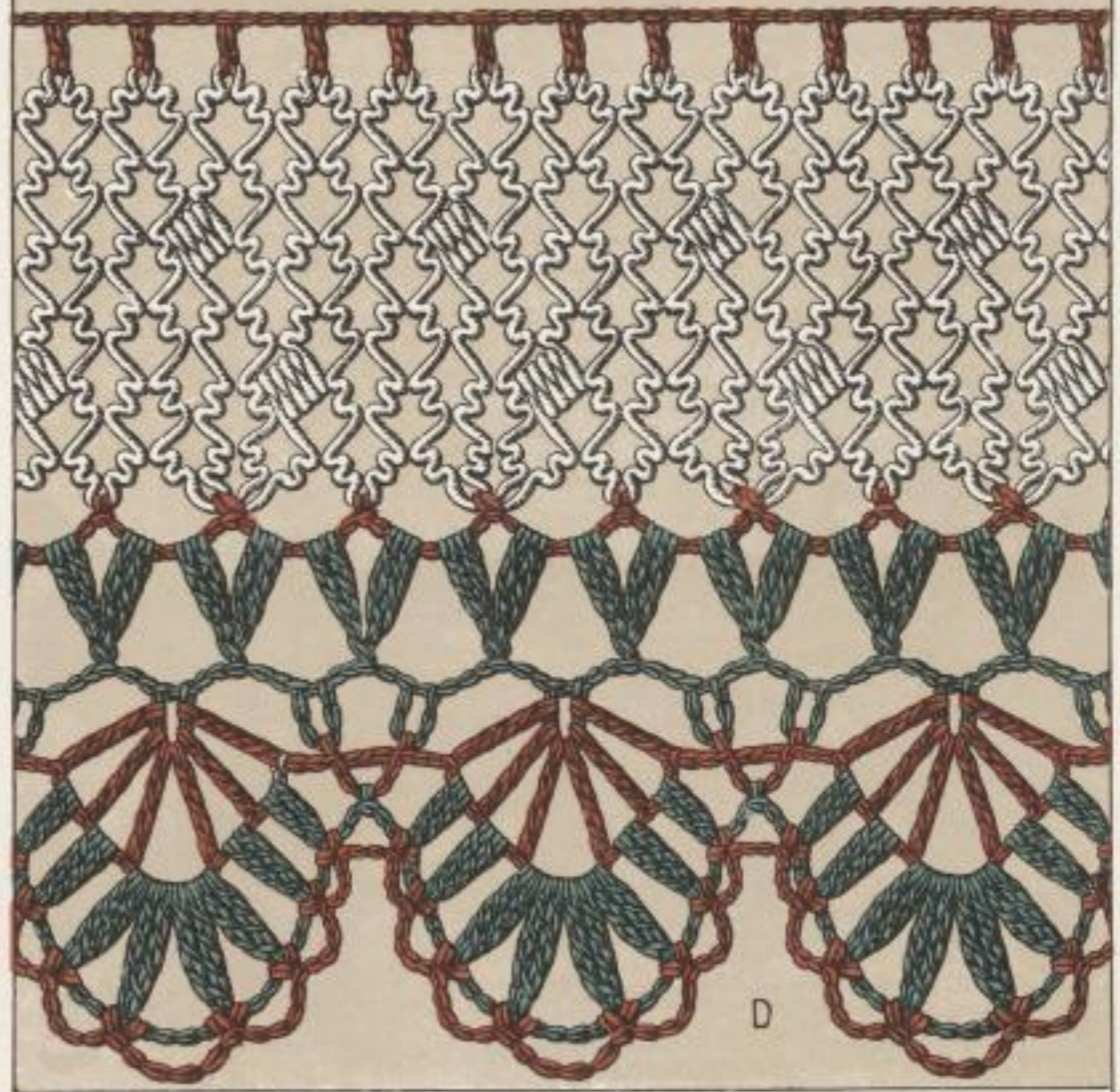
A



B



C

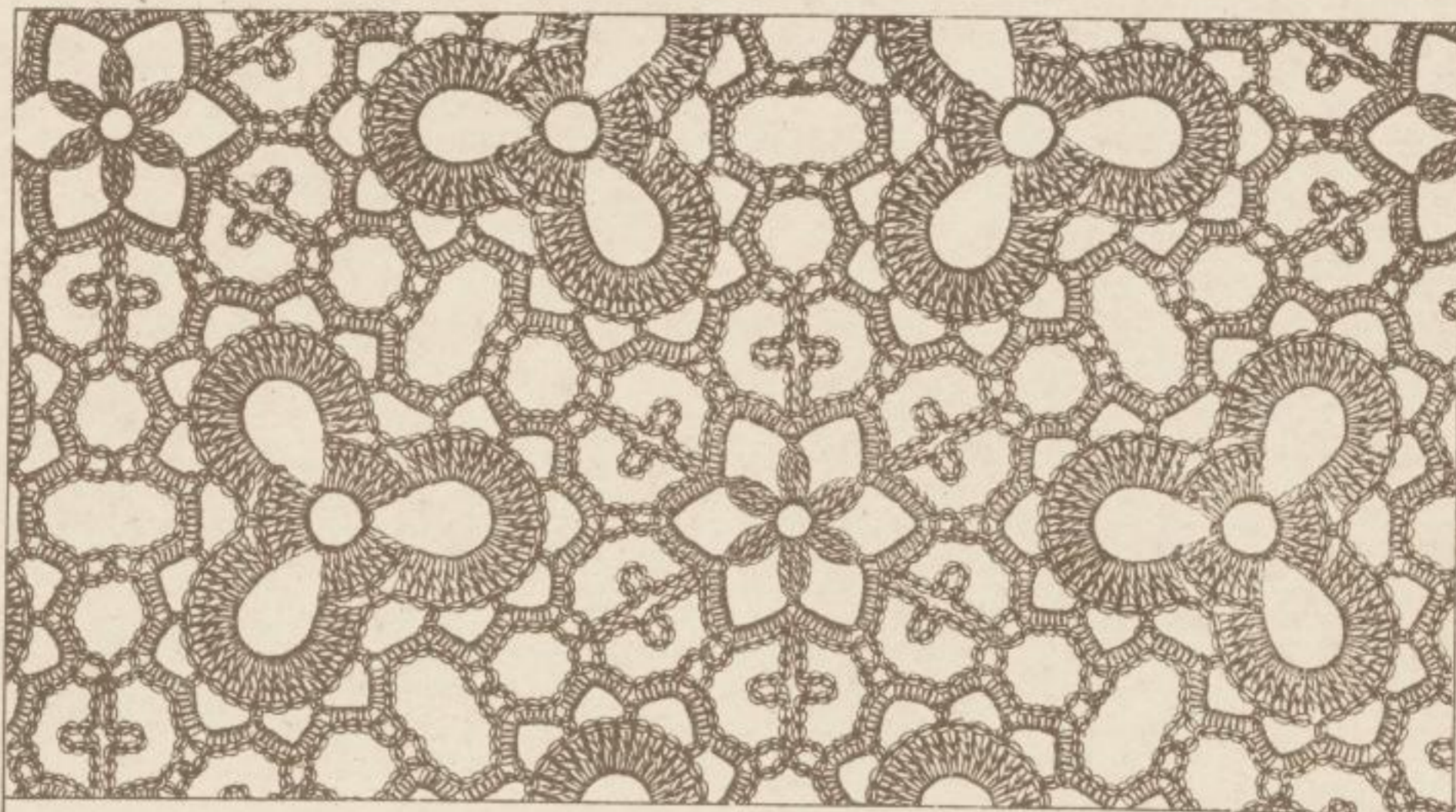


D

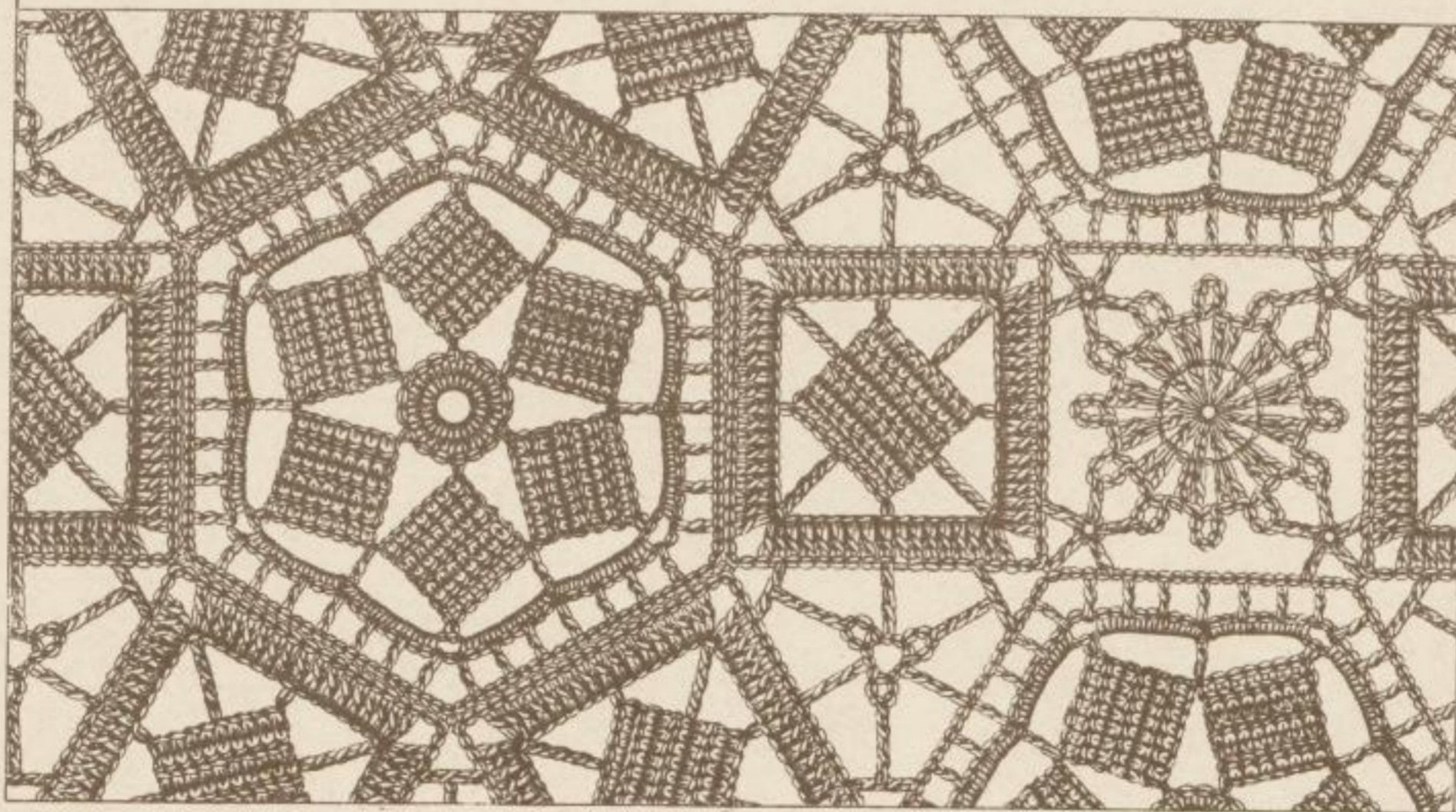
Druck von Gutermann & Schmidt, St.Gallen

Nachdruck verboten





A



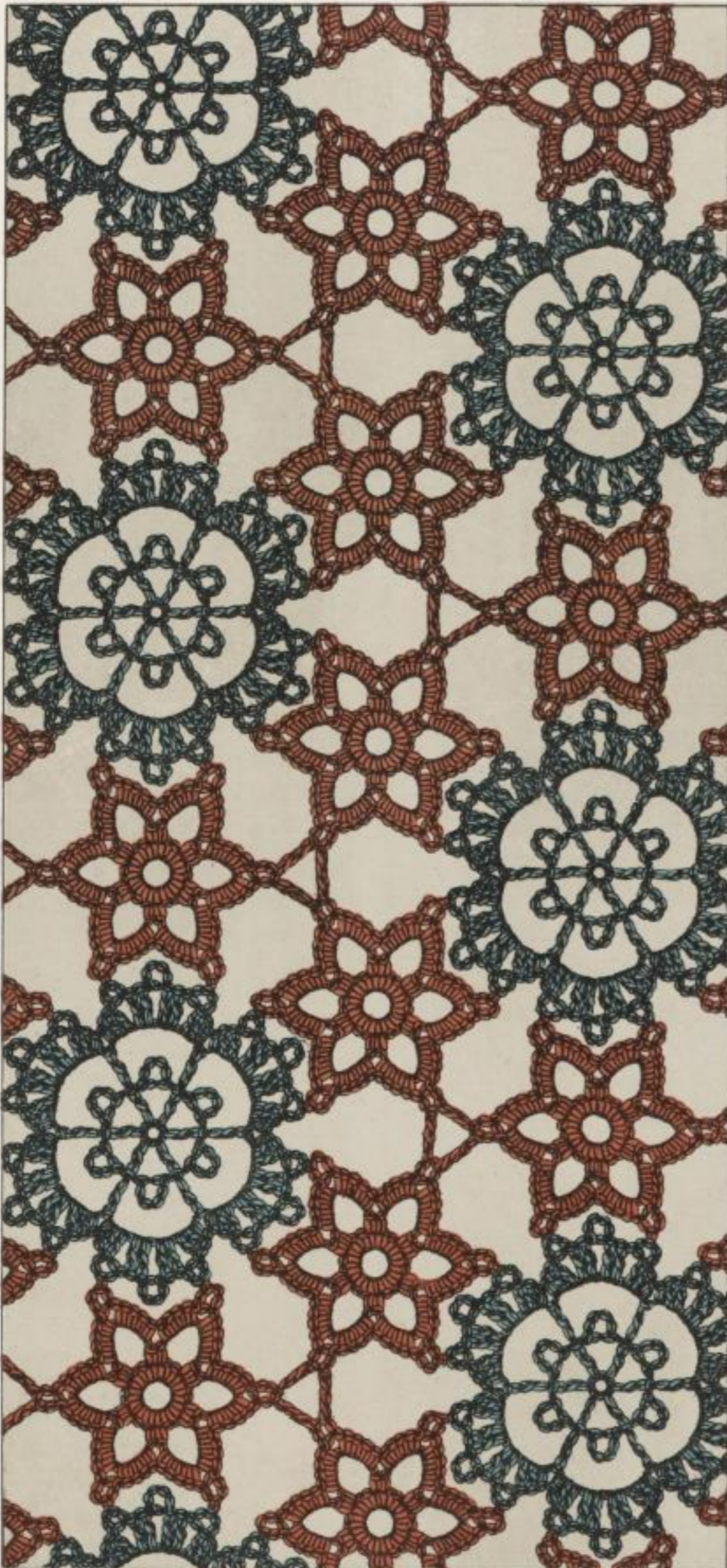
B

Original-Muster der Zwirnerei & Nähfadenfabrik

Kreis Schwaben **GÖGGINGEN** ir. Bayern

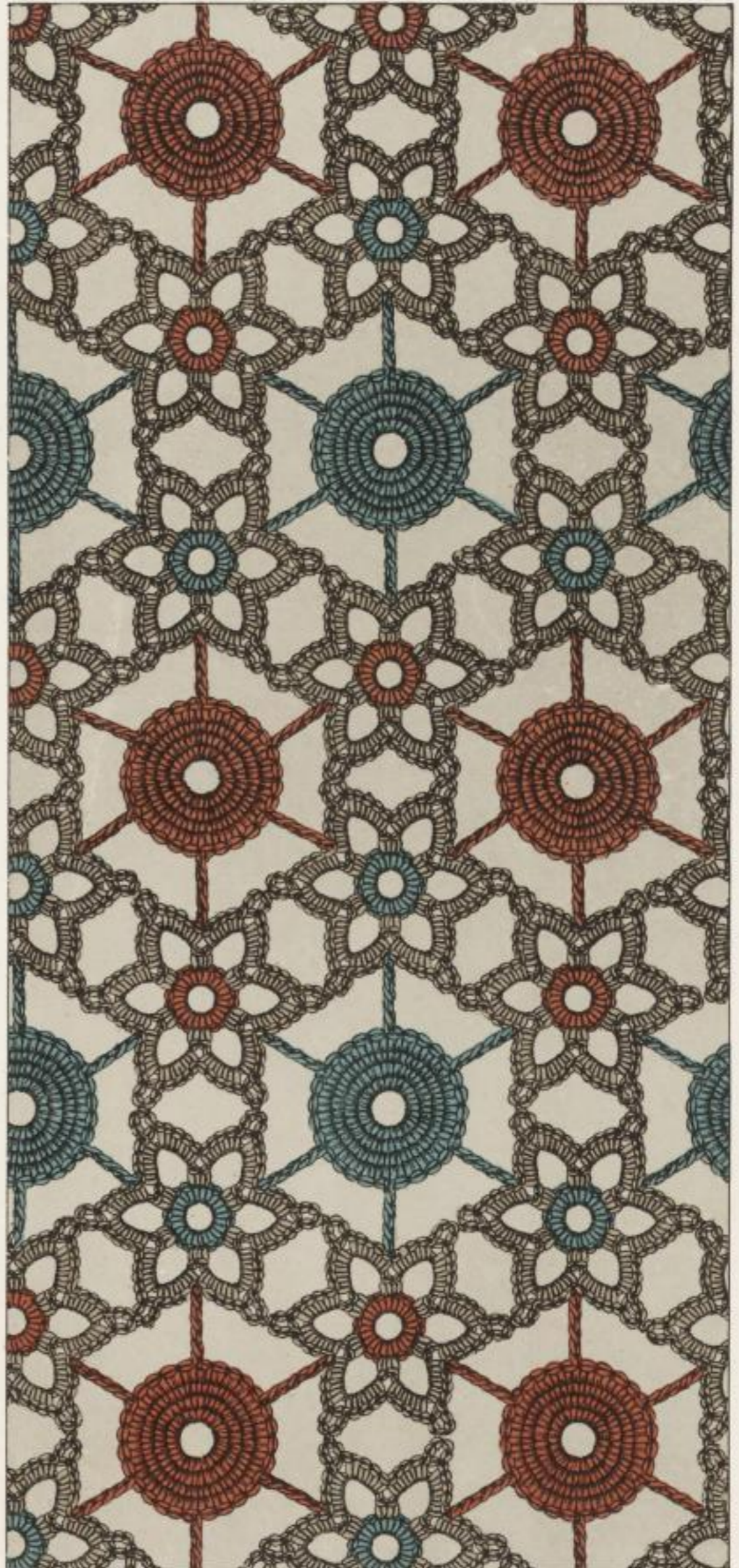
Arrangirt von Fr. Fischbach.

Taf. 3



Druck von Gutermann & Schmidt, St.Gallen

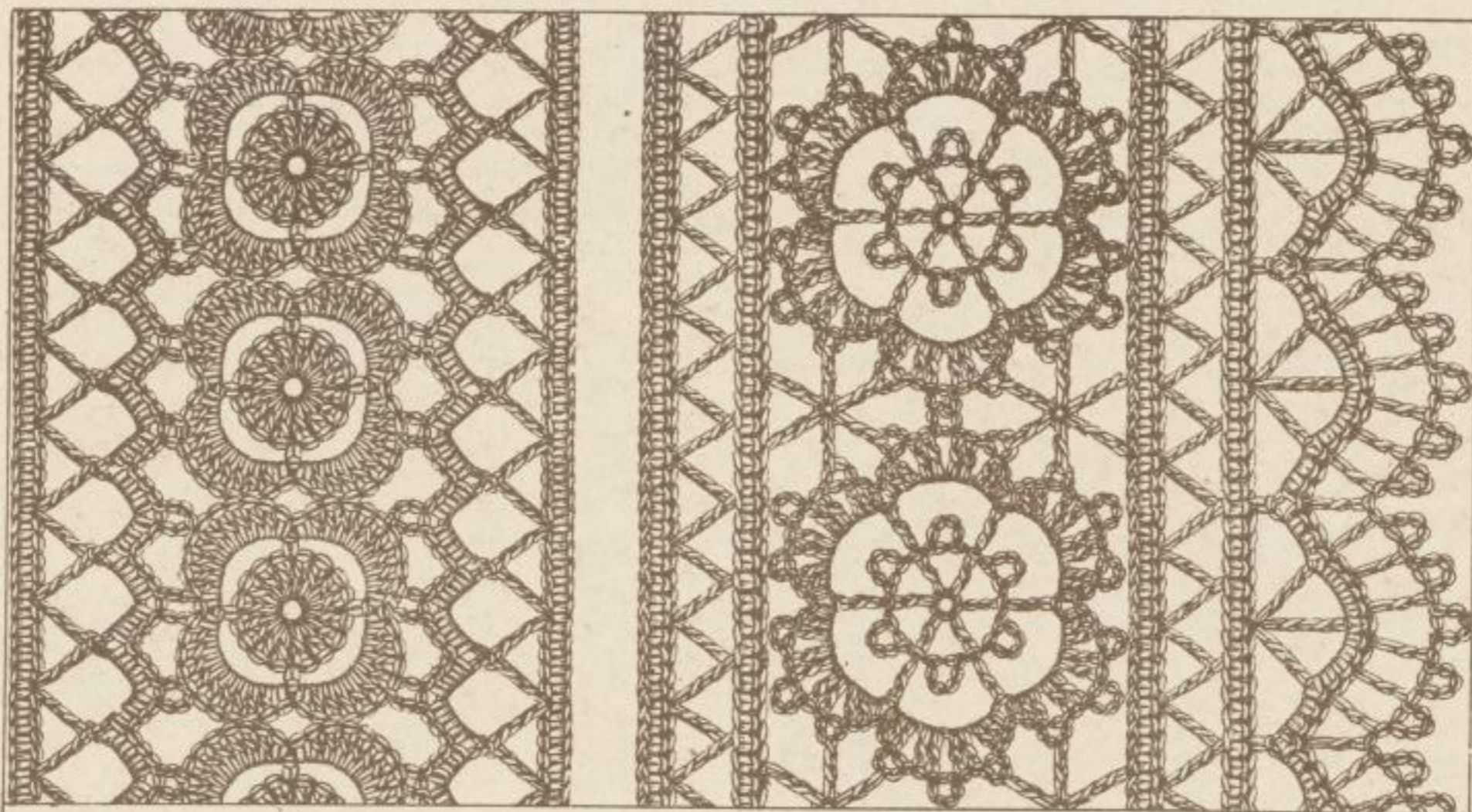
A



B

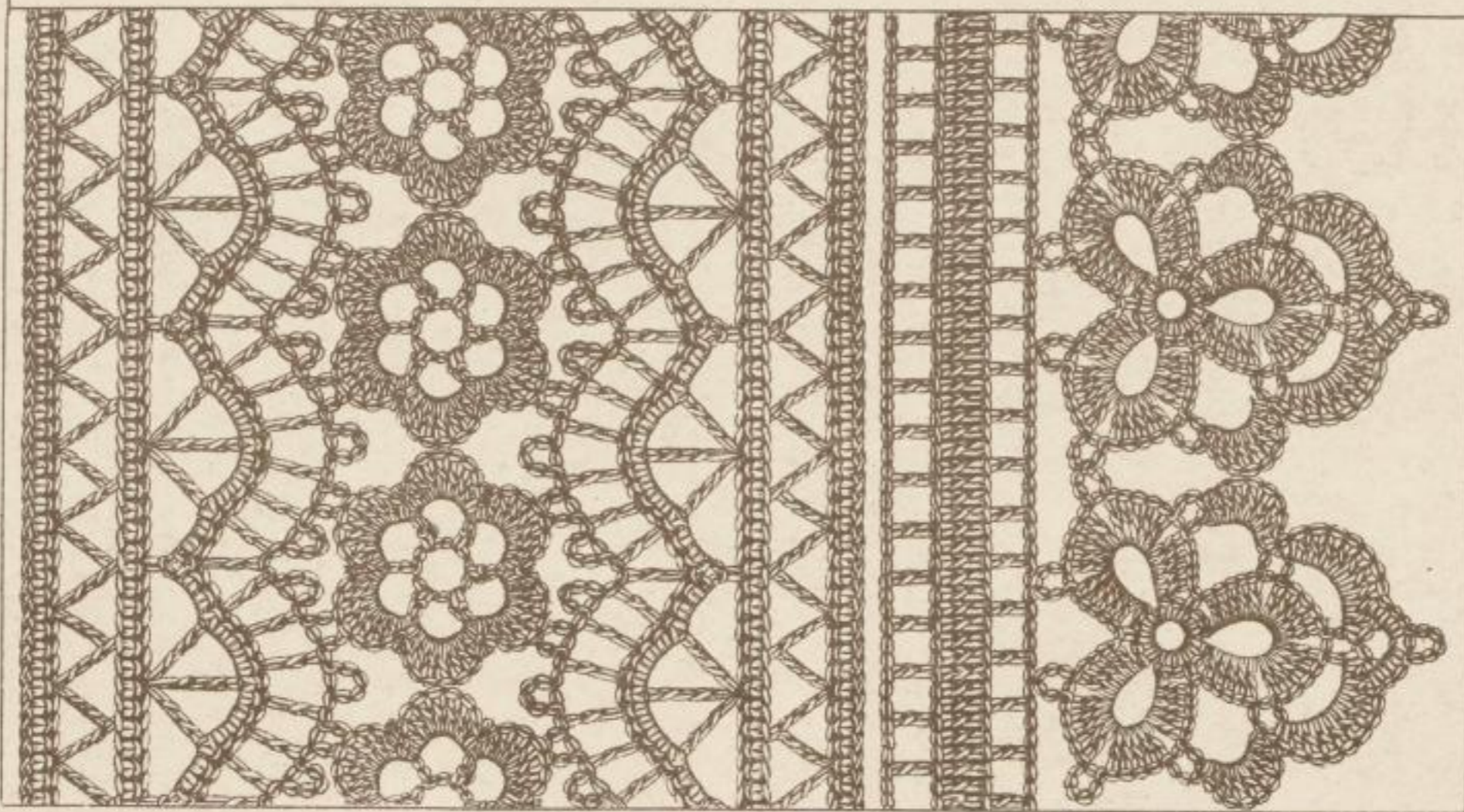
Nachdruck verboten





A

B



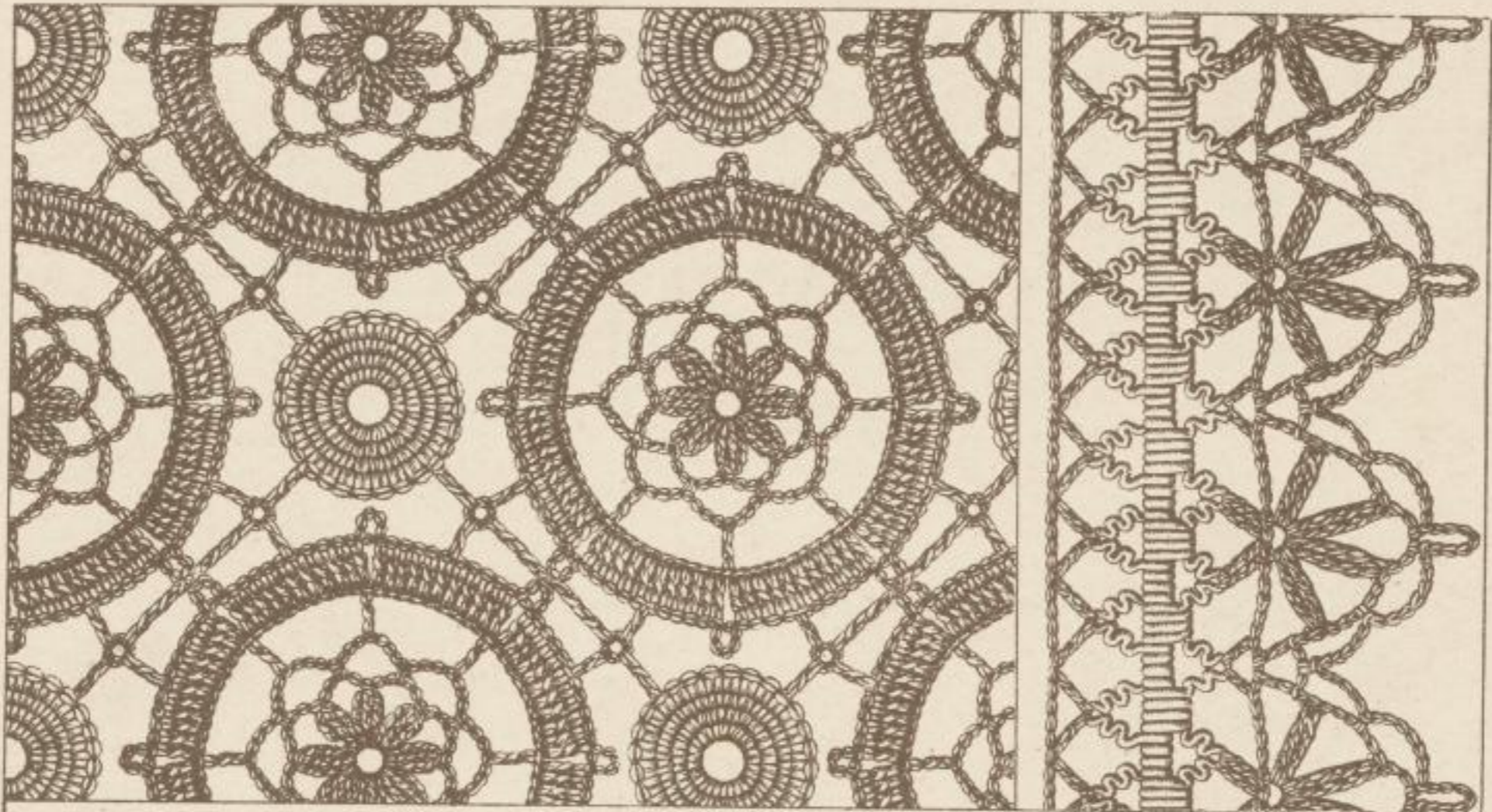
C



Druck von Gutermann & Schmidt, St.Gallen

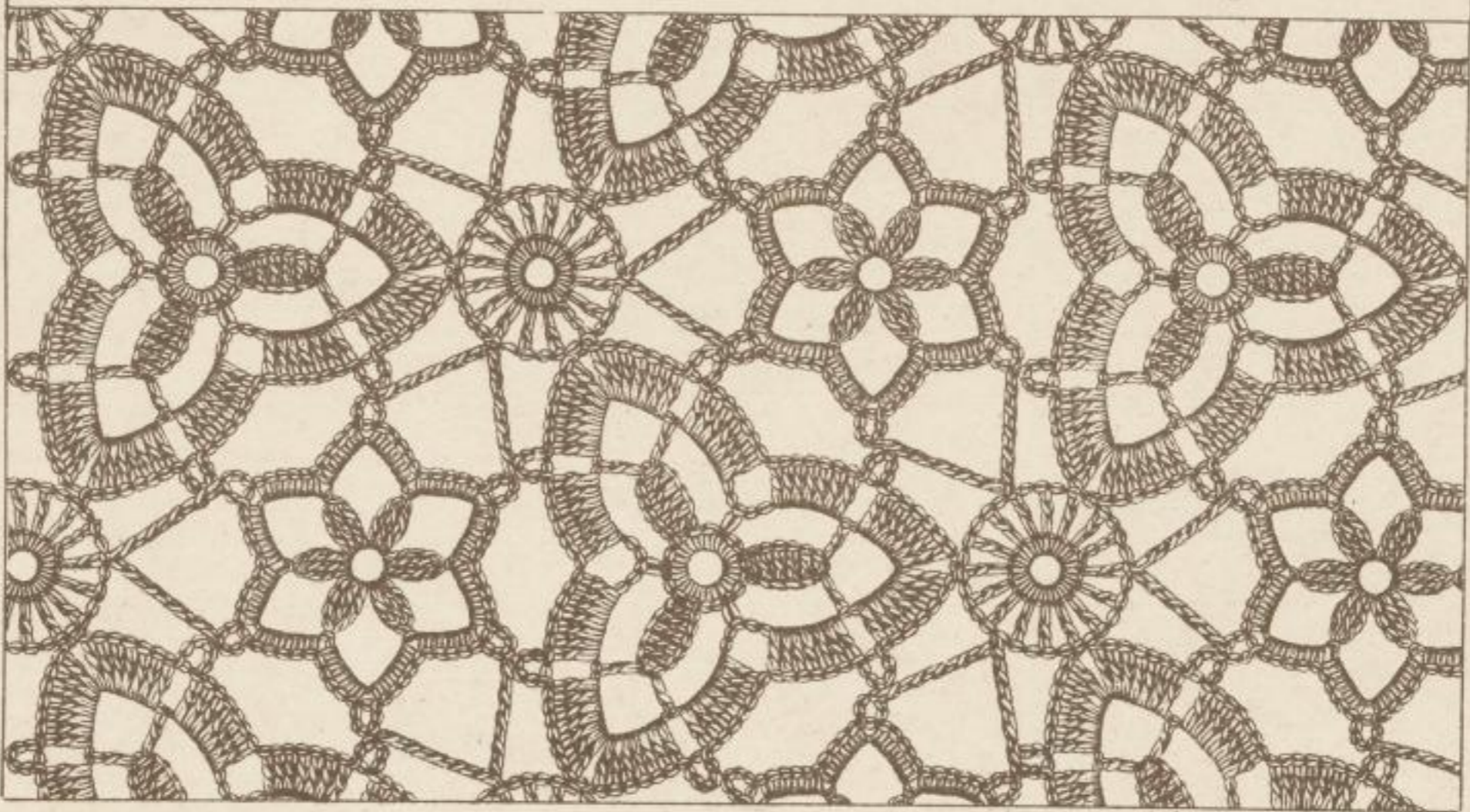
Nachdruck verboten





A

B



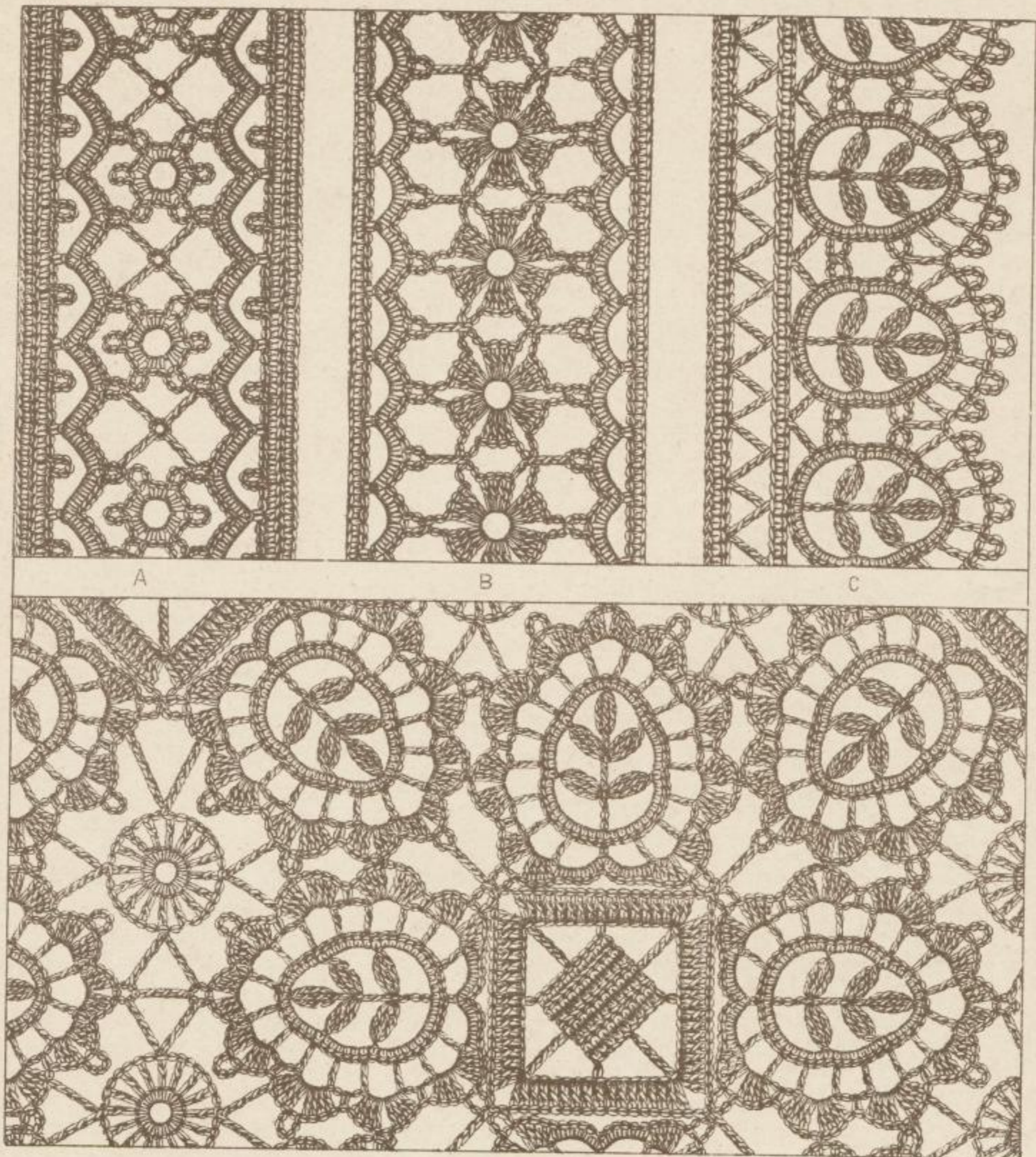
C



Druck von Gutermann & Schmidt, St.Gallen

Nachdruck verboten



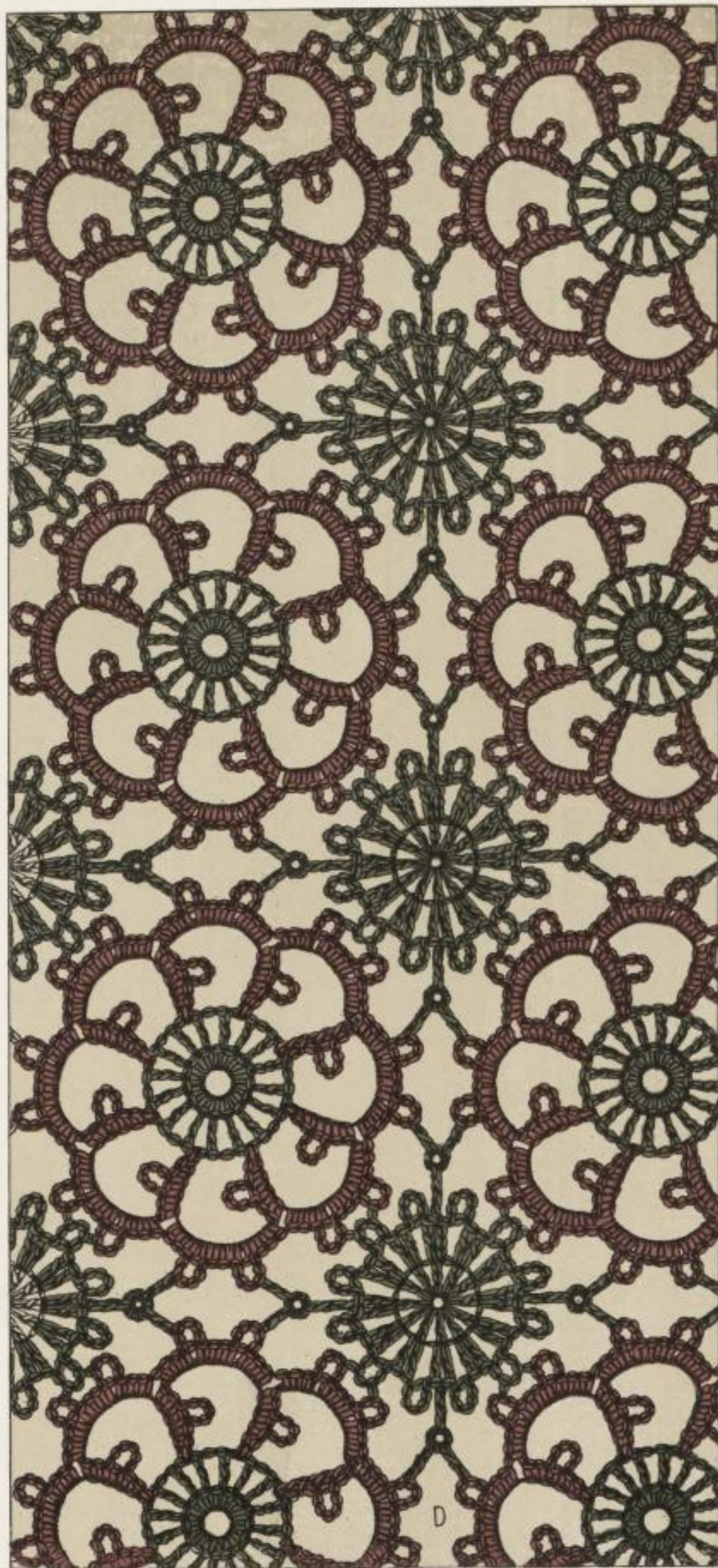


A

B

C

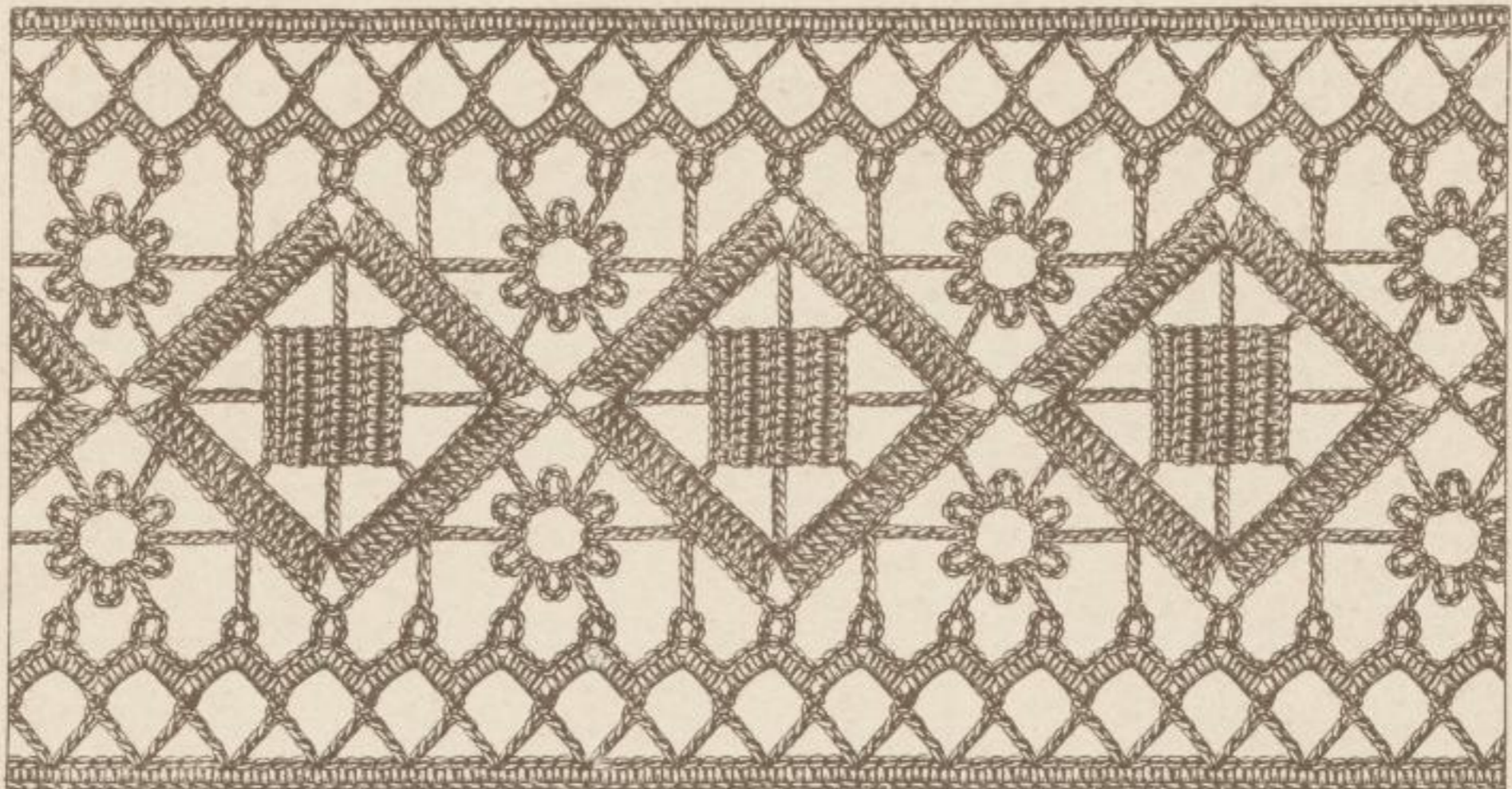
D



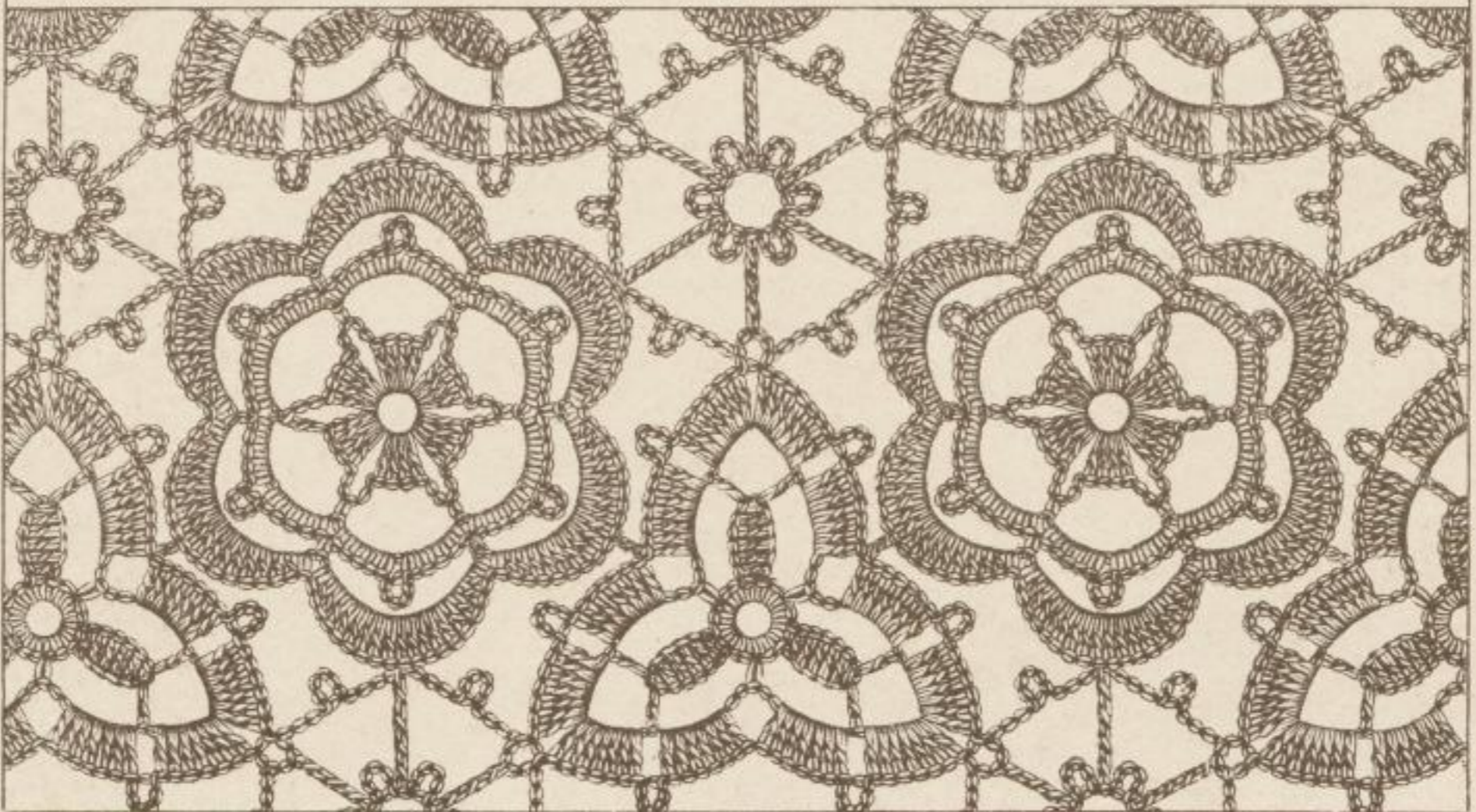
Druck von Gulermann & Schmidt, St.Gallen

Nachdruck verboten



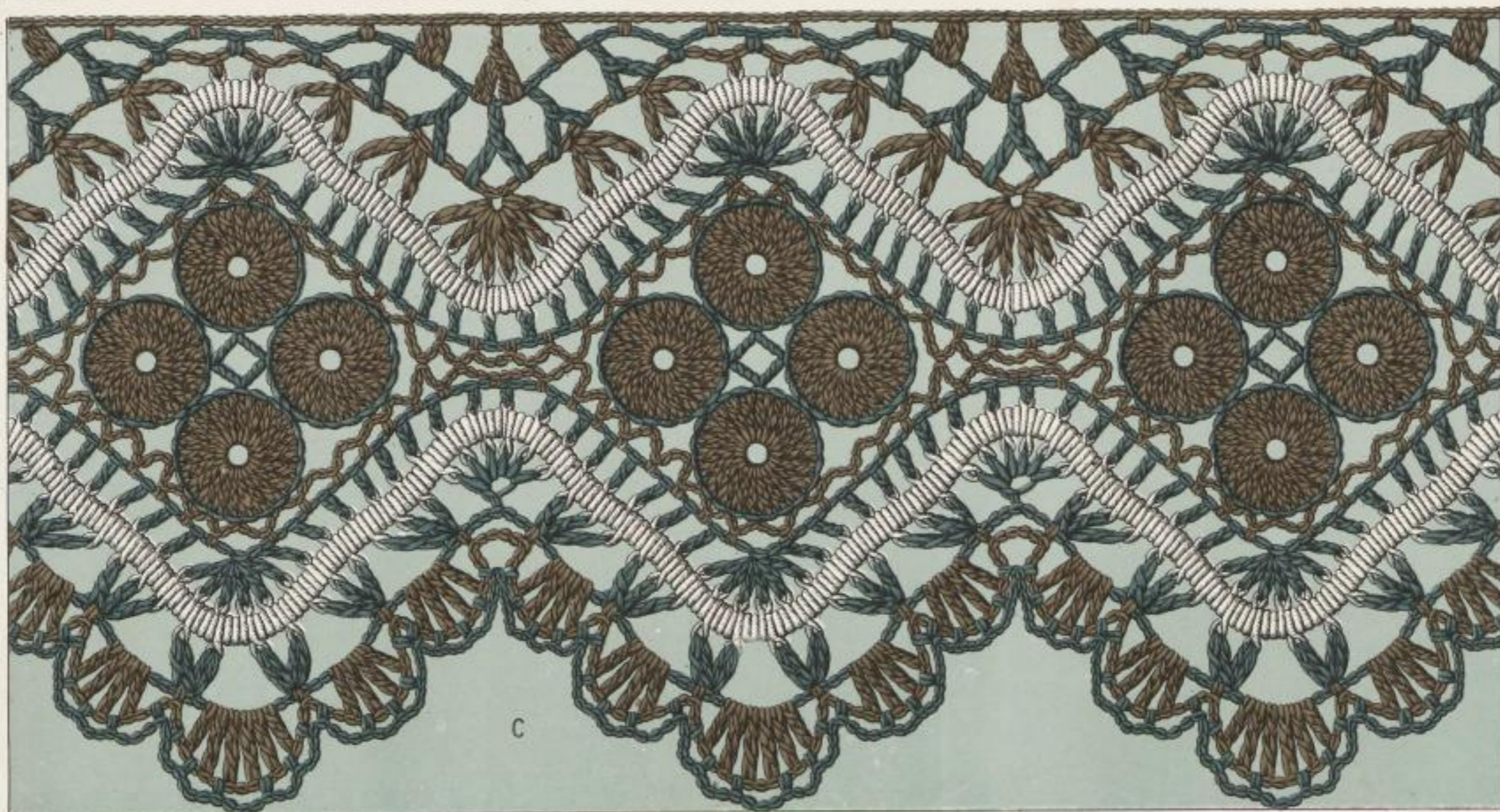
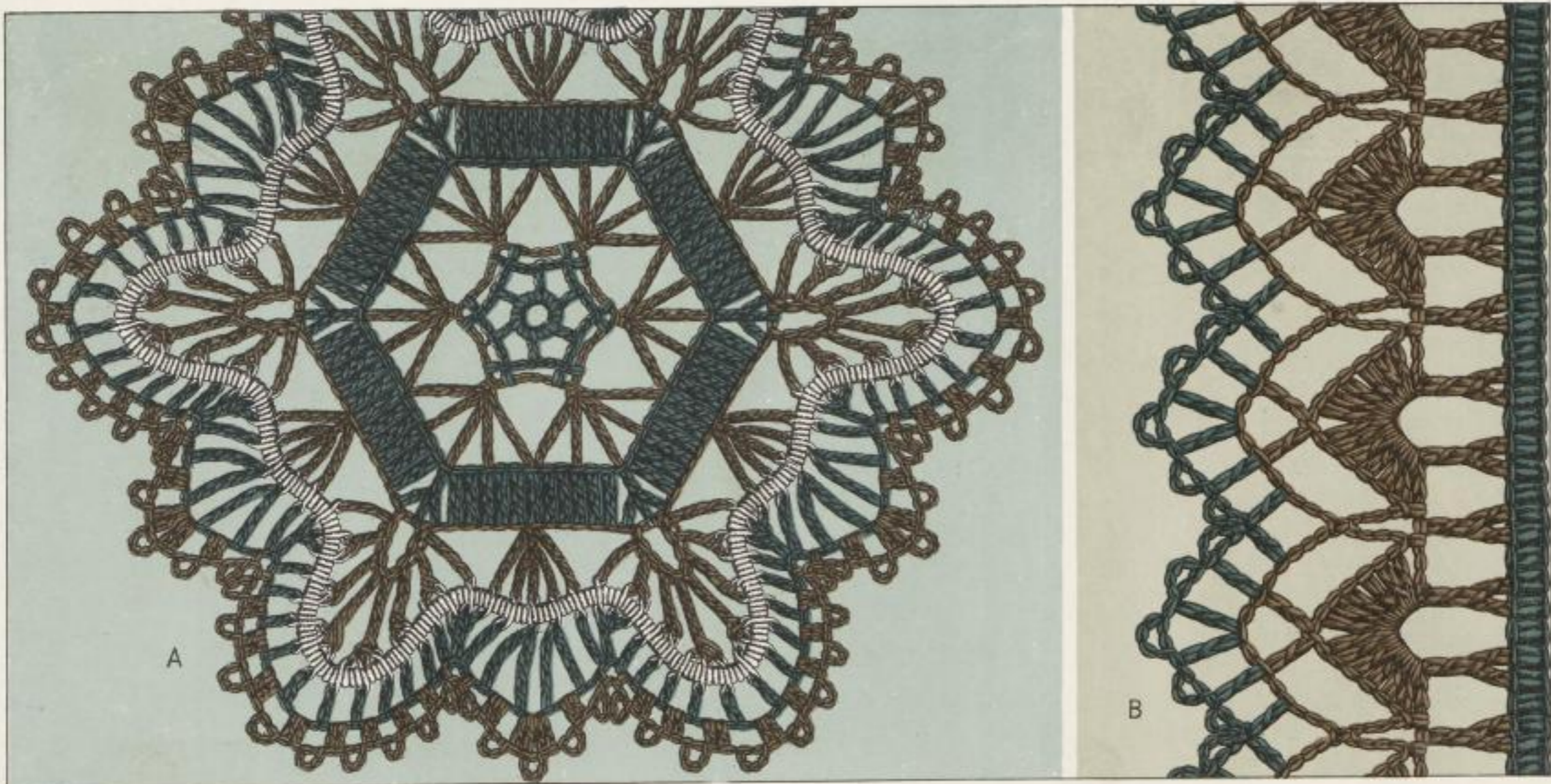


A



B





Druck von Gutermann & Schmidt, St. Gallen

Nachdruck verboten

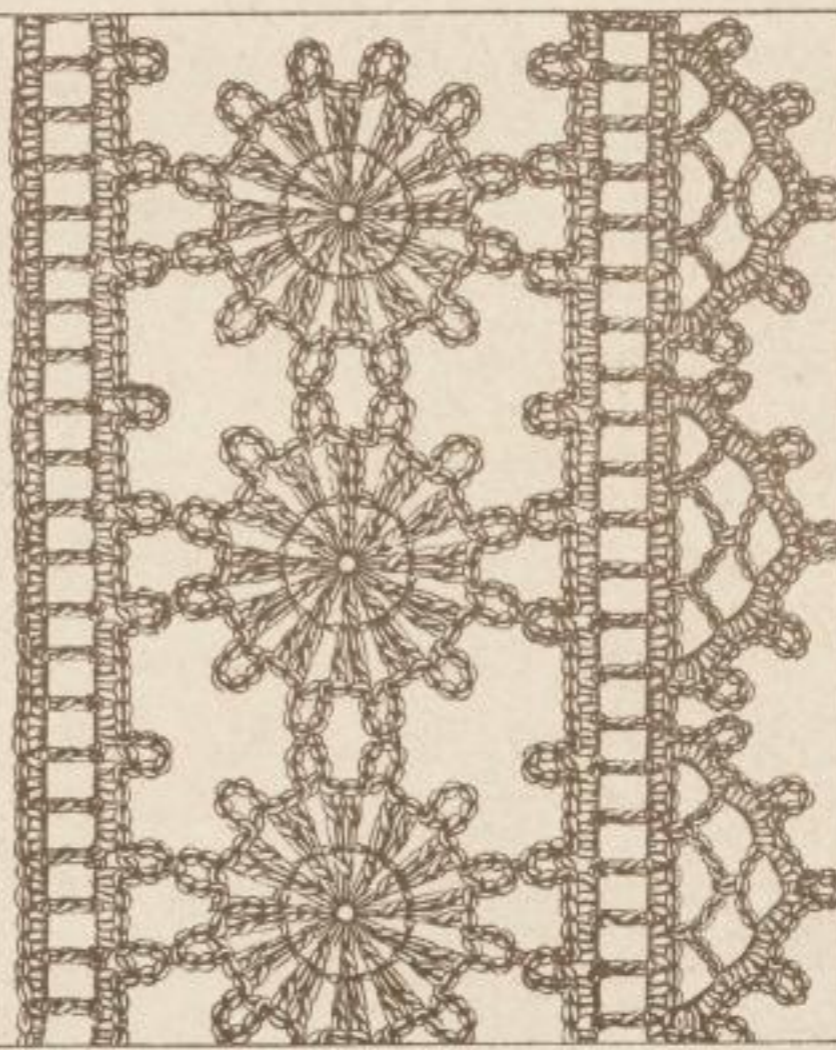




A



B



C





[Blank paper label]