

Liegende Maschine der Société de Bitschwiller
in Bitschweiler-Thann.

(5-7).

Fig. 5.

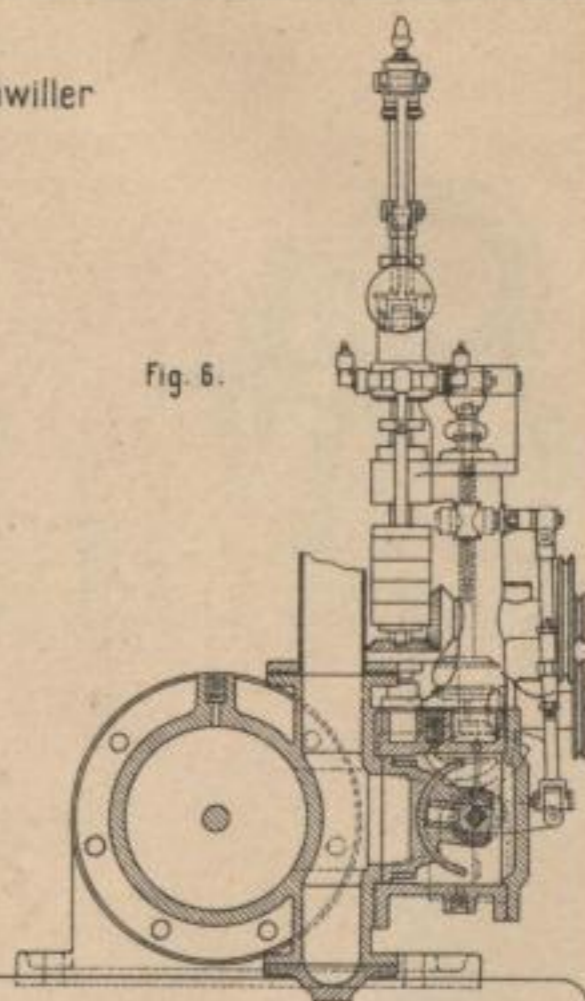
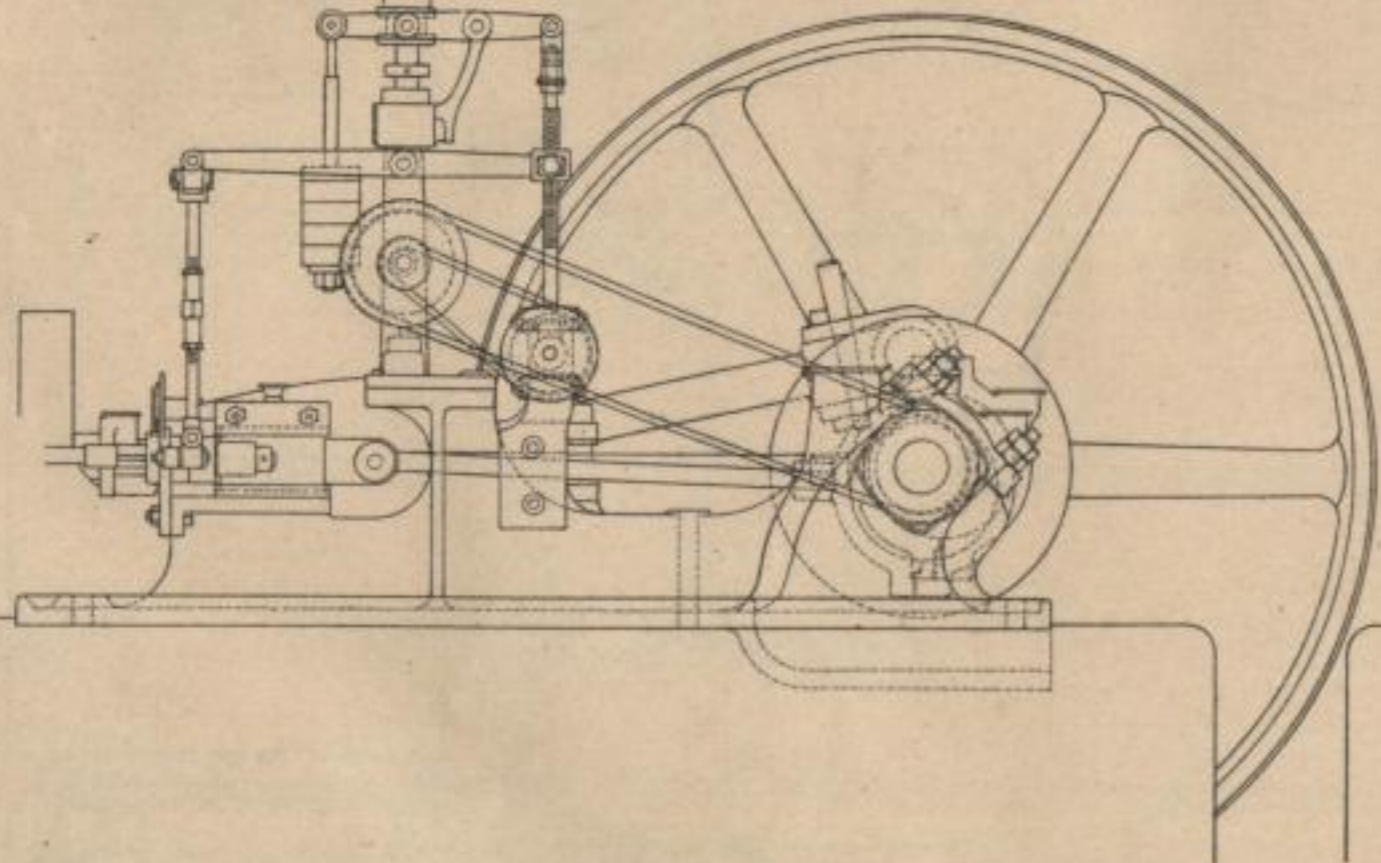
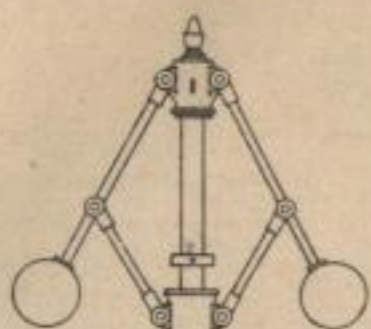


Fig. 6.

Fig. 3.

Liegende Maschine der C^{ie} de l' Horne
in Lyon.

(1-4).

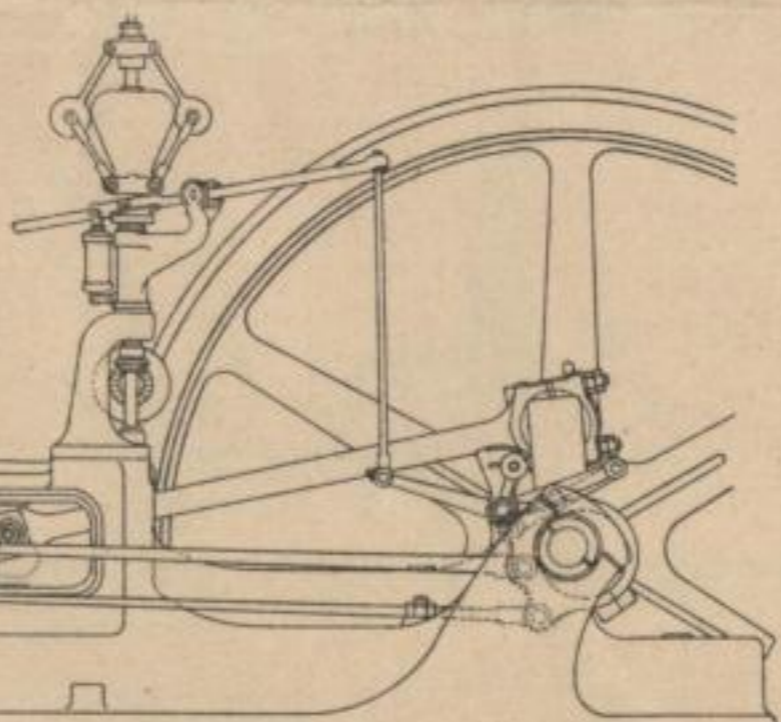
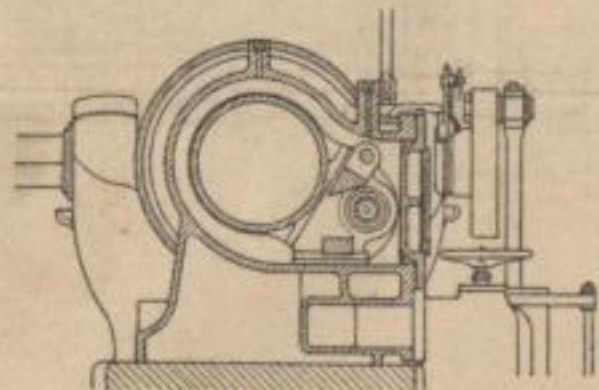


Fig. 1.

Fig. 7.

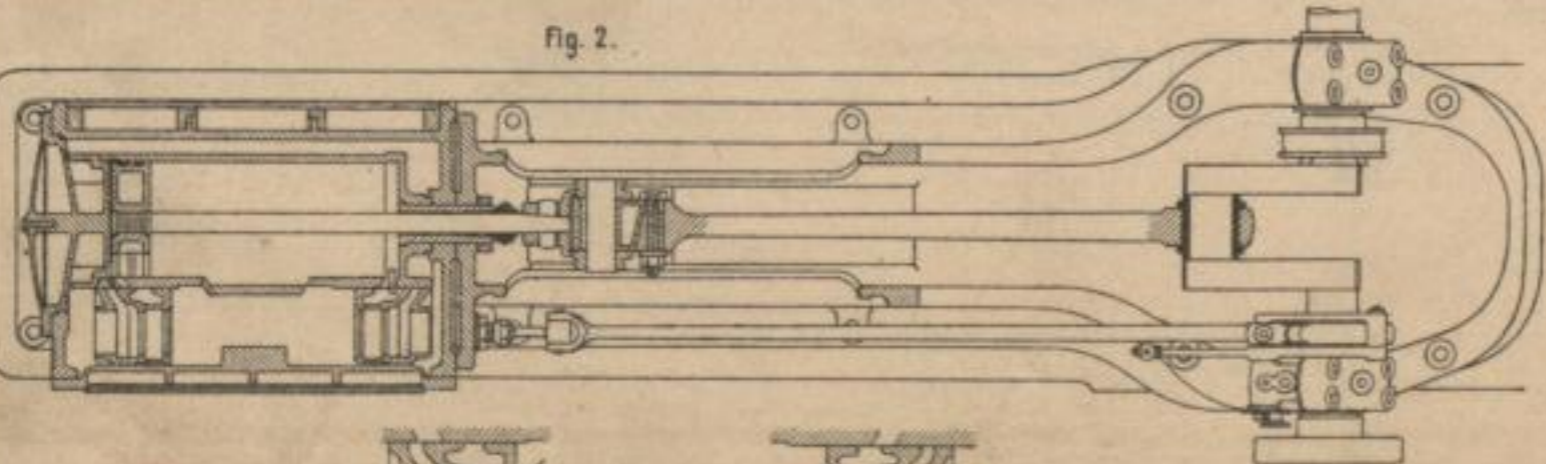
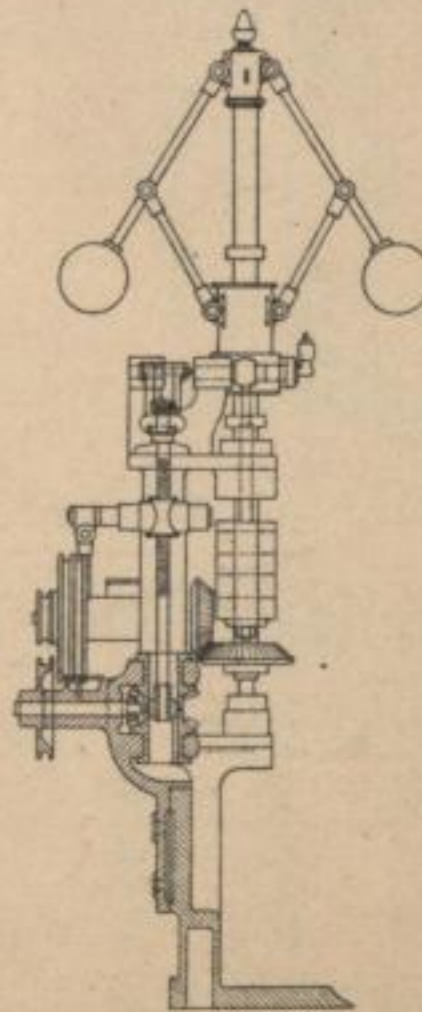


Fig. 2.

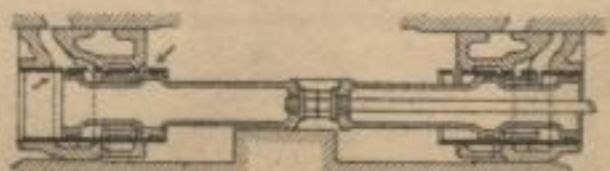


Fig. 4.



Libr. Buch v. F. H. Holtz für Waldz.