

Liegende Maschine der Elsässischen Maschinenbaugesellschaft
in Belfort. (28-30).



Fig. 22.

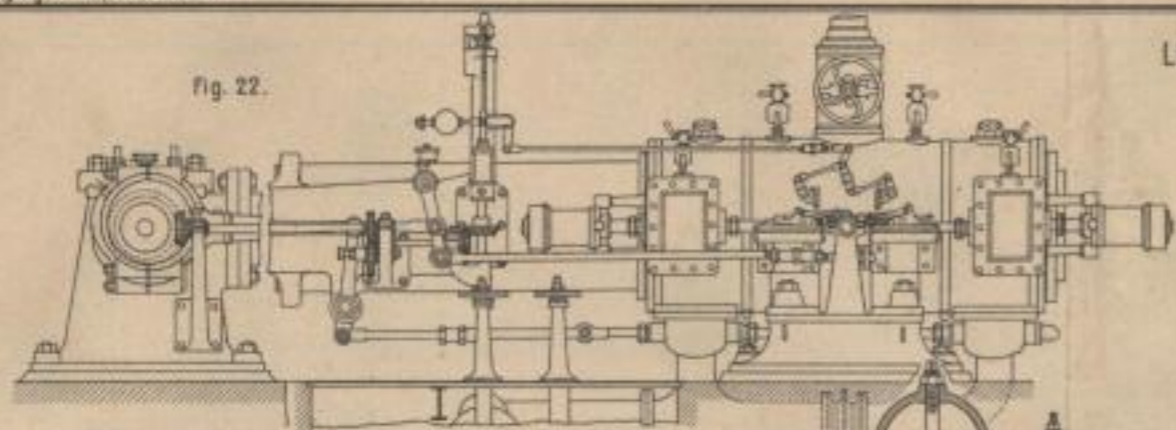


Fig. 28.

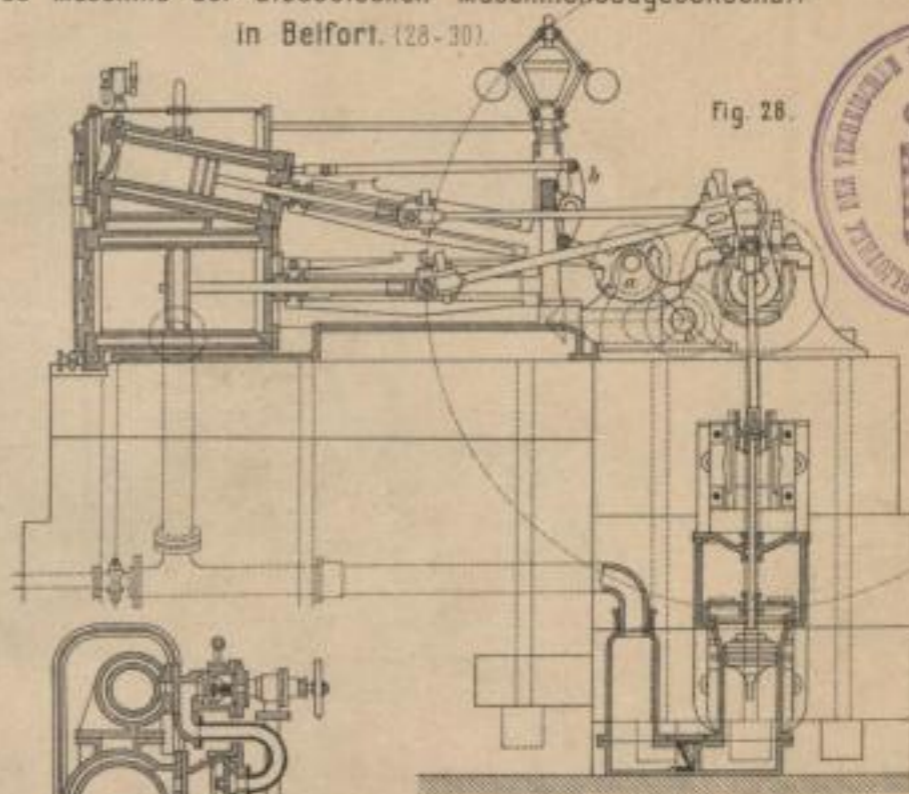


Fig. 27.

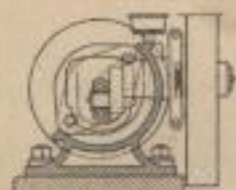
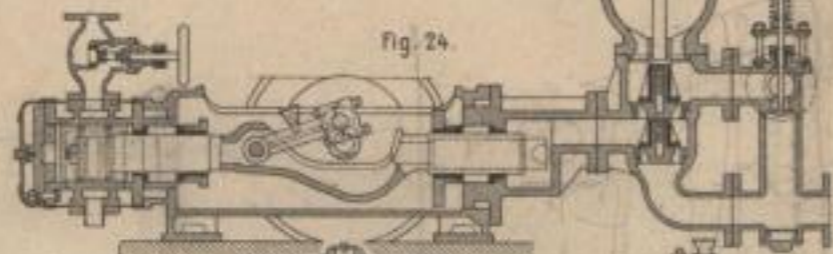


Fig. 24.



Dampfseispumpe
von Escher, Wyss u. Cie
in Zürich.
(24-27)

Fig. 25.

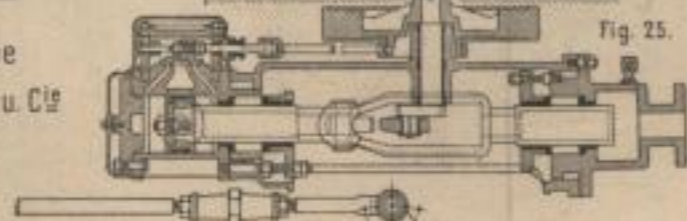


Fig. 26.

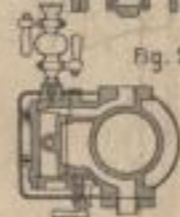


Fig. 30.

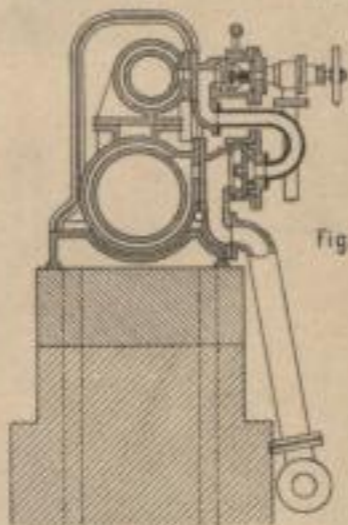


Fig. 29.

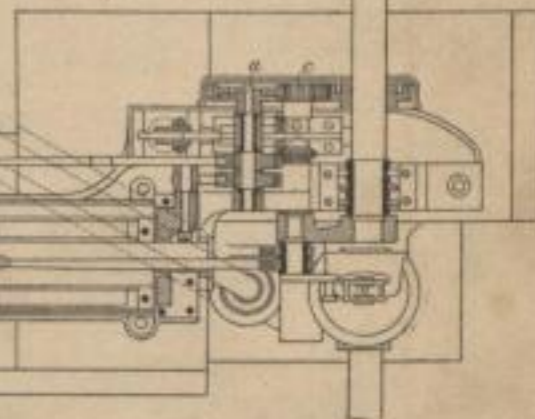
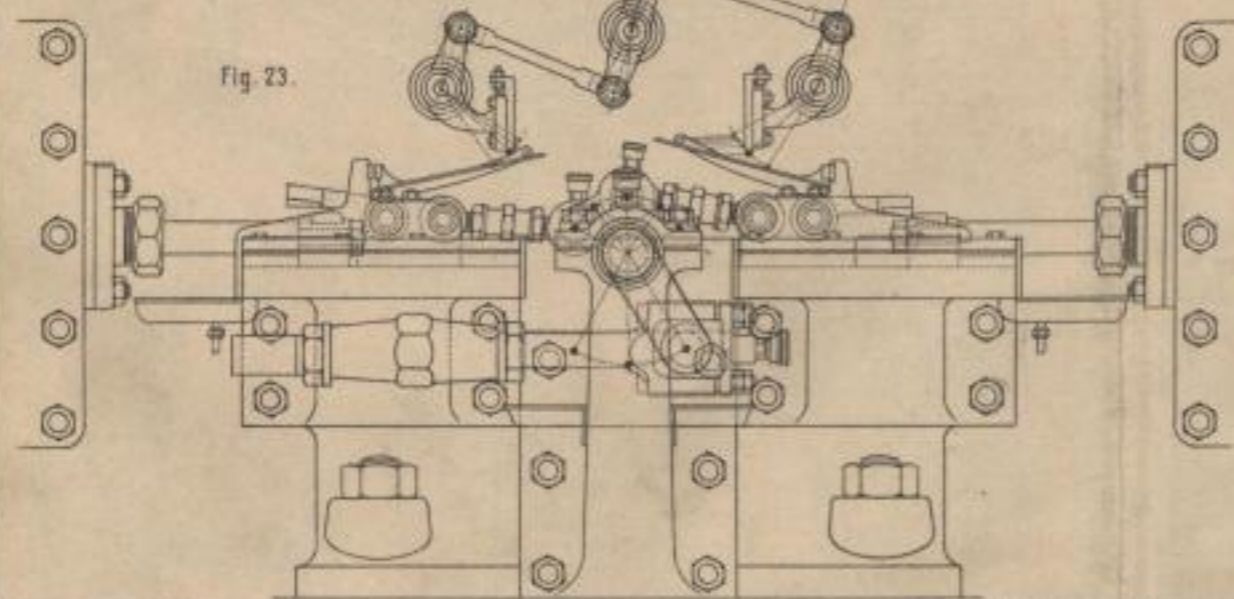


Fig. 23.



Lith. Anat. v. K. Wirtz, Darmstadt