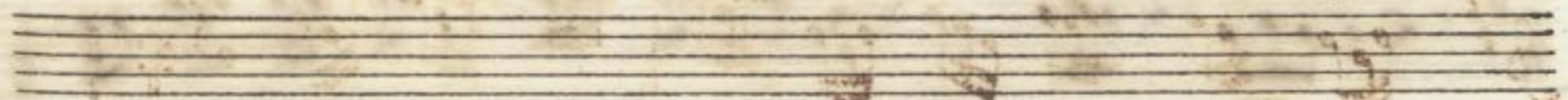
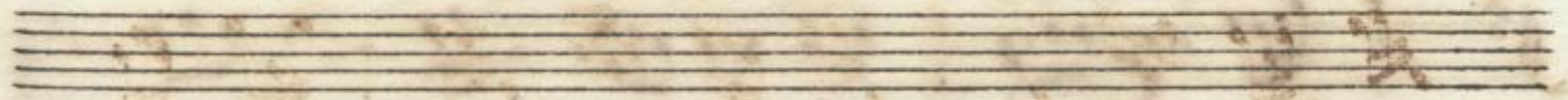


Handwritten musical notation on three staves. The first staff begins with the tempo marking *Allegro* and a treble clef. The notation consists of rhythmic patterns and notes, with some numbers (possibly 9) written above the notes. The second and third staves continue the musical piece, ending with a double bar line and repeat signs.



Handwritten musical notation on a single staff, featuring a bass clef and several notes.

Handwritten musical notation on a single staff, featuring a treble clef and several notes.

