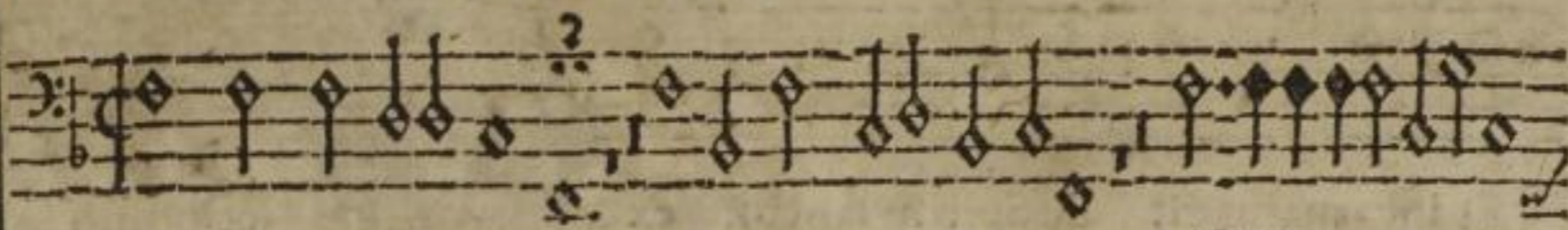
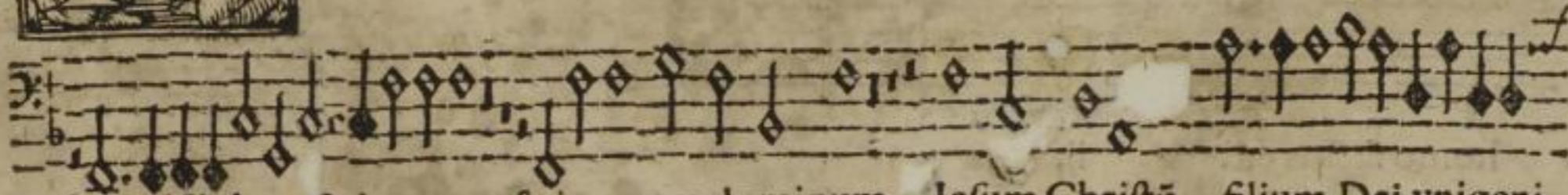


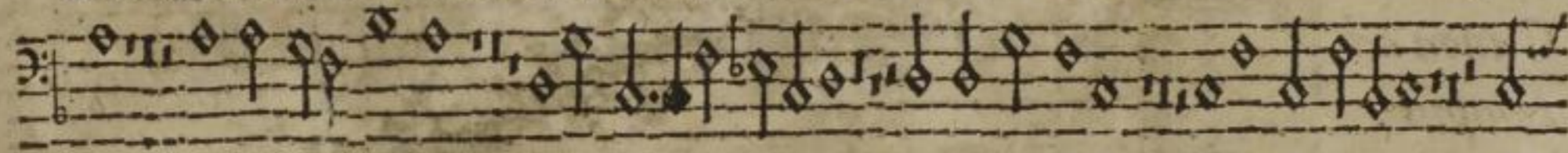
BASSVS.



Patrem omnipotentem factorem cœli & terræ visibilium omnium



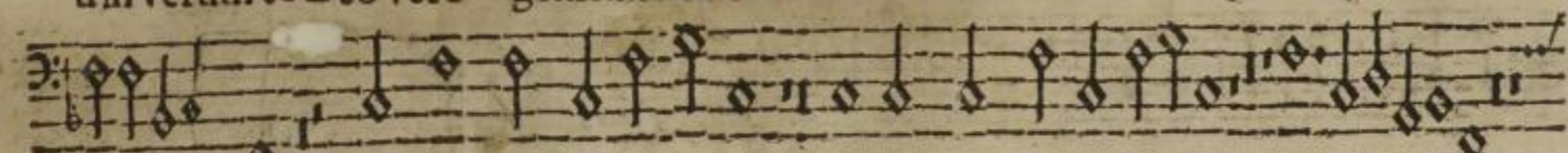
& inuisibilium & in vnum & in vnum dominum Iesum Christū filium Dei vnigeni-



tum & ex patre natum ante omnia secula Deum de Deo lumē de lumine De-



um verum de Deo vero genitum non factum consubstantialem patri per quē om-



nia facta sunt Qui propter nos homines & propter nostrā salutem descēdit de cœlis

O iij