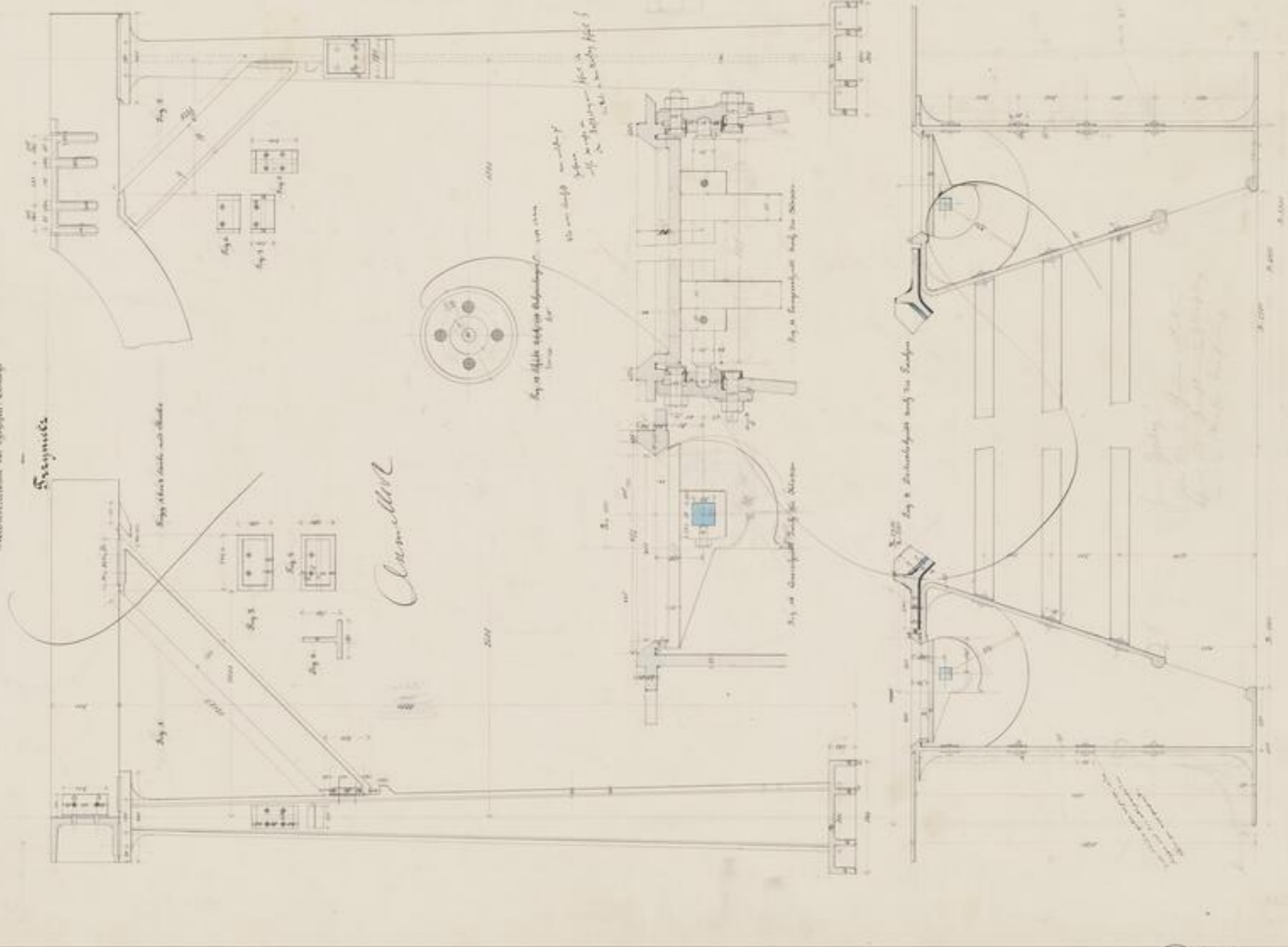


Entwurf von  
 Umbau  
 des Hofens Nr. 1 der Friedrich-  
 Wilhelms Hütte  
 in  
 Eisendorf.



Stützkonstruktion des Schmelzofens

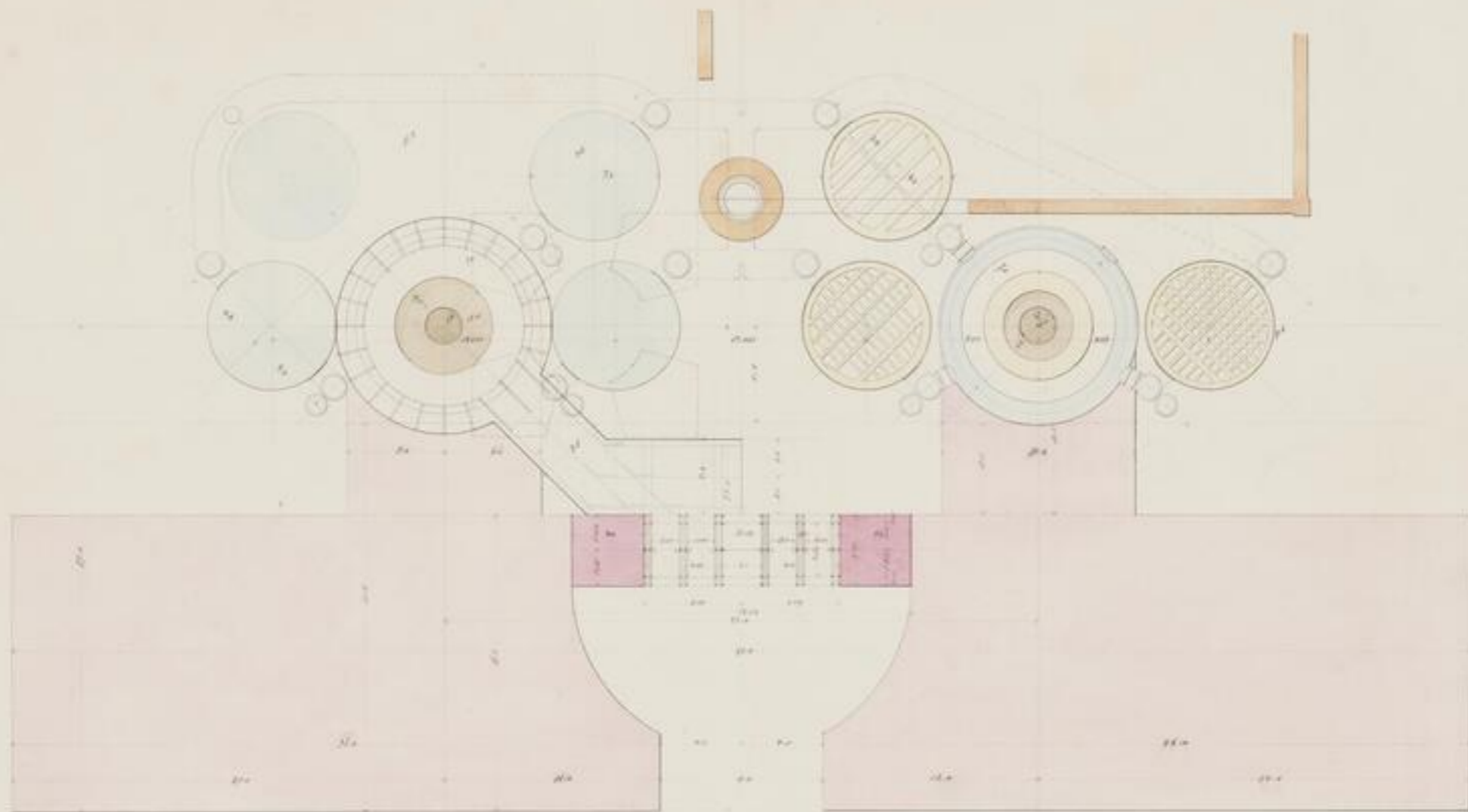
Stützkonstruktion



Camell



Handwritten text at the bottom of the page, possibly a signature or date.

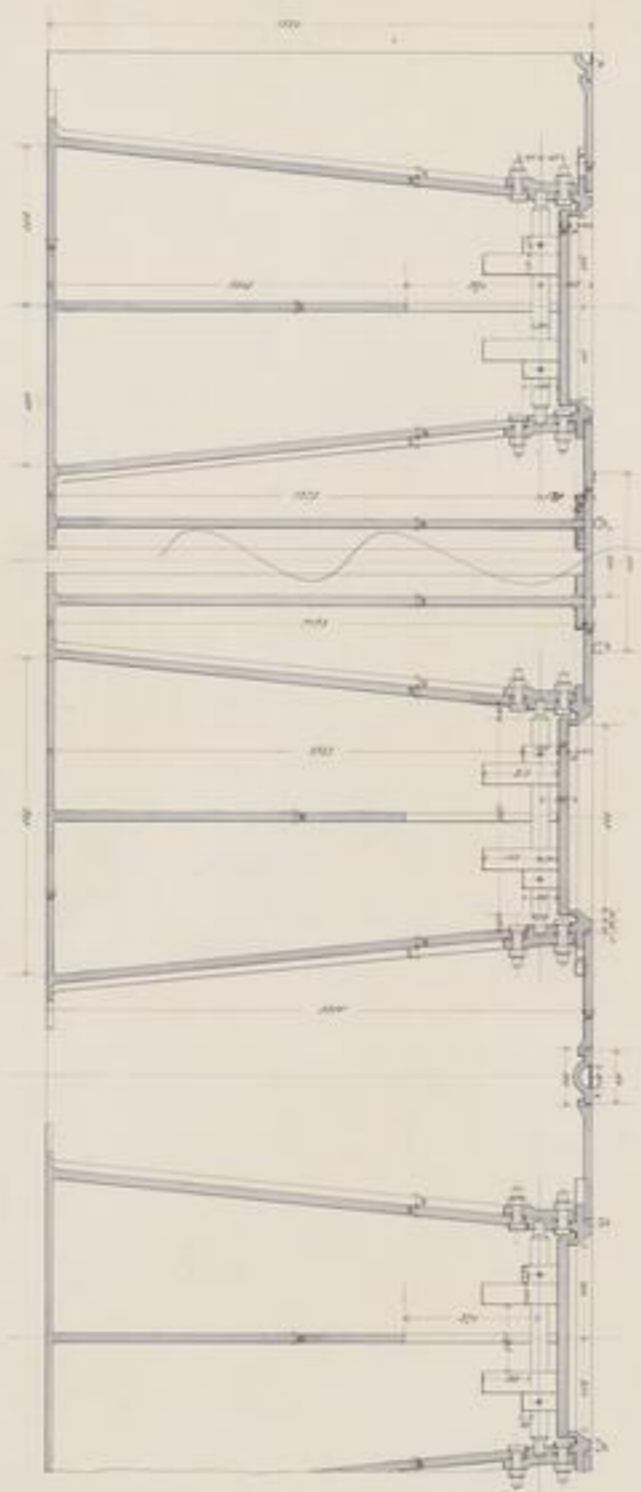


Entwurf von  
 Umbau des Hochofen Werks  
 der Friedrich-Wilhelmschütte  
 in  
 Froisdorf

1872



15

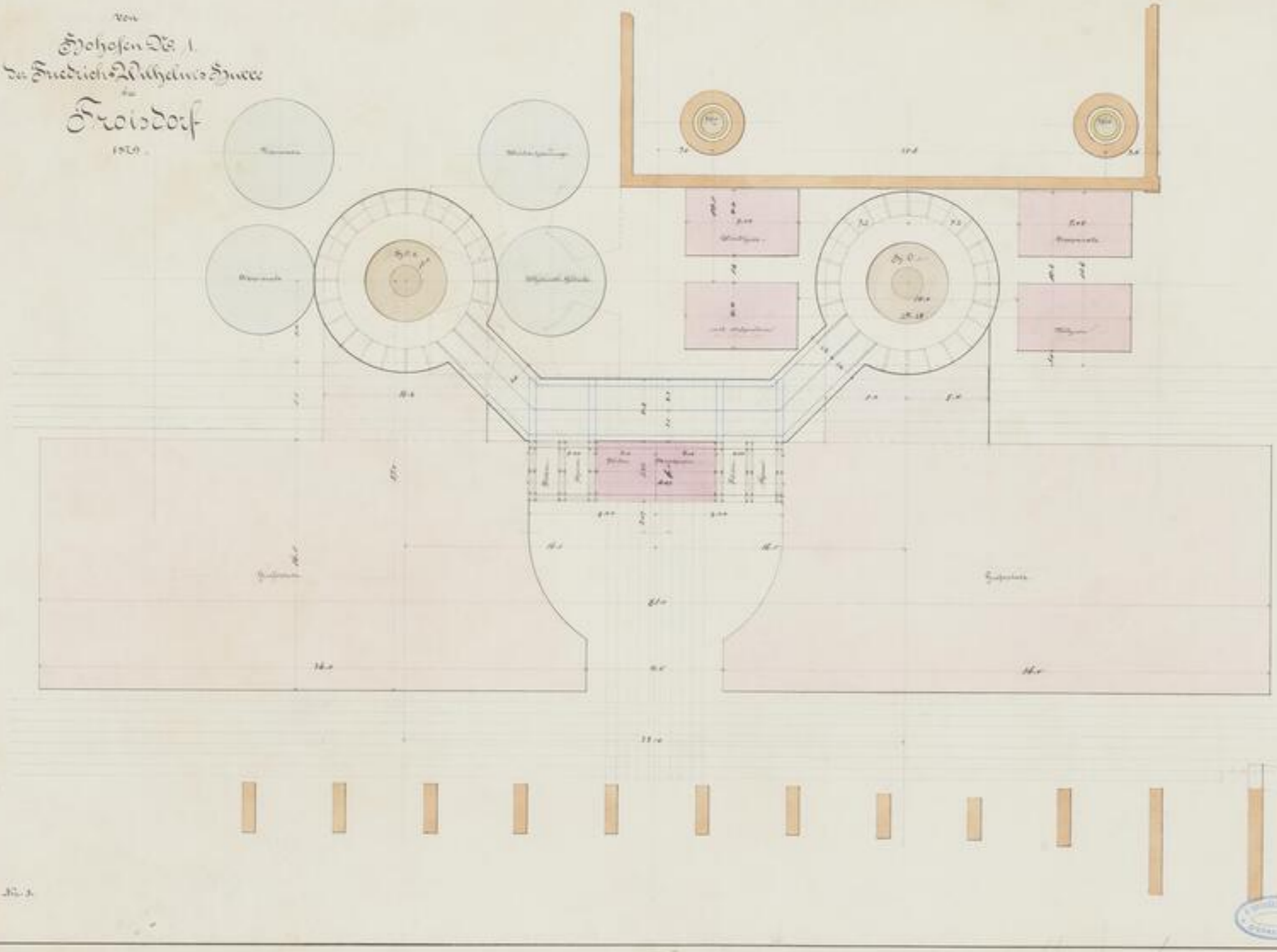


*Handwritten note or signature*



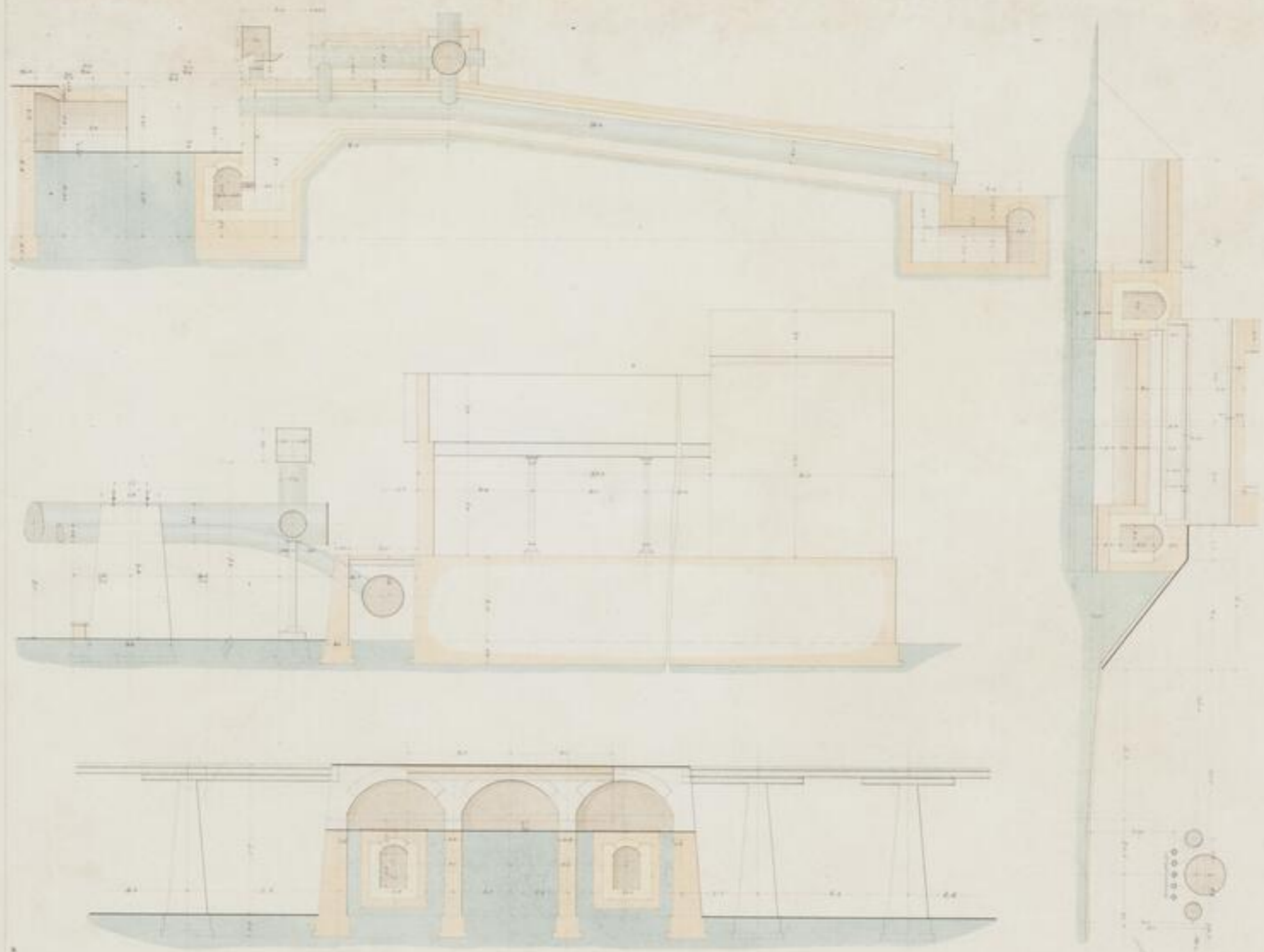
15

Entwurf zum Limbau  
 von  
 Hofhofen Nr. 1.  
 des Friedrich-Wilhelms-Hütten-  
 werks  
 Freisdorf  
 1829



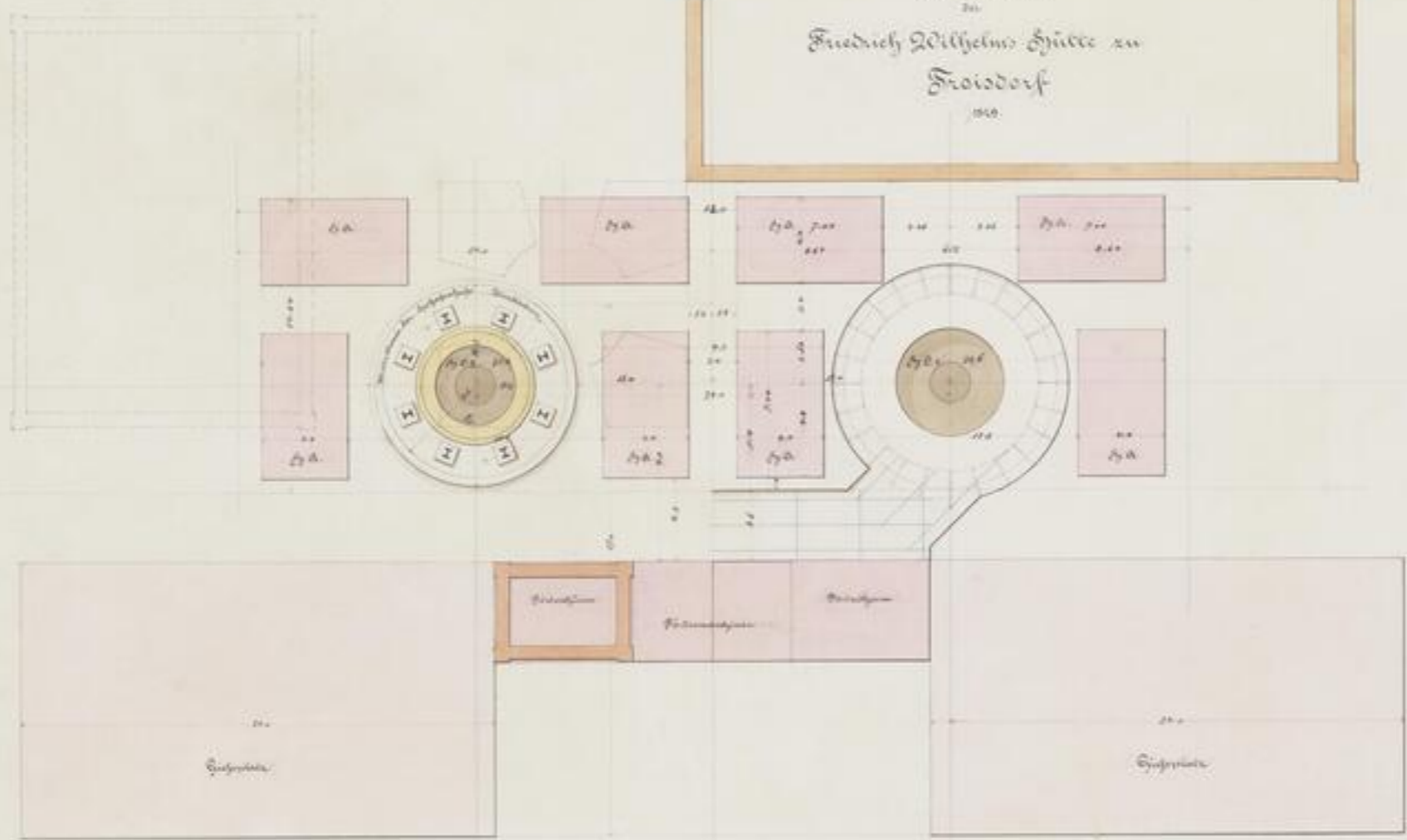
11. 3.





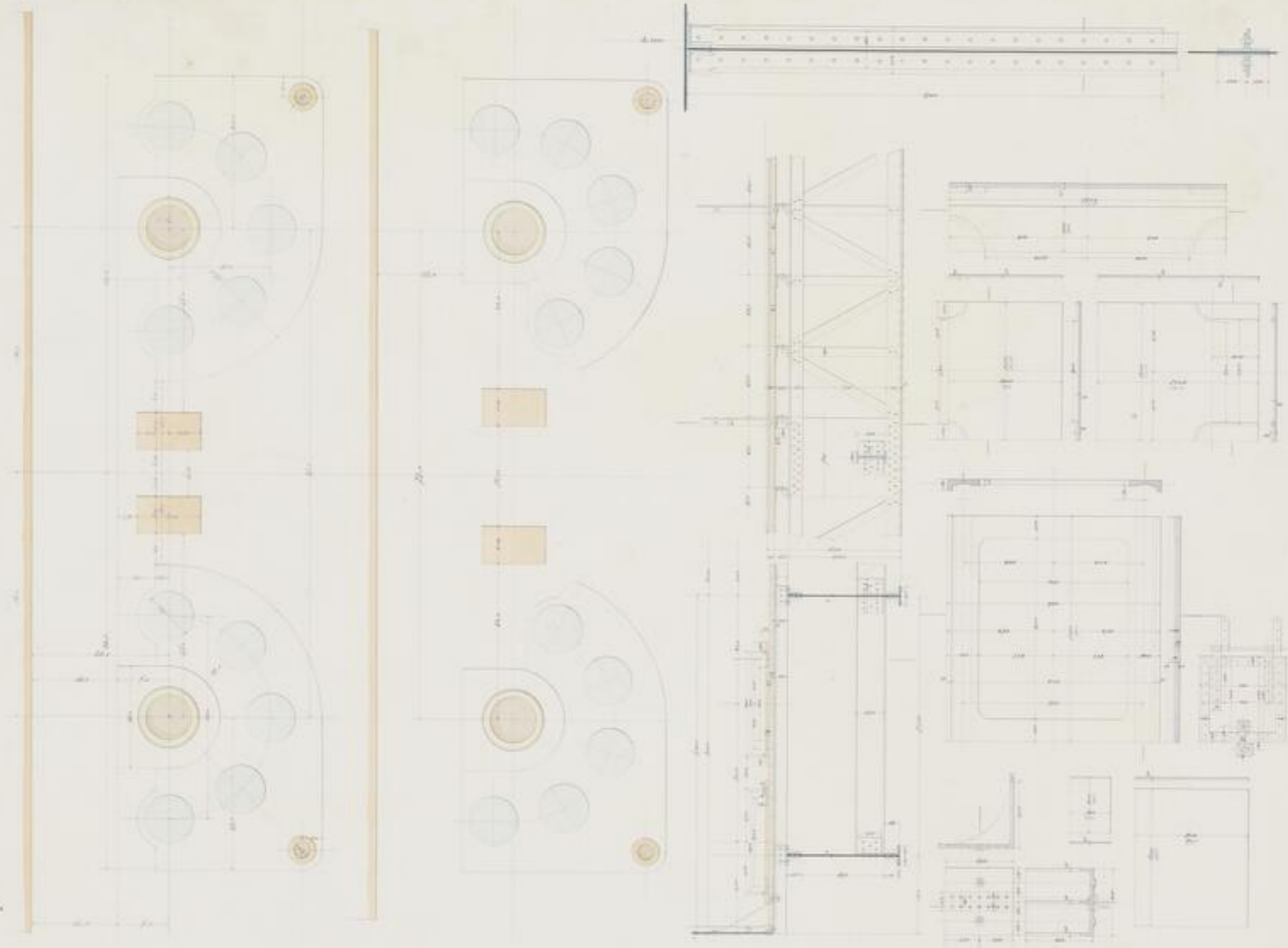
TUM  
12 02/11  
p. 2  
- 2 -

Entwurf zum Ausbau  
 des  
 Hofes  
 Friedrich Wilhelms Straße zu  
 Froisdorf  
 1860



No. 1

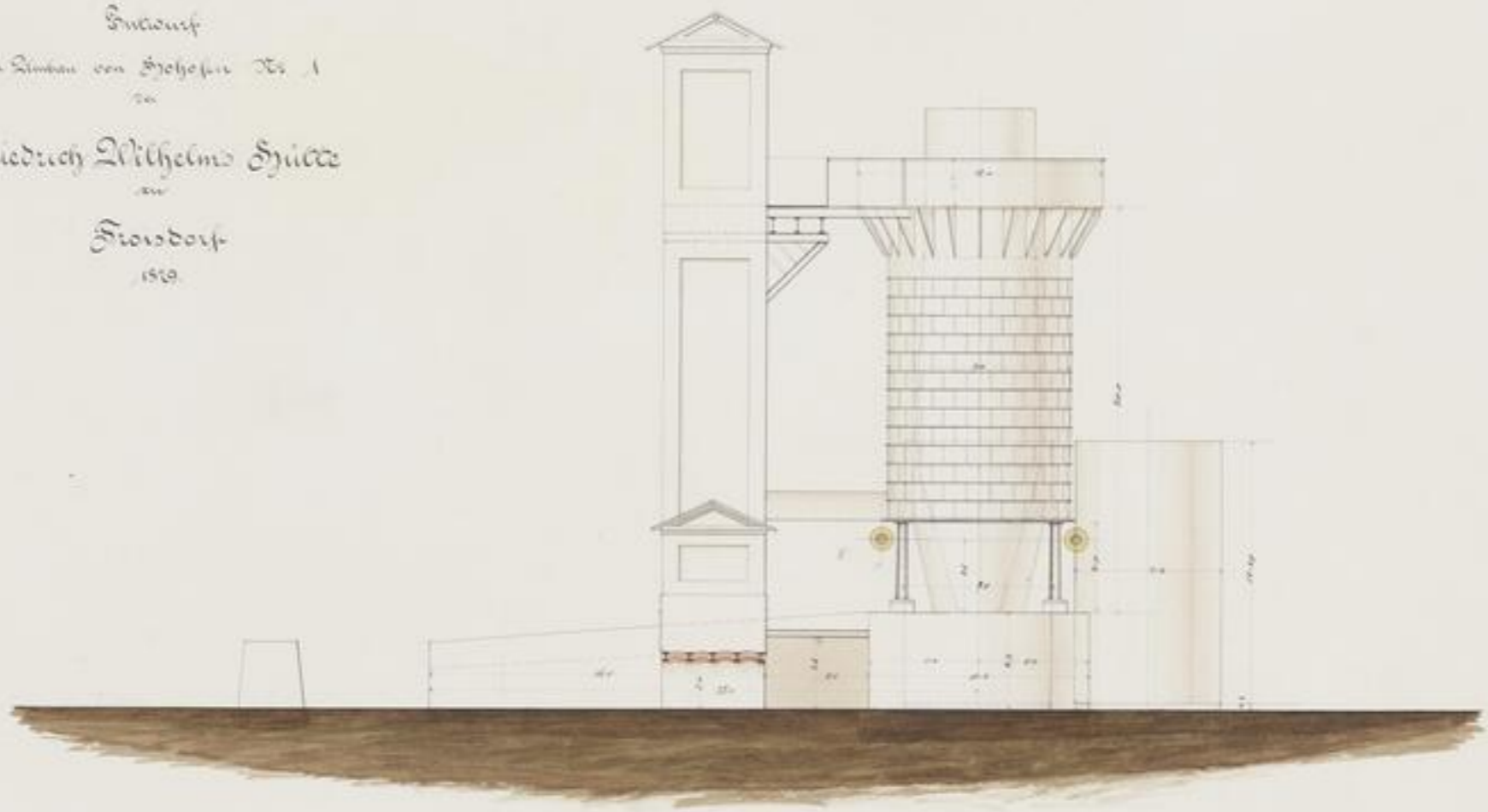




TU BERGAKADEMIE  
 FREIBERG  
 1871

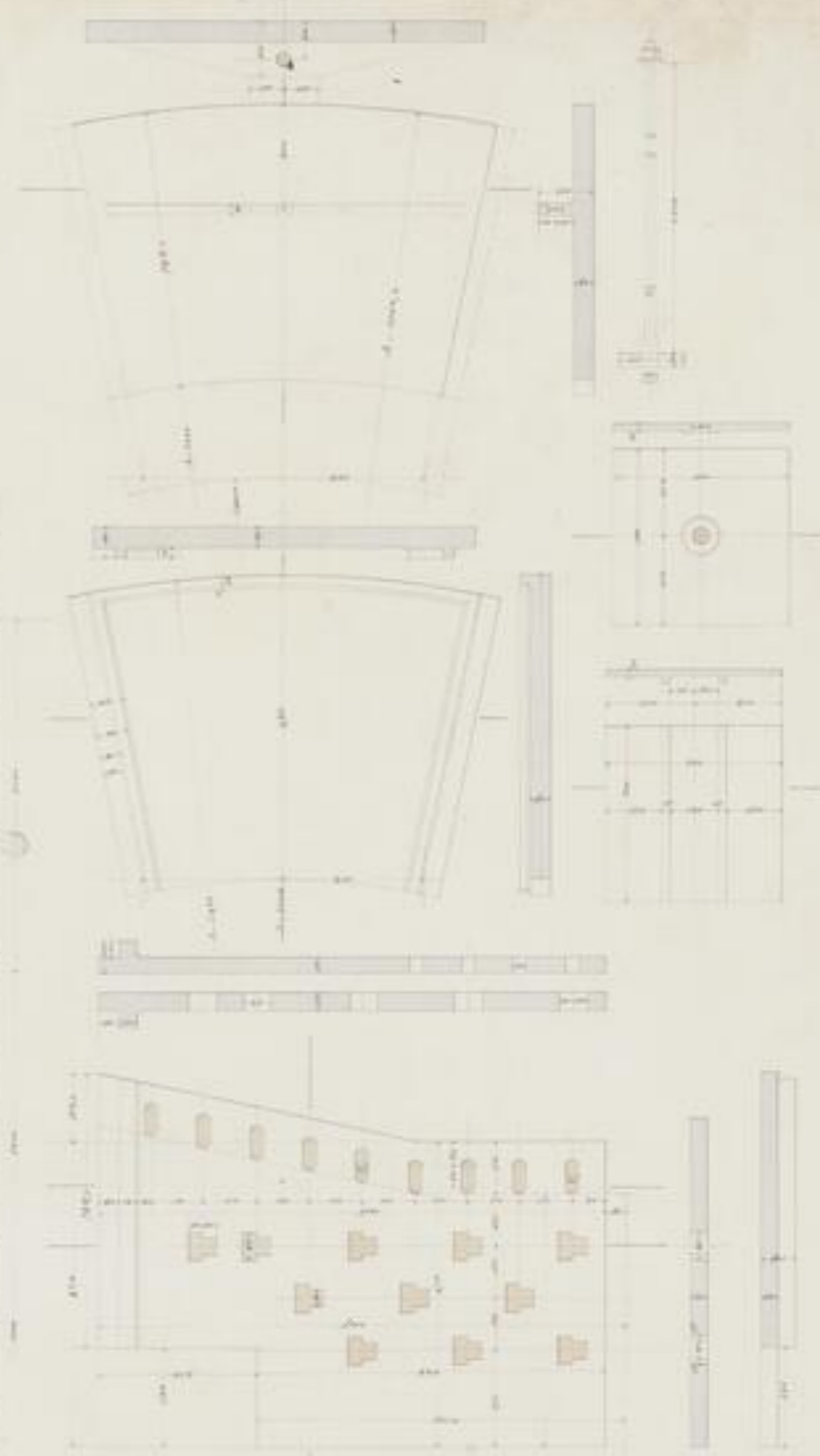
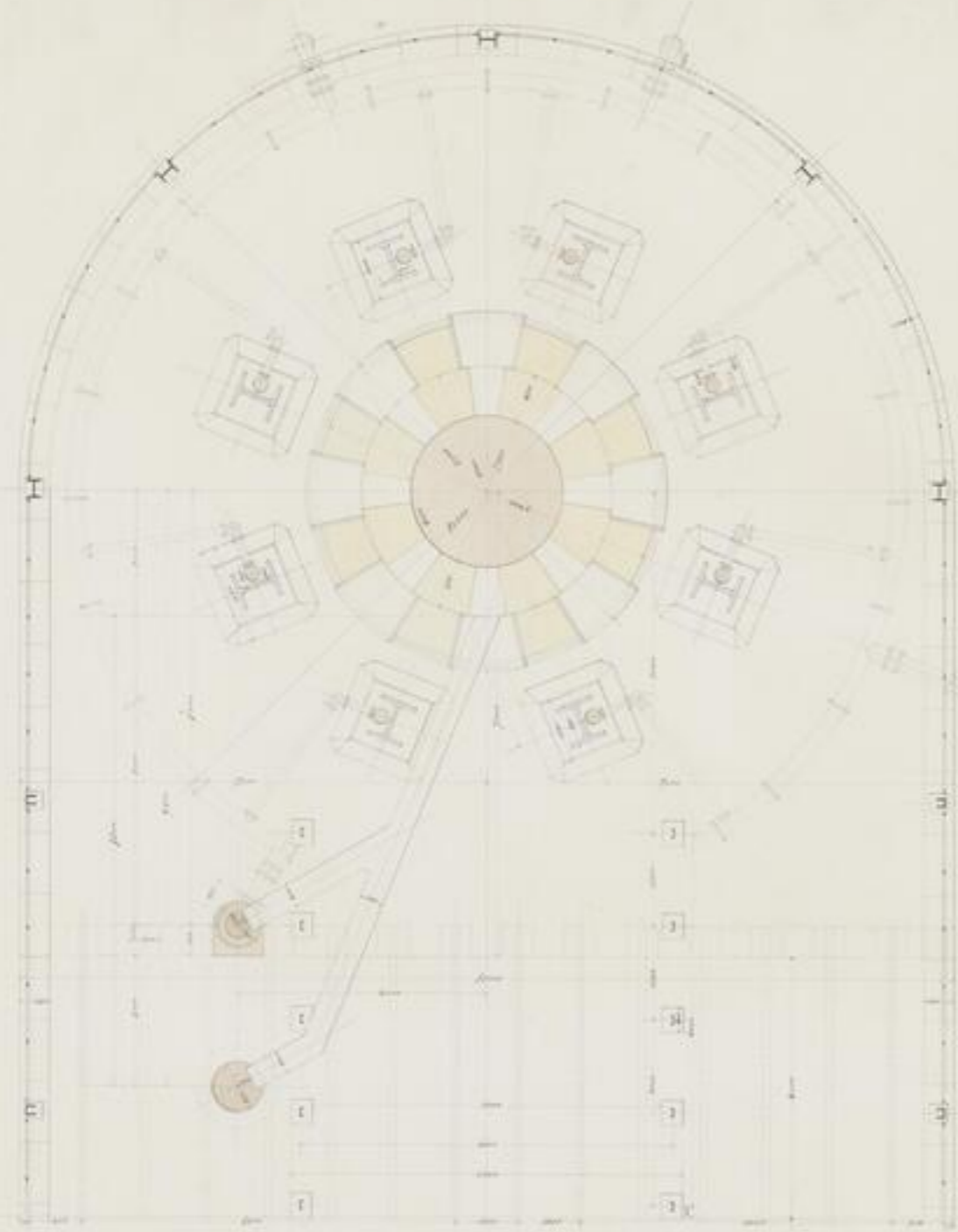


Entwurf  
zum Anbau von Hochöfen No. 1  
an  
Friedrich Wilhelms Hütte  
an  
Froisdorf  
1819.



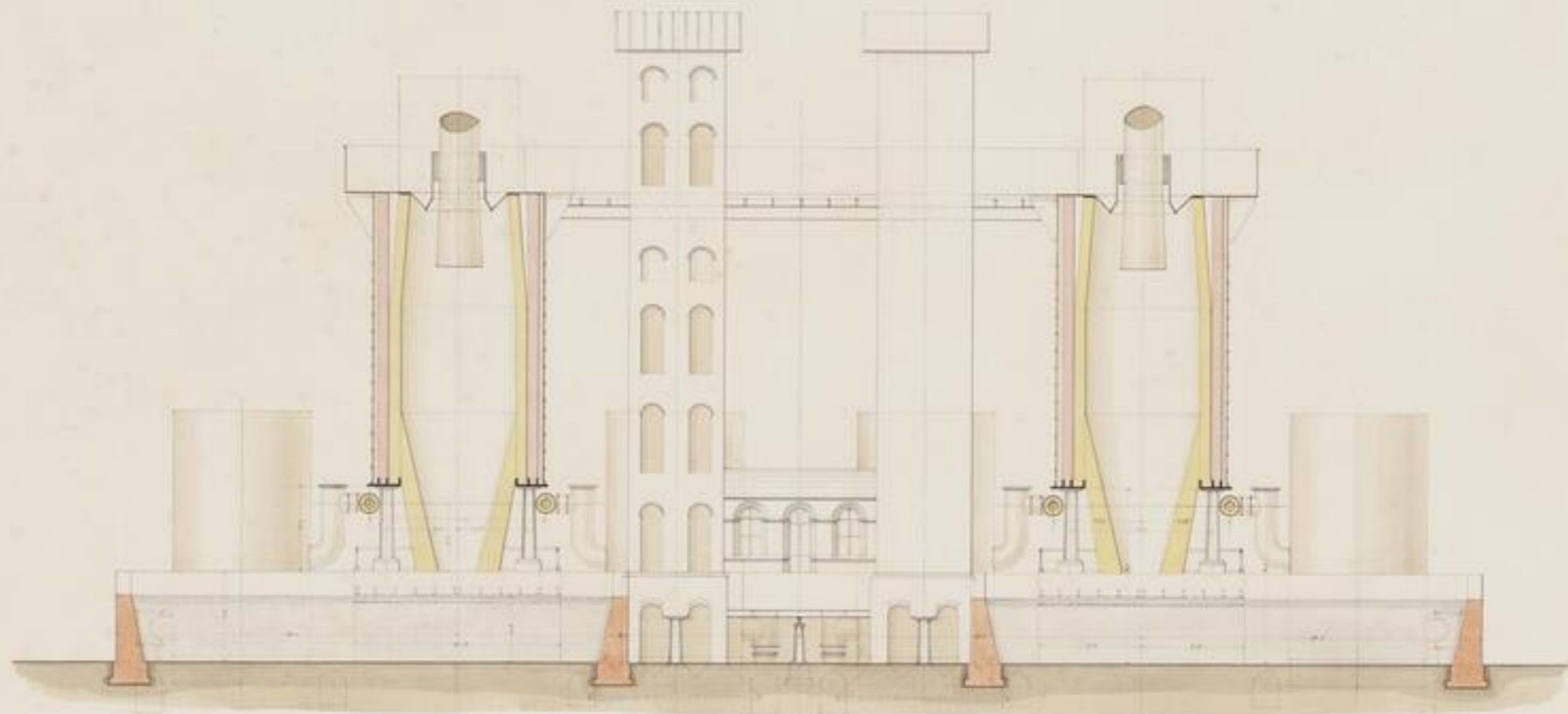
No. 1.






 XVII 252/1  
 1884

Entwurf  
Neubau Hochofen Nr. 1  
Friedrich-Wilhelm-Hütte  
Freiberg.



Nr. 6.





Freiberg  
1820  
-6-

*Handwritten signature or mark*

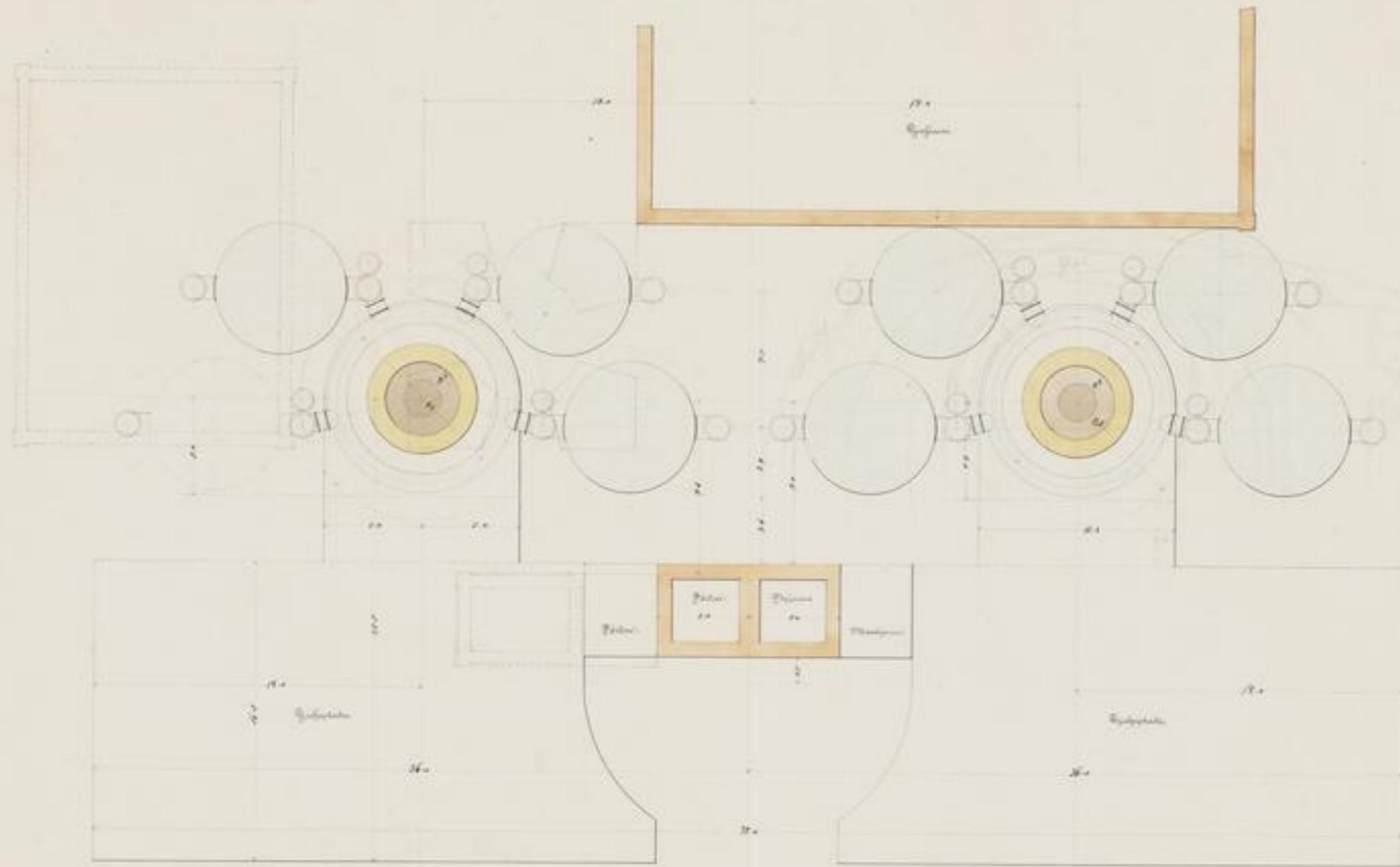


**SLUB**

Wir führen Wissen.

UNIVERSITÄTSBIBLIOTHEK  
FREIBERG





Entwurf  
 von  
 Albin von Hohenhausen  
 für  
 Friedrich Wilhelm Giese  
 in Freidorf.



Arch.





100 (111)  
100  
-7



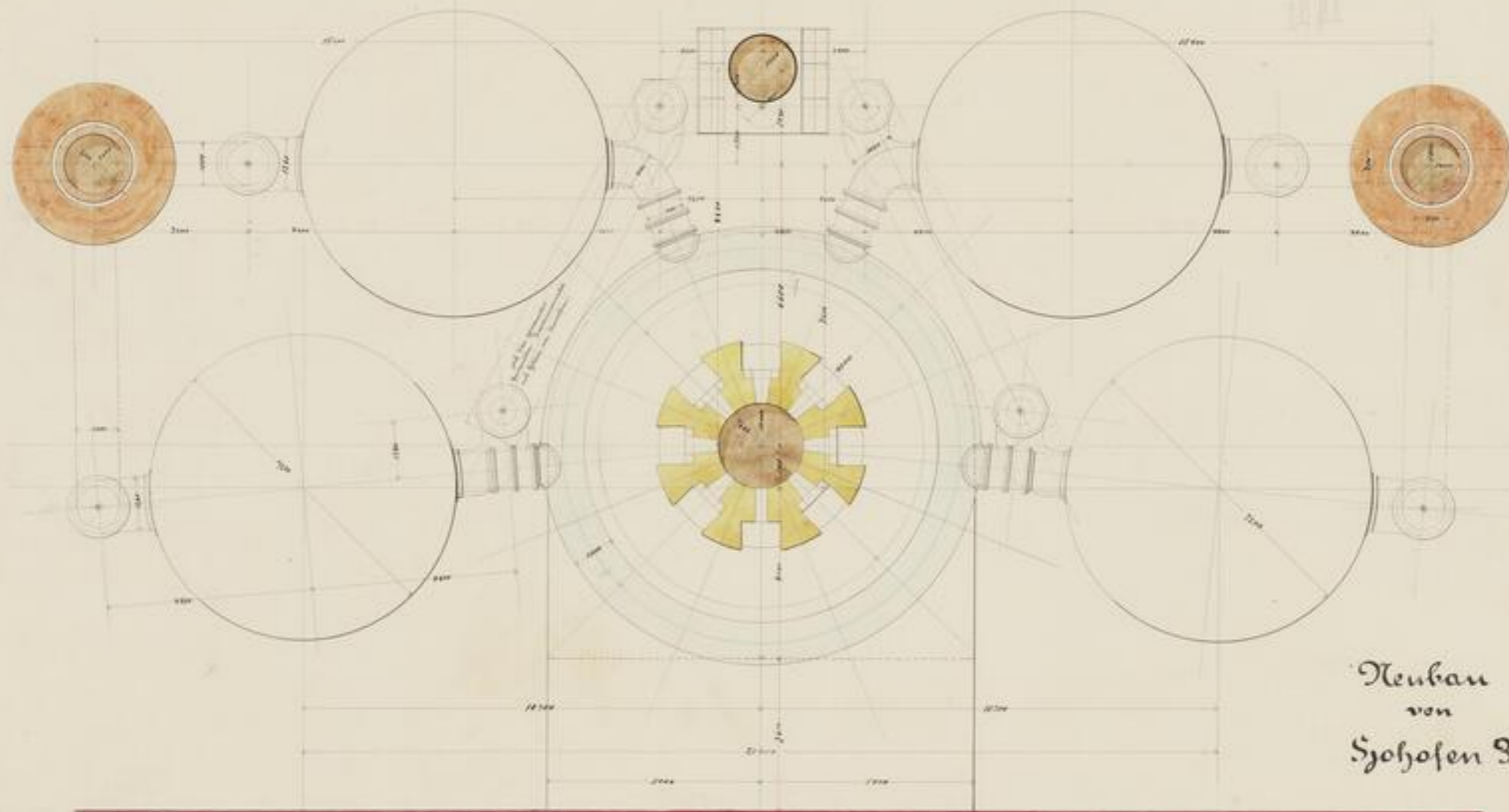
**SLUB**

Wir führen Wissen.

UNIVERSITÄTSBIBLIOTHEK  
FREIBERG



Gewerkschaft Friedrichs Wilhelms Stütze in  
Freisdorf  
1880.



Neubau  
von  
Sjöhofen 3





12  
12  
- 2 -



**SLUB**

Wir führen Wissen.

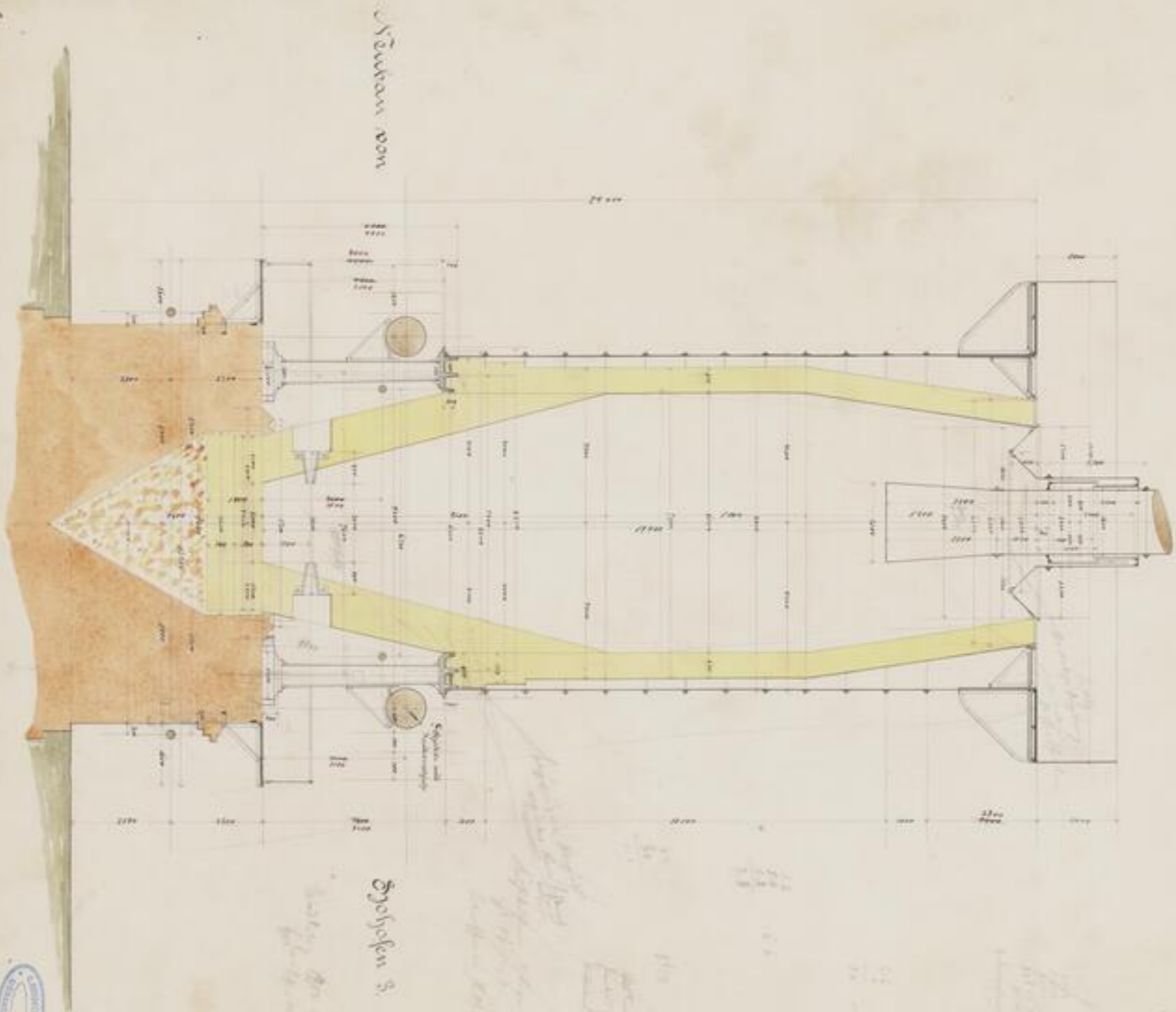
UNIVERSITÄTSBIBLIOTHEK  
FREIBERG





**Geellschaft**  
**Wilhelms - Spitze bei**  
**Stollberg**

1890



*Handwritten notes and calculations in pencil, including numbers like 11, 12, 13, 14, 15, 16, 17, 18, 19, 20, 21, 22, 23, 24, 25, 26, 27, 28, 29, 30, 31, 32, 33, 34, 35, 36, 37, 38, 39, 40, 41, 42, 43, 44, 45, 46, 47, 48, 49, 50, 51, 52, 53, 54, 55, 56, 57, 58, 59, 60, 61, 62, 63, 64, 65, 66, 67, 68, 69, 70, 71, 72, 73, 74, 75, 76, 77, 78, 79, 80, 81, 82, 83, 84, 85, 86, 87, 88, 89, 90, 91, 92, 93, 94, 95, 96, 97, 98, 99, 100.*

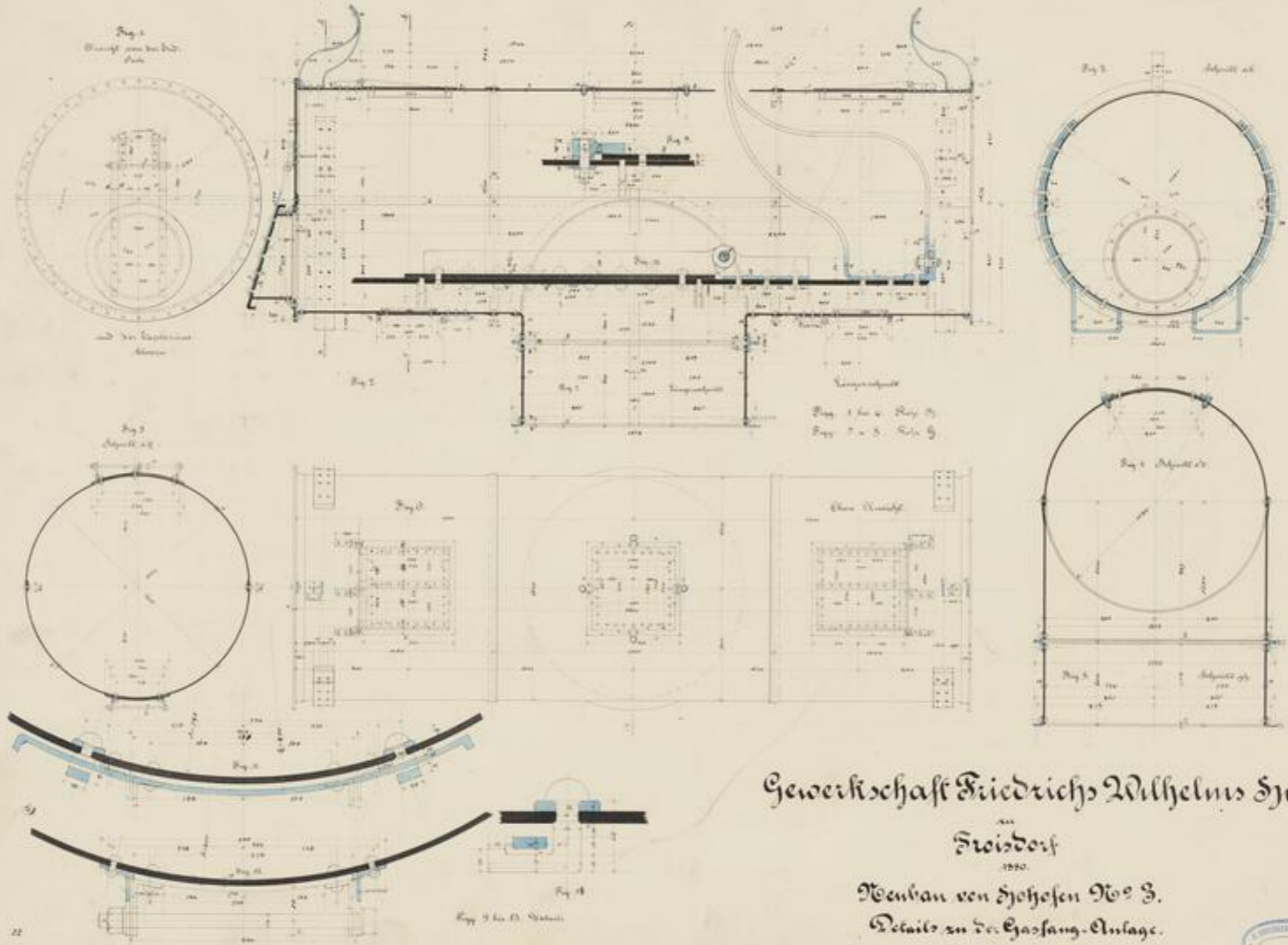


Handwritten text in the upper left corner, possibly a title or address, including the word "Freiburg".



Faint handwritten text in the lower middle section of the page.





Gewerkschaft Friedrichs Wilhelms Hütte

Froisdorf

1880.  
 Bau von Hofmann No 3.  
 Details zu der Gasfang-Anlage.





E 8014  
p. 2  
-22

Gewerkschaft  
 Friedrich-Wilhelms-Hütte  
 Freiberg  
 1850

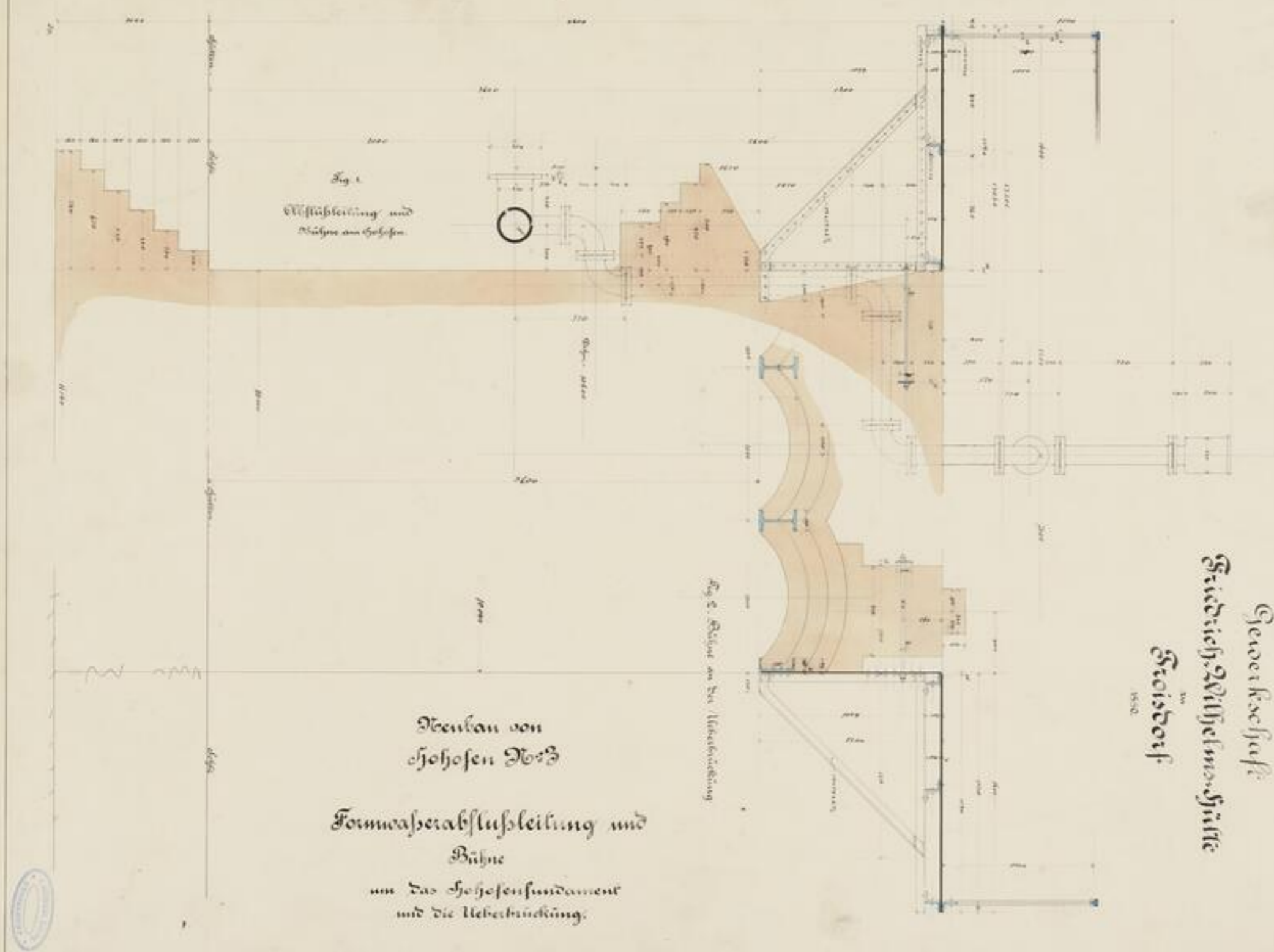
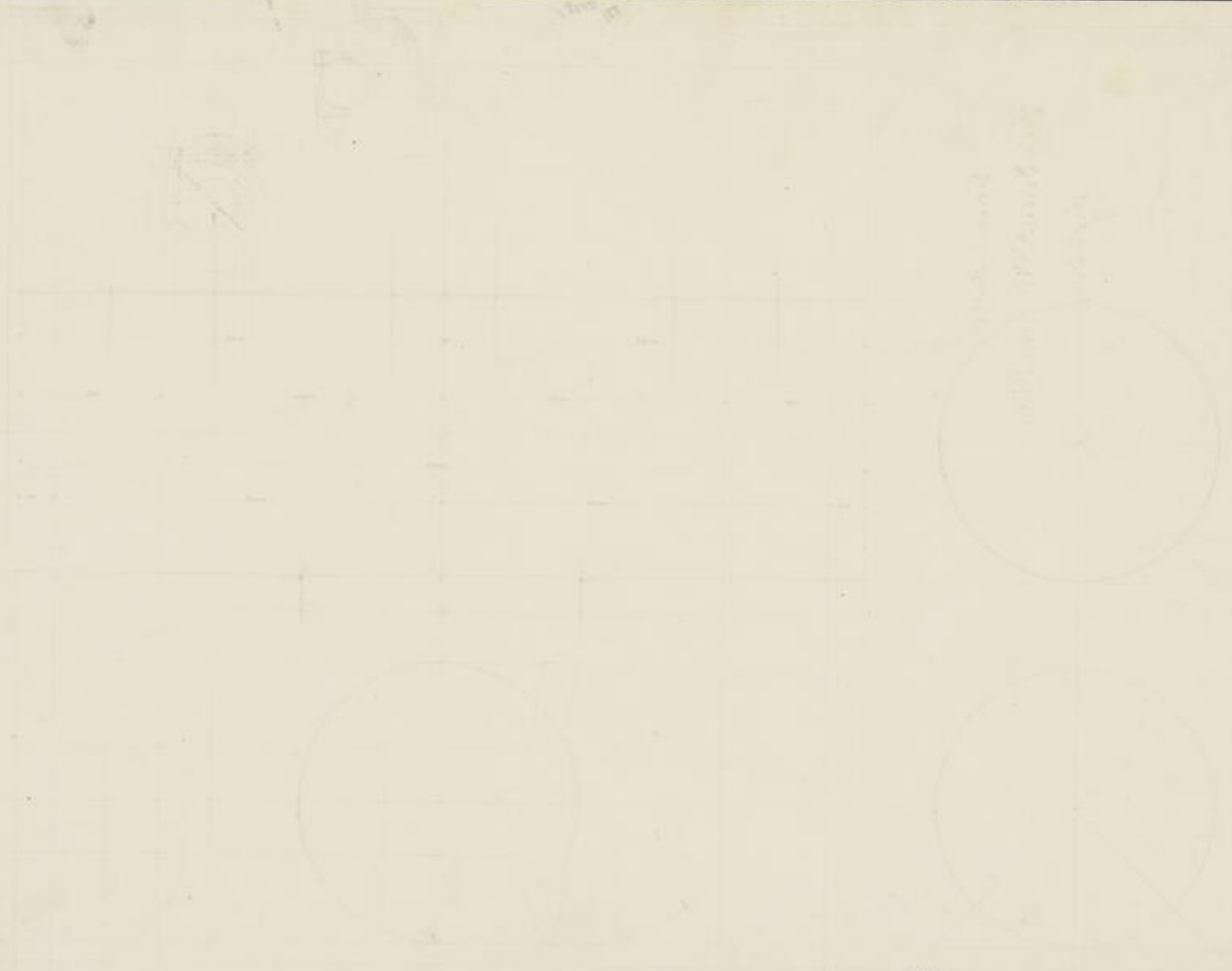


Fig. 1.  
 Wasserleitung und  
 Bühne am Hochofen

Fig. 2. Bühne an der Absetzbrücke

Deuben von  
 Hochofen No. 3  
 Formwasserabflussleitung und  
 Bühne  
 um das Hochofensfundament  
 und die Heberbrücke.






 50714  
 11-21  
 -2-

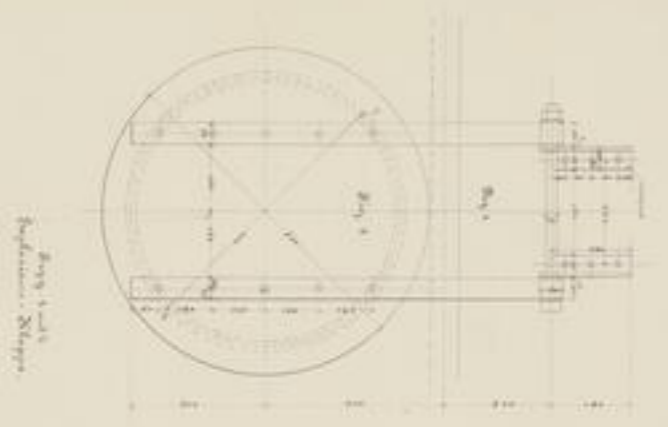
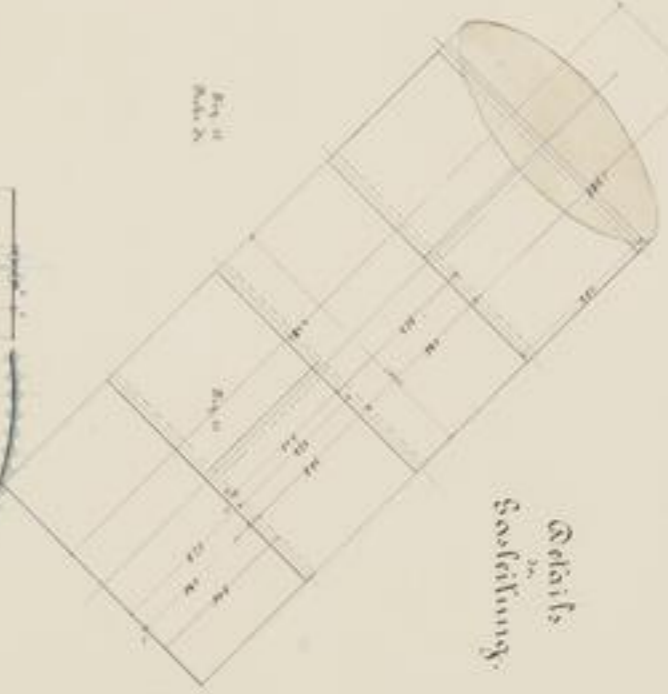


Fig. 1  
Eisenbau-Scheibe



Fig. 2  
Kette



Details  
der  
Saeführung



Fig. 4  
Kette



Fig. 5  
Kette



Fig. 6  
Kette



Fig. 7  
Kette

**Sauerfischerei**  
**Friedrich-Wilhelms-Schlamm**  
**Zeischof**  
1880.

Thierbau  
Aussehen des

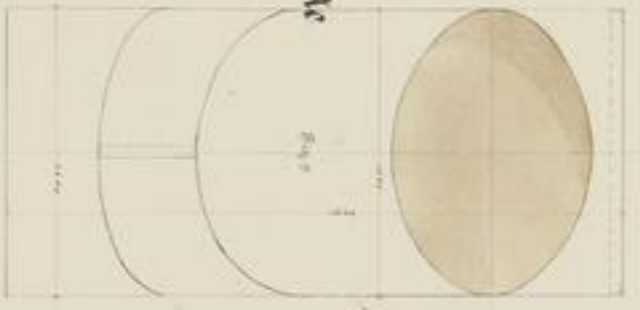


Fig. 8  
Kette

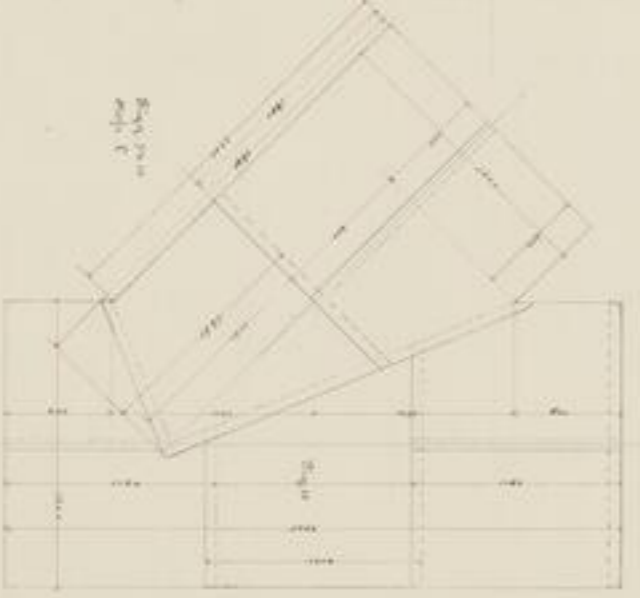


Fig. 9  
Kette



*Faint, illegible handwritten text, possibly bleed-through from the reverse side of the page.*

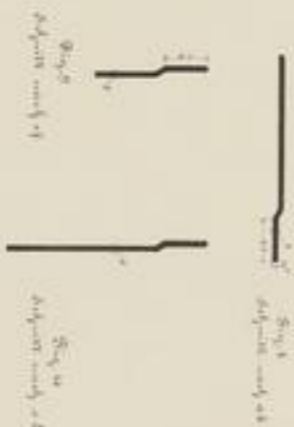


1498  
24. 27  
- 2 -



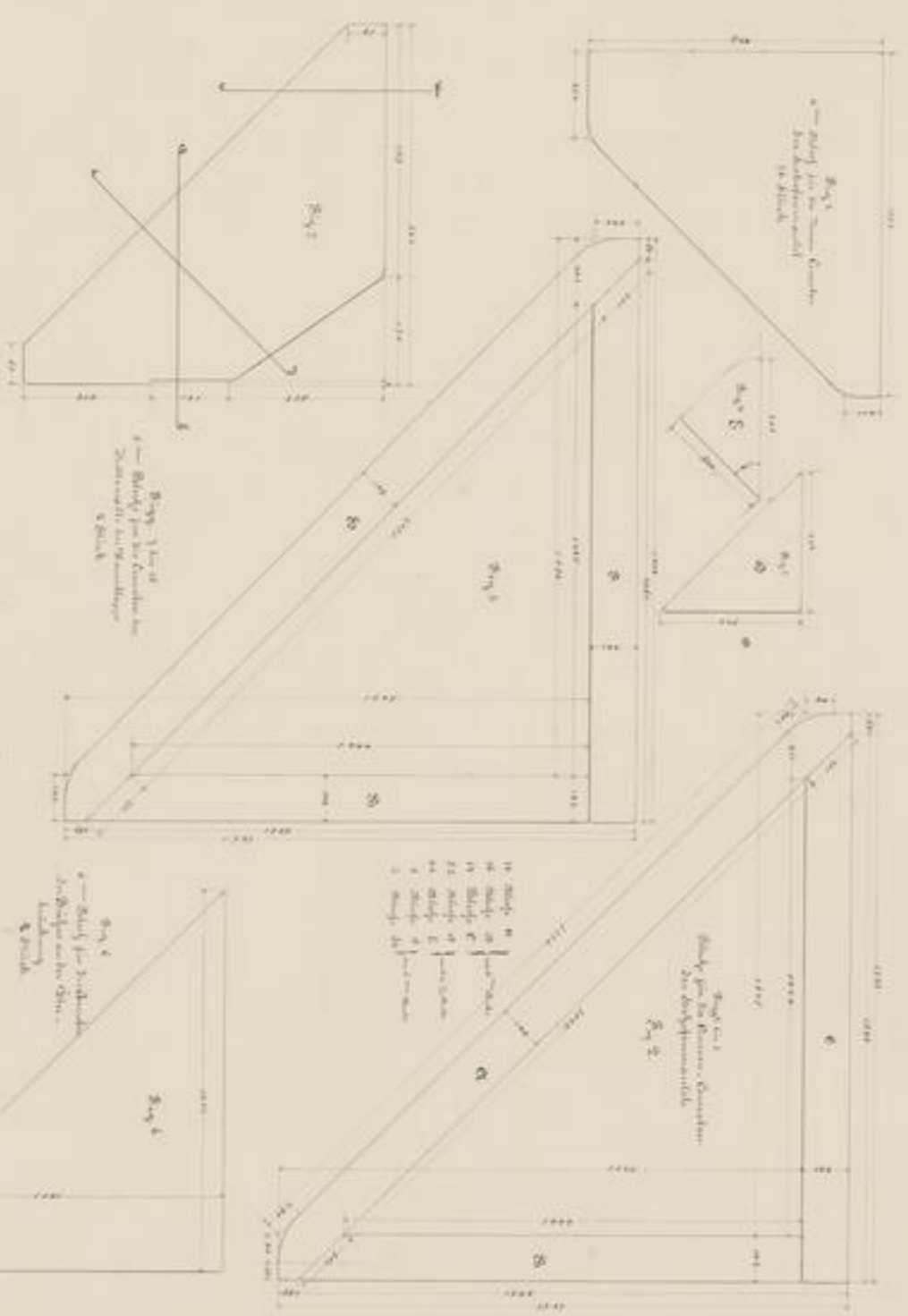
Stecher  
für  
die verschiedenen  
Eisenarten.

Stückzahl  
30:3



Schwerfabrik  
Friedrich-Wilhelms-Säule

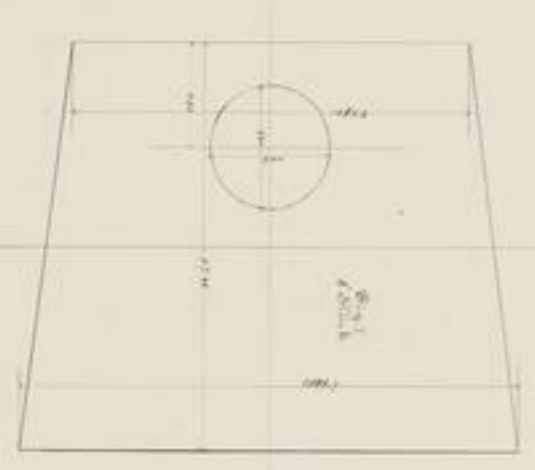
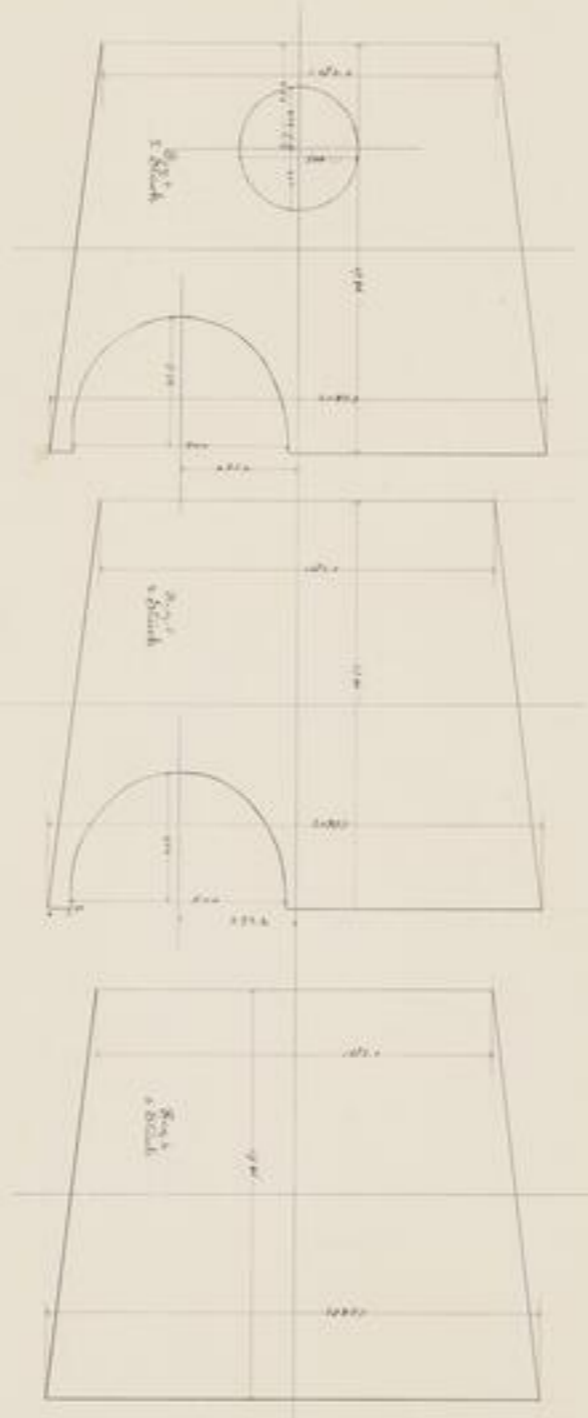
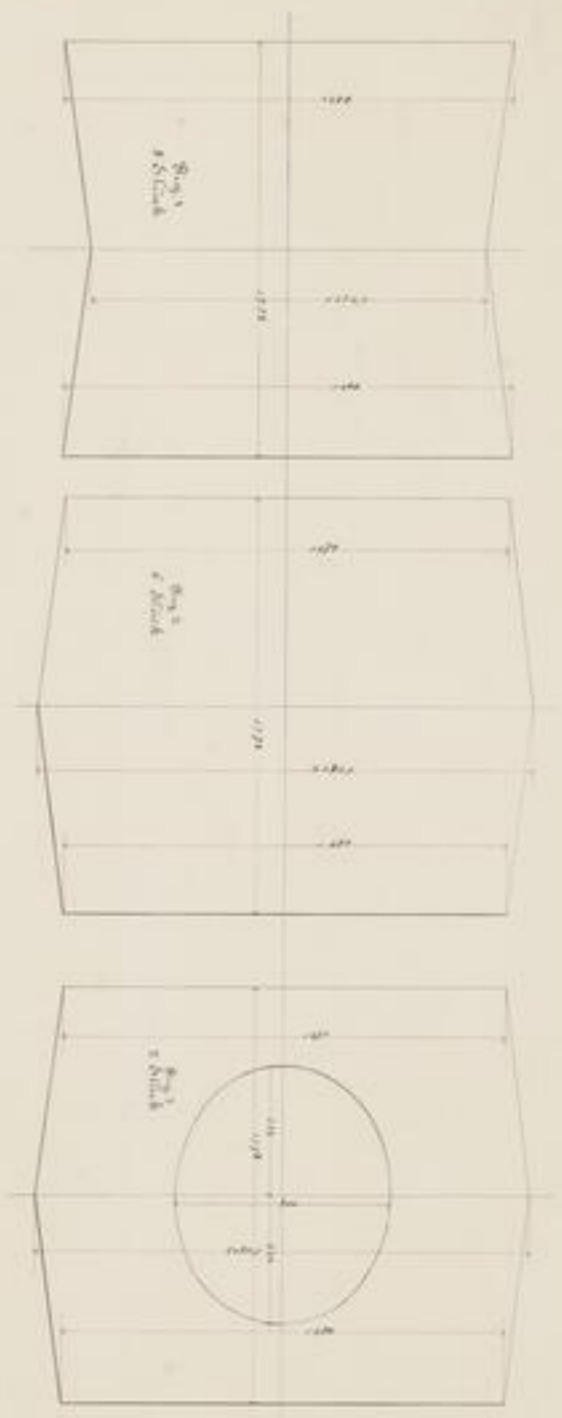
Stückzahl  
1850



Handwritten text, possibly a title or author name, oriented vertically.

Handwritten text, possibly a date or location.

Handwritten text, possibly a library stamp or number.



Gewerkschaft  
**Friedrich-Wilhelms-Gütte**  
 Froisdorf.

1880

Dresden  
 Koblenz No 3

Stück  
 von der Eisenwerkung  
 an der Gütte

Stück  
 von der Eisenwerkung  
 an der Gütte



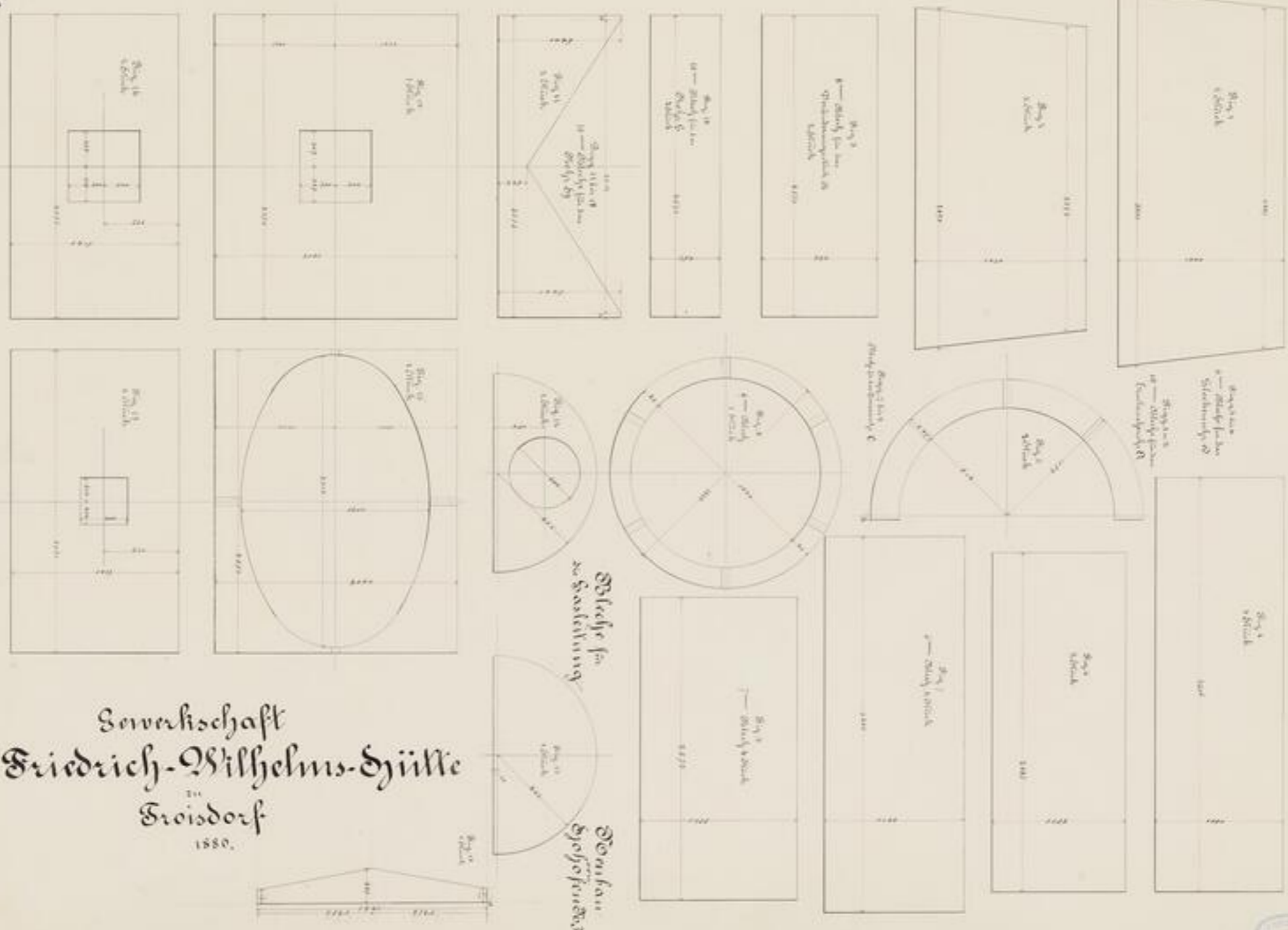
*Faint handwritten text, possibly bleed-through from the reverse side of the page.*

  
TU Bergakademie  
Freiberg  
1824



Handwritten text in German, possibly a title or description, including the words "Hauptstadt" and "Freiburg".

18-07/1  
-25-



Senkerische  
 Friedrich-Wilhelms-Hütte  
 Freisdorf  
 1880.



*Faint handwritten text, possibly bleed-through from the reverse side of the page.*

  
TU BERGAKADEMIE  
FREIBERG  
1871





Bonhan  
Johann  
1850



Fig. 7  
Fig. 8



Fig. 11  
Fig. 12



Fig. 18



Fig. 22

Fig. 23

Gemeinschaft  
Friedrich-Wilhelms-  
Spinnerei  
Goldschmidt  
1880.

Stiftung für die Gasföhrung





86317

H. 2°

-41-

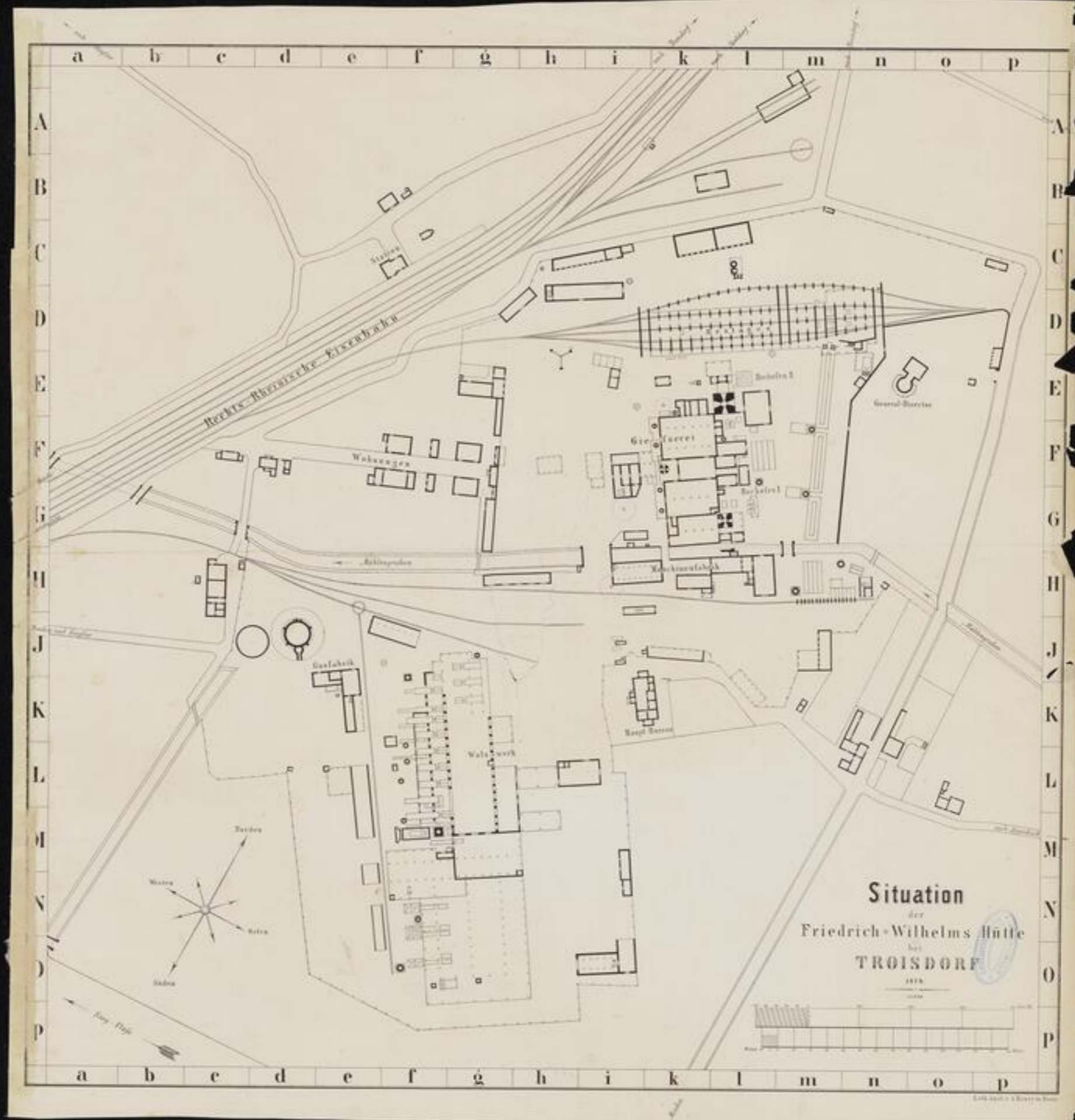


SLUB

Wir führen Wissen.

UNIVERSITÄTSBIBLIOTHEK  
FREIBERG







11457/1

2<sup>o</sup>



SLUB

Wir führen Wissen.

UNIVERSITÄTSBIBLIOTHEK  
FREIBERG

