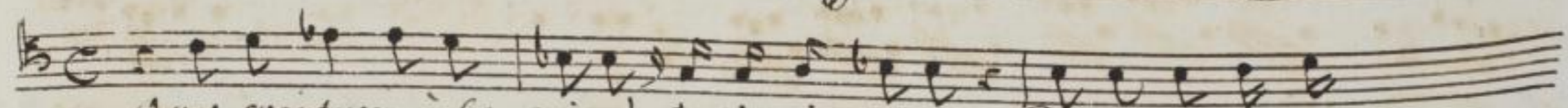
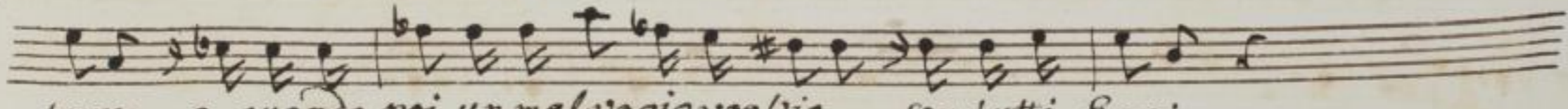
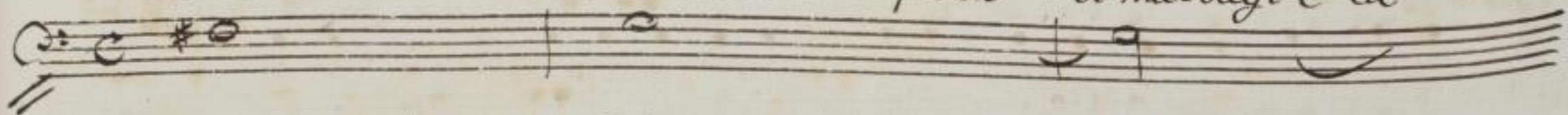


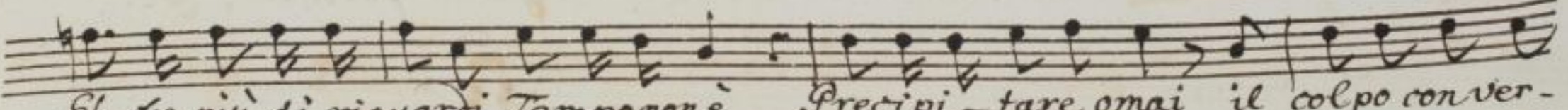
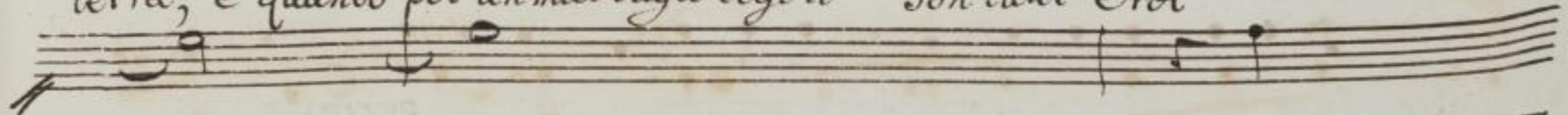
Scena IV. Massimo solo.



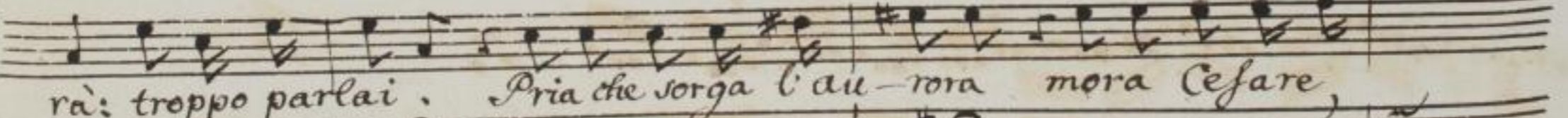
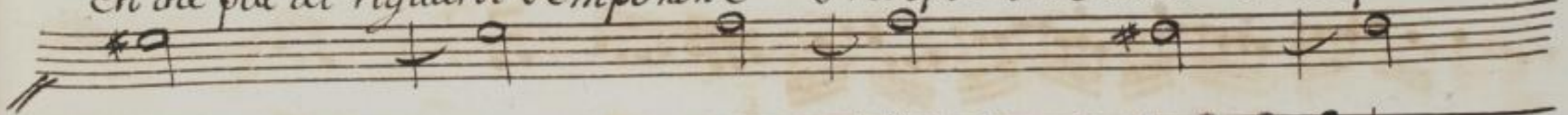
Qual sventura è la mia! Così ri - piena Di malvagi è la



terra, e quando poi un malvagio voglio son tutti Eroi



Eh die più di riguardi Tempo non è Precipi - tare omai il colpo con ver -



rà: troppo parlai. Pria che sorga l'au - roa mora Cesare,

