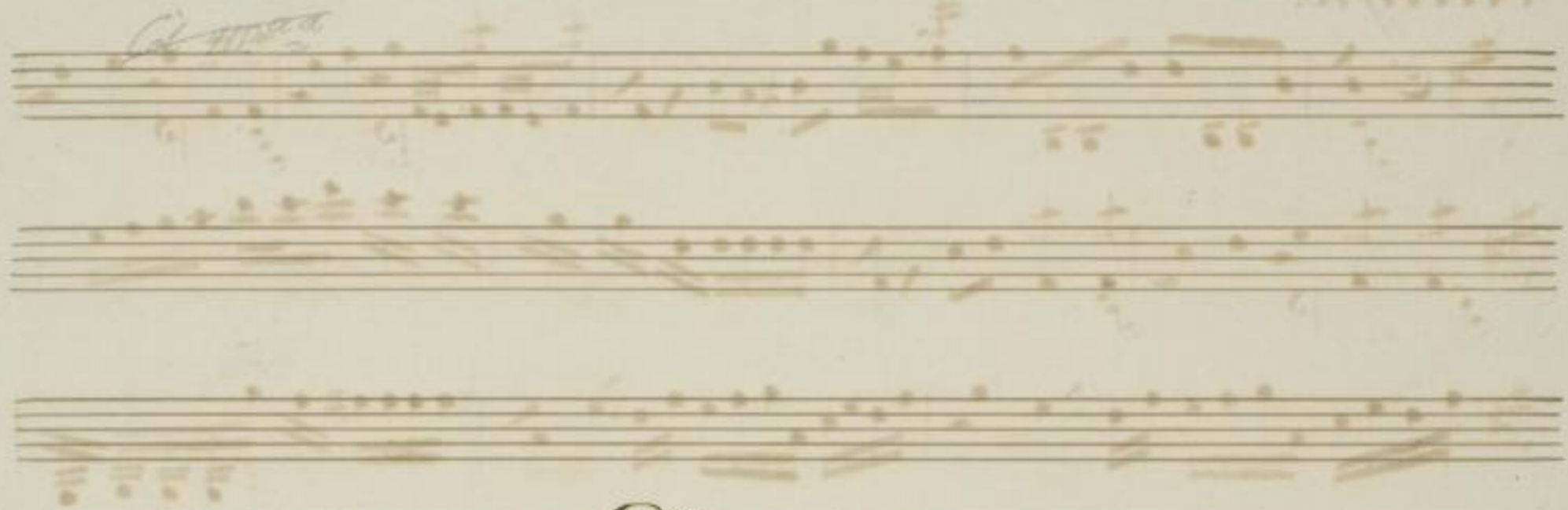


Allegro



Concerto

di

Sign. Hesse.



Violino primo.

Mus. 2477-0-3a



1

Allegro.

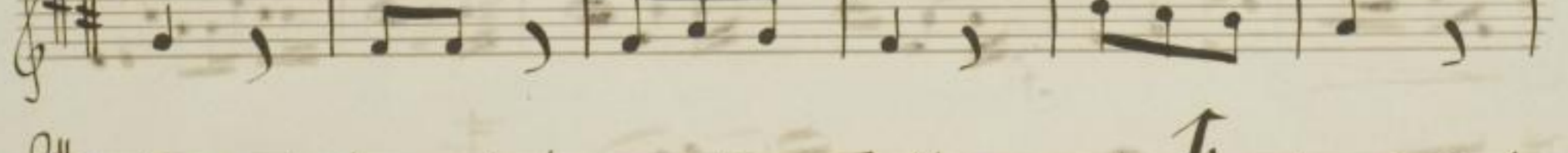
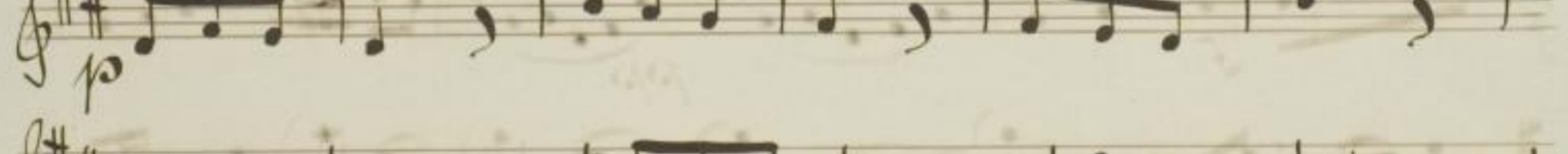
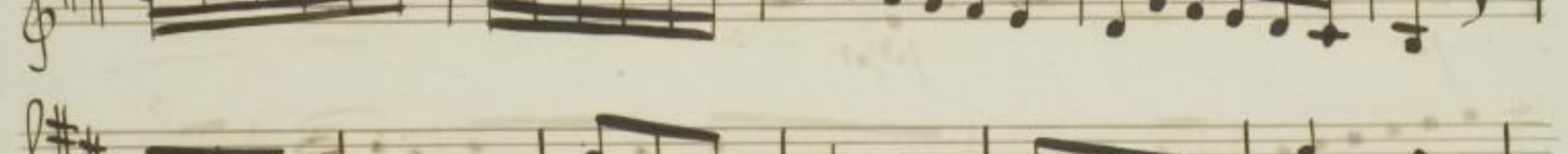
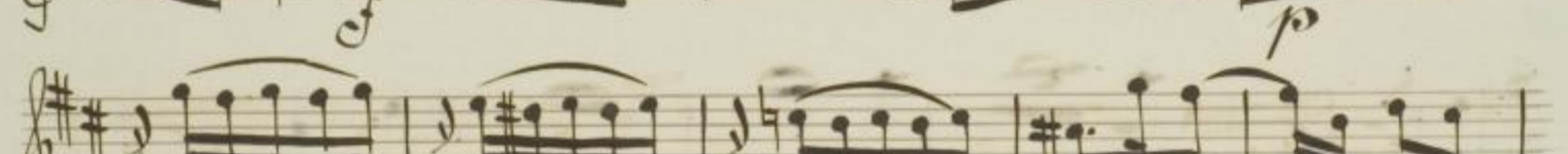
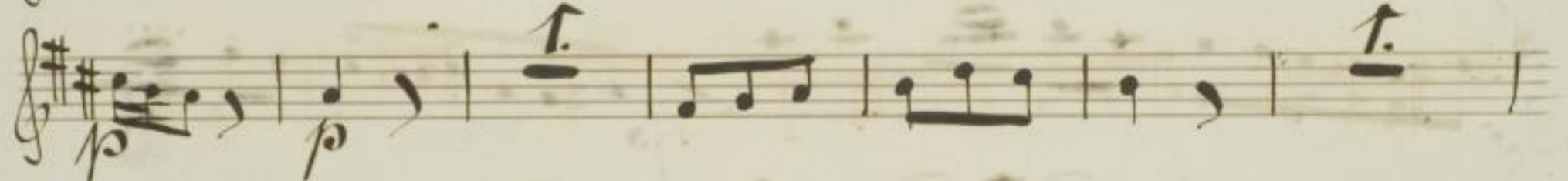
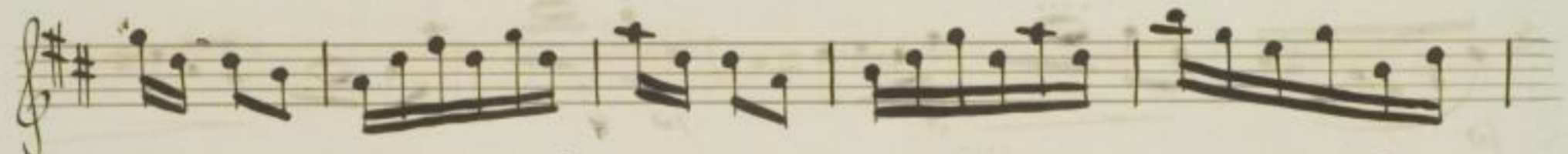
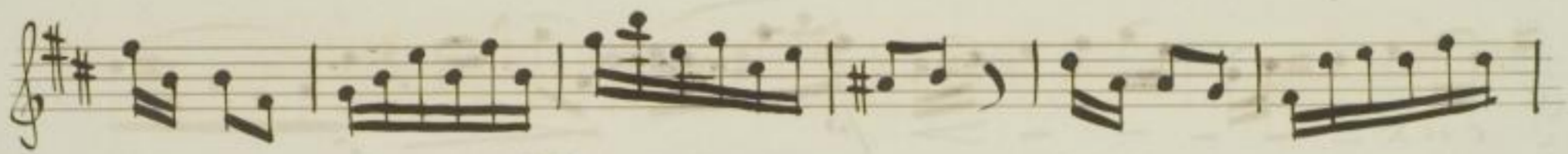
A handwritten musical score consisting of 12 staves. The music is written in a treble clef with a key signature of one sharp (F#). The score includes various musical notations such as notes, rests, and accidentals. Dynamics markings include *f*, *p*, *mp*, *cresc.*, and *dim.*. There are also performance markings like *tr* (trills) and *acc.* (accents). The score concludes with a double bar line and a signature in the bottom right corner.

V.S.

Handwritten musical score on a single page, featuring ten staves of music. The score is written in G major (one sharp) and includes various musical notations such as treble clefs, notes, rests, and dynamic markings like *p* and *cres:*. A tempo marking *Moderato.* is present on the sixth staff. The page is numbered 4 at the bottom center.

A handwritten musical score consisting of 12 staves. The music is written in a single system with a key signature of one sharp (F#) and a common time signature (C). The notation includes various note values, rests, and dynamic markings. The dynamics include *p* (piano), *cres.* (crescendo), *pp* (pianissimo), and *cl* (crescendo). There are also several slurs and phrasing marks throughout the score. The handwriting is in dark ink on aged, slightly yellowed paper.

Allegro. $\text{F}\sharp\text{F}\sharp$ $\frac{15}{8}$



Handwritten musical score on ten staves. The music is in treble clef with a key signature of two sharps (F# and C#). The notation includes various note values, rests, and dynamic markings such as "1." and "3.". The piece concludes with a double bar line and a fermata on the final note of the tenth staff.

V.S.

A handwritten musical score on ten staves. The music is written in a treble clef with a key signature of two sharps (F# and C#). The score is divided into two sections: the first section is marked with a '1.' and the second with a '2.'. The notation includes various rhythmic values, slurs, and dynamic markings such as *p* (piano) and *cresc.* (crescendo). The manuscript shows signs of age, with some ink bleed-through and staining.

Op. III. 2

Concerto

di

Sign. Hesse.

Violino secondo.

Mus. 2477-0-3a



9

Allegro.

Handwritten musical score for a piece in G major, marked *Allegro*. The score consists of 12 staves of music. The first staff begins with a treble clef, a key signature of one sharp (F#), and a common time signature (C). The music is written in a single system. The notation includes various rhythmic values such as eighth and sixteenth notes, as well as rests. Dynamic markings like 'p' (piano) and 'mf' (mezzo-forte) are present throughout the piece. The score concludes with a double bar line and repeat dots.

A handwritten musical score on ten staves. The music is written in a treble clef with a key signature of two sharps (F# and C#). The notation includes various note values, rests, and dynamic markings such as *p* (piano) and *cresc.* (crescendo). The score concludes with the initials *V.S.* at the bottom right.

Handwritten musical score on page 12, featuring multiple staves of music in G major and 3/4 time. The score includes various musical notations such as notes, rests, dynamics (p, f, cresc.), and articulation marks. A tempo marking "Moderato." is present in the middle section.

A handwritten musical score on 12 staves, likely for a piano. The music is written in treble clef with a key signature of one sharp (F#). The score includes various musical notations such as notes, rests, and dynamic markings. Key annotations include:

- Staff 1:** A crescendo marking (*cresc.*) with a hairpin symbol.
- Staff 2:** A first ending bracket (*1.*) at the end of the staff.
- Staff 3:** A *tr* (trill) marking above a note.
- Staff 4:** A *p* (piano) dynamic marking.
- Staff 5:** A *tr* (trill) marking above a note.
- Staff 6:** A *tr* (trill) marking above a note.
- Staff 7:** A *p* (piano) dynamic marking.
- Staff 8:** A *pp* (pianissimo) dynamic marking.
- Staff 9:** A *pp* (pianissimo) dynamic marking.
- Staff 10:** A *pp* (pianissimo) dynamic marking.
- Staff 11:** A *p* (piano) dynamic marking.
- Staff 12:** A *p* (piano) dynamic marking.

There are also several blue ink annotations, including a *tr* marking on the second staff and a *tr* marking on the fifth staff. The page number 43 is visible at the bottom center.

Allegro.

Handwritten musical score for a piece in D major, 5/8 time, marked *Allegro*. The score consists of 14 staves of music. The notation includes treble clefs, a key signature of two sharps (F# and C#), and a time signature of 5/8. The music features a variety of rhythmic patterns, including eighth and sixteenth notes, and rests. Dynamic markings such as *p* (piano) and *f* (forte) are present. There are also first and second endings marked with *1.* and *2.*

A handwritten musical score consisting of 12 staves. The music is written in a treble clef with a key signature of two sharps (F# and C#). The notation includes various rhythmic values, slurs, and dynamic markings. The first seven staves feature melodic lines with some rests and slurs. The eighth and ninth staves contain more complex, rapid passages with slurs and a piano (*p*) dynamic marking. The tenth and eleventh staves continue the melodic development. The twelfth staff concludes with a double bar line and a second ending bracket labeled '2.'. The manuscript shows signs of age, including some ink bleed-through from the reverse side.

V.S.

Handwritten musical score on a single page, featuring eight staves of music. The notation includes various rhythmic values, slurs, and dynamic markings such as *p* and *cresc:*. The music concludes with a fermata on the eighth staff.

Four empty musical staves at the bottom of the page, showing faint ghosting of the notation from the previous staves.

Cat. III. 2

[Faint musical notation on staves]

Concerto

di

Sign. Masse.



Basso.

Mus. 2477 - 0 - 3a



17

Allegro.

21.

Fe:

18

Musical staff with notes and clef.

18. Fl: Musical staff with notes and clef.

Musical staff with notes and clef.

14. Fl: Musical staff with notes and clef.

Musical staff with notes and clef.

Musical staff with notes and clef.

Musical staff with notes and clef.

Musical staff with notes and clef.

V.S.

Empty musical staff.

Empty musical staff.

Empty musical staff.

Moderato.

f

p

f

ff

cresc. — — — — — *f p*

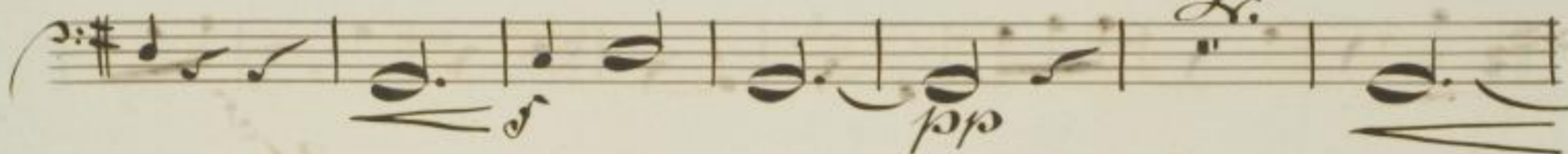
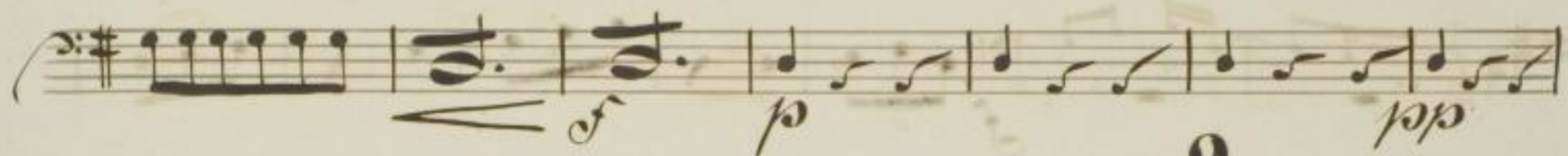
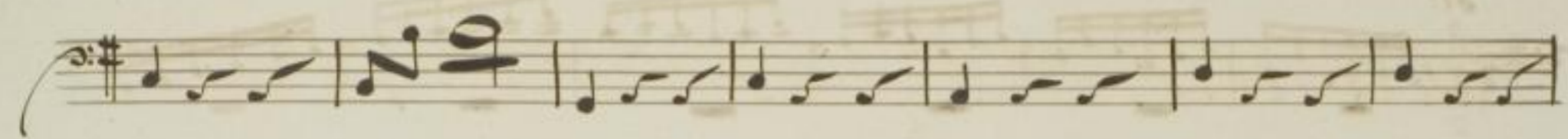
6.

p

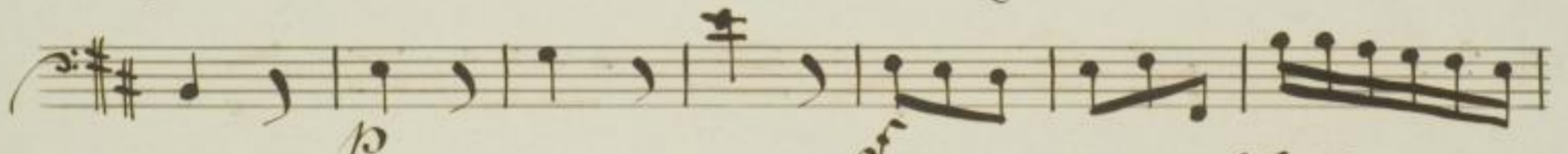
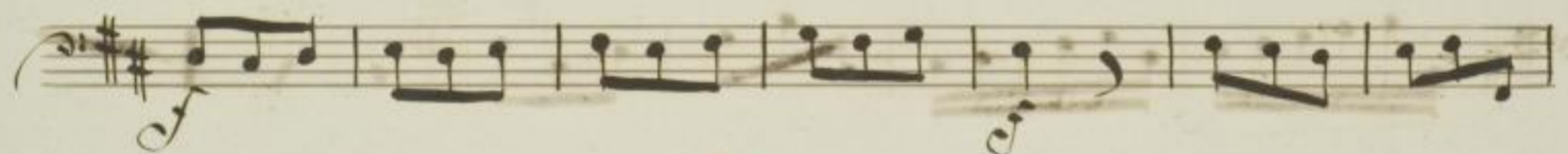
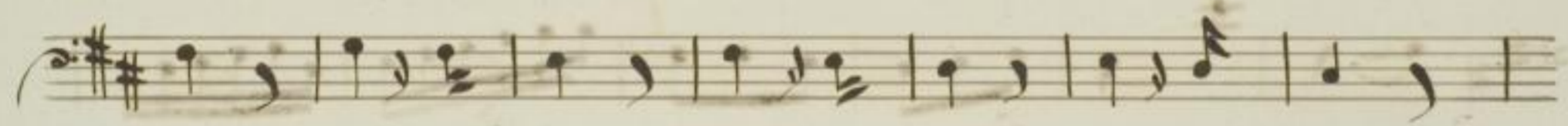
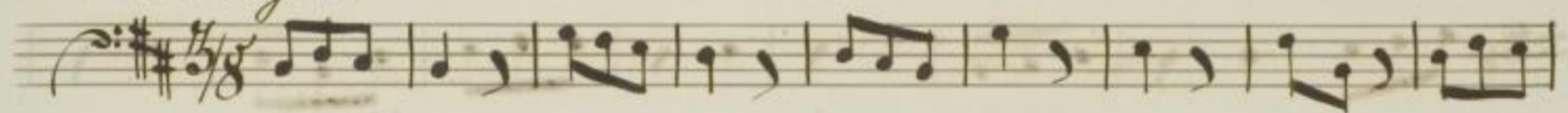
f

f

p



Allegro.



V.S.

Fl:

26.

p

cresc:

Col. III. 20
Musical notation on staves

Concerto

col

Flauto, due Violini e Basso

di

Sign. Hasse.



Flauto.

Allegro. *Viol:*

p

Fz: Solo

f

p

p *mf*

p *p*

p *p*

p

cres:

Viol:

p

Fl. Solo

p *mf*

p

p *p* *p* *p* *p*

p

cresc:

dimi *p*

V.S.

Solo

p *p* *p* *cres.* *p* *p*

Viol:

Moderato.

Viol:

A handwritten musical score on aged paper, featuring ten staves of music. The score is written in treble clef with a key signature of one sharp (F#). The notation includes various rhythmic values, slurs, and dynamic markings such as *p* (piano) and *cresc.* (crescendo). Specific instrument parts are labeled: *Fl.* (Flute) on the fourth staff, *Viol.* (Violin) on the eighth staff, and *v.s.* (viola) on the tenth staff. The music is dense and expressive, with many notes beamed together and some slurs spanning across measures. The paper shows signs of age, including some staining and a slightly yellowed tone.

Handwritten musical score for strings and woodwinds. The score consists of ten staves. The first staff is for Flute (Fl.). The second staff is for Violin (Viol.). The third and fourth staves are for Violoncello (Vcllo.). The fifth and sixth staves are for Viola (Viola). The seventh staff is for Violin (Viol.). The eighth staff is for Flute (Fl.). The ninth and tenth staves are for Violoncello (Vcllo.). The music is in G major and 3/8 time. It features various rhythmic patterns, including eighth and sixteenth notes, and rests. Dynamics such as *p* (piano) and *f* (forte) are indicated. The score concludes with a double bar line.

Allegro.

Handwritten musical score for strings, consisting of two staves. The music is in G major and 3/8 time. It features a rhythmic pattern of eighth notes. The score concludes with a double bar line.

Handwritten musical score for violin solo, measures 1-8. The music is written on eight staves in treble clef with a key signature of two sharps (D major). The first staff begins with a treble clef and a key signature of two sharps. The word "Solo" is written above the second staff. The notation includes various rhythmic values, slurs, and dynamic markings. The eighth staff ends with a double bar line.

Viol:

V.S.

Fl.

Handwritten musical score for Flute (Fl.) on page 30. The score consists of 13 staves of music in G major (one sharp). The notation includes various rhythmic values, slurs, and dynamic markings such as 'p' and 'f'. The music is written in a single system across the page.

Viol:

Fl:

Viol:

This page contains a handwritten musical score for Violin and Flute. It consists of 12 staves of music. The top two staves are for the Violin (Viol:), and the next two staves are for the Flute (Fl:). The bottom two staves are for the Violin (Viol:). The music is written in a key signature of two sharps (F# and C#) and a 6/8 time signature. The notation includes various rhythmic values, slurs, and dynamic markings such as *f* and *p*. The score is written in a clear, legible hand.

V.S.

Handwritten musical score on five staves. The music is written in treble clef with a key signature of two sharps (F# and C#). The notation includes various rhythmic values such as eighth and sixteenth notes, as well as rests. There are several dynamic markings, including a 'p' (piano) in the first staff and a 'f' (forte) in the fourth staff. The piece concludes with a double bar line and a fermata-like flourish.

Seven staves of faint, handwritten musical notation, likely bleed-through from the reverse side of the page. The notation is mostly illegible due to its lightness and the age of the paper.