

STROSSEN - BAUE.

Silber-Bergwerk zu St. Andreasberg am Harz.

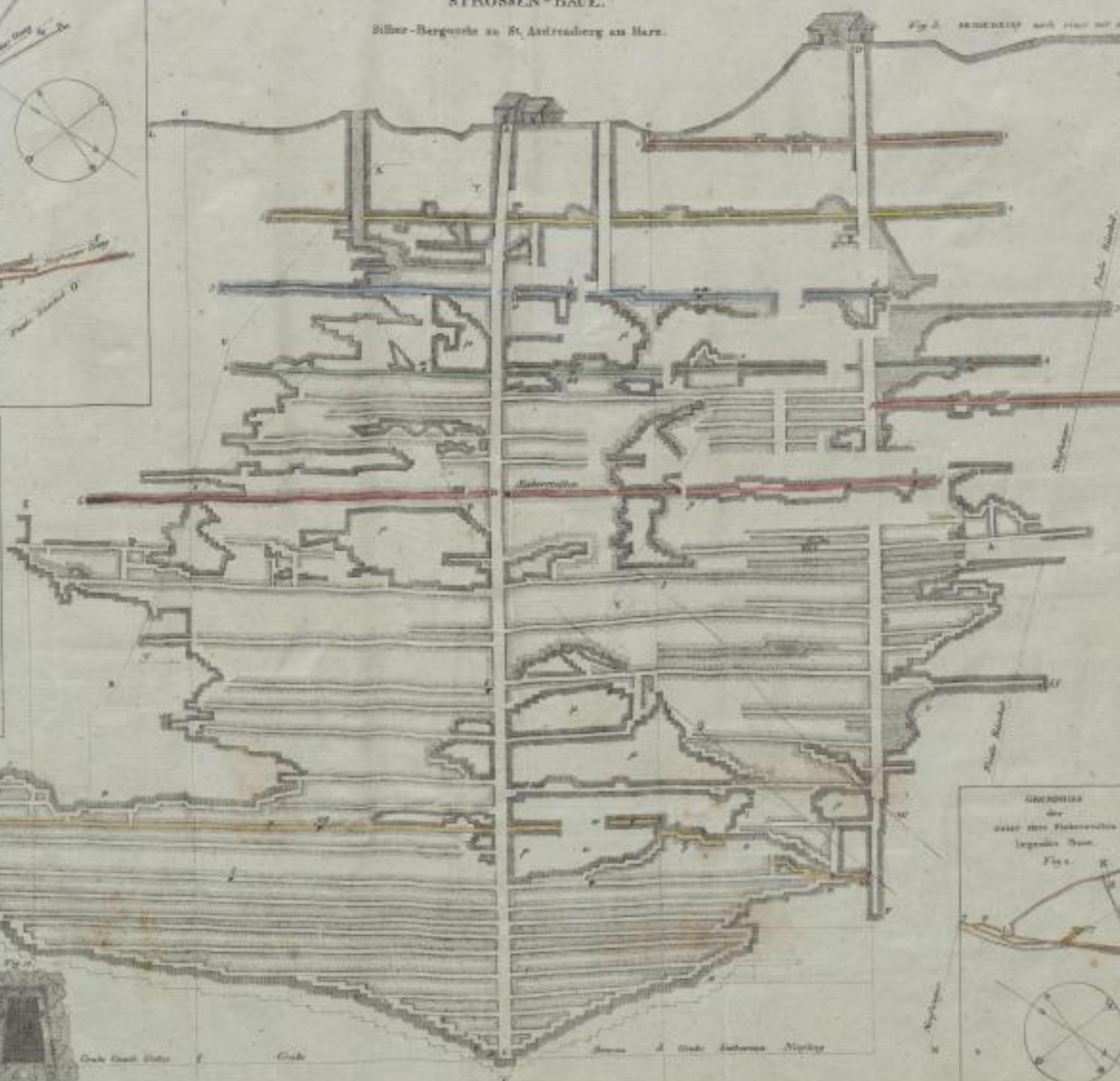
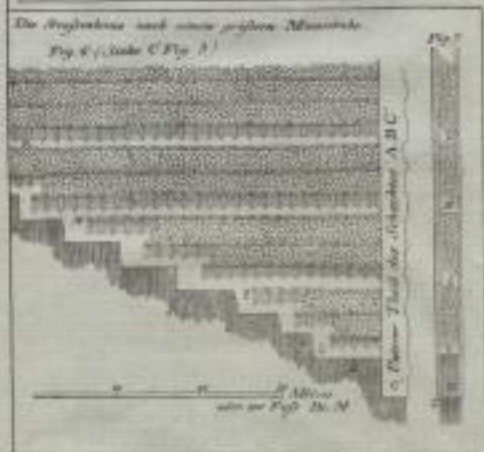
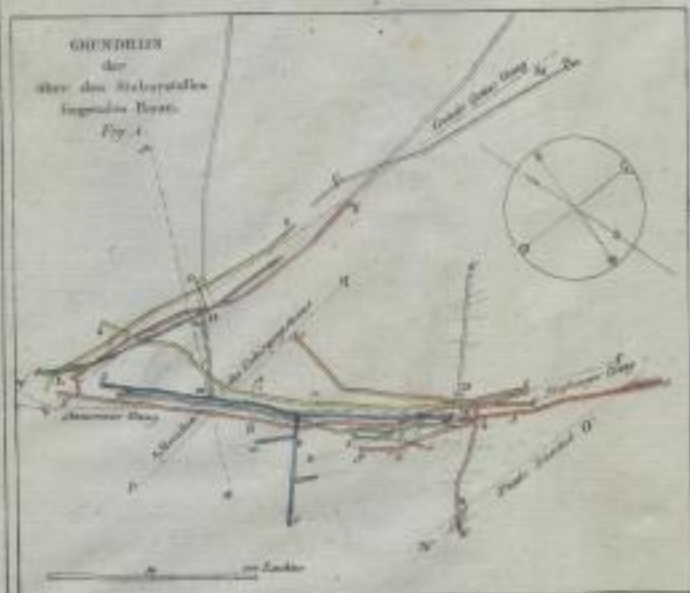
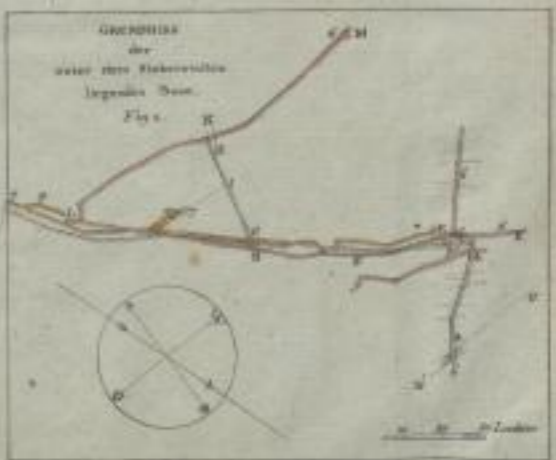
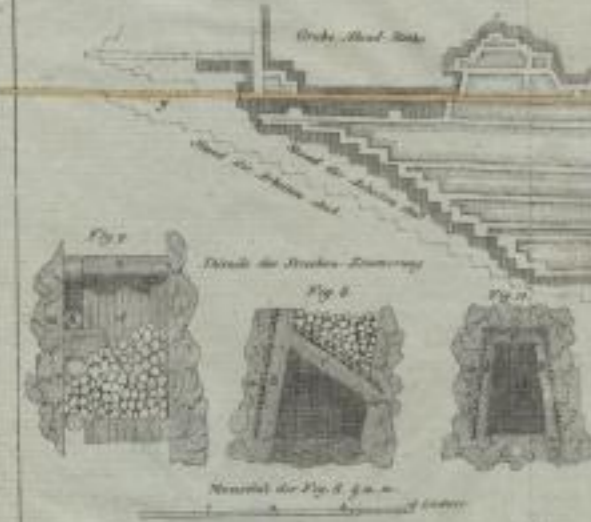


Fig. 3. GRUNDRISS nach einer mit dem Stollen VE Fig. 1 parallelen Ebene.



Legende
 ———— Kalkstein
 ———— Sandstein
 ———— Gneis
 ———— Granit

Maststab der Fig. 3 u. 4



Verlag v. Neumann, Neudamm