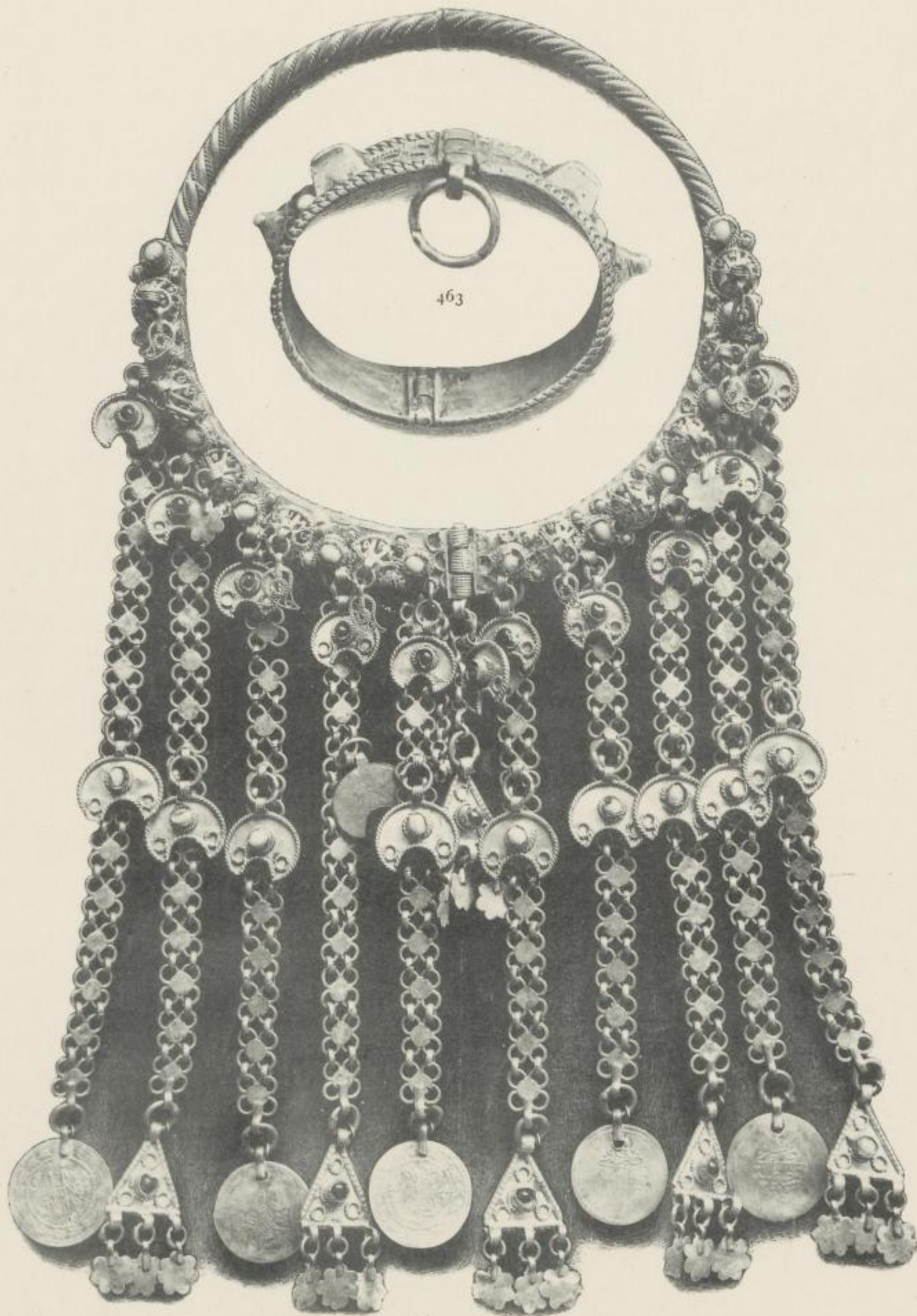


462



464

73.—462. Bracelet, Usuar; one of a pair; silvered metal, hinged with projecting ornament and filigree. Syrian. I.M. 1532-73.
463. Bracelet, Shalim Hirluch, one of a pair; silvered metal; alternate knobs and upright bars, hooked together with pins for fastening. Syrian. I.M. 1542-73. 464. Necklet, Towk (Tawk); thick silvered metal; twisted wire, ornamented with filigree bosses, with chains suspending crescents, coins, and other pendants, with setting of red and blue beads. I.M. 1545-73.

3268

