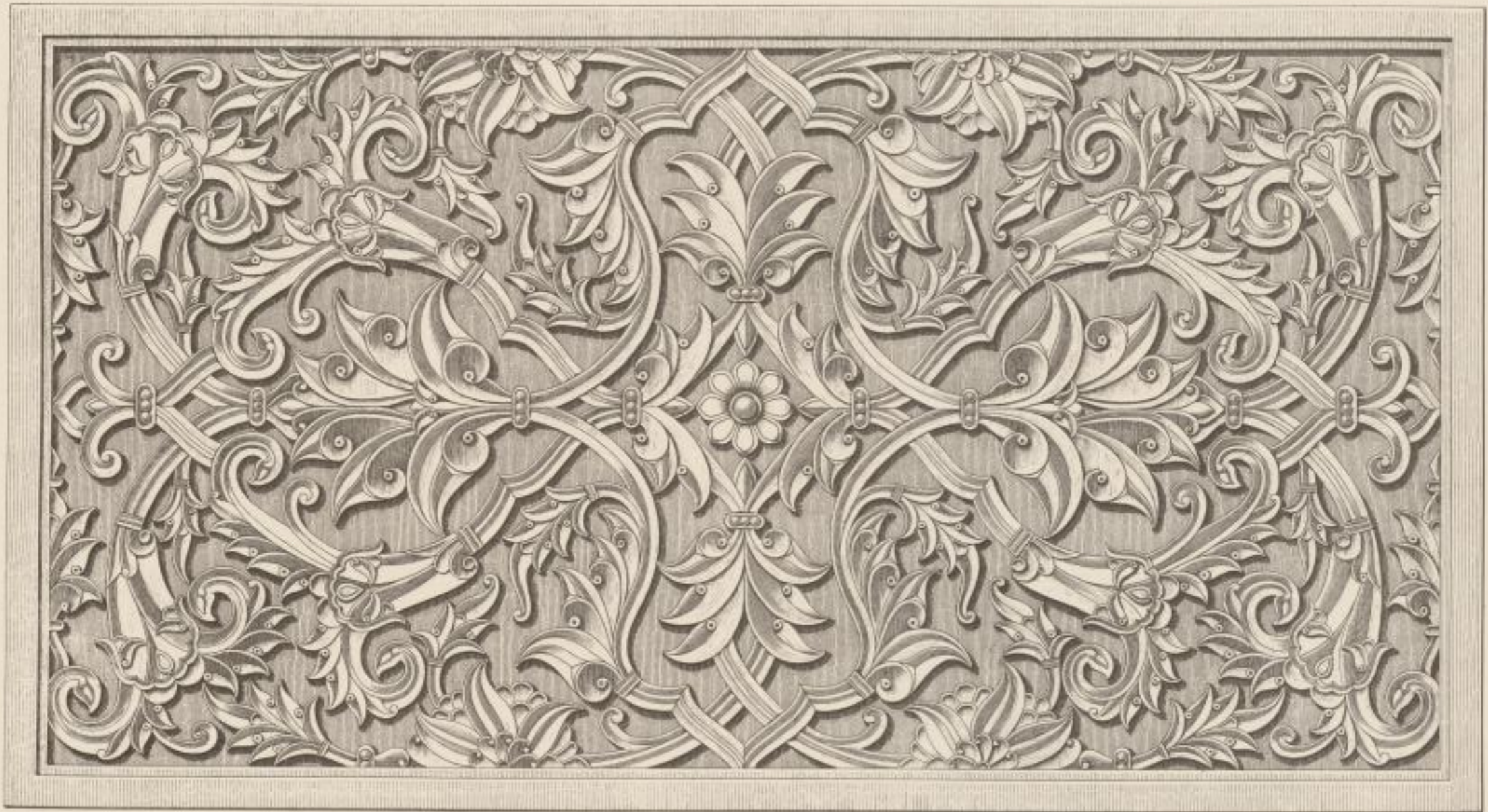




FROM THE MAZD OF KHAN DALAH KHAN AT QWALICK.

PART VIII.
WALL AND SURFACE DECORATION.



(See Section)



3532
JEYPORE PORTFOLIO OF
ARCHITECTURAL DETAILS.

PREPARED UNDER THE SUPERVISION OF COLONEL R. S. JAYNE, INDIAN STAFF CORPS, ENGINEER TO THE JEYPORE STATE,
AND LALA RAM RAKHSHI, DEPARTMENT, JEYPORE,
AND PHOTO-LITHOGRAPHED BY W. GRIGGS, DANOVER STREET, PIERCEMAN, LONDON.

Hiers Mill, del.

PLATE 49.