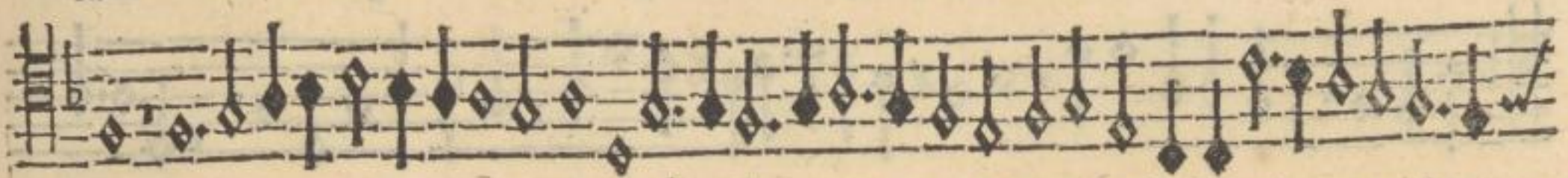
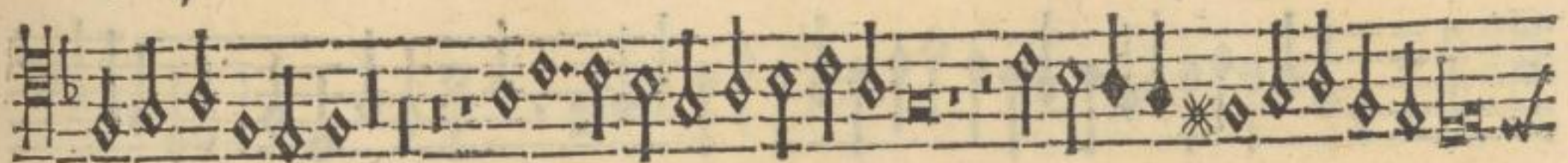




san-cti spi-ri-tus, qui ex-  
pat-er-  
nis, Christe fi-li Dea-



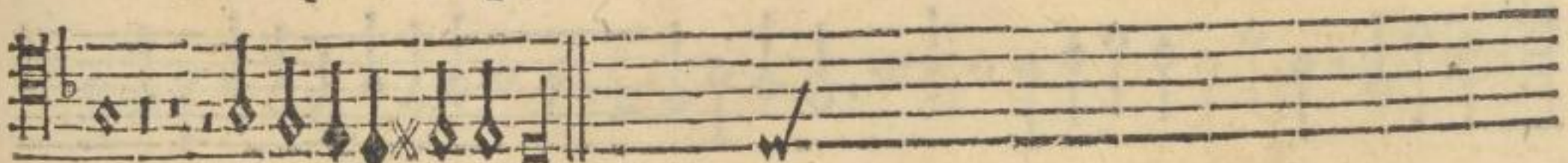
g-i-ni-  
Christe fili De-i, & Mari-  
æ uir-



ginis, tu nos ab hos-te pro-  
tege-  
iij



ab hos-te pro-  
tege, & ho-  
ra mor-  
tis sus-  
ci-



pe-  
sus-  
cipe.

c 2