

## IV. THE UNITS OF CONSTRUCTION OF THE ENGINE AND THEIR FUNCTIONS

### (1) General

There are different designs of internal-combustion engines, depending on the intended use. An important design feature is the number of cylinders in an engine.

Today single-cylinder engines are only used for motor-cycles and small tractors. These engines operate both on the two-stroke and on the four-stroke cycle (Fig. 38).

Two-cylinder engines are available both in unitised construction (Fig. 39) and as V-engines (Fig. 40).

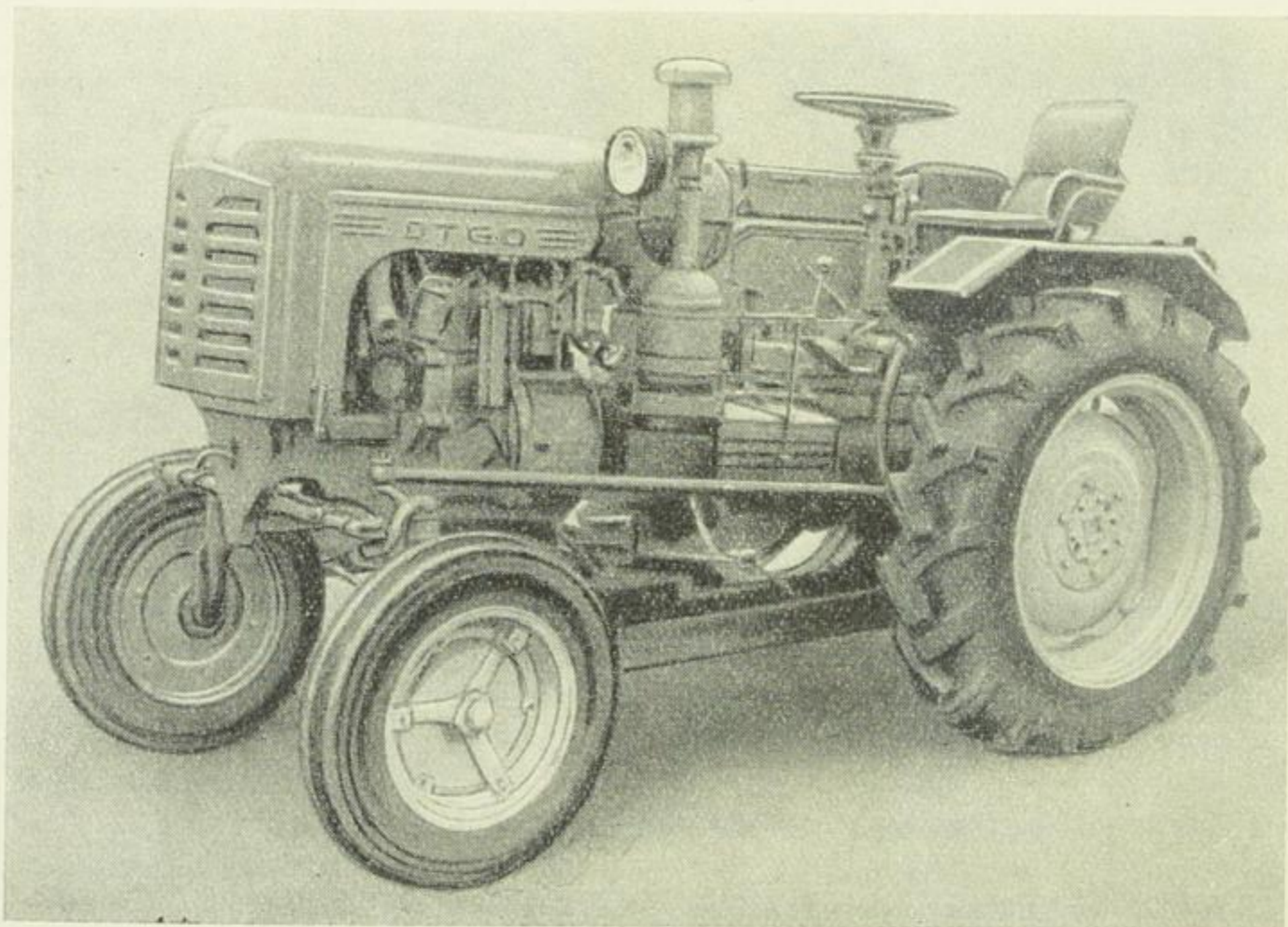


Fig. 38. Wheeled tractor with one-cylinder four-stroke engine (Type: DT-20 / one-cylinder four-stroke engine / 18 h.p. / 1,600 r.p.m. – Manufacturer: USSR)