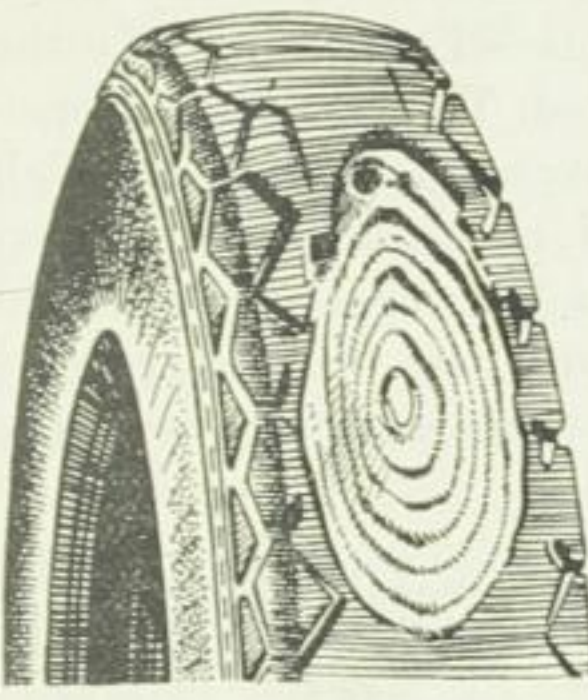


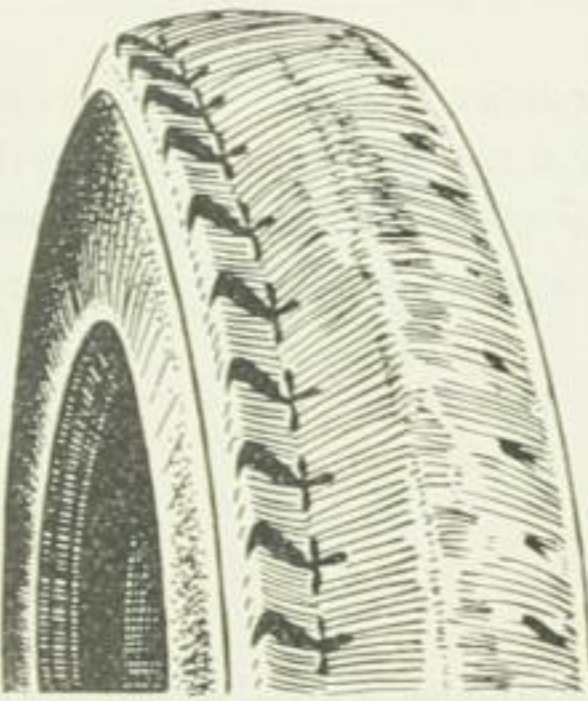
Figure	Defect	Cause
--------	--------	-------



Damage due to blocking wheels

This fault may have various causes. The tractor must be towed in jacked-up condition

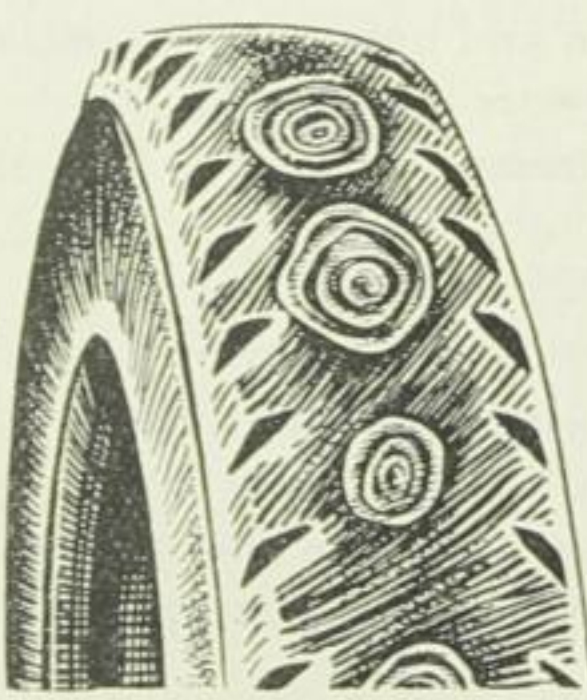
Fig. 285 D



One-sided wearing of the tread

Incorrect camber angle; for adjusting the camber see page 205

Fig. 285 E



Several heavily worn spots distributed over the whole tread

Wheel wobbles or steering knuckle distorted. Wheel nuts are not uniformly screwed down

Fig. 285 F