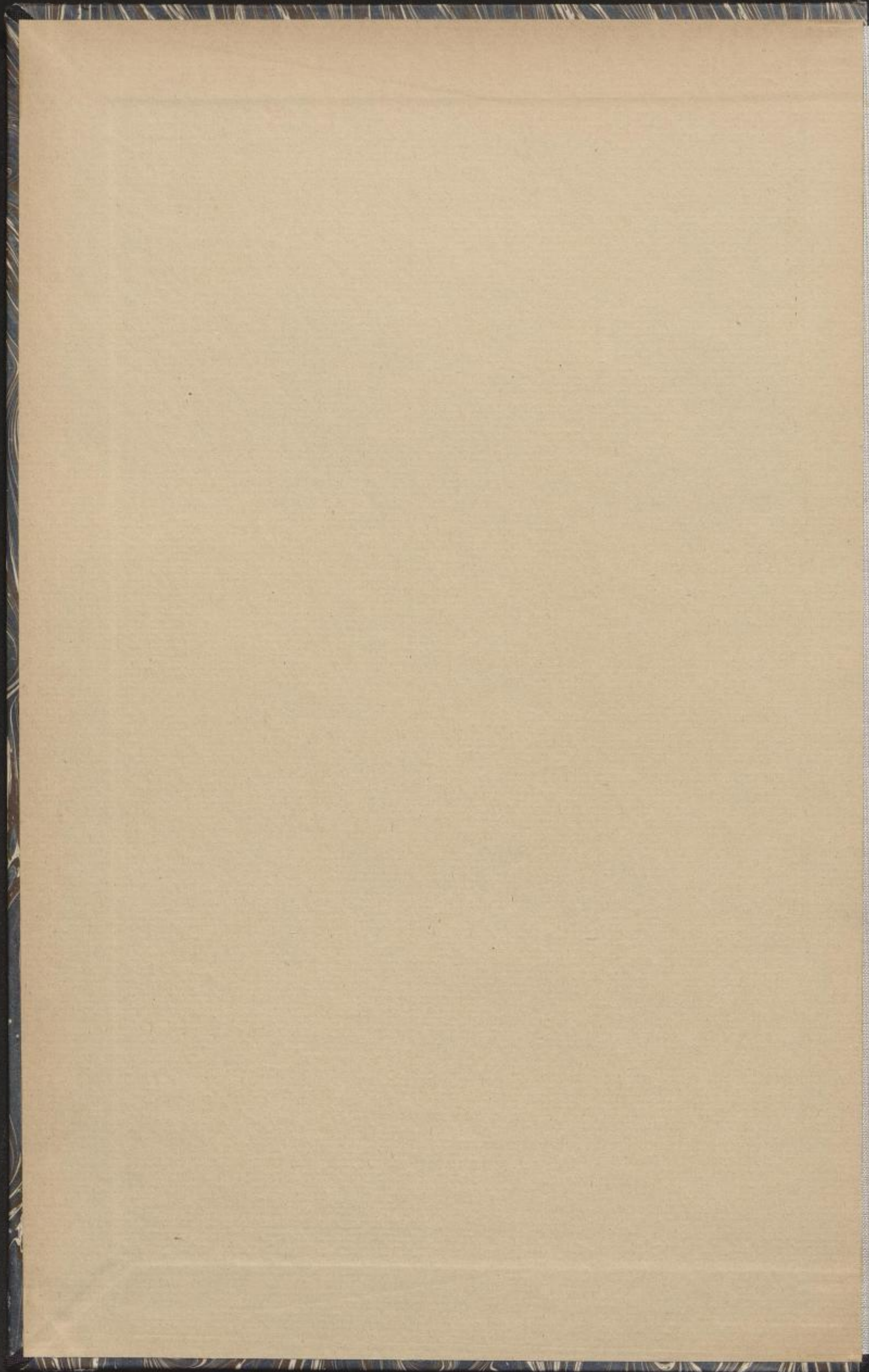


II,8.47

Krebs, Joh. Ludw.  
2 figurirte Choräle.  
1743  
(Autograph) ✓











Rorale. Flauto am 3. u. 4. u. 5. Trompette. Organo  
con Pedale  
J. L. Krebs

This page contains a handwritten musical score for a chorale. The score is written on aged paper and consists of several systems of staves. The top system includes a flute part and a trumpet part. The middle systems feature a complex organ part with multiple voices. The bottom system shows a continuation of the organ part. The notation includes various rhythmic values, accidentals, and dynamic markings. The handwriting is in a cursive style typical of the 18th or 19th century.



Handwritten scribbles at the top of the page.

A handwritten musical score on aged paper, consisting of six systems of music. Each system contains two staves: a treble clef staff on top and a bass clef staff on the bottom. The notation includes various note values (quarter, eighth, sixteenth notes), rests, and accidentals (sharps and naturals). The music is written in a historical style, likely from the 17th or 18th century. The paper shows signs of age, including some staining and discoloration.

Soli Deo Gloria. 25. Nov. 1743.



Corale. von Jo. B. Bach. Geist. Kind. Chor. Lust. a 4. Oboe. 2. Partie  
J. L. Fre

This image shows a page of handwritten musical notation for a chorale by Johann Sebastian Bach. The score is written on four staves. The top staff is for the Oboe 2 part, and the bottom staff is for the basso continuo. The music is in G major (one sharp) and 3/4 time. The notation includes various rhythmic values such as eighth and sixteenth notes, as well as rests and dynamic markings like 't' for trillo. The handwriting is in a cursive style typical of the 18th century. There are some faint blue ink markings on the right side of the page, possibly from a library or archival stamp.



Clavier e Pedale  
Trebs



Allegro!

Soli Deo  
Gloria





