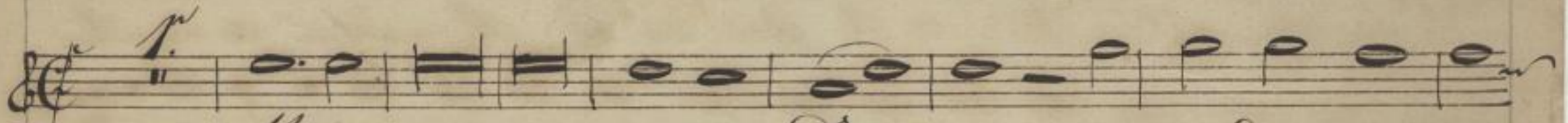


Musica Sacra.

Orly. Lapsus.

Tenore 1^{mo}

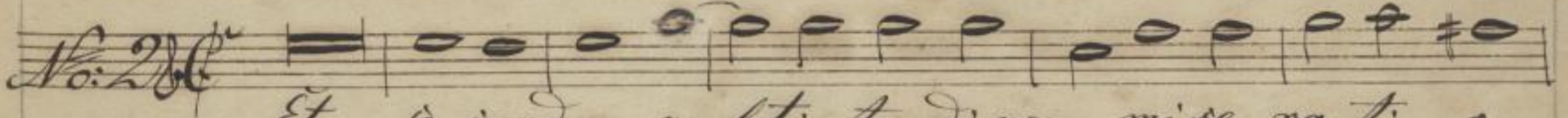
Miserere.



Mi-se-re-re mei De-us, se-cundum magnam



mi-seri cordi-am tu-am.



Et se-cundum multi-tu-dinem mise-ra-ti-o-



num tua-rum, de-le, in-i-qui-ta-tem meam.



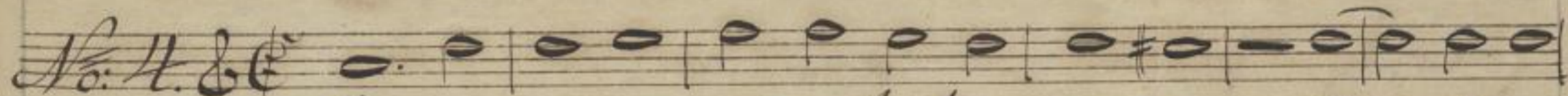
Amplius la-vame ab in-i-qui-ta-te



mea, et a pec-cato meo et a pec-ca-to



me-o mun-da-me.



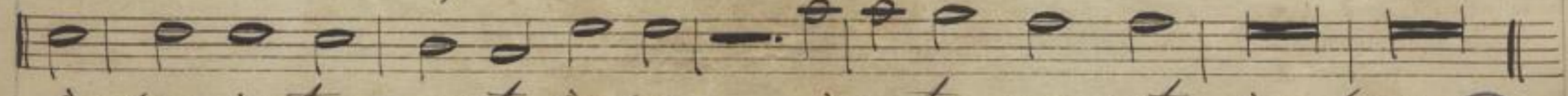
Quoniam in-i-qui-tatem meam, Quoniam



in-i-qui-tatem meam e-go cog-no-scō,



et pec-catum me-um, con-trame est



sem-per, con-trame est sem-per, con-trame est sem-per.

Mus. 1068 - E - 501

