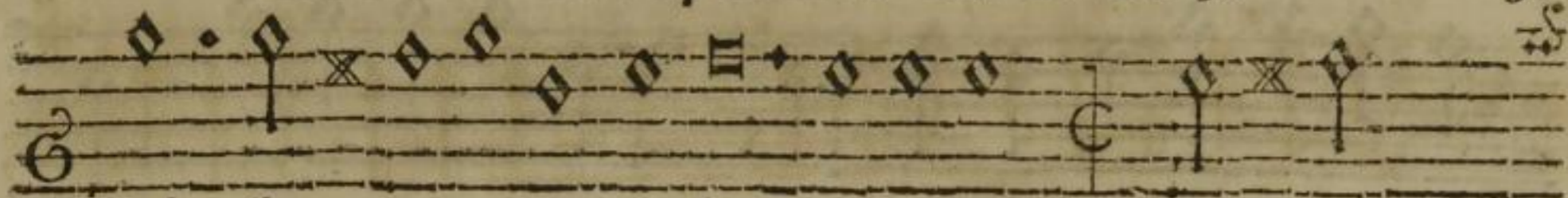


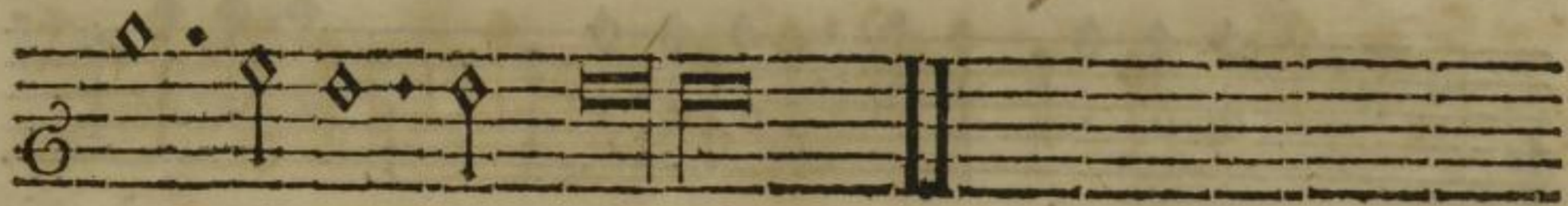
Cantus I & Superioris Chori ab 8.



*Submisse*

*forte*

wol len wir singen/ vnd lo ben dei ne Macht/ vnd

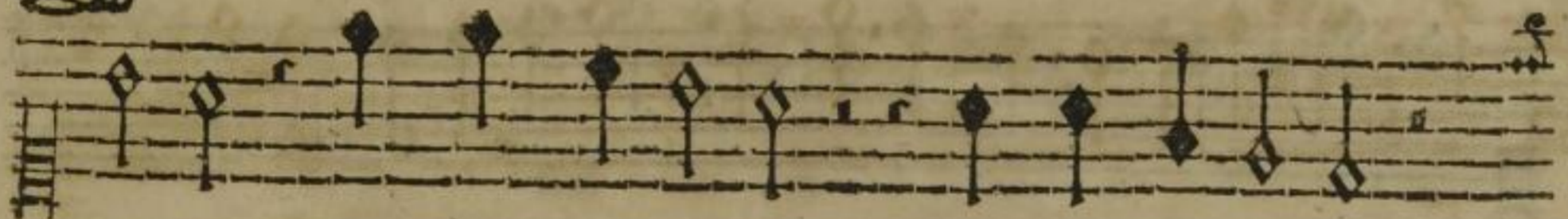


lo ben dei ne Macht.



21.

**H**ERR wie lang wil es mein so gar ver ges sen/ wie lang ver



birgstu ij

wie lang ver birg stu



H

ij

dein Anthe für mir/



vnd mich äng

sten mich äng

sten mich äng