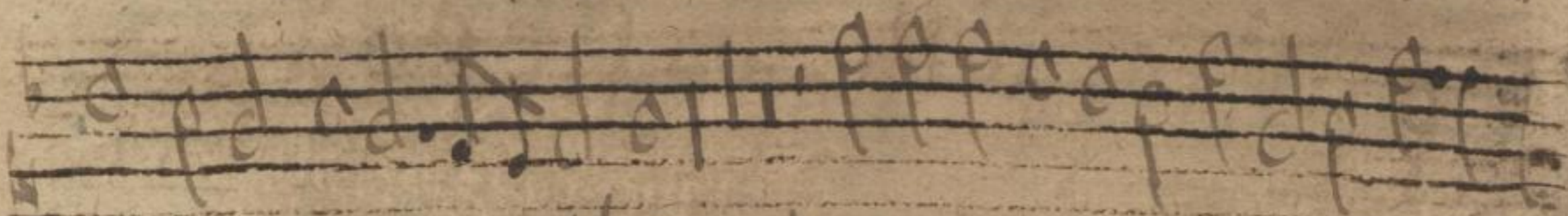
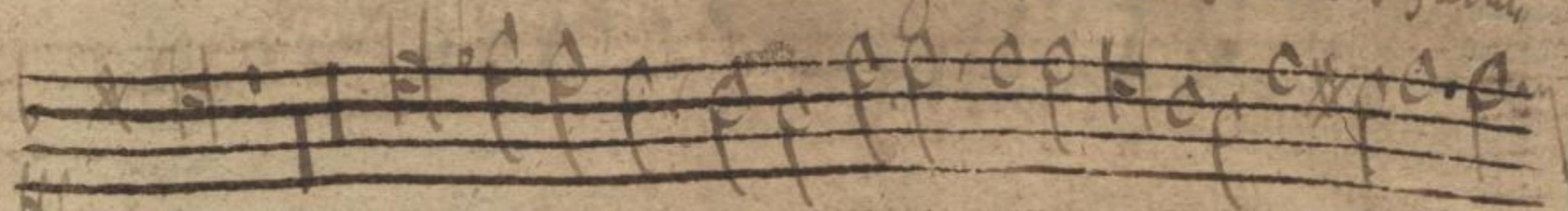


Quo pro

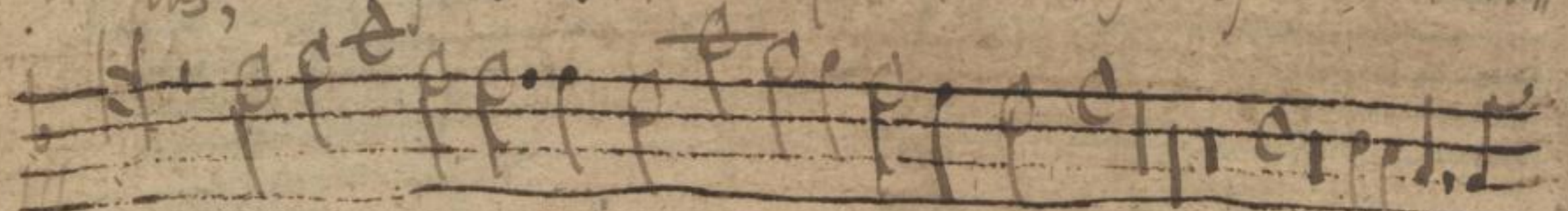
peras Phœbi cultor, Phœbi cultor, num patta,



dis aram acce dis? Non ego te ~~no~~ cultorem patta,



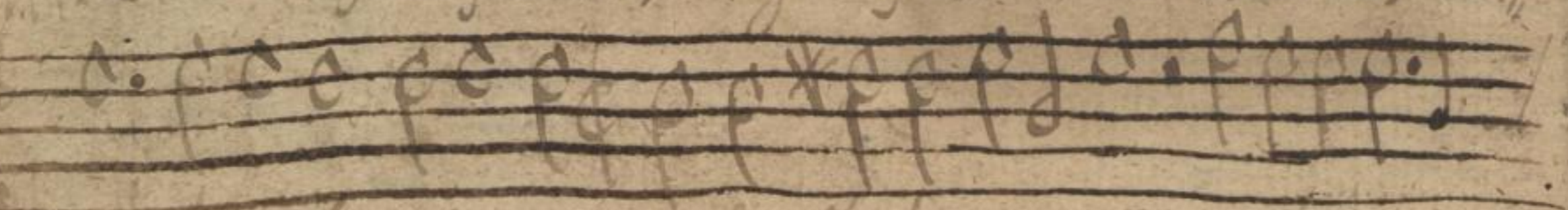
dis, Expectant te, mille proci, pulcerrima rivu



go, ast ego palla dium nunc mihi quæro virum, at, dicitur mine,



ra sola placent, Ergo felici thalamos con,



condito bonis omni re, te Phœbi numina, i