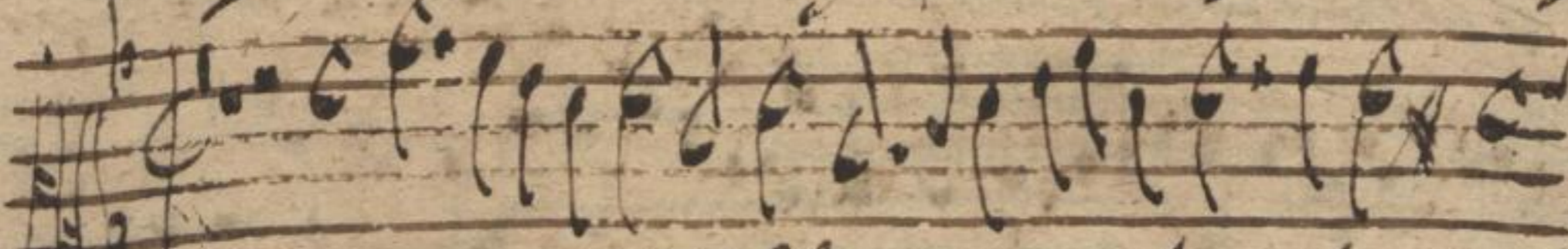




9.

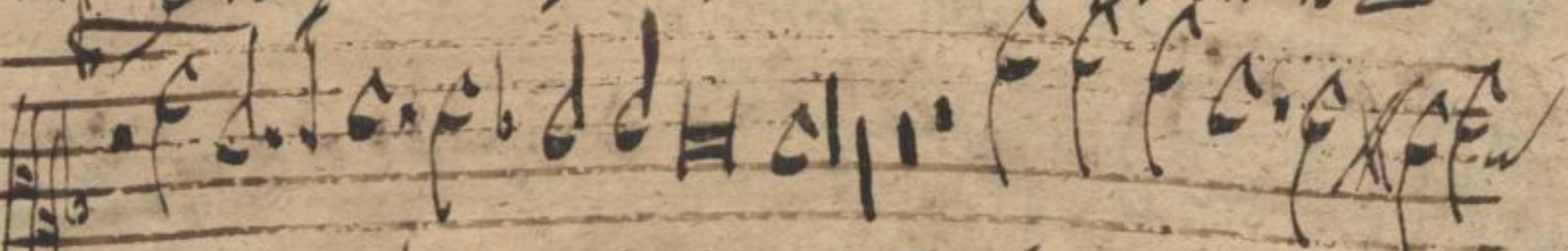
is in porta inimicis suis in porta. Altus



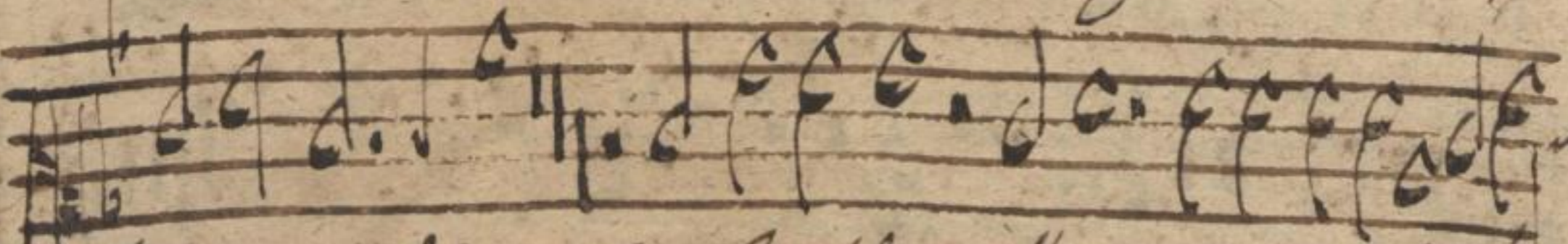
1000;
Dialogus
Grægor

Ovo pro peras hoc pi cultor

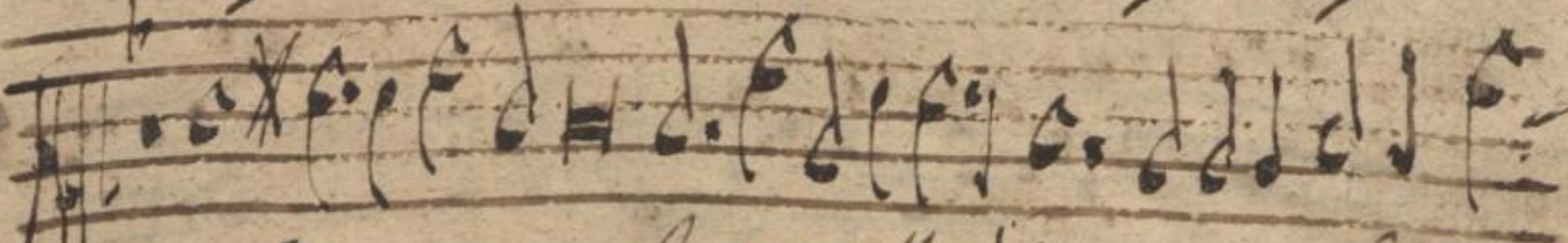
13



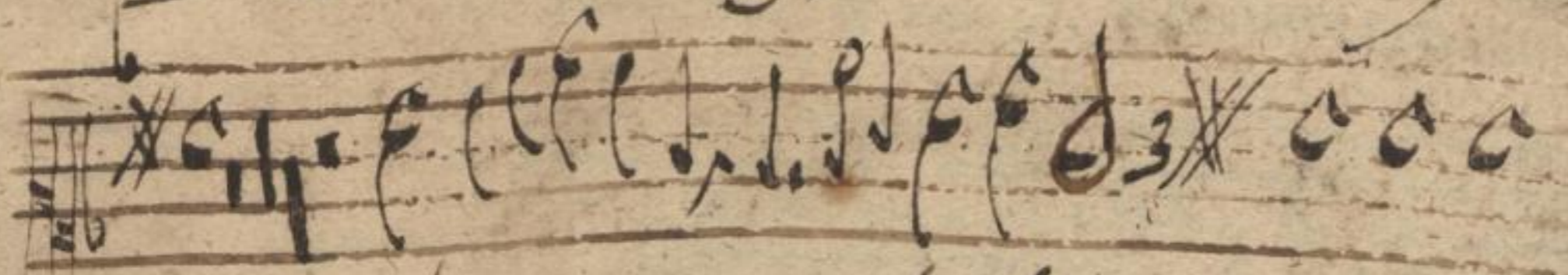
num Palladis arā accedis? Non ego te nori cul-



torum Palladis? Expectante nullo proci, pulcra una virgo



at ego palladium mune mihi gero vi-



rum at diva munera sola placent. Ergo te,