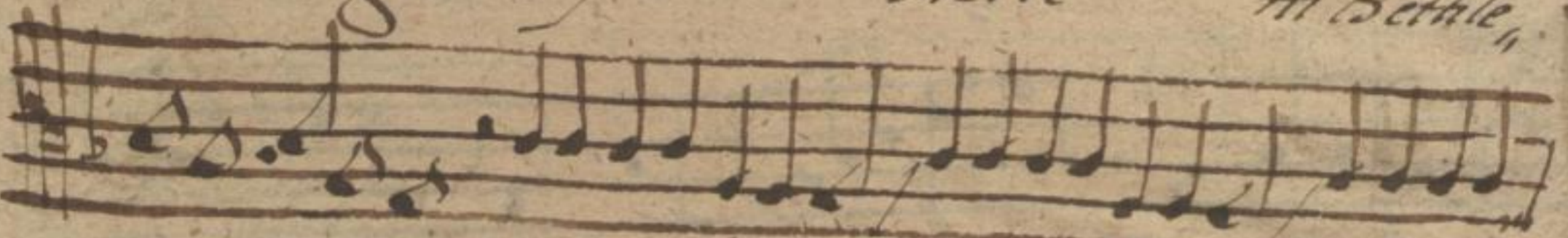


ingreditur saluator & autor humani generis ubi, ubi



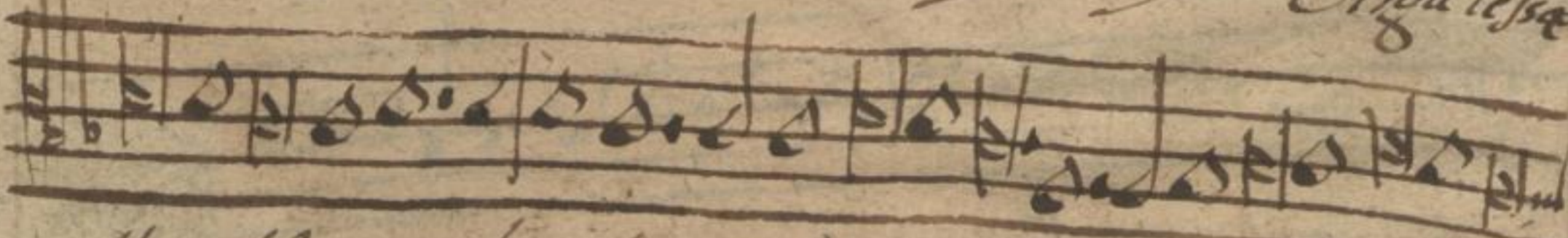
natus est rex glorie pastores dicite in Bethle-



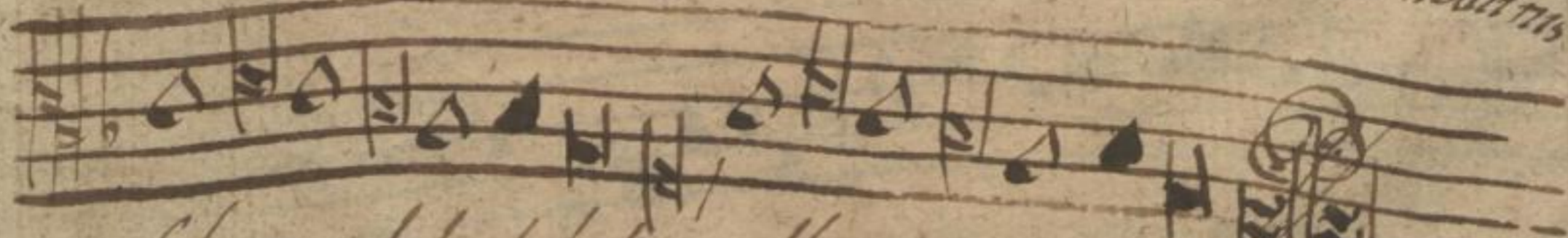
hem jude auf laßt Sündelins // auf laßt



Sündelins Gā zu Bethlehem Jude // // Virga lesse



Floruit Emanuel noster apparuit induit carnem hominis



fit puer delectabilis alle
luia.