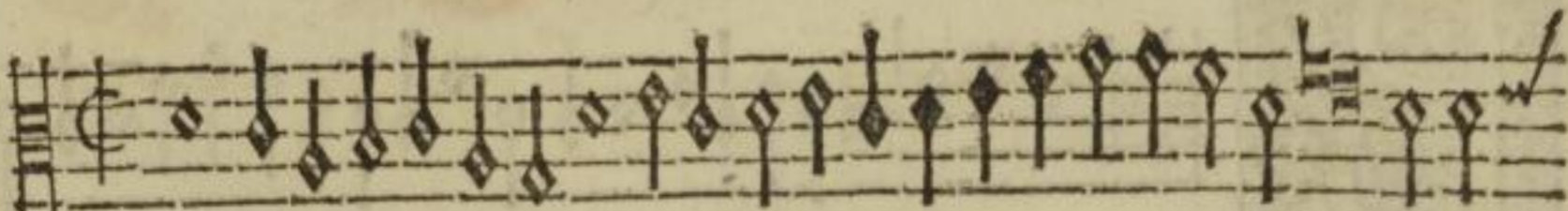


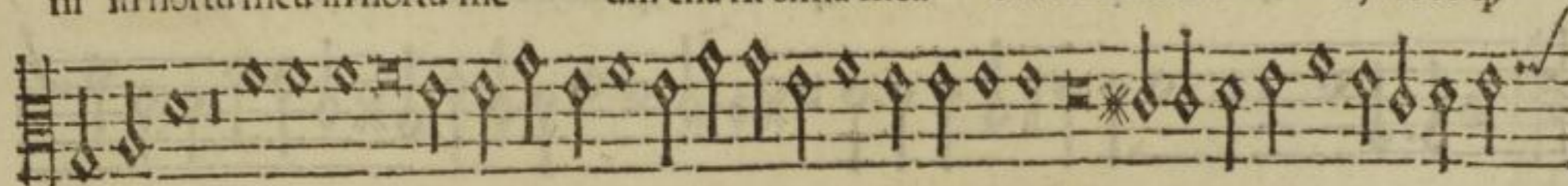
Secunda
Part.



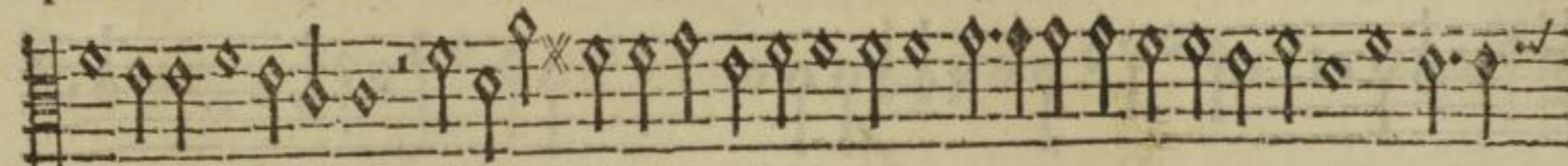
Veni in hortū meum in hortū me um in hortum meū ue-



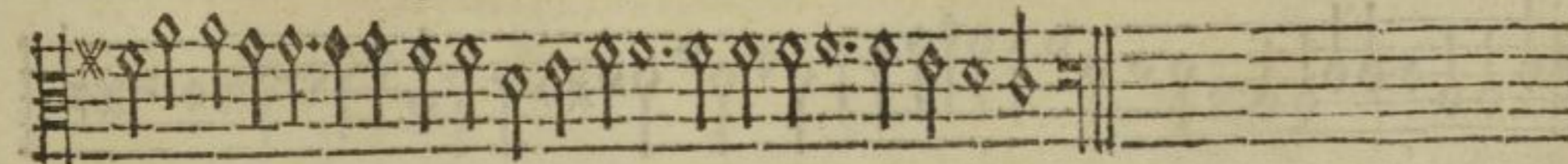
ni in hortū meū in hortū me um cha rif si ma mea charif si ma me a, Ecce q̄;



pulchra es ami ca me a a mica mea ami ca me a colum ba me a formosa mea formosa



mea formosa mea sponfa me a sponfa mea ue ni de li ba no ue ni ue ni ueni de li ba-



no ue ni de li bano ue ni ue ni de li ba no ue ni de li bano.

Ee