

L. S. Gr.

76.

No. ~~79~~.

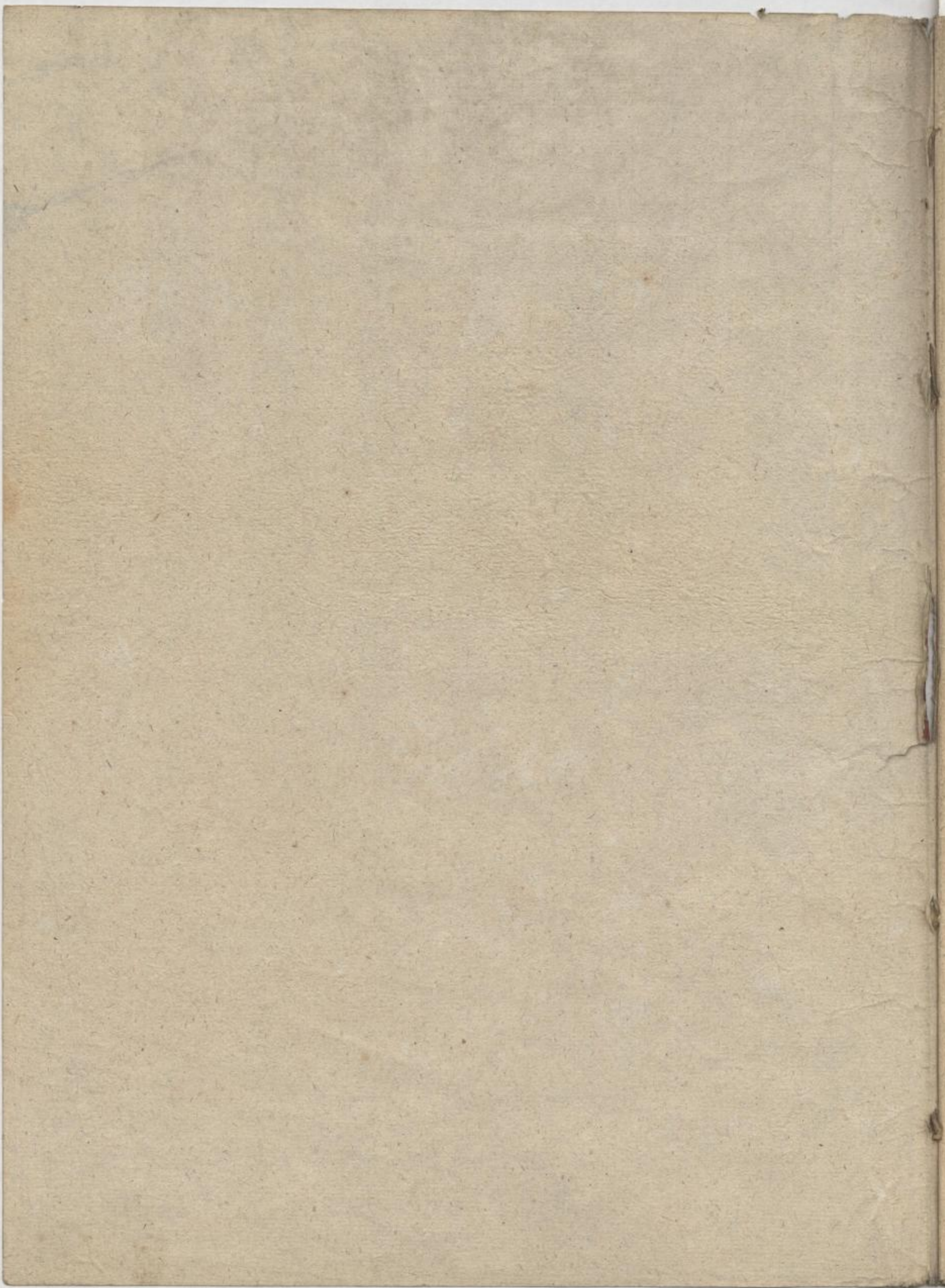
II b^g y

2

Misericordia Domini

v. Mozart.





L. S. Gr. No. 787.
76.



MISERICORDIAS



DOMINI.



In Musik gesetzt

von

W.A. MOZART.



PARTITUR.

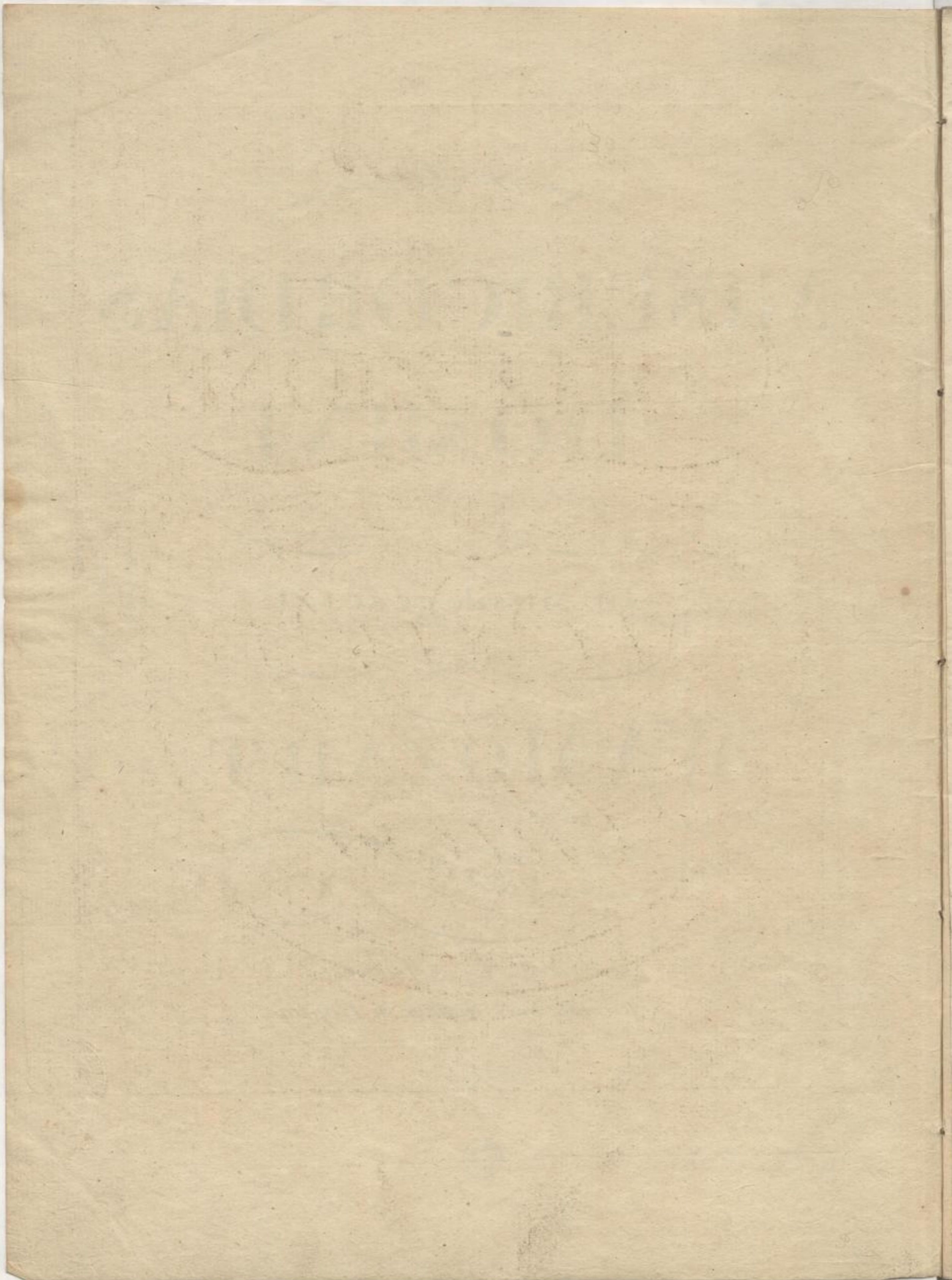
Pr. 20 Gr.

Bei A. Kühnel,
Bureau de Musique in Leipzig.

[1811]

Mus. 3972-E-504





COLLEZIONE

di

MUSICA

da

Chiesa

N^{o.}
n

Moderato.

Corni in D. *p*

Oboi. *p*

Violini. *f*

Viola. *f*

Soprani. *p* Mi-se-ri-cordias Do-mi-ni

Alti. *p*

Tenori. *p*

Bassi. *p* I-hu, der uns auf liebevoll schützst und tröstest; *f* can-ta-bo in ae-ter-

Violoncelli e Bassi. *p* *f* I-hu - der mein Ge-mü-

can-ta-bo in ae-ter-

can-ta-bo in ae-ter- num

num, can-ta-bo, can-tabo, cantabo in ae-

num, cantabo, cantabo in ae-

NB. Man kann auch diesen deutschen Text unterlegen: Ewig erschalle mein Lob dem Herrn, der unser sich erbarmet. Ohn' Unterlass ertönt unser Chor zum Preise seiner Güte.

861
 1. I-hu, der uns auf liebevoll schützst und tröstest; besing' seine Güte, die, die
 2. gleich in ihm fast besingt.

Musical score for the first system, featuring five staves with various instruments and vocal parts.

Musical score for the second system, including vocal lines with lyrics and piano accompaniment.

num, can - ta bo *p* mi - se - ri -
 can - ta - bo *p* mi - se - ri -
 ter - - num, can - ta - - - bo *p* mi - se - ri -
 ter - - num, can - ta - - - bo *p* mi - se - ri -
in - fr *su -* *er - di -*
p

Musical score for the third system, featuring piano accompaniment and vocal lines.

f *f* *f* *f*

cordias Domi ni, can - ta - - - bo, can - ta - - - bo, can - ta - - - bo in ac -
f can - ta - - - bo, can - ta - - - bo
f can - ta - - - bo,
lieblich und leicht can - ta - - - bo, *mit* *br* *in* *Je -*

Handwritten musical score for a choir and instruments. The score is written on ten staves. The top five staves are for instruments (flutes, oboes, violins, and cellos/contrabasses), and the bottom five staves are for voices (Soprano, Alto, Tenor, and Bass). The music is in a key with one flat (B-flat major or D minor) and a 3/4 time signature. The lyrics are in Latin: "ternum, mi-se-ri-cordias Do-mini" and "cantabo in ae-ter-num". There are several dynamic markings: *p* (piano) and *f* (forte). There are also some handwritten annotations in German: "Dass-geiz in f-f-f" and "Befolge". The score ends with a double bar line and a repeat sign.

canta - - - bo in ae - ter - num, cantabo in ae - ter - num in ae - ternum *p* miseri -
 ter - num, canta - bo, can - ta - bo in ae - ter - - num can - ta - bo in ae - ternum *p*
 num, can - ta - - - bo in ae - - ter - - - - num in ae - ternum *p*
 num, cantabo in aeter - - num, in ae - ter num cantabo in ae - ternum *p* *de duffen*
bringer vinn gitar *bringer vinn gitar*

cordias Domi - ni can - ta - - - bo, can - ta - - -
 can - ta - - - bo, can - ta - - -
 can - ta - - - bo,
 f can - ta - - - bo, can - ta - - - bo,
glück in ihm hat besetzt *bringer vinn gitar* *bringer vinn gitar*

bo, can - ta - bo in ae - ternum,
 bo, can - ta - bo
 canta - bo
 canta - bo

p

p
f
 cantabo in ae -
 Mi - se - ri - cordias Do - mini, can - ta - bo in ae - ter -
 Cello

Musical score for the first system, featuring vocal lines and piano accompaniment. The lyrics are: *canta-bo in ae-ter-num, canta-bo in ae-ter-num, in ae-ter-num, in ae-ter-num*. The piano part includes a forte (*f*) dynamic marking and a 7-measure rest.

Musical score for the second system, continuing the vocal and piano parts. The lyrics are: *ter-num, canta-bo, canta-bo in ae-ter-num, in ae-ter-num; canta-bo in ae-ter-num, in ae-ter-num; canta-bo in ae-ter-num, in ae-ter-num; num, canta-bo in aeternum, in ae-ter-num;*. The piano part continues with complex rhythmic patterns.

Handwritten musical score for the hymn "Misericordias Domini". The score is written on ten staves, including vocal parts and instrumental accompaniment. The key signature is B-flat major (two flats), and the time signature is 4/4. The piece begins with a piano (*p*) dynamic and features several passages of forte (*f*) accompaniment. The vocal parts include Latin lyrics and German translations. The German lyrics are: "Herr, der dich liebvolle sieht u. trägt, / der dich liebvolle sieht u. trägt." The Latin lyrics are: "mi-seri-cordias Do-mi-ni can-ta-bo in ae-ter-num, in ae-ter-num; Mi-se-ri-cordias Do-mi-ni can-ta-bo in ae-ter-num; Mi-se-ri-cordias Do-mi-ni can-ta-bo in ae-ter-num; Mi-se-ri-cordias Do-mi-ni can-ta-bo in ae-ter-num." The score concludes with a piano (*p*) dynamic. The page number 861 is printed at the bottom center.

bo, can - ta - - - bo in ae - ter - - -
 ta - - - bo, can - ta - bo in ae - ter - - - num, can -
 ta - - - bo, can - ta - - -
 bo, can - ta - bo in ae - ter - - num, can - ta - - bo in ae -

num, can - ta - bo in ae - ter - - - num can - ta - bo in ae -
 ta - - - bo in ae - ter - - - num
 bo can - ta - bo in ae - ter - - num, can - ta - bo in ae - ter - num, can -
 ter - num, can - ta - - - bo can - ta - - -

Musical score for the first system, featuring vocal lines and piano accompaniment. The lyrics include: *p* Miseri-cordias Domi-ni, se-ri-cordias Do-mi-ni, cantabo in ae-

Musical score for the second system, featuring vocal lines and piano accompaniment. The lyrics include: *f* canta-bo in ae-ter-num, canta-bo in ae-ternum, canta-bo in ae-ter-

ter - num, canta - - - bo in ae - ter - - - num in ae - ternum *p* Mi - se - ri -
 canta - - - bo in ae - ter - - - num, canta - - - bo in *p*
 num, in ae - ter - num, canta - - bo in *p*
 num, cantabo in ae - ter - num in ae - ter - num cantabo in

for soprano & alto voices - the main theme - for

cordi - as Do - mi - ni *f* can - ta - bo
 can - ta - bo in ae - ter - num in ae - ter -

for tenor & bass voices - the main theme - for

Celli

12

in ae-ter-num, in ae-ter-num, can-ta-bo, can-ta-bo in ae-ter-num can-
 num, in ae-ter-num, can-ta-bo, can-ta-
 num, can-ta-bo

Andante
 can-ta-bo in ae-ter-num Celli
 Bassi can-ta-bo in ae-ter-num
 Bassi

ta-bo, can-ta-bo in ae-ter-num, can-ta-
 bo, can-ta-bo in ae-ter-num, can-ta-bo in ae-ter-
 can-ta-bo in ae-ter-num,
 can-ta-bo in ae-ter-num, can-

bo in, ae-ternum canta - - - bo in ae-ter - - -

num canta - - bo in aeter - num in ae-ter - - - num, can - ta - - -

canta bo in ae - ter - - num, cantabo in aeter - num, canta - bo cantabo, cantabo, can

ta - - - bo, can - ta - - bo, canta - bo cantabo, cantabo, cantabo,

gr. br. fin. gr. br. fin. gr. br. fin. gr. br. fin.

num

bo

tabo in ae-ter - - num. *f.* Mi - - - se - ri - cordias Do - - mi -

can - ta - - bo *p* *gr. br. fin.* *gr. br. fin.* *gr. br. fin.* *gr. br. fin.*

gr. br. fin.

861

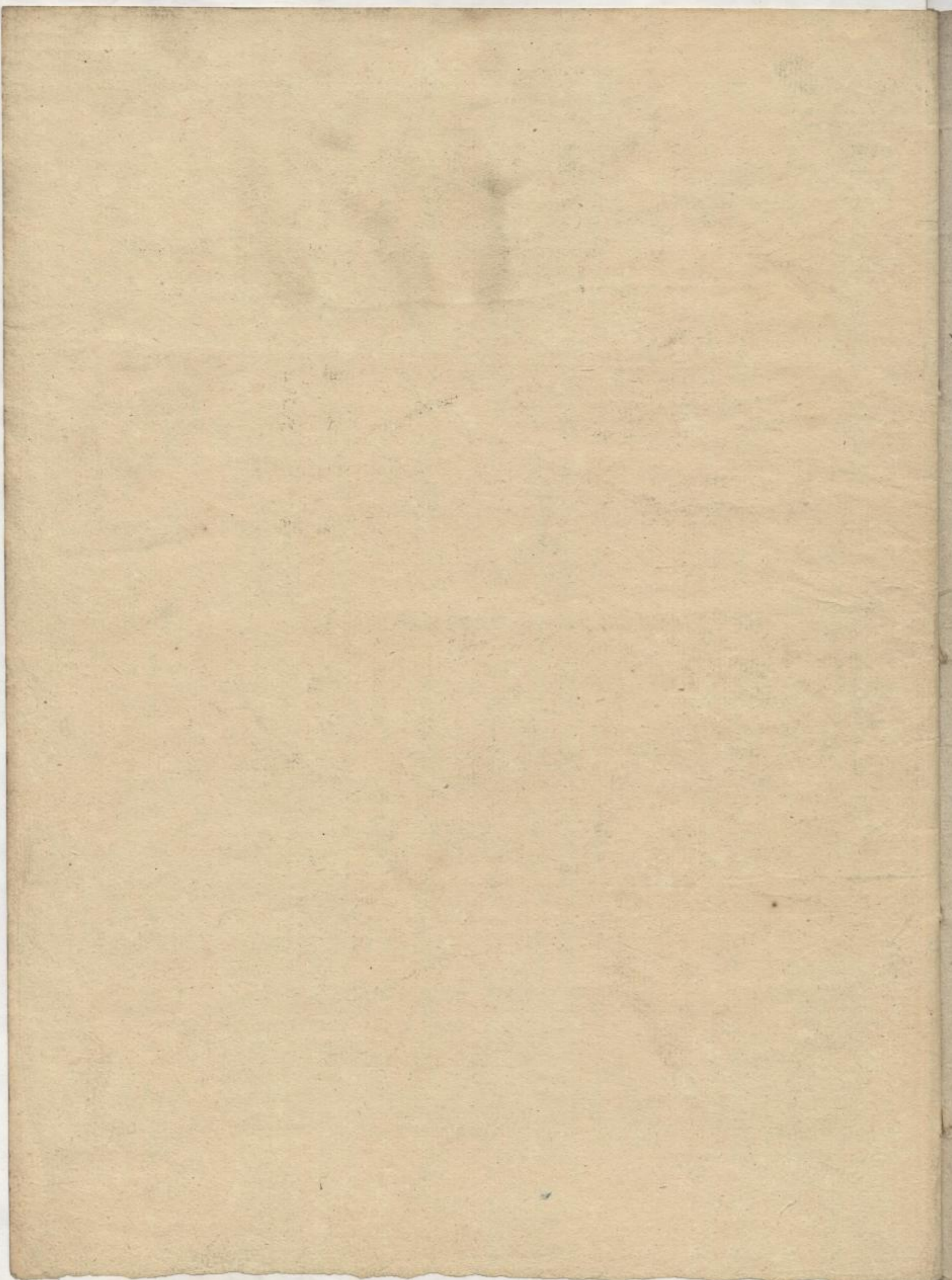
p *canta - bo in ae - ter - - - - - num, canta - bo in ae -*
canta - bo in ae - ter - - - - - num,
canta - bo in ae - ter - - - - - num, can - ta -
 COR
di -

ter - - - - - num, canta - bo in aeternum, in ae - ter - num, cantabo,
canta - - bo in ae - ter - - - - - num, cantabo, cantabo, canta -
bo in ae - ter - - - - - num, f cantabo, cantabo, can -
as
cantabo in ae - ter - - - - - num, cantabo, cantabo, can -
 861

canta-bo, canta-bo, canta-bo, canta-bo, can-ta-bo, can-ta-
 bo in ae-ter-num, can-ta-bo, can-ta-bo, can-ta- - - - bo, can-ta-
 ta-bo, can-ta- - - - bo in ae-ter-num, can-ta-bo, can-ta- - - -

num
 canta- - - bo in ae ter- - -

- - - bo in ae-ter- - num, in ae-ter- - num, in ae-ter- - num.
 - - - bo in ae-ter- - num,
 num canta-bo
 - - - bo in ae-ter- - num, in ae-ter- - num, in ae-ter- - num.



(3972
E/504)

