

K.P.G.



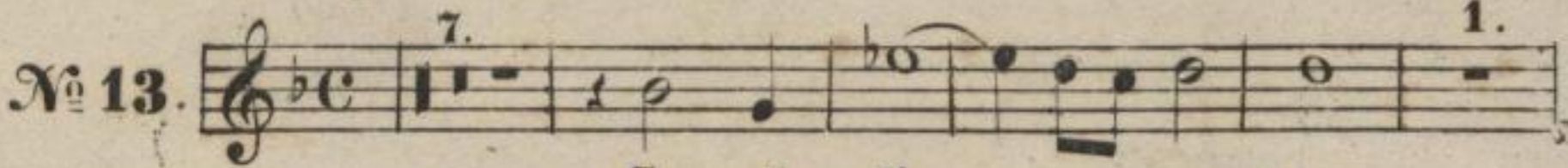
CRUCIFIXUS.

Preis dem Heiland.

SOPRANO I.

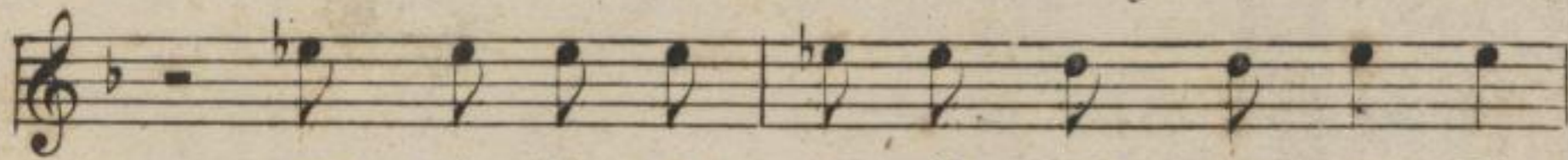
Largo assai.

Lotti.

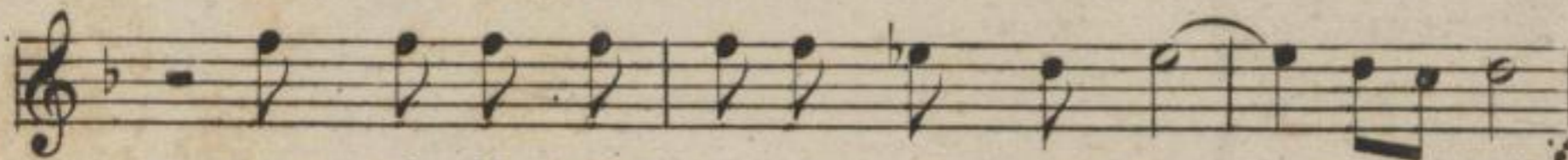


N^o 13.

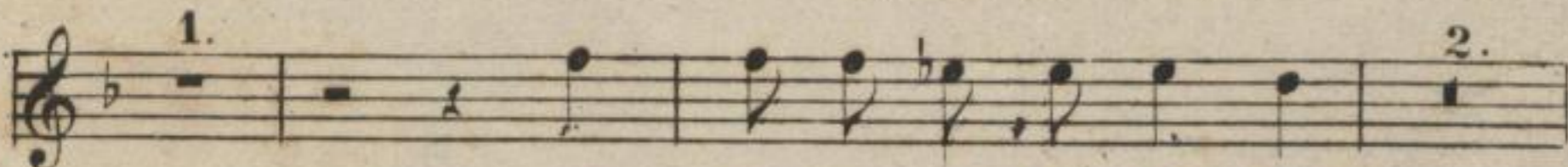
Cru - ei - fi - xus,
Preis dem Hei - land,



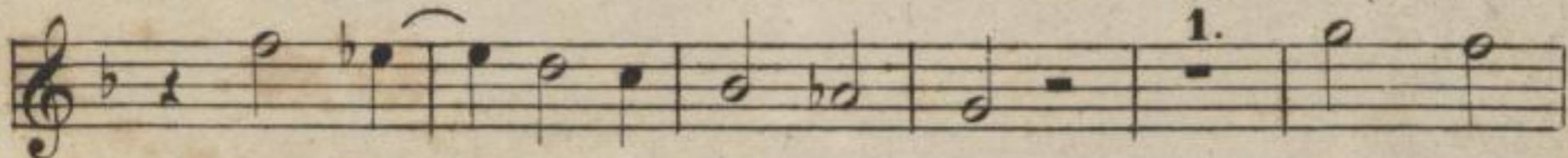
eru - ei - fi - xus, e - ti - am pro no - bis,
Preis dem Hei - land, der am Stamm des Kreu - zes,



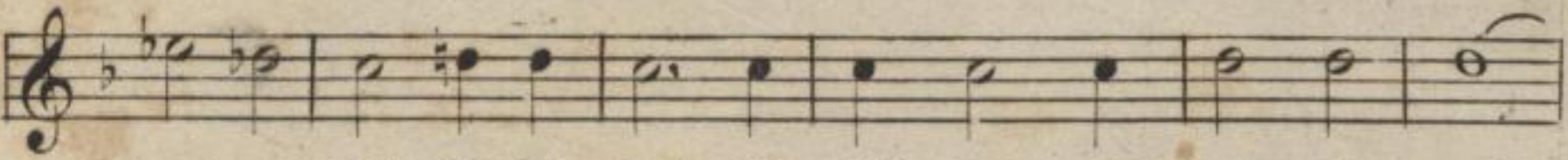
eru - ei - fi - xus, e - ti - am pro no - bis
Preis dem Hei - land, der am Stamm des Kreu - zes



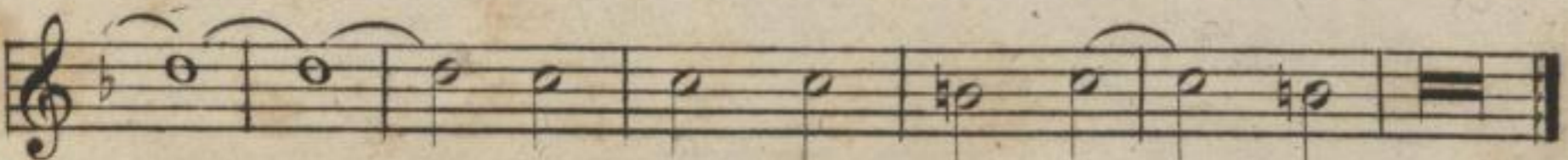
sub Pon - ti - o Pi - la - tus
um uns - rer Sün - den wil - len



pas - sus, pas -
schmach - voll, schmach -



- sus et se - pul - tus est, pas - sus et se - pul -
- voll in den Tod sich gab, schmachvoll in den Tod



- tus et se - pul - tus est.
sich gab, den Tod sich gab.

Eigenthum der Verleger.

B. & B. 2281. o.

Ed. Bote & G. Bock, Berlin.

Mus. 2159 - D - 501

