

K.L.G.

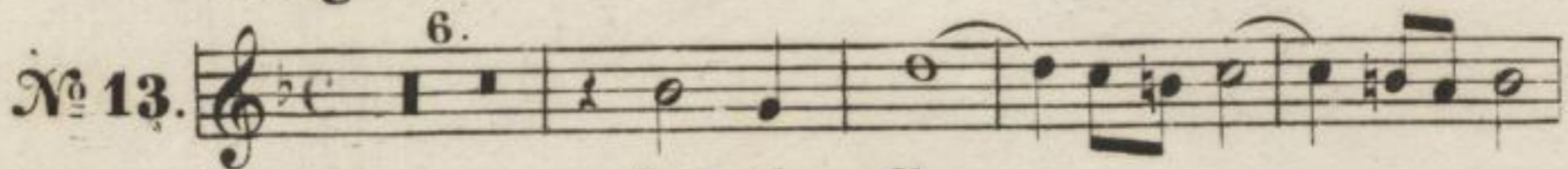


CRUCIFIXUS. Preis dem Heiland.

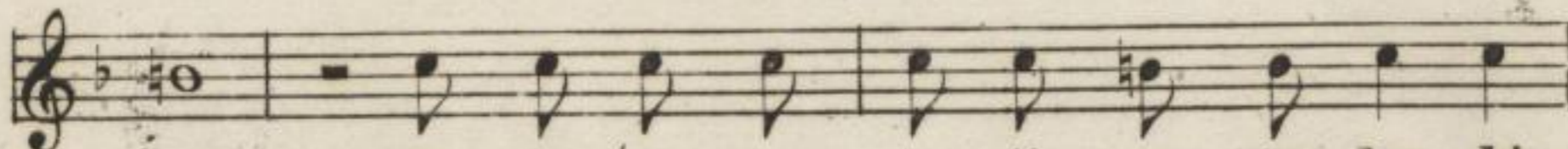
SOPRANO II.

Lotti.

Largo assai.



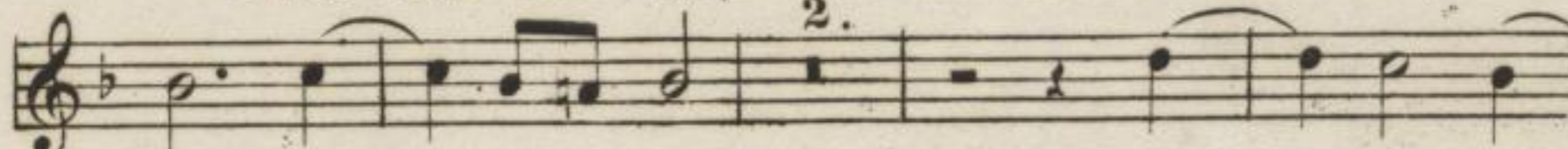
Cru - ei - fi -
Preis dem Hei -



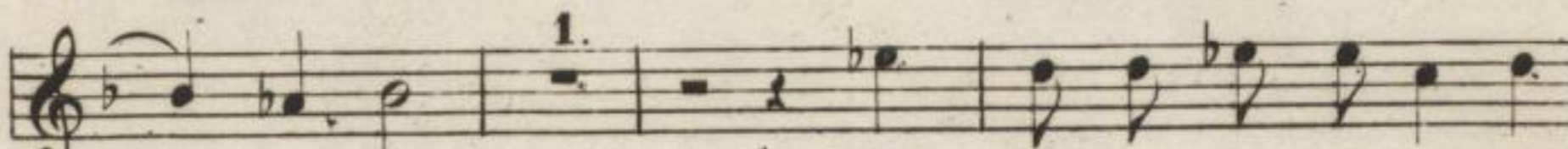
xus, eru - ei - fi - xus, e - ti - am pro no - bis,
land, Preis dem Hei - land, der am Stamm des Kreu - zes,



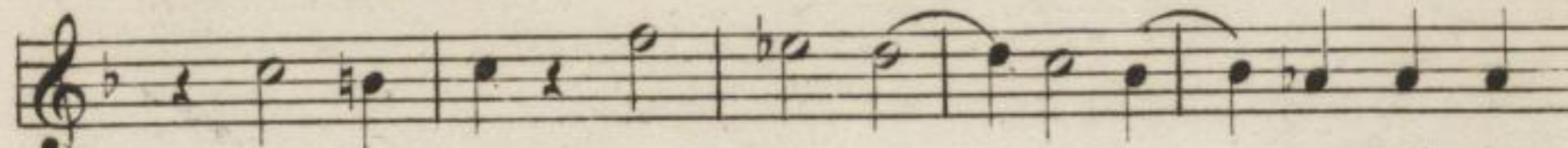
eru - ei - fi - xus, e - ti - am pro no - bis, pro
Preis dem Hei - land, der am Stamm des Kreu - zes, des



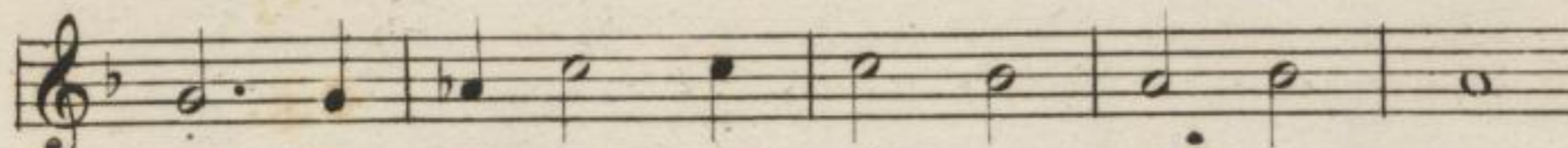
no - bis pas
Kren - zes schmach -



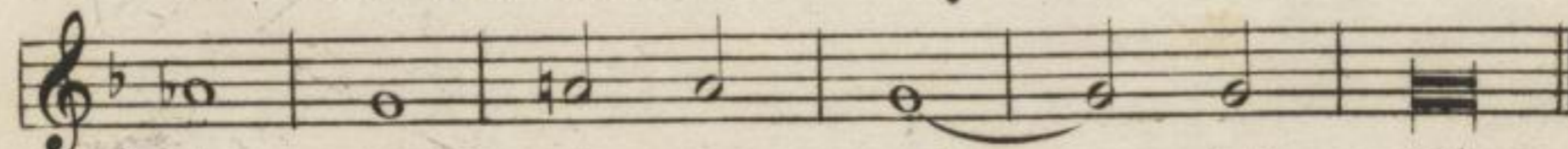
- sus sub Pon - ti - o Pi - la - to,
- voll un uns - rer Sün - den wil - len,



pas - sus, pas - sus, et se -
schmach - voll, schmach - voll, in den



pul - tus est, pas - sus et se - pul -
Tod sich gab, schmachvoll in den Tod



- tus et se - pul - tus est.
sich gab, den Tod sich gab.

B.&B. 2281. o.

Mus. 2159 - D - 501

