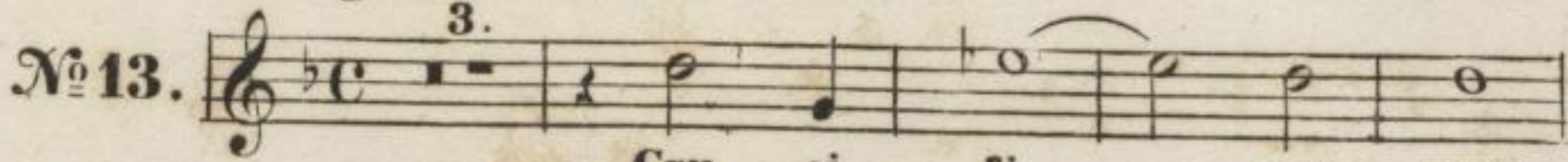


# CRUCIFIXUS.

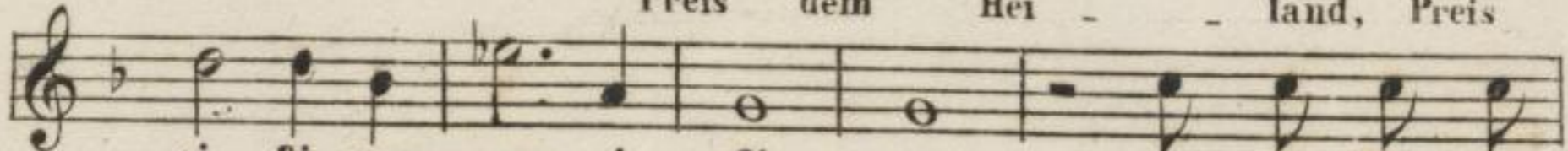
Preis dem Heiland.

Largo assai. TENORE I.

Lotti.



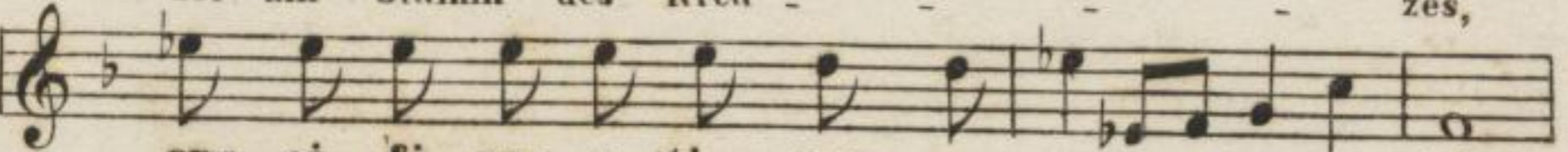
Cru - ei - fi - xus, eru -  
Preis dem Hei - land, Preis



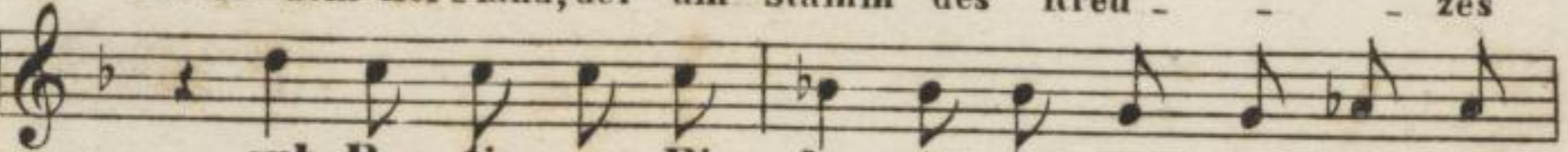
ei - fi - xus, eru - ei - fi - xus,  
dem Heiland, Preis dem Hei - land, Preis dem Hei - land,



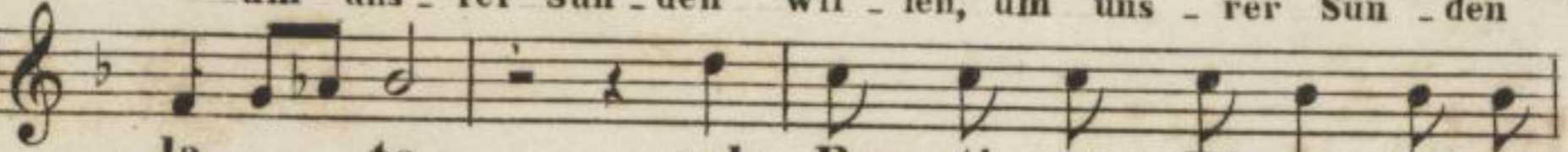
e - ti - am pro no - bis,  
der am Stamm des Kreu - zes,



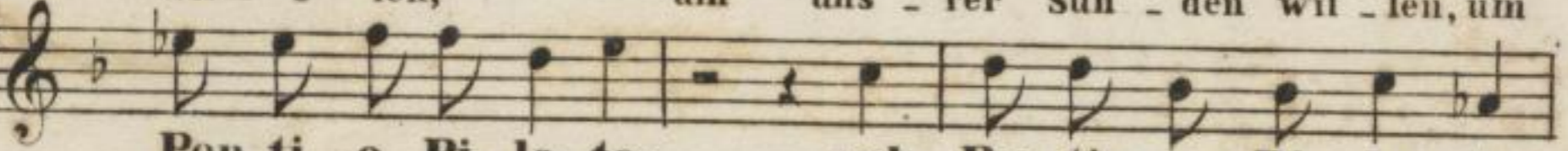
eru - ei - fi - xus e - ti - am pro no - bis  
Preis dem Hei - land, der am Stamm des Kreu - zes



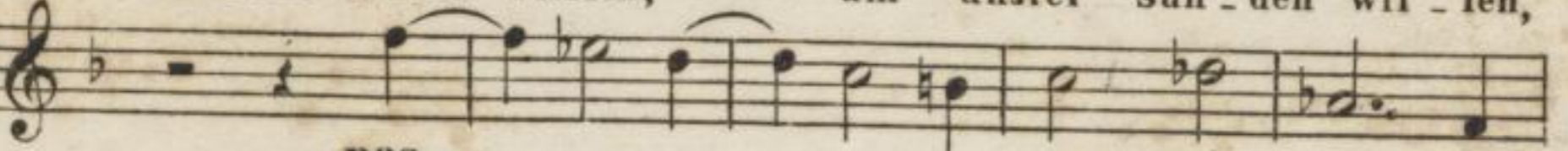
sub Pon - ti - o Pi - la - to, sub Pon - ti - o Pi -  
um uns - rer Sün - den wil - len, um uns - rer Sün - den



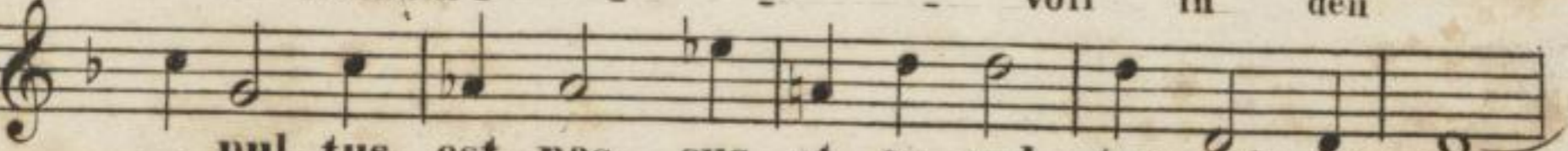
la - to, sub Pon - ti - o Pi - la - to, sub  
wil - len, um uns - rer Sün - den wil - len, um



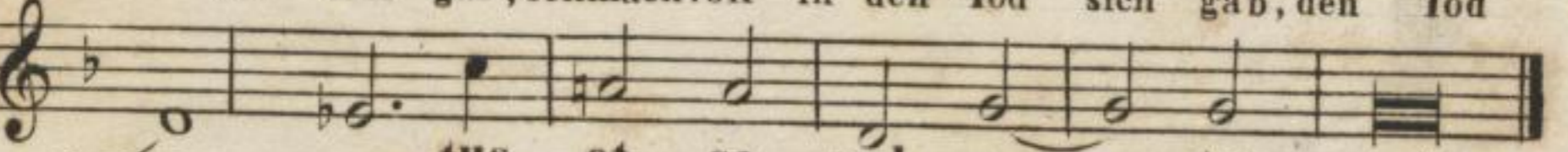
Pon - ti - o Pi - la - to, sub Pon - ti - o Pi - la - to,  
uns - rer Sün - den wil - len, um unsrer Sün - den wil - len,



pas - sus et se - pul -  
schmach - voll in den



- pul - tus est, pas - sus et se - pul - tus est, se - pul -  
Tod sich gab, schmachvoll in den Tod sich gab, den Tod



- tus et se - pul - tus est.  
sich gab, den Tod sich gab.

B.&B.2281. o.

Mus. 2159-D-501

