

K.P.G.



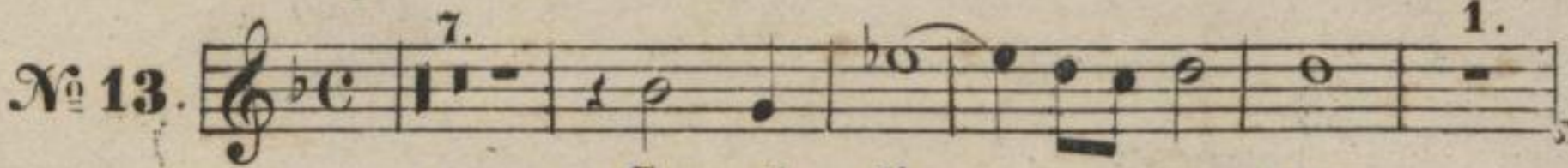
CRUCIFIXUS.

Preis dem Heiland.

SOPRANO I.

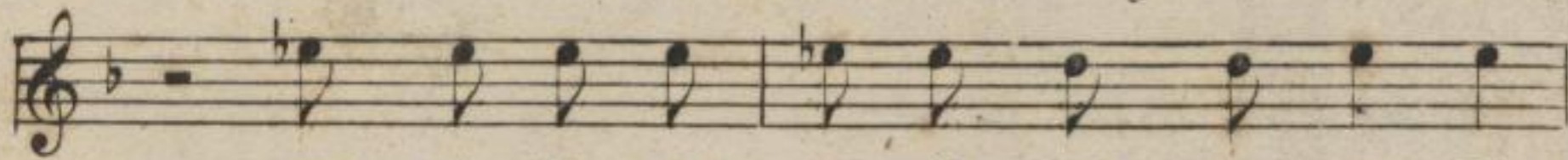
Largo assai.

Lotti.

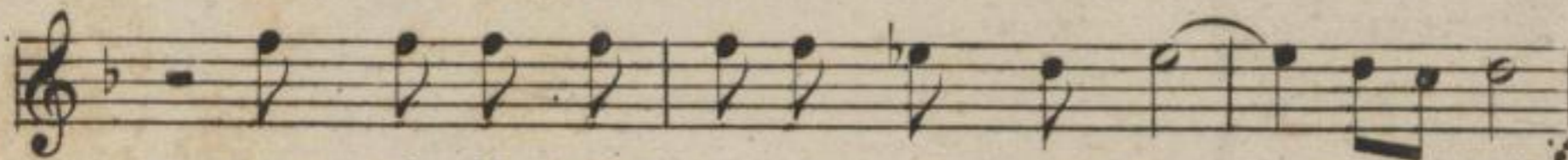


N^o 13.

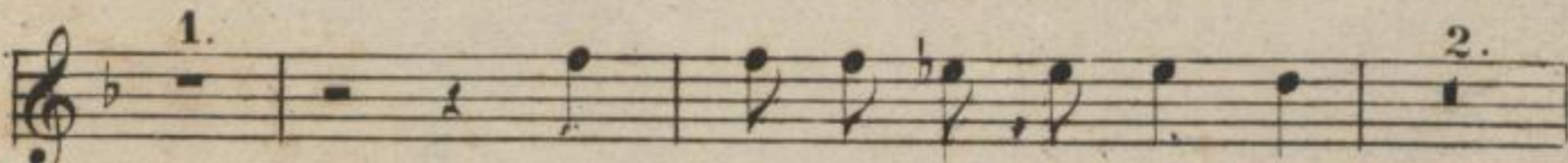
Cru - ei - fi - - - xus,
Preis dem Hei - - - land,



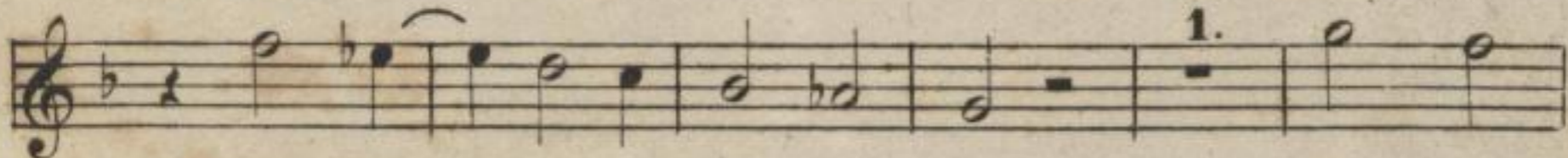
eru - ei - fi - xus, e - ti - am pro no - bis,
Preis dem Hei - land, der am Stamm des Kreu - zes,



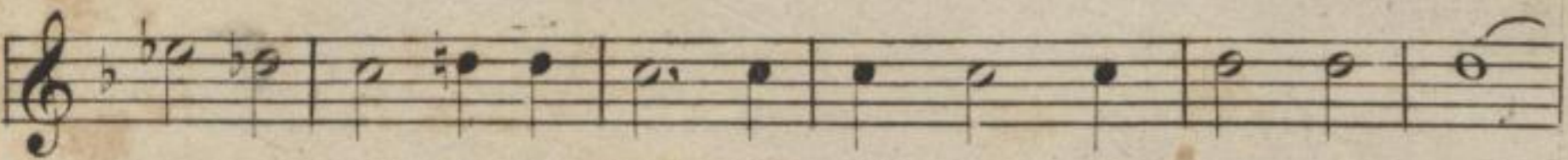
eru - ei - fi - xus, e - ti - am pro no - - - bis
Preis dem Hei - land, der am Stamm des Kreu - - - zes



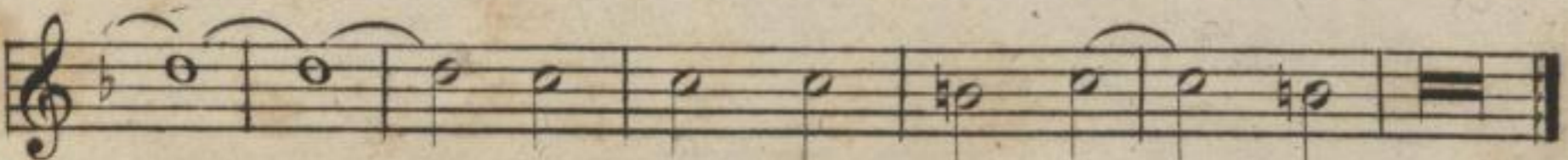
sub Pon - ti - o Pi - la - tus
um uns - rer Sün - den wil - len



pas - - - sus, pas - - -
schmach - - - voll, schmach - - -



- - - sus et se - pul - tus est, pas - sus et se - pul -
- - - voll in den Tod sich gab, schmachvoll in den Tod



- - - tus et se - pul - - - tus est.
sich gab, den Tod sich gab.

Eigenthum der Verleger.

B. & B. 2281. o.

Ed. Bote & G. Bock, Berlin.

Mus. 2159 - D - 501





CHORAL

Part 1

1848

Handwritten musical score on ten staves. The notation is extremely faint and illegible. The page shows significant signs of age, including yellowing and brownish stains, particularly in the lower half.



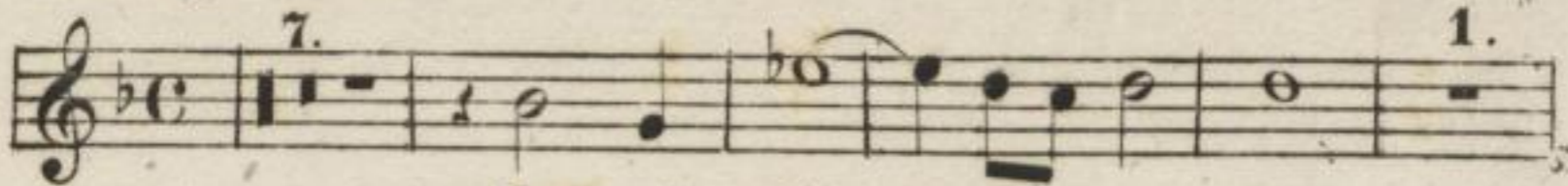
CRUCIFIXUS.

Preis dem Heiland.

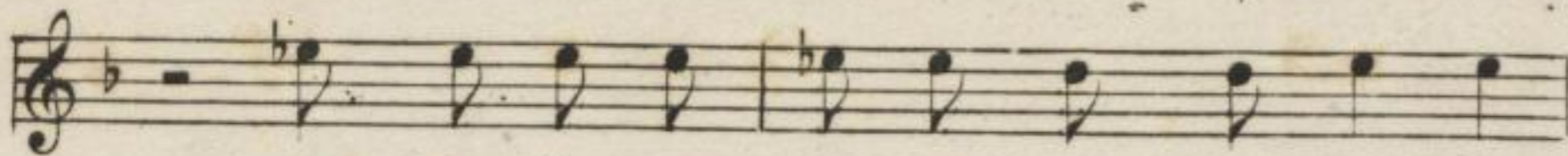
SOPRANO I.

Largo assai.

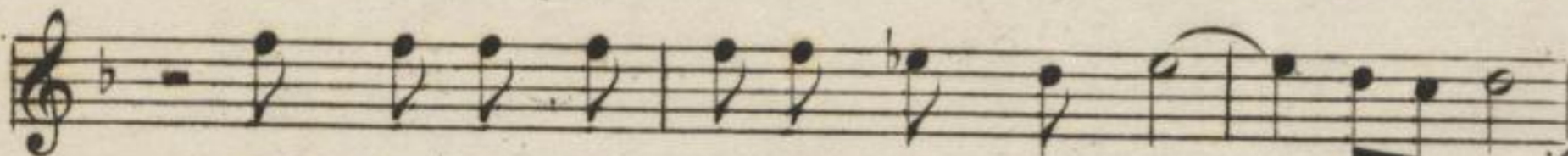
Lotti.

N^o 13. 

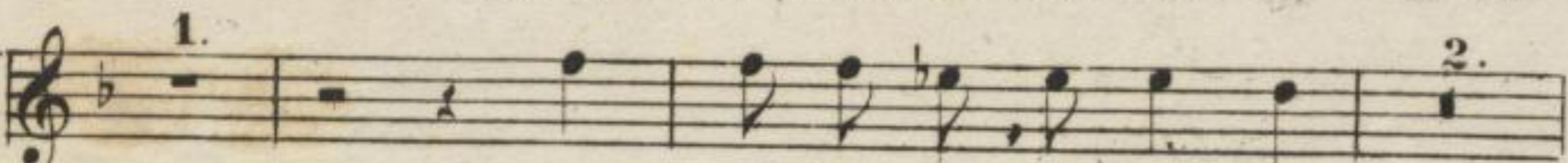
Cru - ci - fi - - - xus,
Preis dem Hei - - - land,



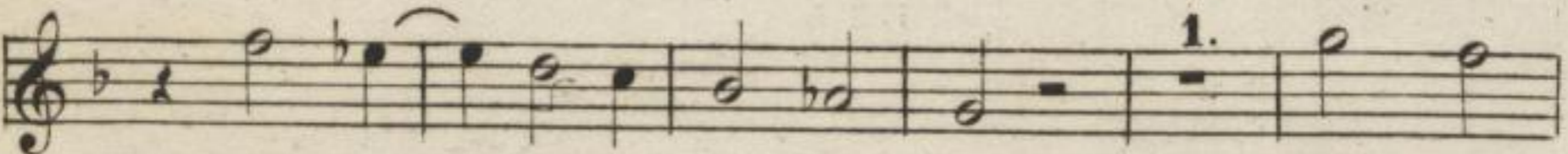
eru - ci - fi - xus, e - ti - am pro no - bis,
Preis dem Hei - land, der am Stamm des Kreu - zes,



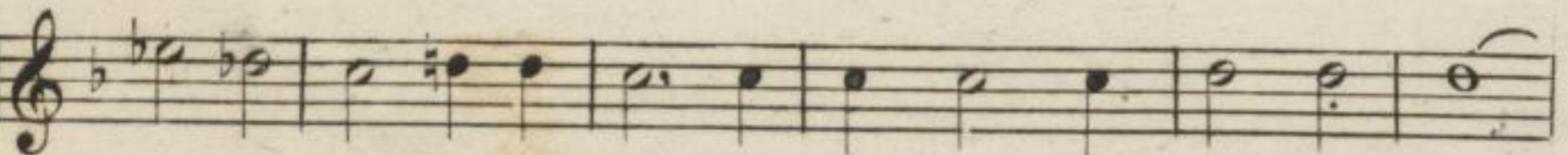
eru - ci - fi - xus, e - ti - am pro no - - - bis
Preis dem Hei - land, der am Stamm des Kreu - - - zes



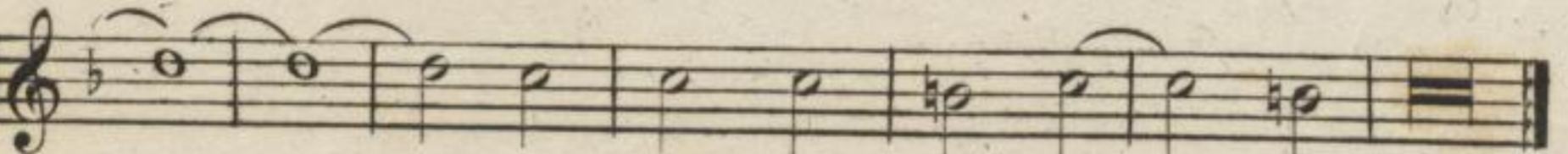
sub Pon - ti - o Pi - la - tus
um uns - rer Sün - den wil - len



pas - - - sus, pas - - -
schmach - - - voll, schmach - - -



- sus et se - pul - tus est, pas - sus et se - pul -
- voll in den Tod sich gab, schmachvoll in den Tod



- - - tus et se - pul - - - tus est.
sich gab, den Tod sich gab.

Eigenthum der Verleger.

B.&B. 2281. o.

Ed. Bote & G. Bock. Berlin.



Mus. 2159 - D - 501



CHRISTMAS

Paris New Holland

SONNET I

Part

Large



For the first time
I have seen thee



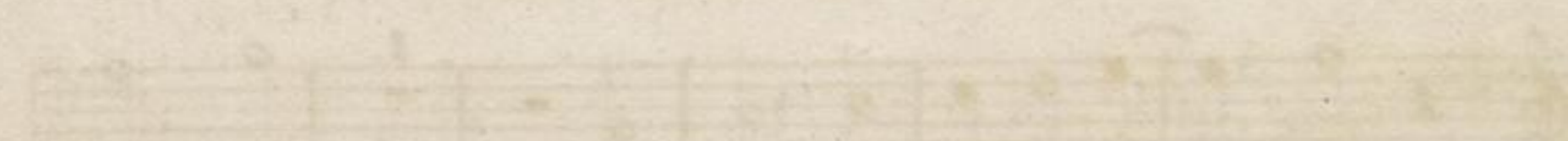
For the first time
I have seen thee



For the first time
I have seen thee



For the first time
I have seen thee



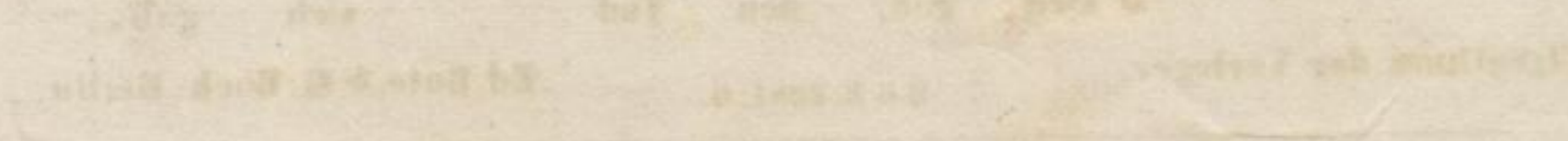
For the first time
I have seen thee



For the first time
I have seen thee



For the first time
I have seen thee



For the first time
I have seen thee



K.L.G.

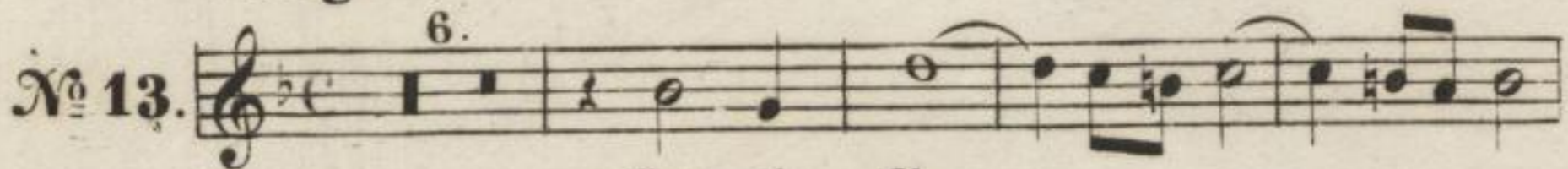


CRUCIFIXUS. Preis dem Heiland.

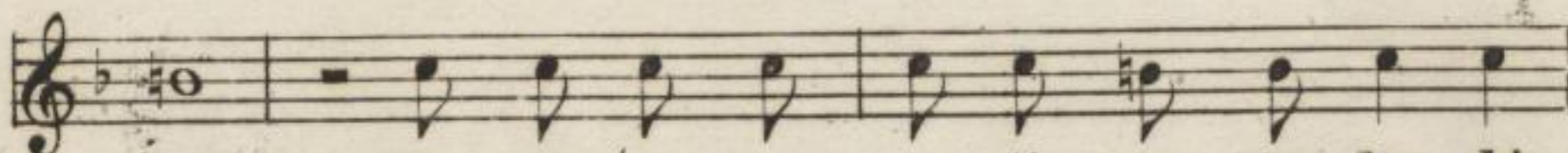
SOPRANO II.

Lotti.

Largo assai.



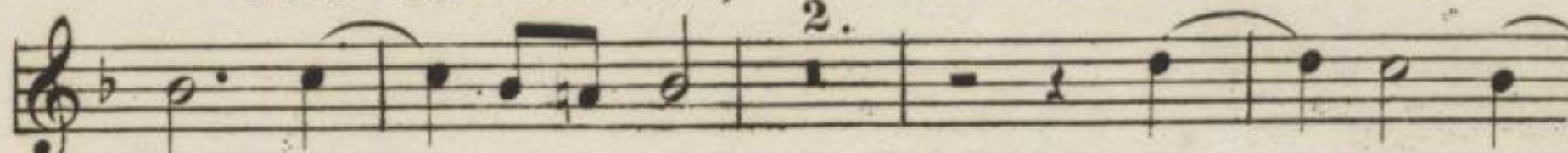
Cru - ei - fi -
Preis dem Hei -



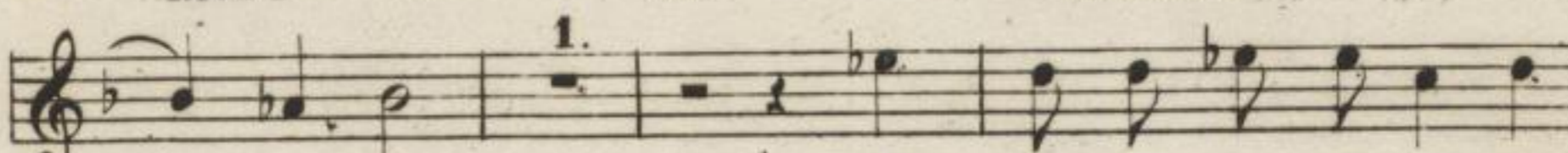
xus, eru - ei - fi - xus, e - ti - am pro no - bis,
land, Preis dem Hei - land, der am Stamm des Kreu - zes,



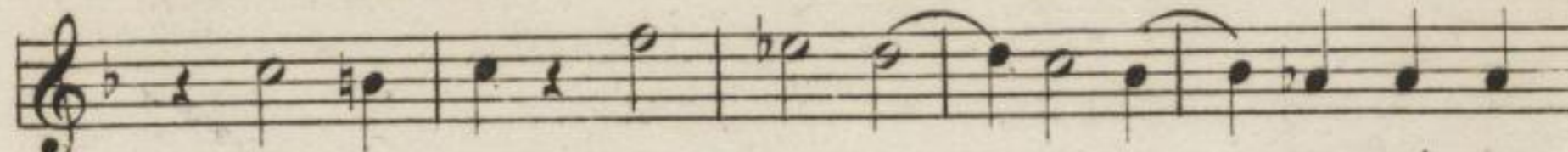
cru - ei - fi - xus, e - ti - am pro no - bis, pro
Preis dem Hei - land, der am Stamm des Kreu - zes, des



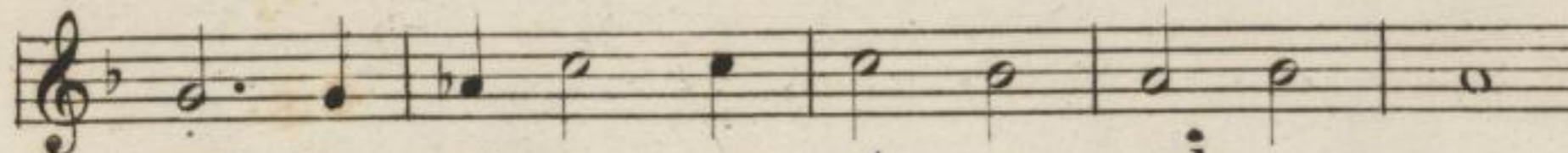
no - bis pas
Kren - zes schmach -



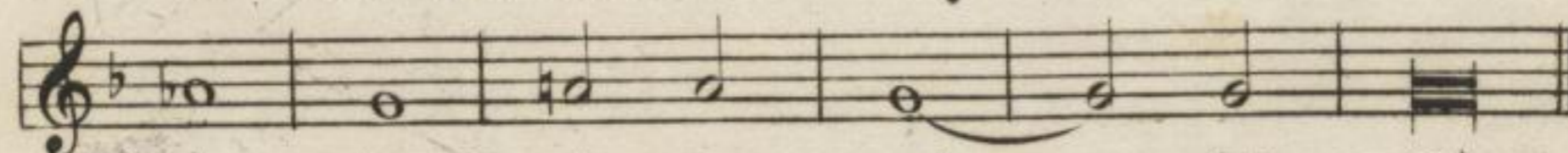
- sus sub Pon - ti - o Pi - la - to,
- voll un uns - rer Sün - den wil - len,



pas - sus, pas - sus, et se -
schmach - voll, schmach - voll, in den



pul - tus est, pas - sus et se - pul -
Tod sich gab, schmachvoll in den Tod



- tus et se - pul - tus est.
sich gab, den Tod sich gab.

B.&B. 2281. o.

Mus. 2159 - D - 501





CAUCIEXIS

Waltz from Holland

Opus 10, No. 1

Ball

Erste Hand

Musical staff with notes and clef.

Two lines of text, likely lyrics or performance instructions.

Musical staff with notes and clef.

Two lines of text, likely lyrics or performance instructions.

Musical staff with notes and clef.

Two lines of text, likely lyrics or performance instructions.

Musical staff with notes and clef.

Two lines of text, likely lyrics or performance instructions.

Musical staff with notes and clef.

Two lines of text, likely lyrics or performance instructions.

Musical staff with notes and clef.

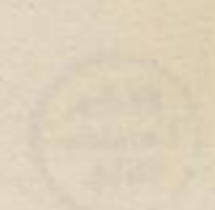
Two lines of text, likely lyrics or performance instructions.

Musical staff with notes and clef.

Two lines of text, likely lyrics or performance instructions.

Musical staff with notes and clef.

Two lines of text, likely lyrics or performance instructions.





CRUCIFIXUS.

Preis dem Heiland.

SOPRANO II.

Largo assai.

Lotti.

N^o 13. ^{6.}

Cru - ei - fi -
Preis dem Hei -

xus, eru - ei - fi - xus, e - ti - am pro no - bis,
land, Preis dem Hei - land, der am Stamm des Kreu - zes,

eru - ei - fi - xus, e - ti - am pro no - bis, pro
Preis dem Hei - land, der am Stamm des Kreu - zes, des

no - bis pas -
Kreu - zes schmach -

^{2.}

- sus sub Pon - ti - o Pi - la - to,
- voll um uns - rer Sün - den wil - len,

pas - sus, pas - sus, et se -
schmach - voll, schmach - voll, in den

pul - tus est, pas - sus et se - pul -
Tod sich gab, schmachvoll in den Tod

tus et se - pul - tus est.
sich gab, den Tod sich gab.

B.&B. 2281. o.

Mus. 2159 - D - 501





ORATORIO
Evangelium Matthaei
ACTUS II

Tempo moderato
Musical staff with notes and lyrics: *Et ait illis: Nunc etiam ego mitto vos in mundum...*

Cap. II
Musical staff with notes and lyrics: *...in mundum praedicare Evangelium...*

Musical staff with notes and lyrics: *...in omni terra...*

Musical staff with notes and lyrics: *...et in omni creatura...*

Musical staff with notes and lyrics: *...et in omni lingua...*

Musical staff with notes and lyrics: *...et in omni regione...*





K.P. 9.

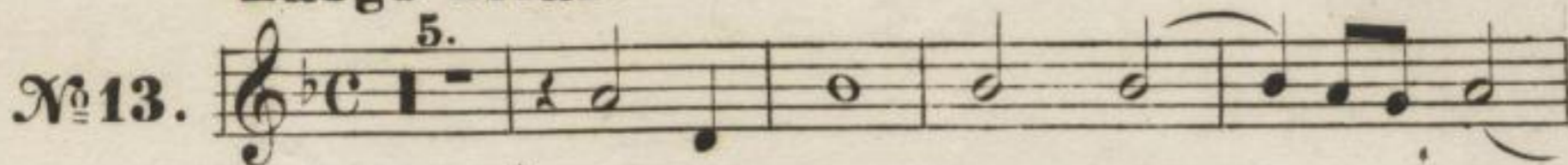
CRUCIFIXUS.

Preis dem Heiland.

ALTO I.

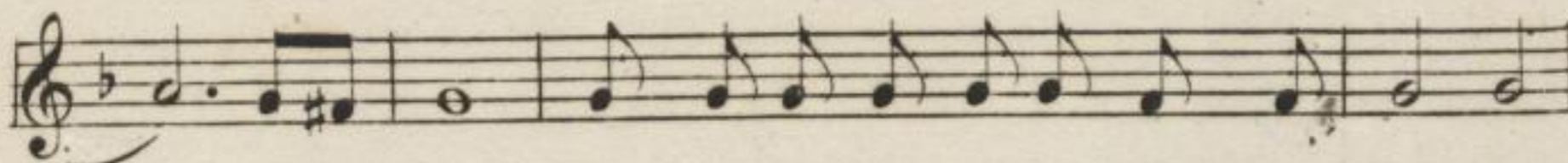
Largo assai.

Lotti.



N^o 13.

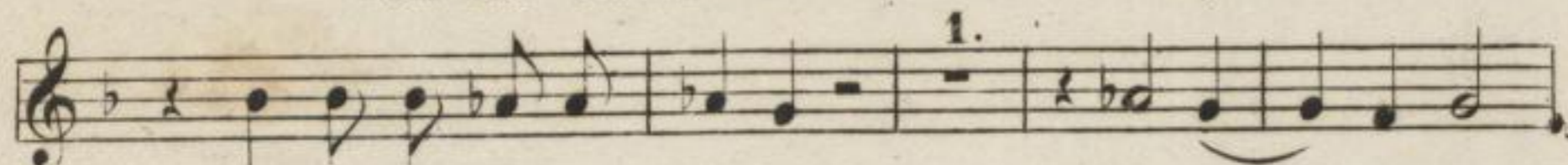
Cru - ei - fi - xus, cru - ei - fi -
Preis dem Hei - land, Preis dem Hei -



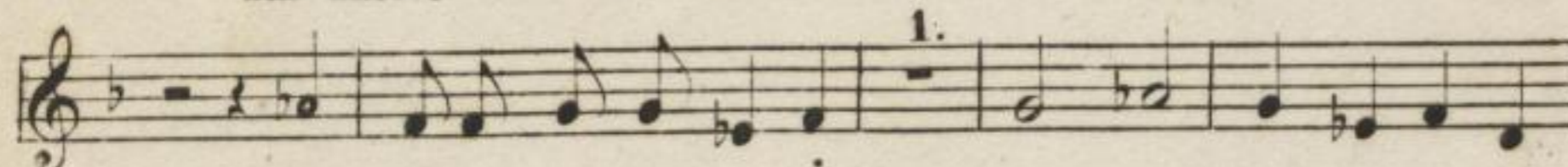
— — — xus, cru - ei - fi - xus e - ti - am pro no - bis,
— — — land, Preis dem Hei - land, der am Stamm des Kreu - zes,



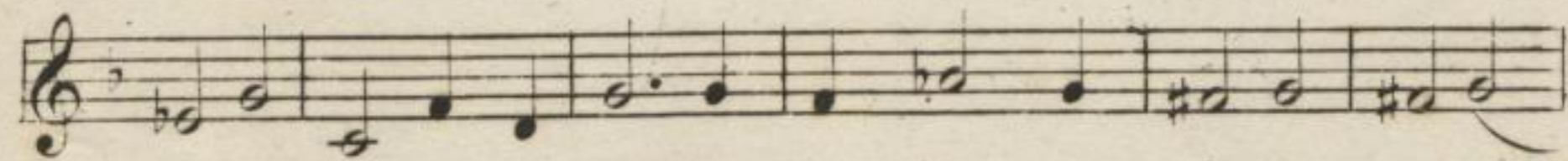
e - ti - am pro no - bis,
der am Stamm des Kreu - zes,



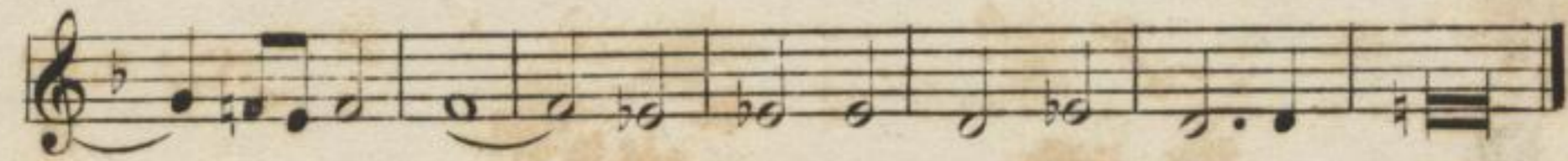
sub Ponti - o Pi - la - to pas - sus,
um unsrer Sün - den wil - len schmach - voll,



sub Ponti - o Pi - la - to pas — — —
um unsrer Sün - den wil - len schmach — — —



— — — sus et se - pul - tus est, pas - sus et se - pul -
— — — voll in den Tod sich gab, schmachvoll in den Tod



— — — — — tus et se - pul — — — tus est.
— — — — — sich gab, den Tod — — — — — sich gab.

B. & B. 2281. o.

Mus. 2159-D-501



hs

Handwritten text at the top of the page, possibly a title or reference number, including the word "GATHE" and "1770".

Handwritten title and subtitle, possibly "Kriegs- und Wehrlied" and "1770".

Handwritten musical score consisting of ten staves of music with lyrics written below each staff. The text is mirrored and appears to be bleed-through from the reverse side of the page.

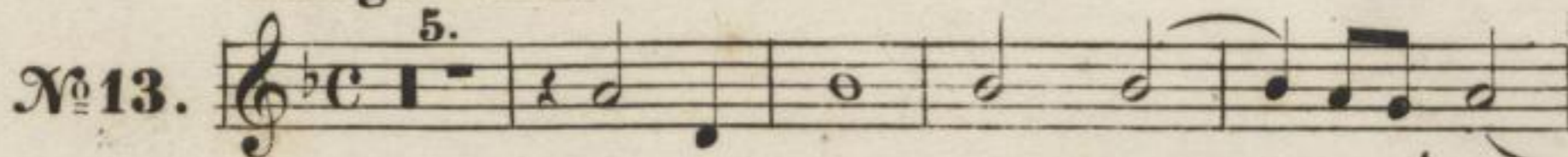
CRUCIFIXUS .

Preis dem Heiland.

ALTO I.

Largo assai.

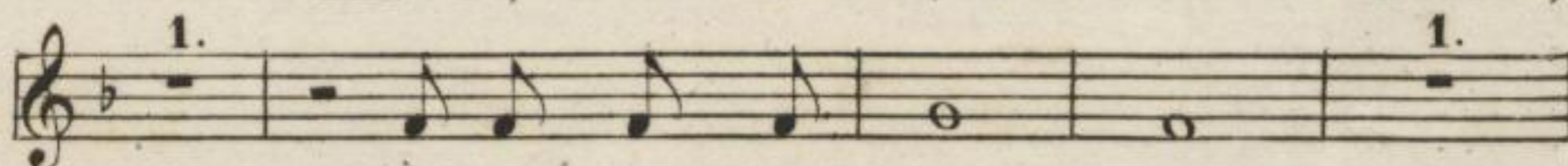
Lotti .



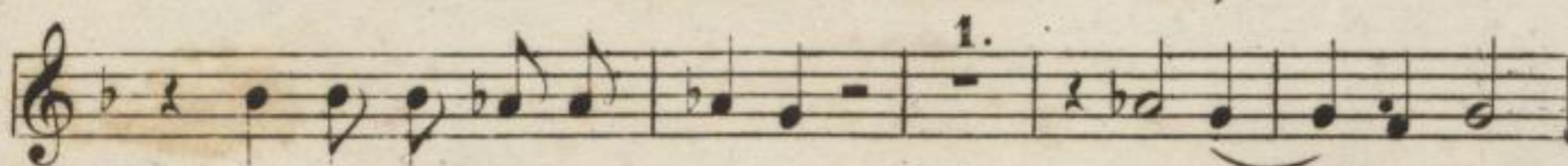
Cru - ei - fi - xus, cru - ei - fi -
Preis dem Hei - land, Preis dem Hei -



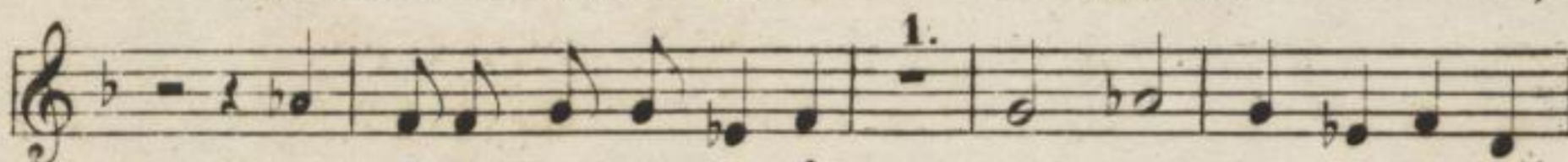
xus, cru - ei - fi - xus e - ti - am pro no - bis,
land, Preis dem Hei - land, der am Stamm des Kreu - zes,



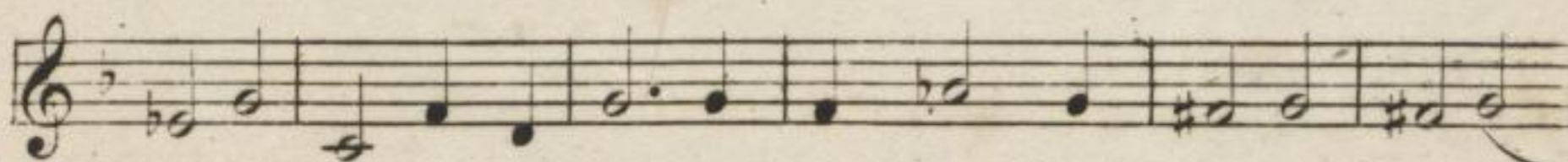
e - ti - am pro no - bis,
der am Stamm des Kreu - zes,



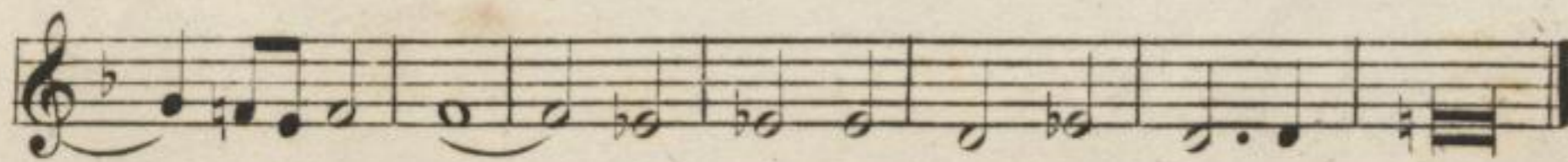
sub Ponti - o Pi - la - to pas - sus,
um unsrer Sün - den wil - len schmach - voll,



sub Ponti - o Pi - la - to pas - sus
um unsrer Sün - den wil - len schmach



sus et se - pul - tus est, pas - sus et se - pul -
voll in den Tod sich gab, schmachvoll in den Tod



tus et se - pul - tus est .
sich gab, den Tod sich gab .

B.&B. 2281. o.

Mus. 2159 - D - 501

Faint text at the top of the page, possibly a title or header.

TRACCIERUNG

Handwritten text below the title, possibly a subtitle or author information.

ALTO I

Large musical staff with notes and clef.

Complex block containing musical notation and some illegible text.

Text block between musical staves, possibly lyrics or performance instructions.

Complex block containing musical notation and some illegible text.

Text block between musical staves, possibly lyrics or performance instructions.

Complex block containing musical notation and some illegible text.

Text block between musical staves, possibly lyrics or performance instructions.

Complex block containing musical notation and some illegible text.

Text block between musical staves, possibly lyrics or performance instructions.

Complex block containing musical notation and some illegible text.

Text block between musical staves, possibly lyrics or performance instructions.

Complex block containing musical notation and some illegible text.

Text block between musical staves, possibly lyrics or performance instructions.

Complex block containing musical notation and some illegible text.

Text block between musical staves, possibly lyrics or performance instructions.

Complex block containing musical notation and some illegible text.





K.L.G.

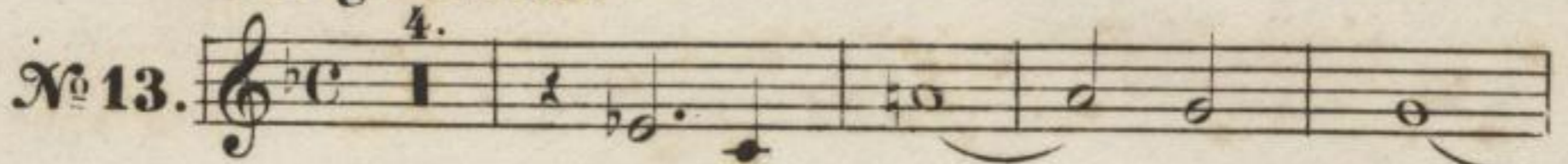
CRUCIFIXUS.

Preis dem Heiland.

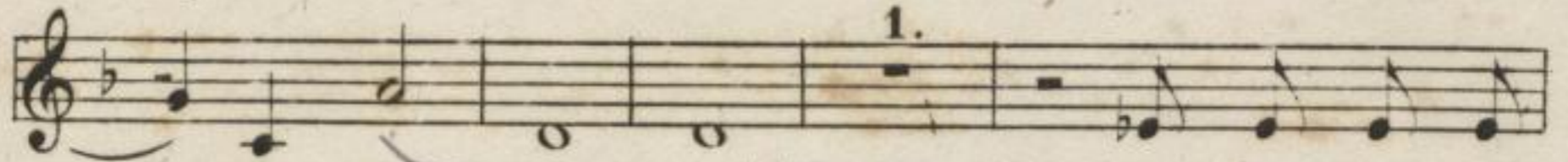
ALTO II.

Largo assai.

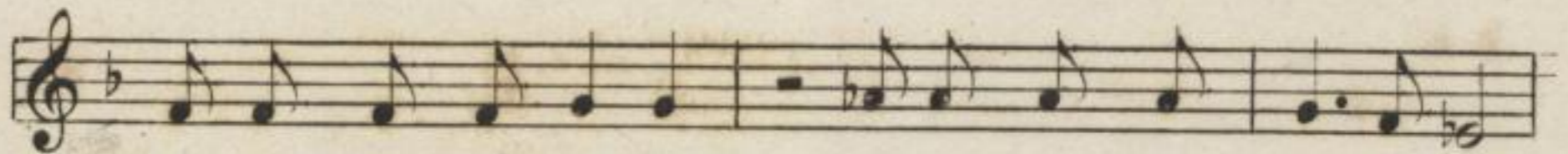
Lotti.



Cru - ci - fi - xus, cru -
Preis dem Hei - land, Preis



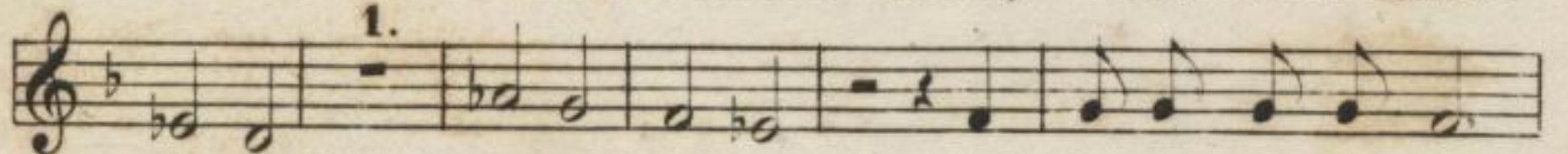
ci - fi - xus, cru - ci - fi - xus,
dem Hei - land, Preis dem Hei - land,



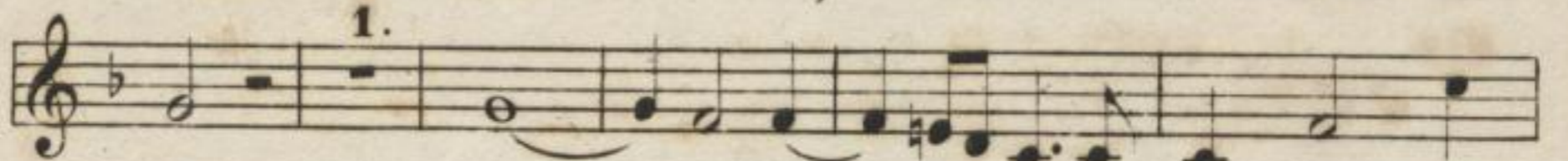
e - ti - am pro no - bis, e - ti - am pro no -
der am Stamm des Kreuzes, der am Stamm des Kreuzes



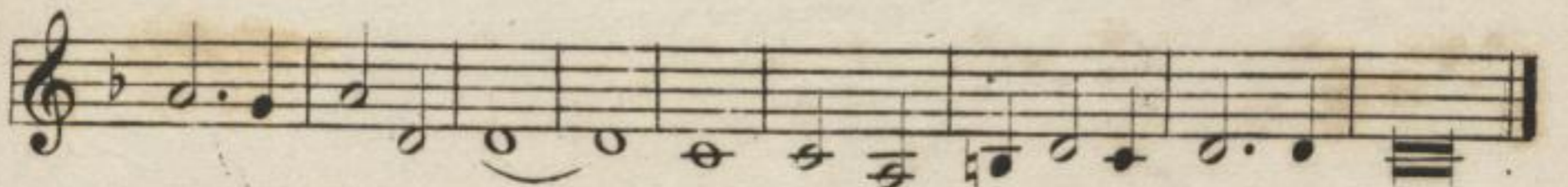
— bis sub Ponti - o Pi - la - to, sub Ponti - o Pi -
— zes um unsrer Sünden willen, um unsrer Sünden



la - to pas - sus, sub Ponti - o Pi - la -
willen schmach - voll, um unsrer Sünden wil -



to pas - sus et se - pultus est, pas - sus
len schmach - voll in den Tod sich gab, schmachvoll



et se - pul - tus et se - pul - tus est.
in den Tod sich gab, den Tod sich gab.

B. & B. 2281. 0.

Mus. 2159 - D - 501





Handwritten title and subtitle at the top of the page, including the number '11'.



Lyrics for the first line of the musical score.



Lyrics for the second line of the musical score.



Lyrics for the third line of the musical score.



Lyrics for the fourth line of the musical score.



Lyrics for the fifth line of the musical score.



Lyrics for the sixth line of the musical score.



Lyrics for the seventh line of the musical score.



CRUCIFIXUS.

Preis dem Heiland.

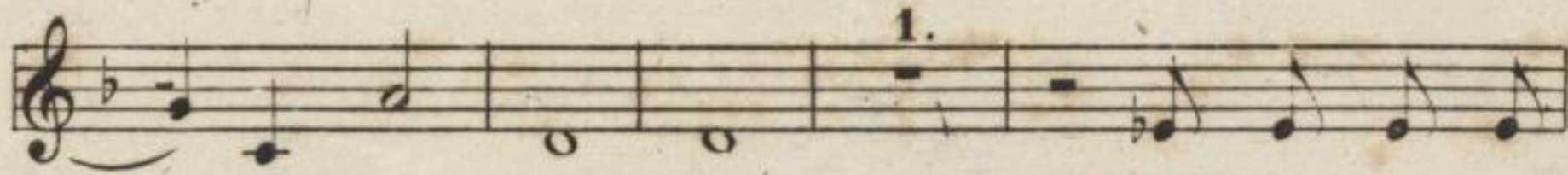
ALTO II.

Largo assai.

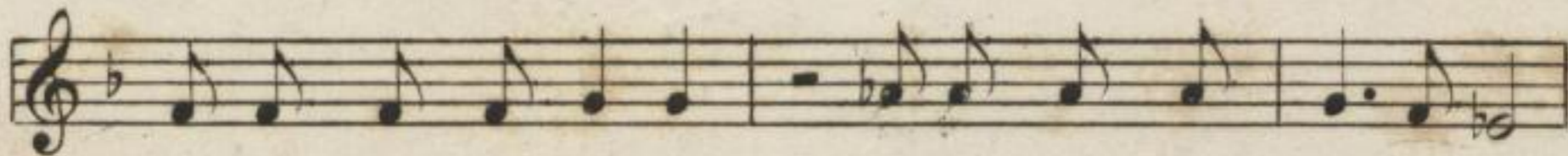
Lotti.



Cru - ei - fi - xus, eru -
Preis dem Hei - land, Preis



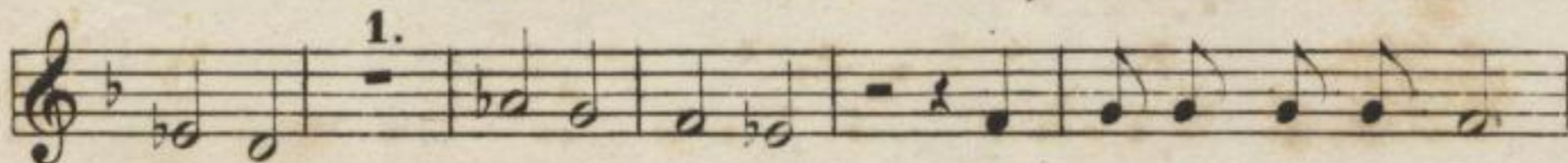
ci - fi - xus, eru - ci - fi - xus,
dem Hei - land, Preis dem Hei - land,



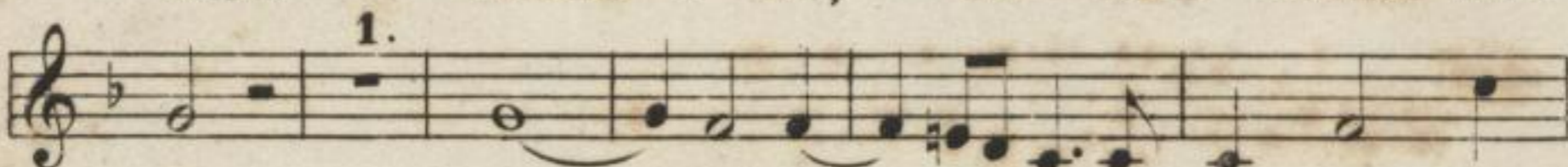
e - ti - am pro no - bis, e - ti - am pro no -
der am Stamm des Kreuzes, der am Stamm des Kreu -



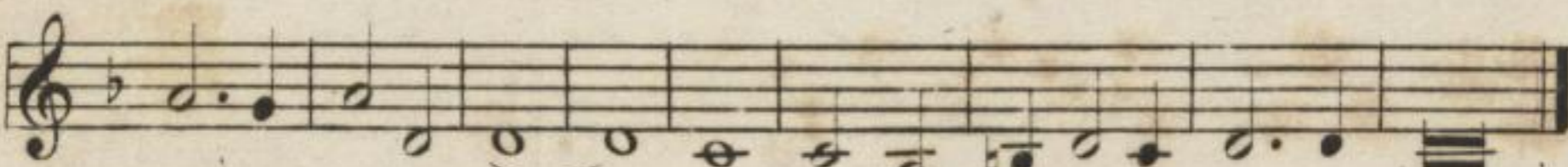
— bis sub Ponti - o Pi - la - to, sub Ponti - o Pi -
— zes um unsrer Sünden willen, um unsrer Sünden



la - to pas - sus, sub Ponti - o Pi - la -
willen schmach - voll, um unsrer Sün - den wil -



to pas - sus et se - pul - tus est, pas - sus
len schmach - voll in den Tod sich gab, schmachvoll



et se - pul - tus et se - pul - tus est.
in den Tod sich gab, den Tod sich gab.

B. & B. 2281. o.

Mus. 2159 - D - 501

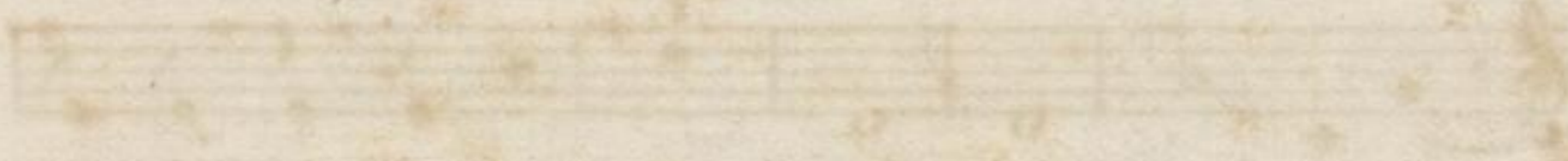




Handwritten title and author information at the top of the page, including the name 'K. H. ...' and '1870'.



First line of lyrics corresponding to the first musical staff.



Second line of lyrics corresponding to the second musical staff.



Third line of lyrics corresponding to the third musical staff.



Fourth line of lyrics corresponding to the fourth musical staff.



Fifth line of lyrics corresponding to the fifth musical staff.



Sixth line of lyrics corresponding to the sixth musical staff.



Seventh line of lyrics corresponding to the seventh musical staff.

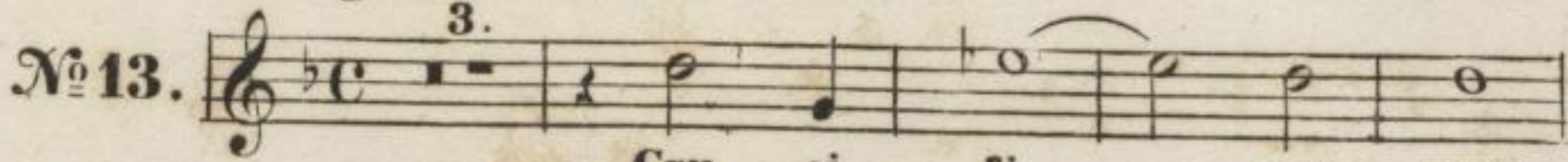


CRUCIFIXUS.

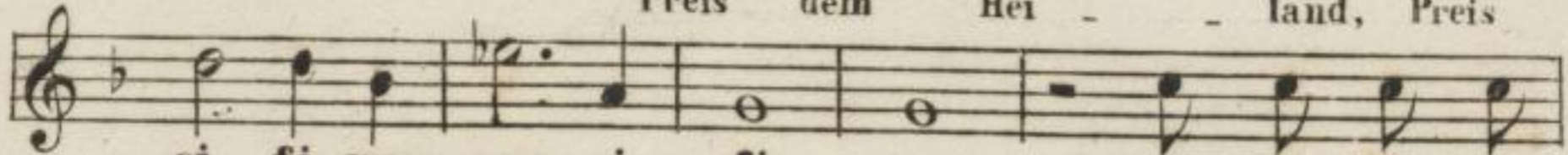
Preis dem Heiland.

Largo assai. TENORE I.

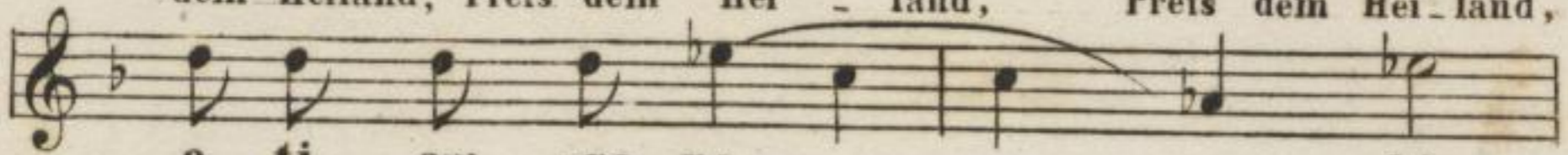
Lotti.



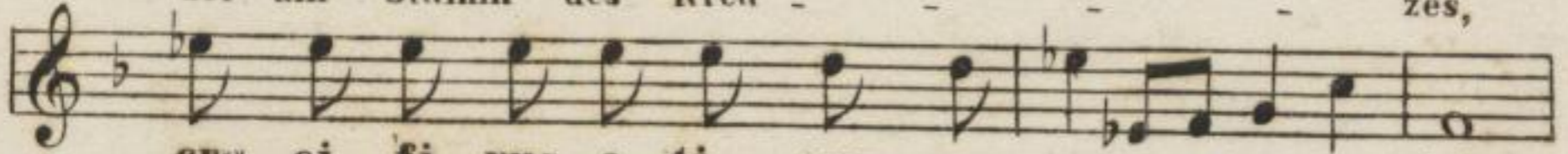
Cru - ei - fi - xus, eru -
Preis dem Hei - land, Preis



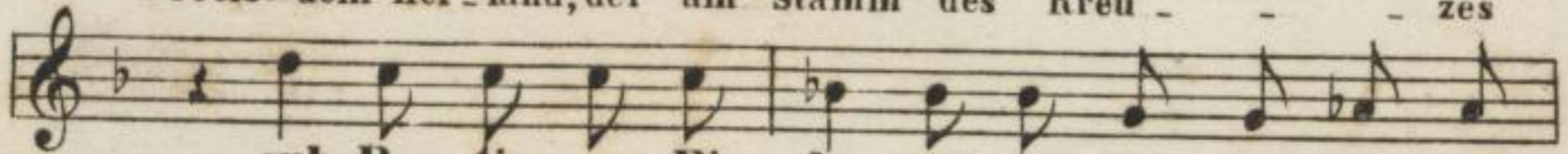
ei - fi - xus, eru - ei - fi - xus,
dem Heiland, Preis dem Hei - land, Preis dem Hei - land,



e - ti - am pro no - bis,
der am Stamm des Kreu - zes,



eru - ei - fi - xus e - ti - am pro no - bis
Preis dem Hei - land, der am Stamm des Kreu - zes



sub Pon - ti - o Pi - la - to, sub Pon - ti - o Pi -
um uns - rer Sün - den wil - len, um uns - rer Sün - den



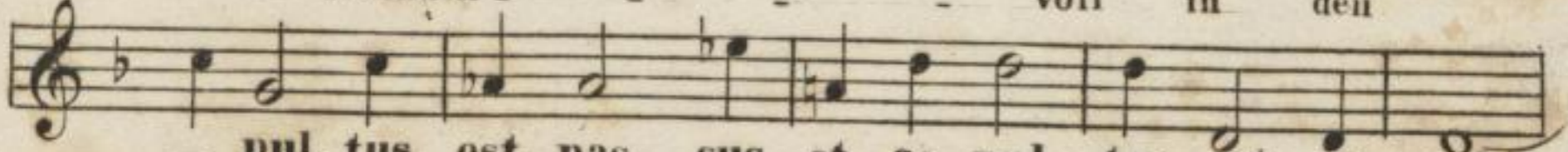
la - to, sub Pon - ti - o Pi - la - to, sub
wil - len, um uns - rer Sün - den wil - len, um



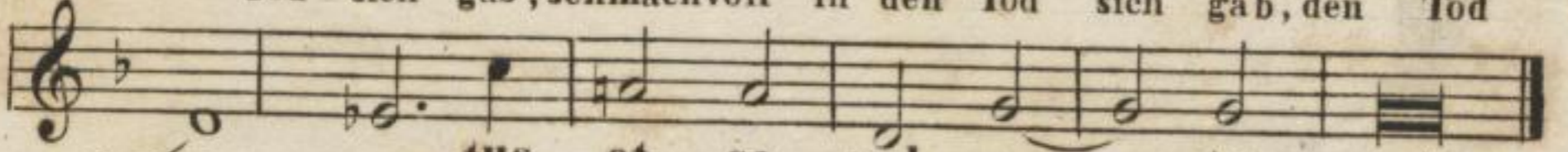
Pon - ti - o Pi - la - to, sub Pon - ti - o Pi - la - to,
uns - rer Sün - den wil - len, um unsrer Sün - den wil - len,



pas - sus et se - pul -
schmach - voll in den



- pul - tus est, pas - sus et se - pul - tus est, se - pul -
Tod sich gab, schmachvoll in den Tod sich gab, den Tod



- tus et se - pul - tus est.
sich gab, den Tod sich gab.

B.&B.2281. o.

Mus. 2159-D-501



Handwritten title and subtitle at the top of the page, likely identifying the musical work and its composer.

Handwritten musical score consisting of approximately 12 staves. Each staff contains musical notation (notes, rests, clefs) and is accompanied by handwritten lyrics in a cursive script. The paper shows signs of age, including yellowing and foxing.

Handwritten text at the bottom of the page, possibly a signature or a date.

CRUCIFIXUS.

Preis dem Heiland.

Largo assai. TENORE I.

Lotti.

N^o 13. 

Cru - ei - fi - xus, eru -
Preis dem Hei - land, Preis
ei - fi - xus, eru - ei - fi - xus, eru - ei - fi - xus,
dem Heiland, Preis dem Hei - land, Preis dem Hei - land,
e - ti - am pro no - bis,
der am Stamm des Kreu - zes,
eru - ei - fi - xus e - ti - am pro no - bis
Preis dem Hei - land, der am Stamm des Kreu - zes
sub Pon - ti - o Pi - la - to, sub Pon - ti - o Pi -
um uns - rer Sün - den wil - len, um uns - rer Sün - den
la - to, sub Pon - ti - o Pi - la - to, sub
wil - len, um uns - rer Sün - den wil - len, um
Pon - ti - o Pi - la - to, sub Pon - ti - o Pi - la - to,
uns - rer Sün - den wil - len, um unsrer Sün - den wil - len,
pas - sus et se -
schmach - voll in den
- pul - tus est, pas - sus et se - pul - tus est, se - pul -
Tod sich gab, schmachvoll in den Tod sich gab, den Tod
- tus et se - pul - tus est.
sich gab, den Tod sich gab.

B.&B.2281. o.

Mus. 2159 - D - 501



Handwritten title and text at the top of the page, including the number '11'.

Multiple staves of handwritten musical notation with lyrics, arranged in a system. The text is mirrored across the staves.





K. L. G.

CRUCIFIXUS.

Preis dem Heiland.

Largo assai. TENORE II.

Lotti .

N^o 13.

Cru - ei - fi - - -
Preis dem Hei - - -

- - - xus, eru - ei - fi - - - xus,
- - - land, Preis dem Hei - - - land,

eru - ei - fi - xus, e - ti - am pro no - bis, eru - ei - fi - xus,
Preis dem Heiland, der am Stamm des Kreuzes, Preis dem Heiland,

e - ti - am pro no - - - bis 1.
der am Stamm des Kreu - - - zes

sub Pon - ti - o Pi - la - to, sub Pon - ti - o Pi - la - to,
um unsrer Sün - den wil - len, um uns - rer Sün - den wil - len,

1. sub Pon - ti - o Pi - la - to, sub
um uns - rer Sün - den wil - len, um

Pon - ti - o Pi - la - - to, sub Pon - ti - o Pi - la -
uns - rer Sün - den wil - len, um uns - rer Sün - den wil -

to pas - sus et se - pul - tus est, pas - sus
len schmach - voll in den Tod sich gab, schmach - voll

et se - pul - - -
in den Tod

tus et se - pul - - - tus est.
sich gab, den Tod sich gab.

B. & B. 2281. o.

Mus. 2159 - D - 501



Handwritten title and possibly a date or reference number at the top of the page.

Main body of the document containing multiple lines of handwritten text and musical notation on staves. The text is extremely faint and illegible due to fading and staining.



K. P. 9

CRUCIFIXUS.

Preis dem Heiland.

Largo assai. TENORE II.

Lotti .

N^o 13.

Cru - ci - fi
Preis dem Hei -

xus, cru - ci - fi xus,
land, Preis dem Hei - land,

eru - ci - fi - xus, e - ti - am pro no - bis, cru - ci - fi - xus,
Preis dem Heiland, der am Stamm des Kreuzes, Preis dem Hei - land,

e - ti - am pro no - bis 1.
der am Stamm des Kreu - zes

sub Pon - ti - o Pi - la - to, sub Pon - ti - o Pi - la - to,
1. um uns - rer Sün - den wil - len, um uns - rer Sün - den wil - len,

sub Pon - ti - o Pi - la - to, sub
um uns - rer Sün - den wil - len, um

Pon - ti - o Pi - la - to, sub Pon - ti - o Pi - la -
uns - rer Sün - den wil - len, um uns - rer Sün - den wil -

to pas - sus et se - pul - tus est, pas - sus
len schmach - voll in den Tod sich gab, schmach - voll

et in den Tod

tus et se - pul - tus est,
sich gab, den Tod sich gab.

B.&B.2281.o.

Mus. 2159 - D - 501



Handwritten title and header information, including the name of the work and the author's name, which are mostly illegible due to fading.

Handwritten musical score consisting of approximately 15 staves. The notation is extremely faint and difficult to decipher, but it appears to be a single melodic line with some rhythmic markings.

K. L. G.



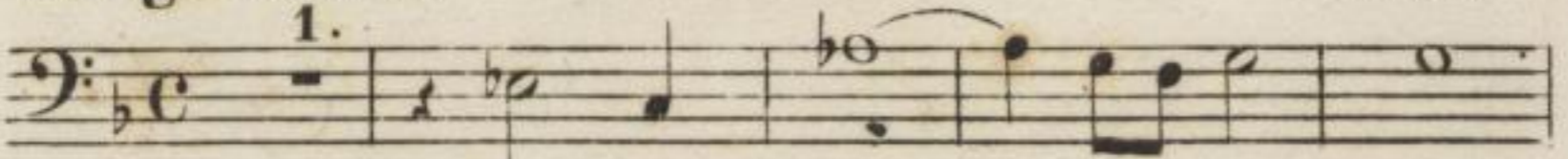
CRUCIFIXUS.

Preis dem Heiland.

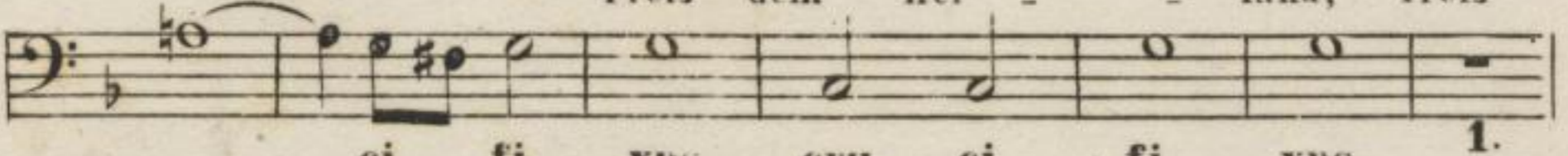
Largo assai.

BASSO I.

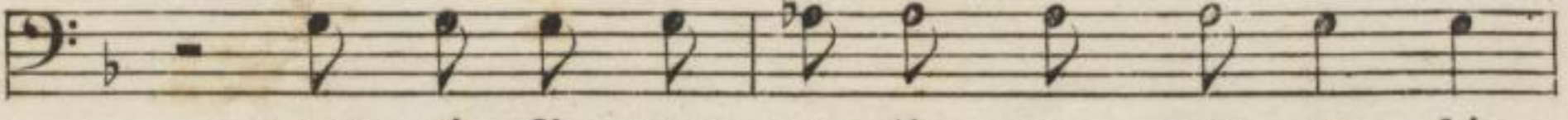
Lotti.

N^o 13. 

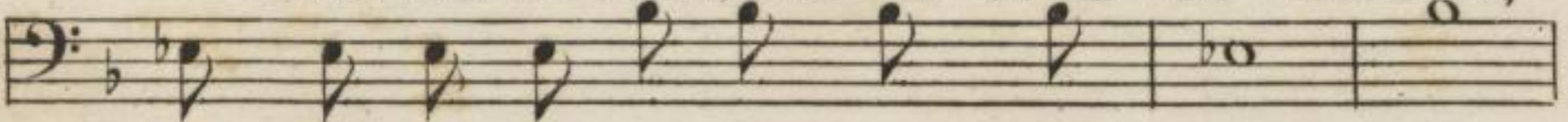
Cru - ei - fi - xus, eru -
Preis dem Hei - land, Preis



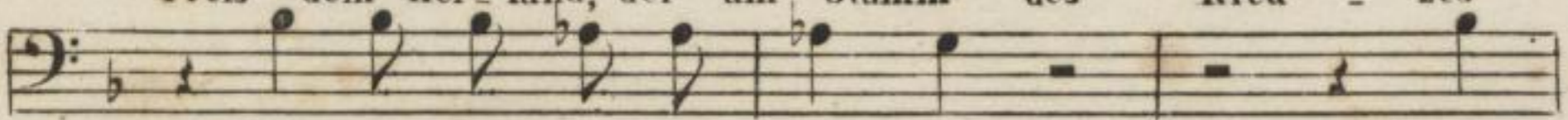
ei - fi - xus, eru - ei - fi - xus, 1.
dem Hei - land, Preis dem Hei - land,



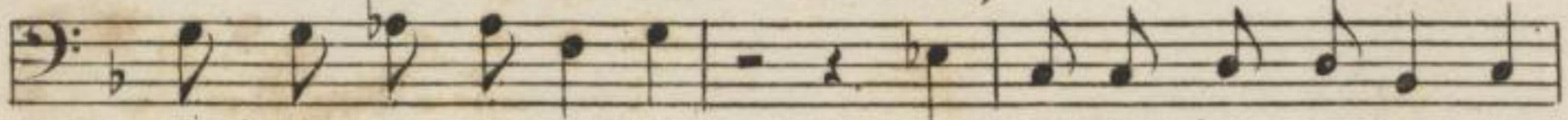
eru - ei - fi - xus. e - ti - am pro no - bis,
Preis dem Hei - land, der am Stamm des Kreu - zes,



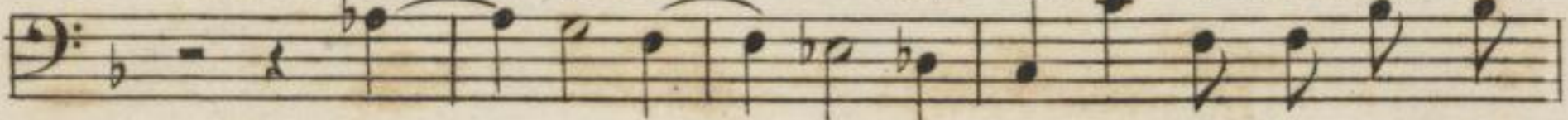
eru - ei - fi - xus e - ti - am pro no - bis
Preis dem Hei - land, der am Stamm des Kreu - zes



sub Pon - ti - o Pi - la - to, sub
um uns - rer Sün - den wil - len, um



Pon - ti - o Pi - la - to, sub Pon - ti - o, Pi - la - to
um uns - rer Sün - den wil - len, um unsrer Sün - den wil - len



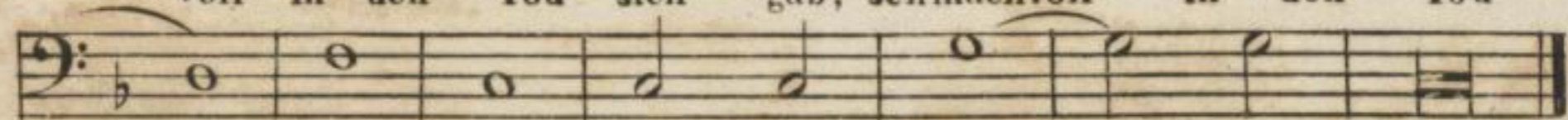
pas - sus, sub Pon - ti - o Pi -
schmach - voll, um uns - rer Sün - den



la - to, sub Pon - ti - o Pi - la - to pas -
wil - len, um uns - rer Sün - den wil - len schmach



sus et se - pul - tus est, pas - sus et se - pul -
voll in den Tod sich gab, schmachvoll in den Tod



tus et se - pul - tus est .
sich gab, den Tod sich gab .

B.&R. 2281. o.

Mus. 2159-D-501



49

Handwritten title and subtitle at the top of the page, likely identifying the musical piece and its composer.

Main body of the manuscript containing multiple staves of musical notation and corresponding lyrics. The text is significantly faded and difficult to read.



K.L.G.

CRUCIFIXUS.

Preis dem Heiland.

BASSO I.

Largo assai.

Lotti.

N^o 13.

Cru - ei - fi - xus, eru -
Preis dem Hei - land, Preis

ei - fi - xus, eru - ei - fi - xus, 1.
dem Hei - land, Preis dem Hei - land,

eru - ei - fi - xus e - ti - am pro no - bis,
Preis dem Hei - land, der am Stamm des Kreu - zes,

eru - ei - fi - xus e - ti - am pro - no - bis
Preis dem Hei - land, der am Stamm des Kreu - zes

sub Pon - ti - o Pi - la - to, sub
um uns - rer Sün - den wil - len, um

Pon - ti - o Pi - la - to, sub Pon - ti - o Pi - la - to
um uns - rer Sün - den wil - len, um unsrer Sün - den wil - len

pas - sus, sub Pon - ti - o Pi -
schmach voll, um uns - rer Sün - den

la - to, sub Pon - ti - o Pi - la - to pas -
wil - len, um uns - rer Sün - den wil - len schmach

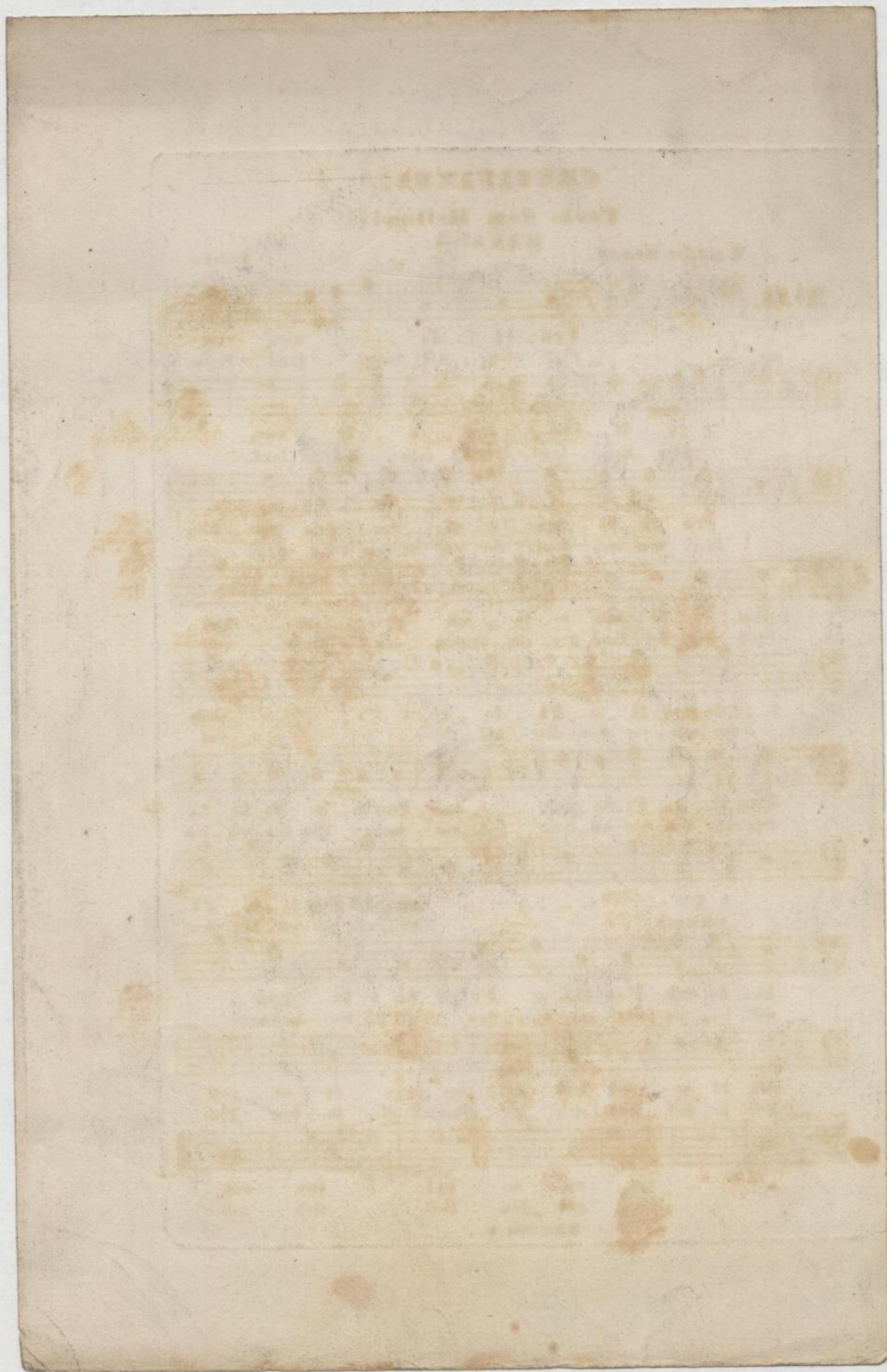
sus et se - pul - tus est, pas - sus et se - pul -
voll in den Tod sich gab, schmachvoll in den Tod

tus et se - pul - tus est .
sich gab, den Tod sich gab .

B.&R. 2281. o.

Mus. 2159-D-501





K. L. G.



CRUCIFIXUS.

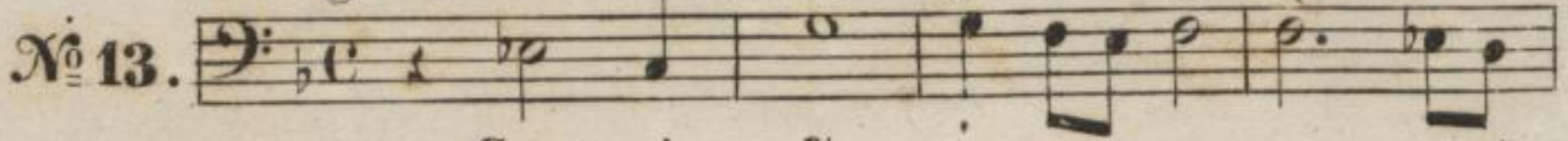
Preis dem Heiland.

BASSO II.

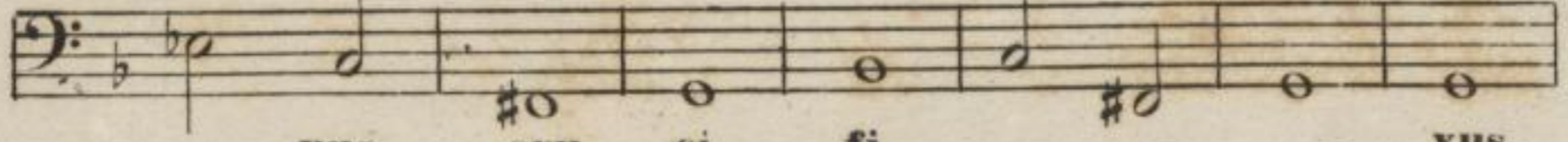
Lotti.

Largo assai.

N^o 13.



Cru - ci - fi
Preis dem Hei -



- xus, cru - ci - fi - xus,
- land, Preis dem Hei - land,



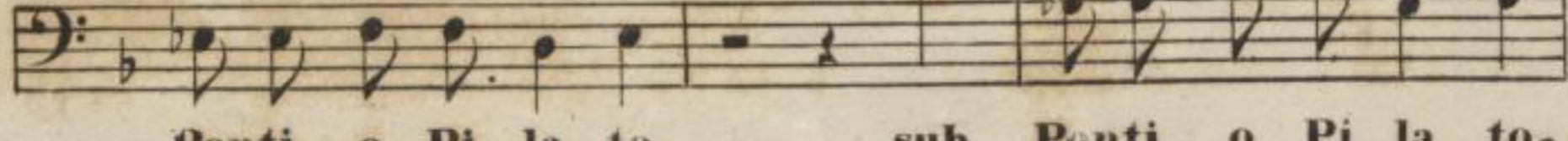
eru - ci - fi - xus e - ti - am pro no - bis, eru - ci - fi - xus,
Preis dem Heiland, der am Stamm des Kreuzes, Preis dem Hei - land,



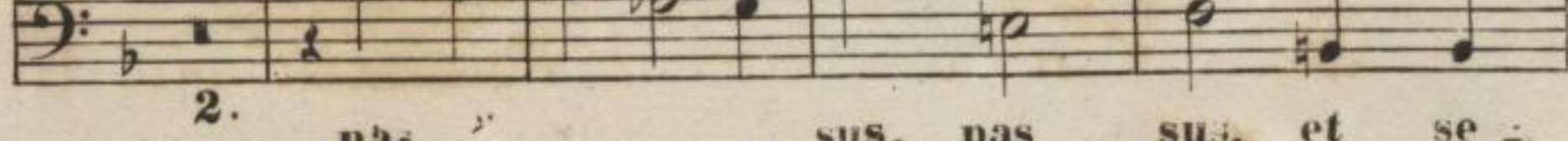
eru - ci - fi - xus e - ti - am pro no - bis
Preis dem Hei - land, der am Stamm des Kreu - zes



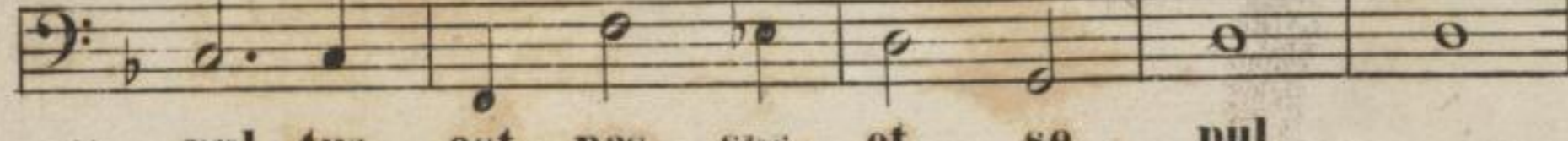
sub Pon - ti - o Pi - la - to, sub
um uns - rer Sün - den wil - len, um



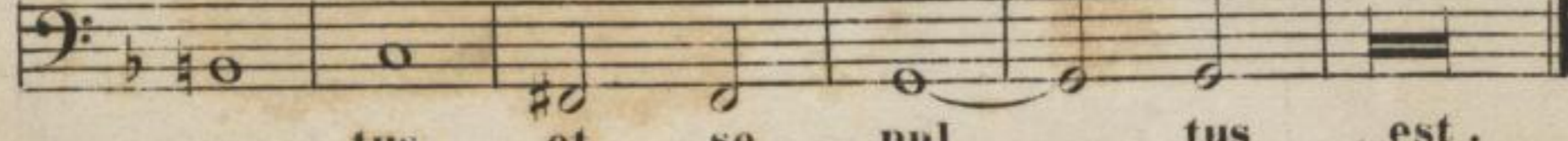
Ponti - o Pi - la - to, sub Ponti - o Pi - la - to,
unsrer Sün - den wil - len, um unsrer Sün - den wil - len



2. pas - sus, pas - sus, et se -
schmach - voll, schmach - voll, in den



pul - tus est, pas - sus, et se - pul -
Tod sich gab, schmachvoll in den Tod

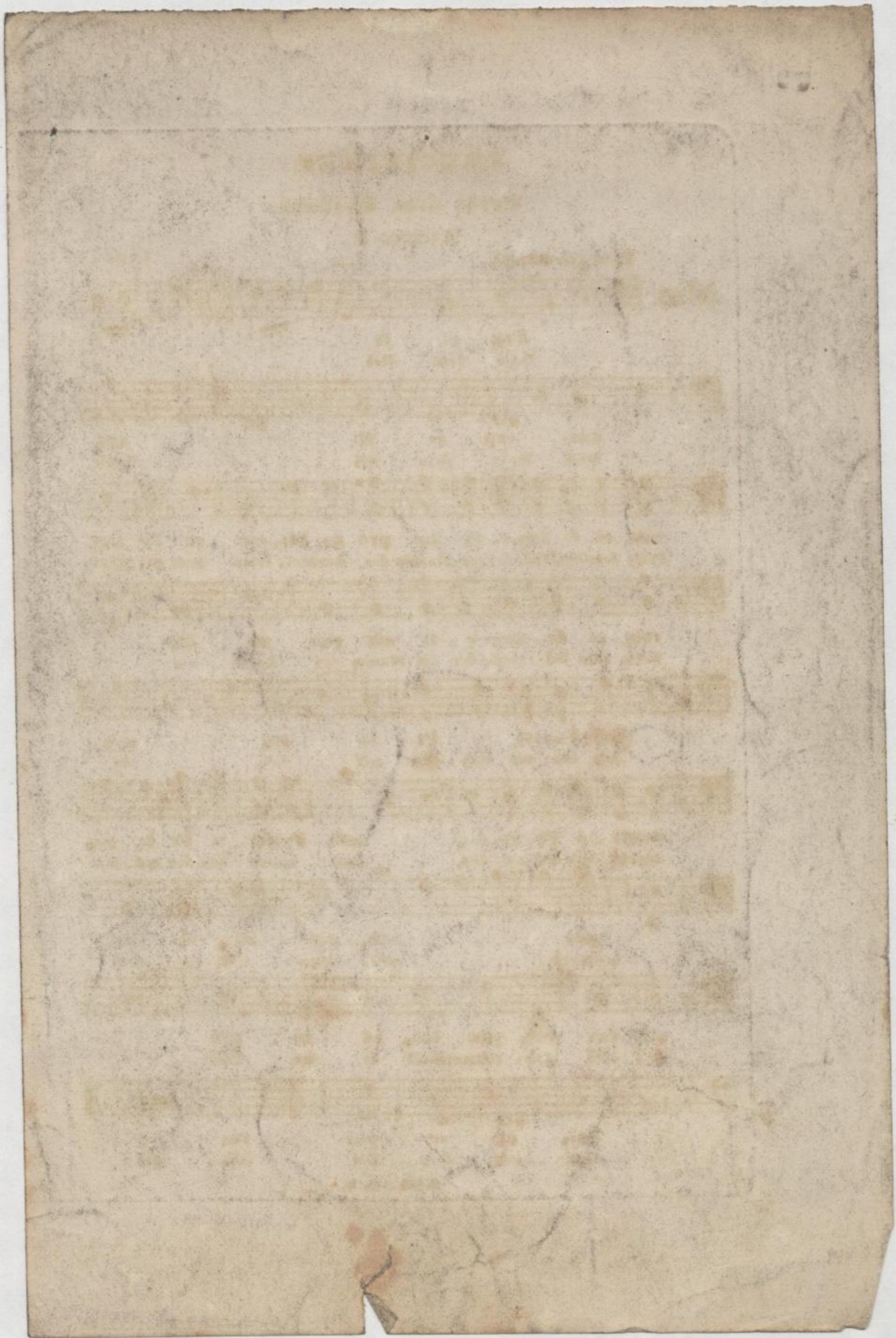


- tus, et se - pul - tus est.
sich gab, den Tod sich gab.

B.&B. 2281. o.

Mus. 2159 - D - 501





K.P.G.



CRUCIFIXUS.

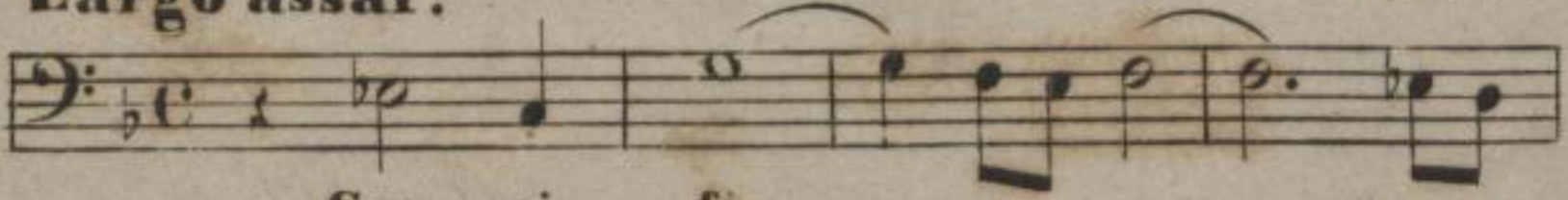
Preis dem Heiland.

BASSO II.

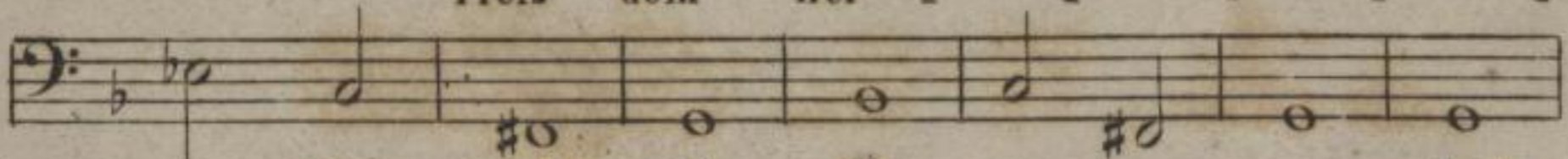
Largo assai.

Lotti.

N^o 13.



Cru - ei - fi -
Preis dem Hei -



- xus, cru - ei - fi - xus,
- land, Preis dem Hei - land,



eru - ei - fi - xus e - ti - am pro no - bis, cru - ei - fi - xus,
Preis dem Heiland, der am Stamm des Kreuzes, Preis dem Heiland,

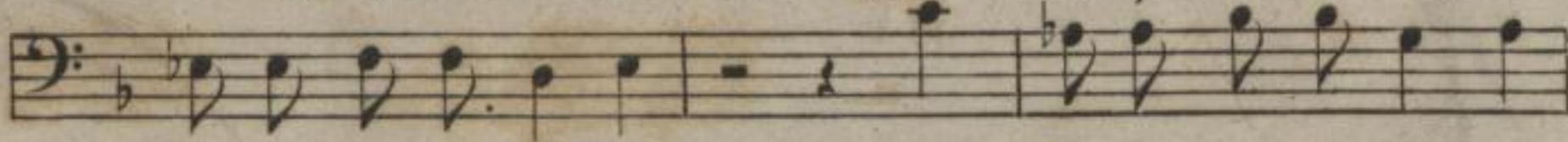


eru - ei - fi - xus e - ti - am pro no - bis
Preis dem Heiland, der am Stamm des Kreu - zes

1.



sub Pon - ti - o Pi - la - to, sub
um uns - rer Sün - den wil - len, um



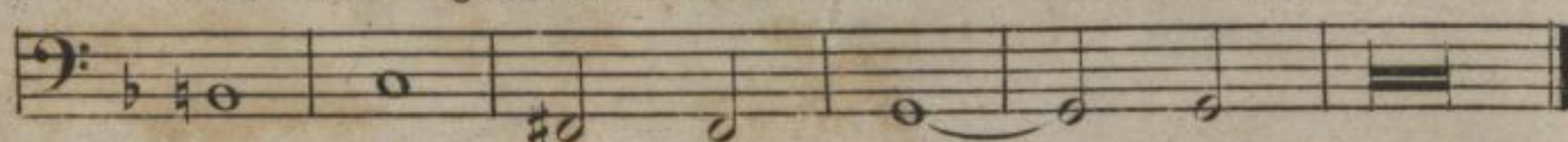
Ponti - o Pi - la - to, sub Ponti - o Pi - la - to,
unsrer Sün - den wil - len, um unsrer Sün - den wil - len



2. pas - sus, pas - sus, et se -
schmach - voll, schmach - voll, in den



pul - tus est, pas - sus, et se - pul -
Tod sich gab, schmachvoll in den Tod



- tus, et se - pul - tus est.
sich gab, den Tod sich gab.

B.&B. 2281. o.

Mus. 2159-D-501



(Mus. Q. 8626)