

Tafel III.

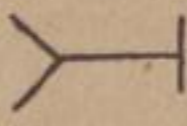
Süßaltiger. Y

Früherer.

folgender.

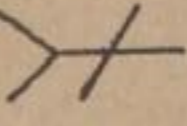
K = Klemmung,
sängstische.

177.



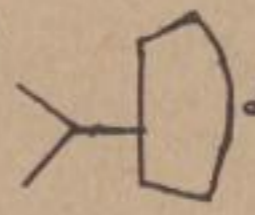
1410 K
1480 Fensberg
1497 Miltzen,
Danzgröben,
v. a.

178.



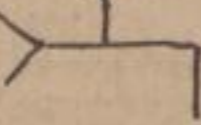
1410 K
Quiffain,
drotzigberg,
Pisa,
Dominikendorf,
Kappan.

179.



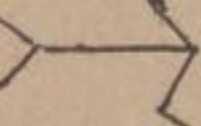
1410 K

180.



1410 K

181.



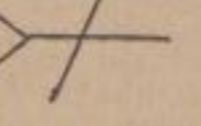
1420 K
1450 Miltzen,
v. a.

182.



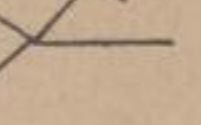
1470 K
Kappan, v. a.
1450 Miltzen,
v. a.

183.



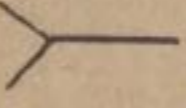
1512 Lemmings,
a. l. h. d. r. f. e.

184.



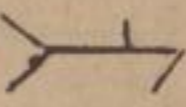
1450 X

185.



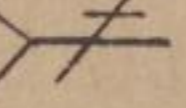
1456 Saitzen,
v. a.
1473 Gölitz,
Niedau.
1517 Jörnstein
H. D. a.

186.



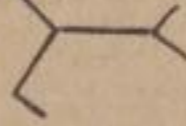
1456
Saitzen, v. a.

187.



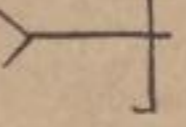
1480
Saitzen, v. a.
1466
Saitzen,
Niedau.

188.



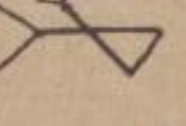
1480
Lyn. v. a.
Lamm / d.
1450
Miltzen,
v. a.

189.



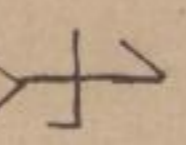
1480
Saitzen,
Hilfsberg.

190.



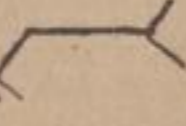
Saitzen,
v. a.

191 = 194.



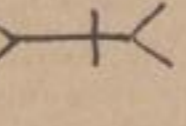
1520
Saitzen,
Hilfsberg,
Kringau.

192.



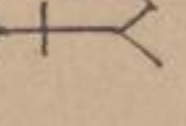
1514
Göta.

193.



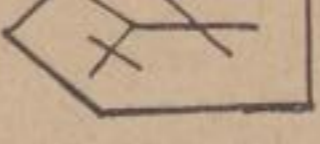
1497
Jörnstein.

194.



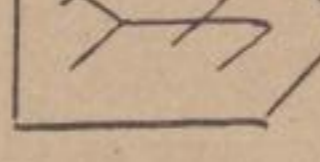
1500
Lützowitz,
Gölitz,
Unterwied.

195.



1450 ?
Zittau,
v. a.

196.



Math. Zimmermann.
1575 Lützowitz, Jand.
1586 Zittau,
Rosenbrunn.
[1553-59 Zittau, Jof. d. r. f. e.,
Fuchsen.
[1569-71 Fuchsenort,
d. d. r. f. e., Jand.]