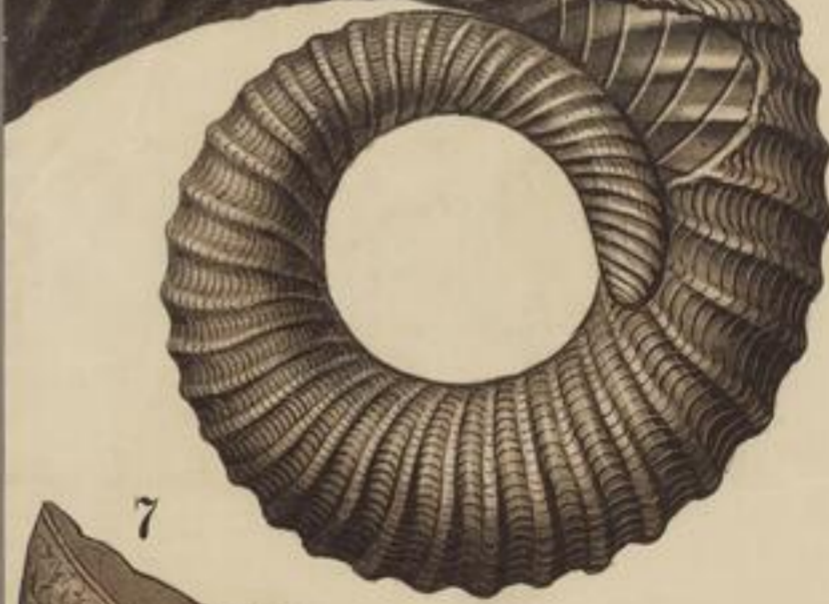
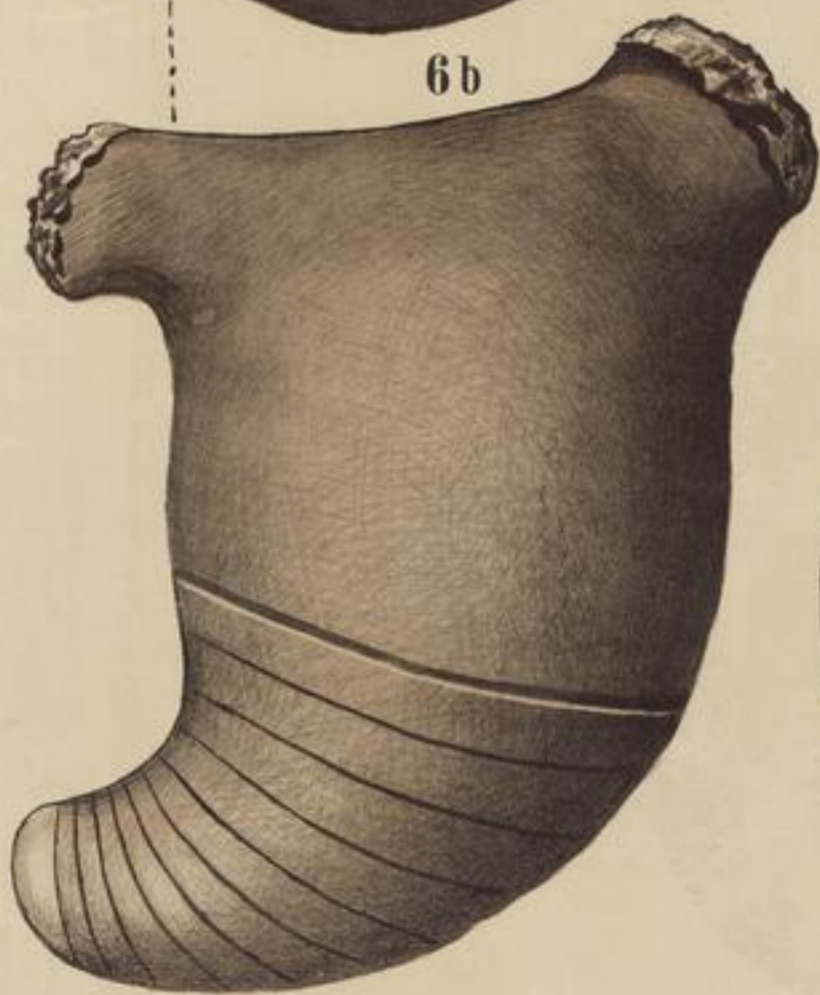
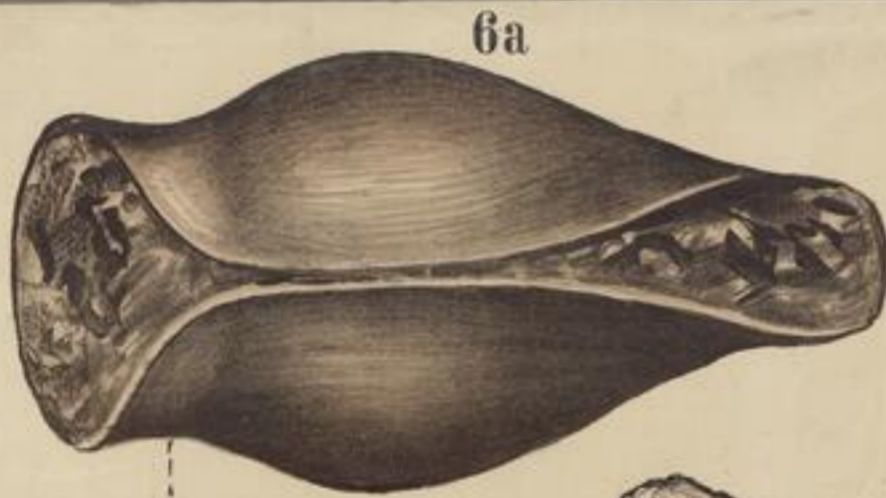
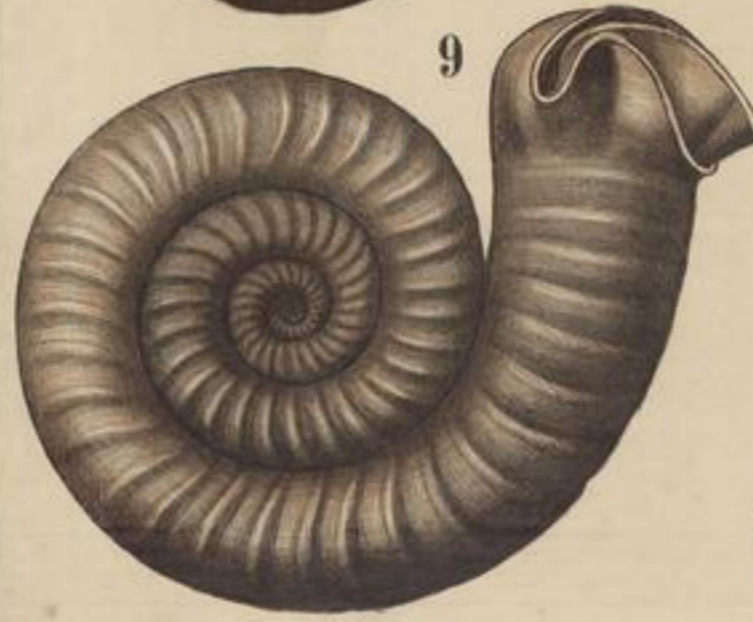
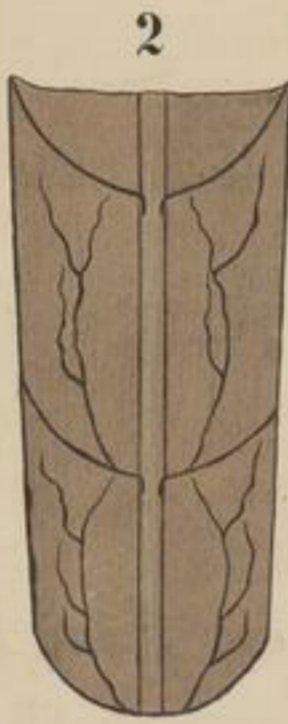
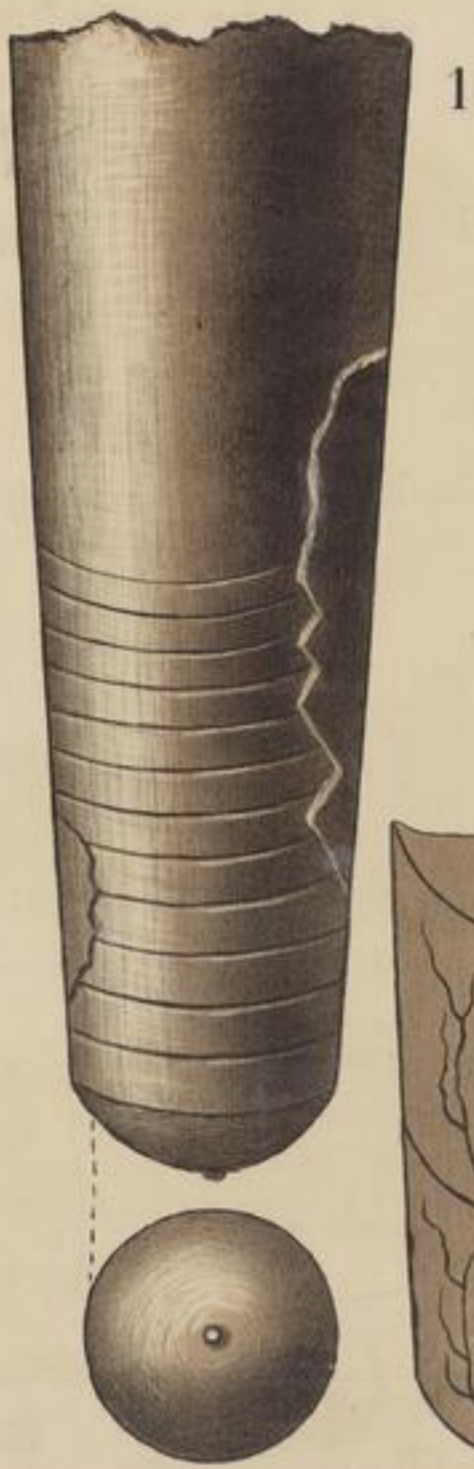


Cephalopoda.

21. Mollusca.

Tetrabranchiata.



1. Orthoceras timidum. 2. O. Michelini. 3. Endoceras duplex 4. Cyrtoceras
7. Ph. Loveni. 8. Ascoceras Bohemicum. 9. Ophidoceras

corbulatum. 5. Gomphoceras Bohemicum. 6. Phragmoceras Broderipi.
simplex. 10. Lituides lituus. 11. Trochoceras optatum.

Zinnl. Palaeontologische Wandtafel. Taf. XXX.

Druck und Verlag von Theodor Fischer in Cassel.