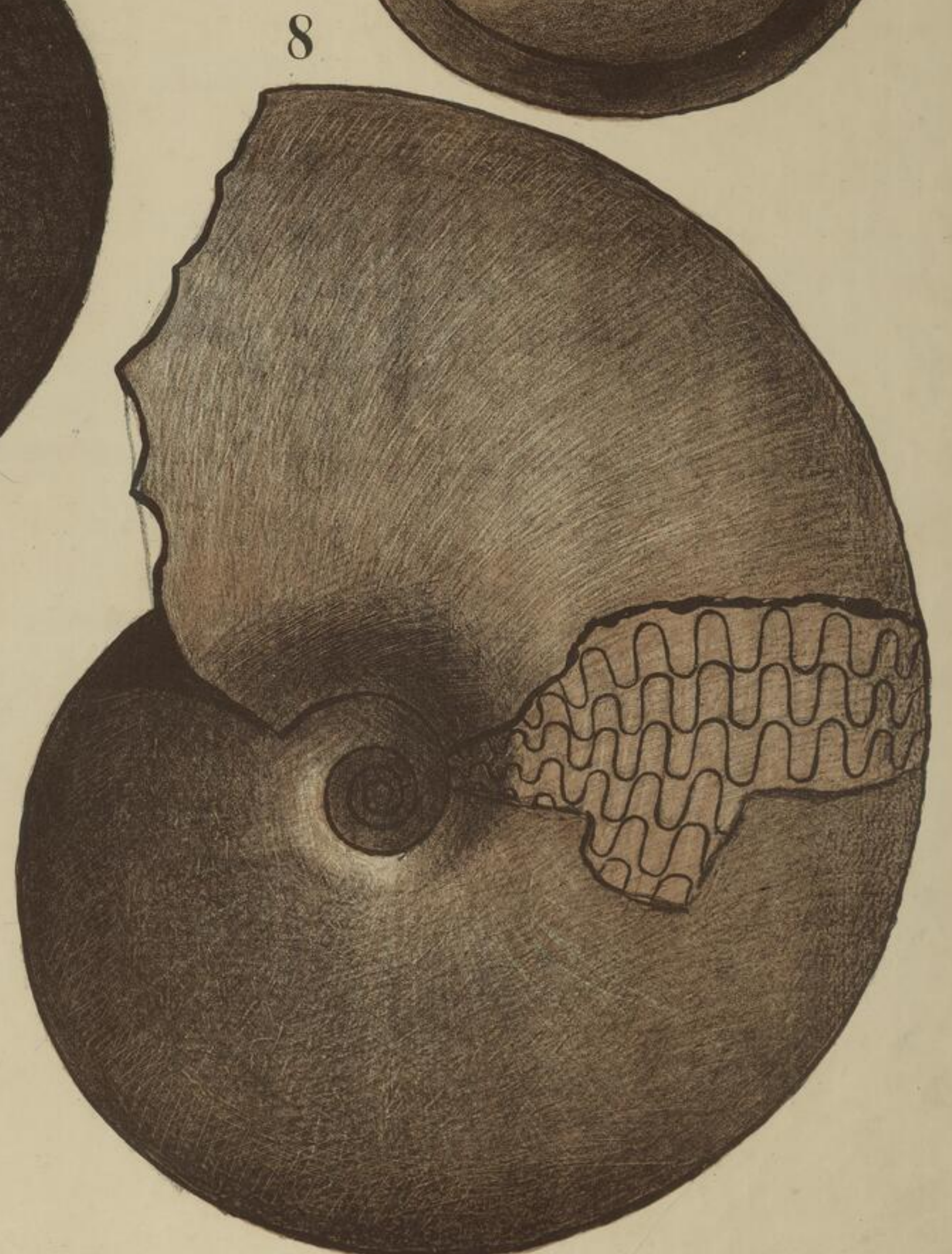
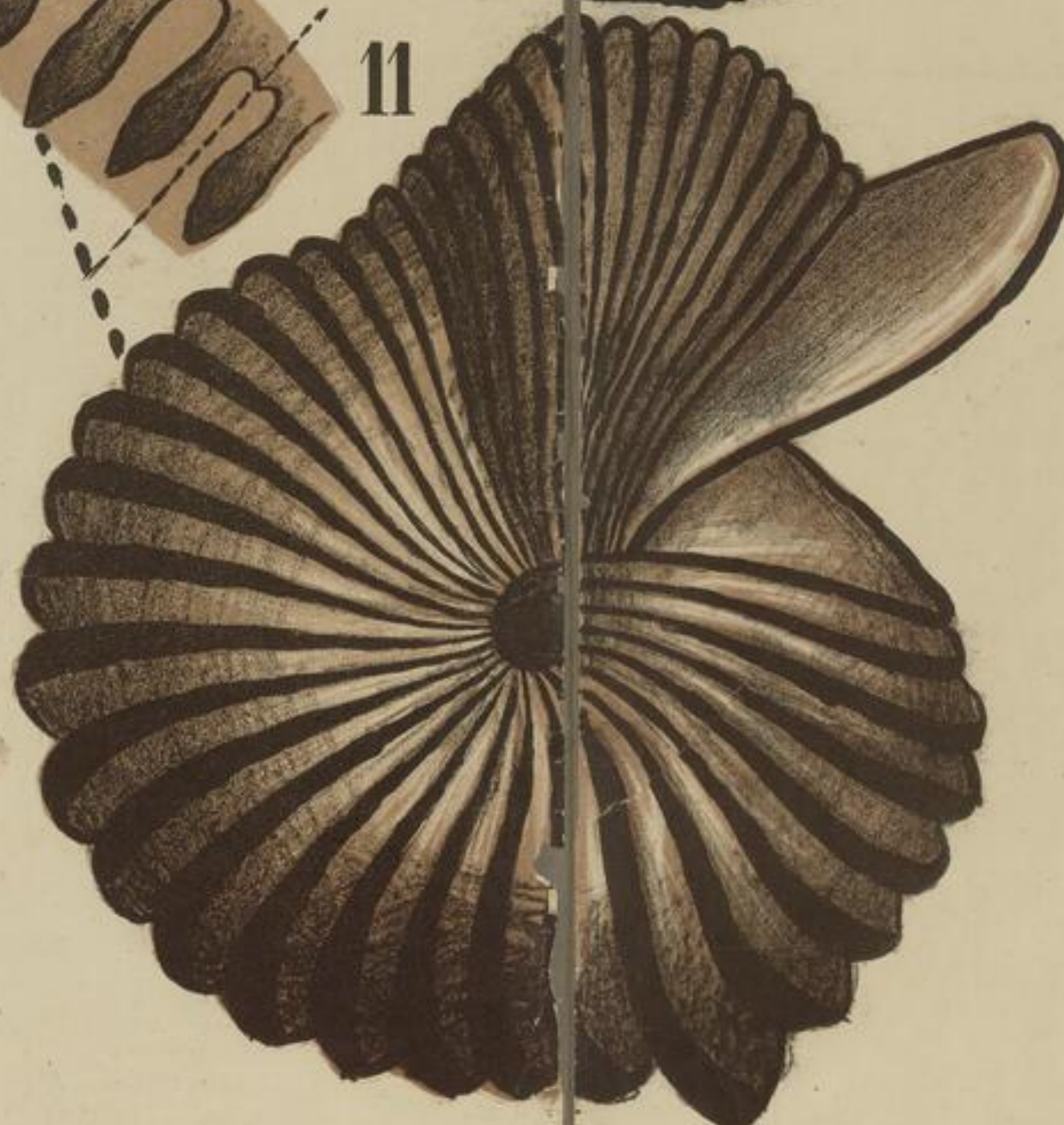
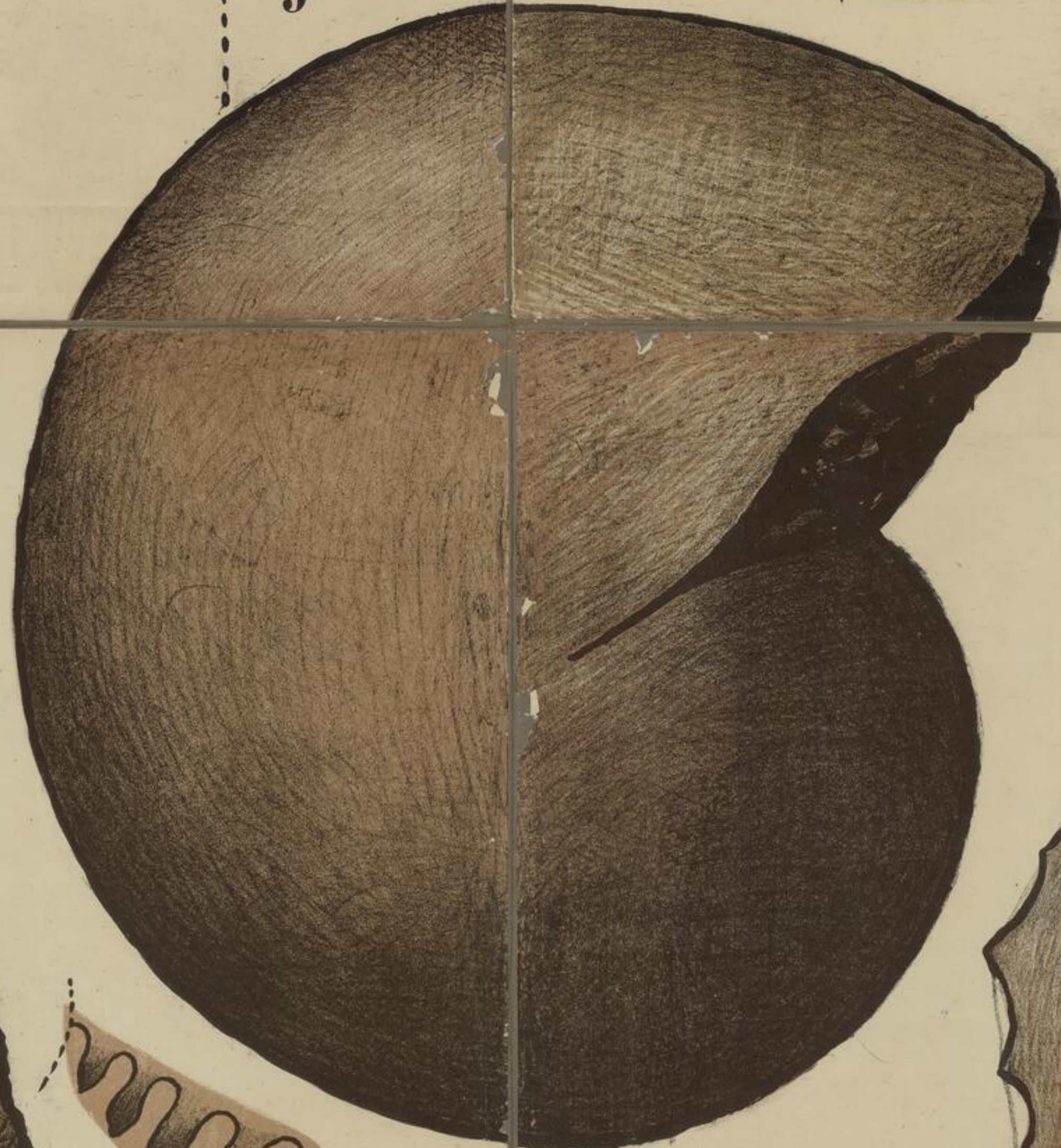
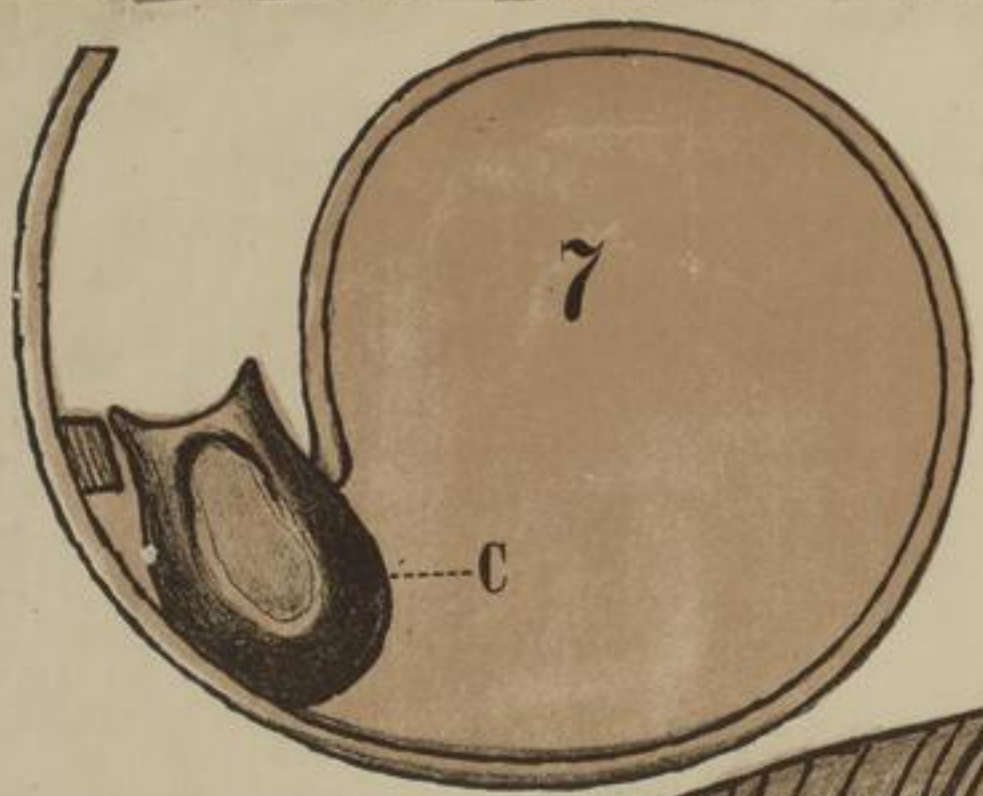
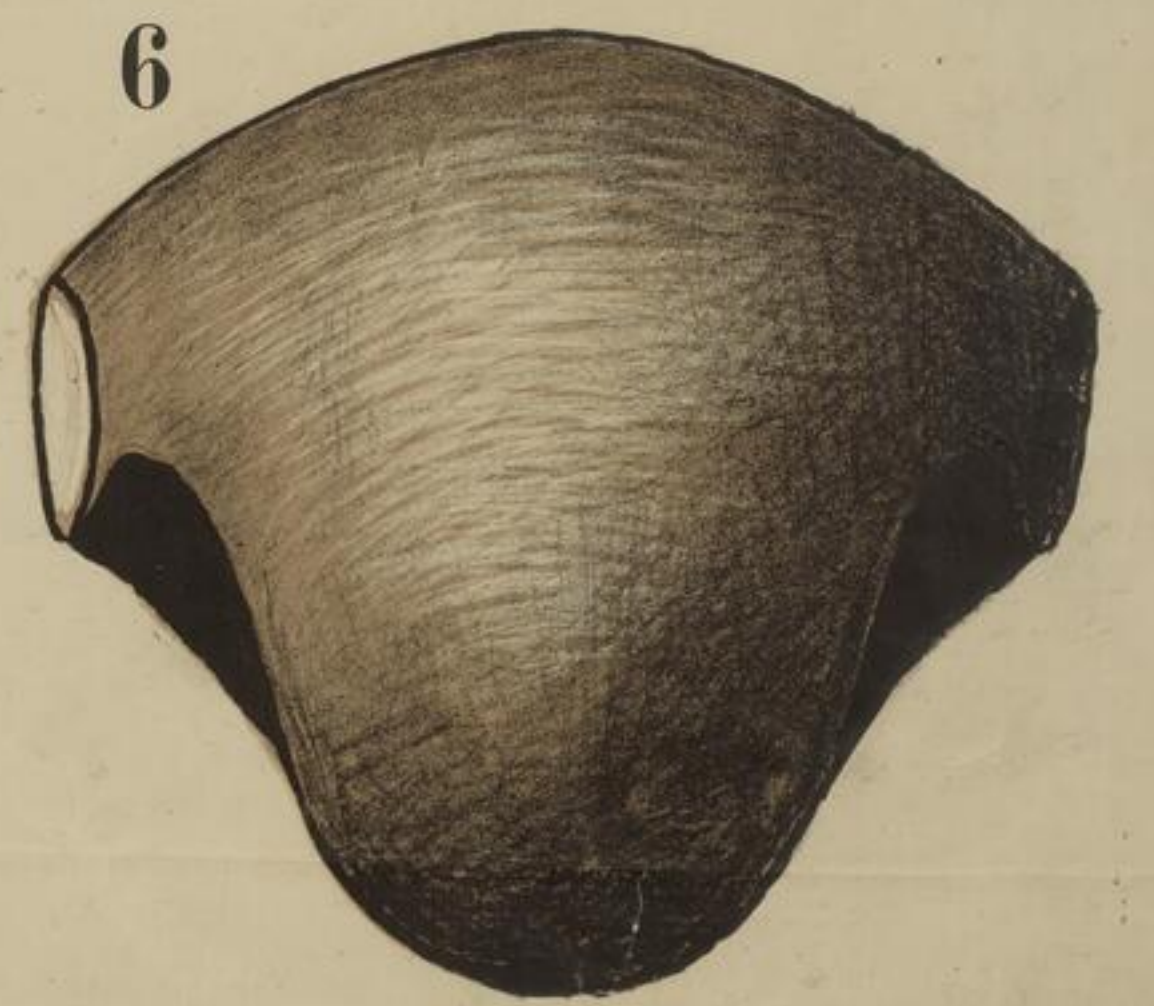
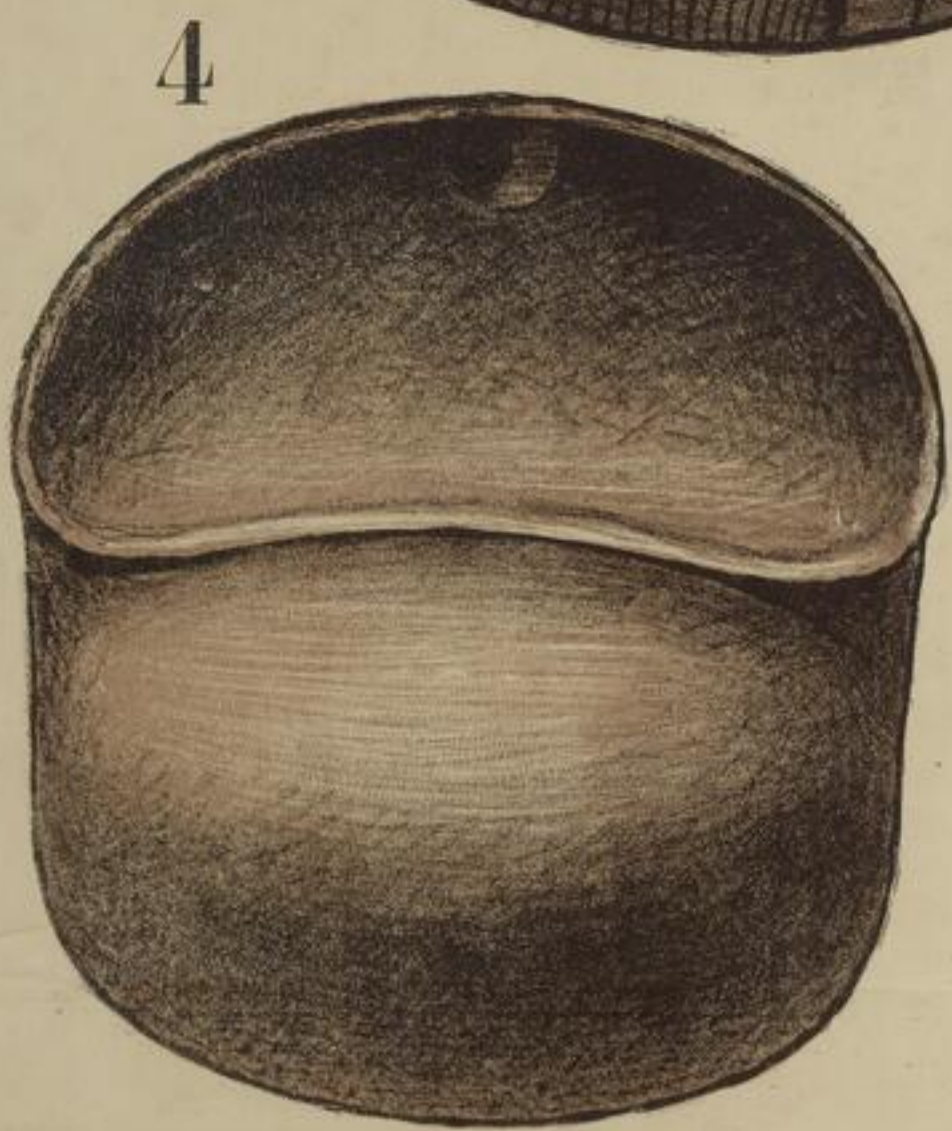
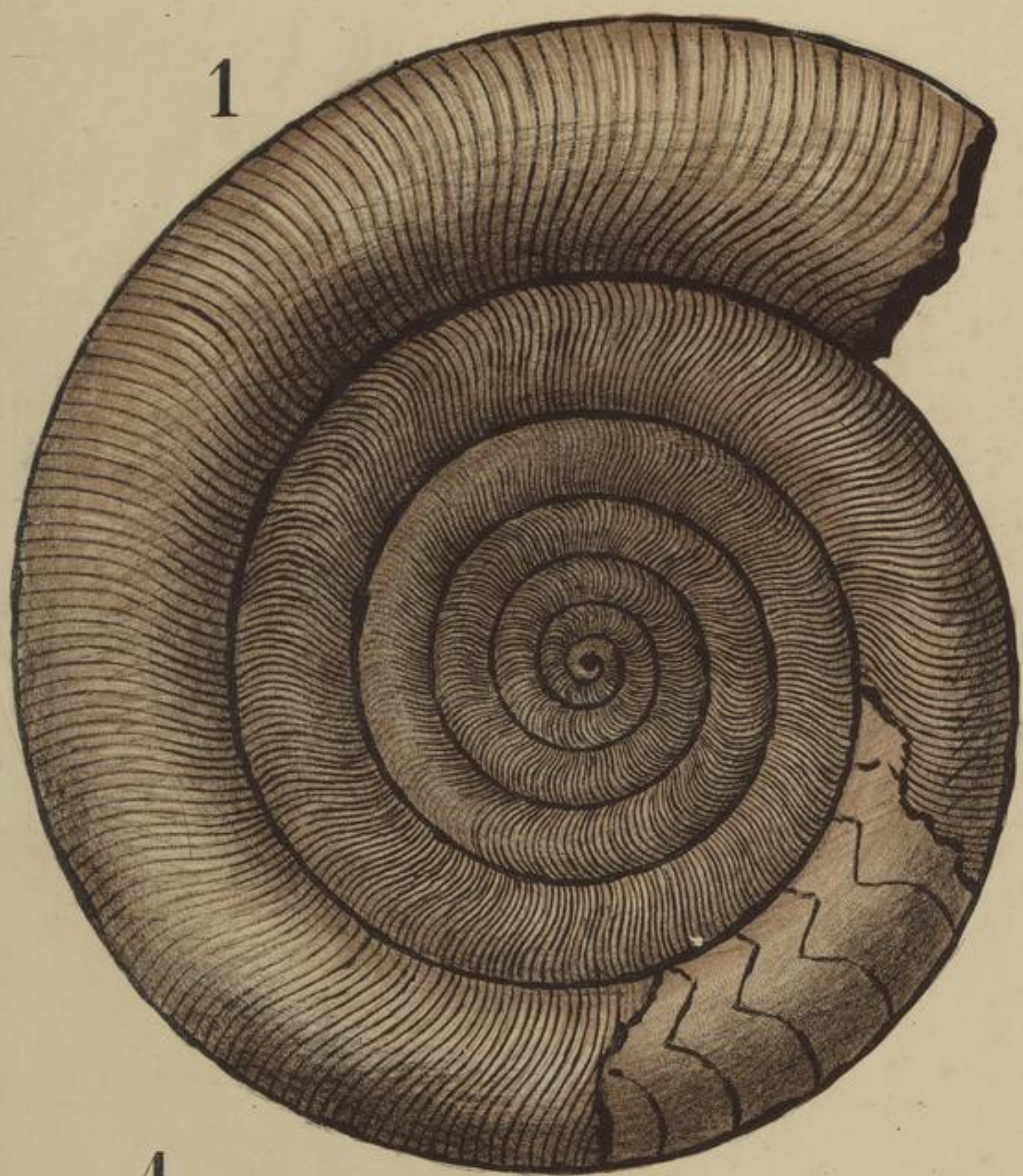


Cephalopoda.

L.L.

Mollusca.

Tetrabranchiata.



1. Clymenia undulata. 2. Goniatites plebejus. 3. G. sphaericus. 4-7. Embryonalkammern (vgl. Text.) 8. Goniatites multilobatus. 9. Arcestes intuslabiatus. 10. Sageceras Haidingeri. 11. Lobites delphinocephalus.