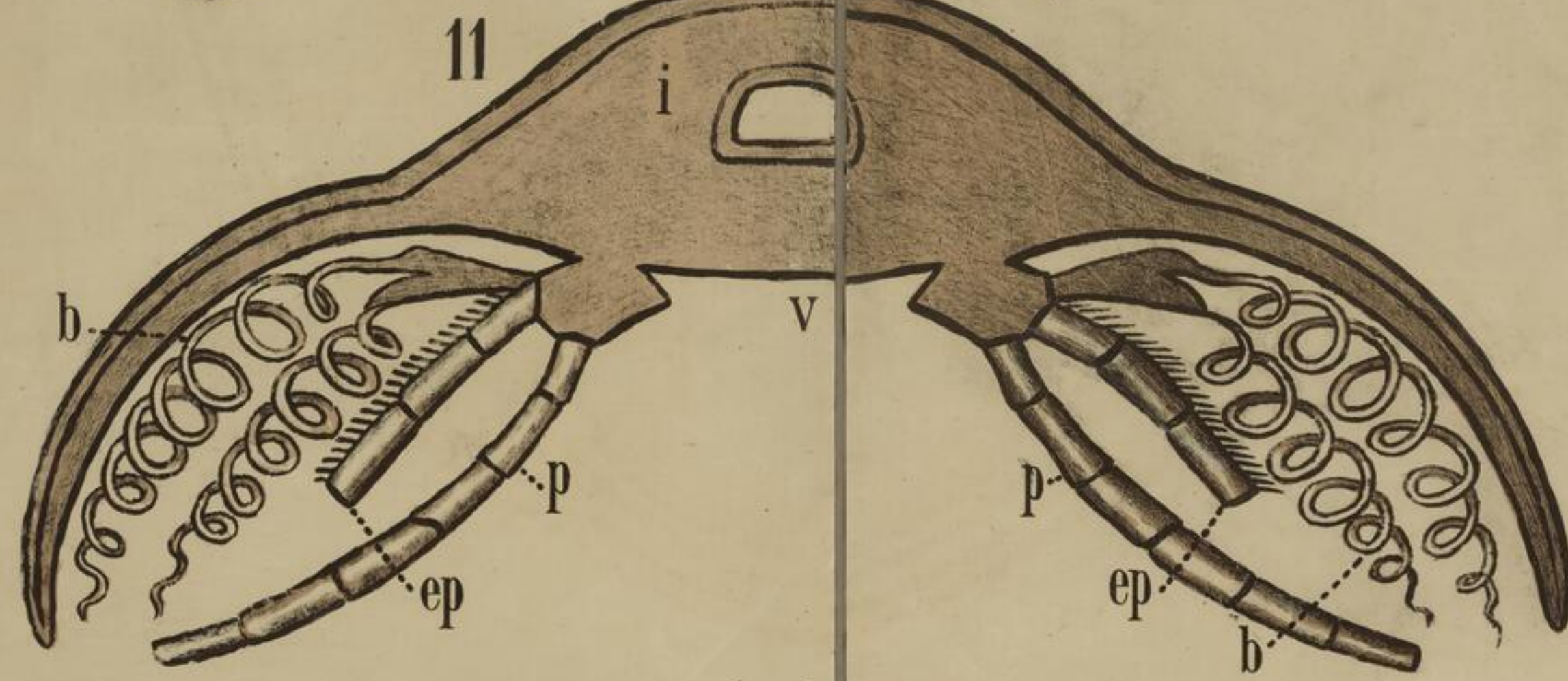
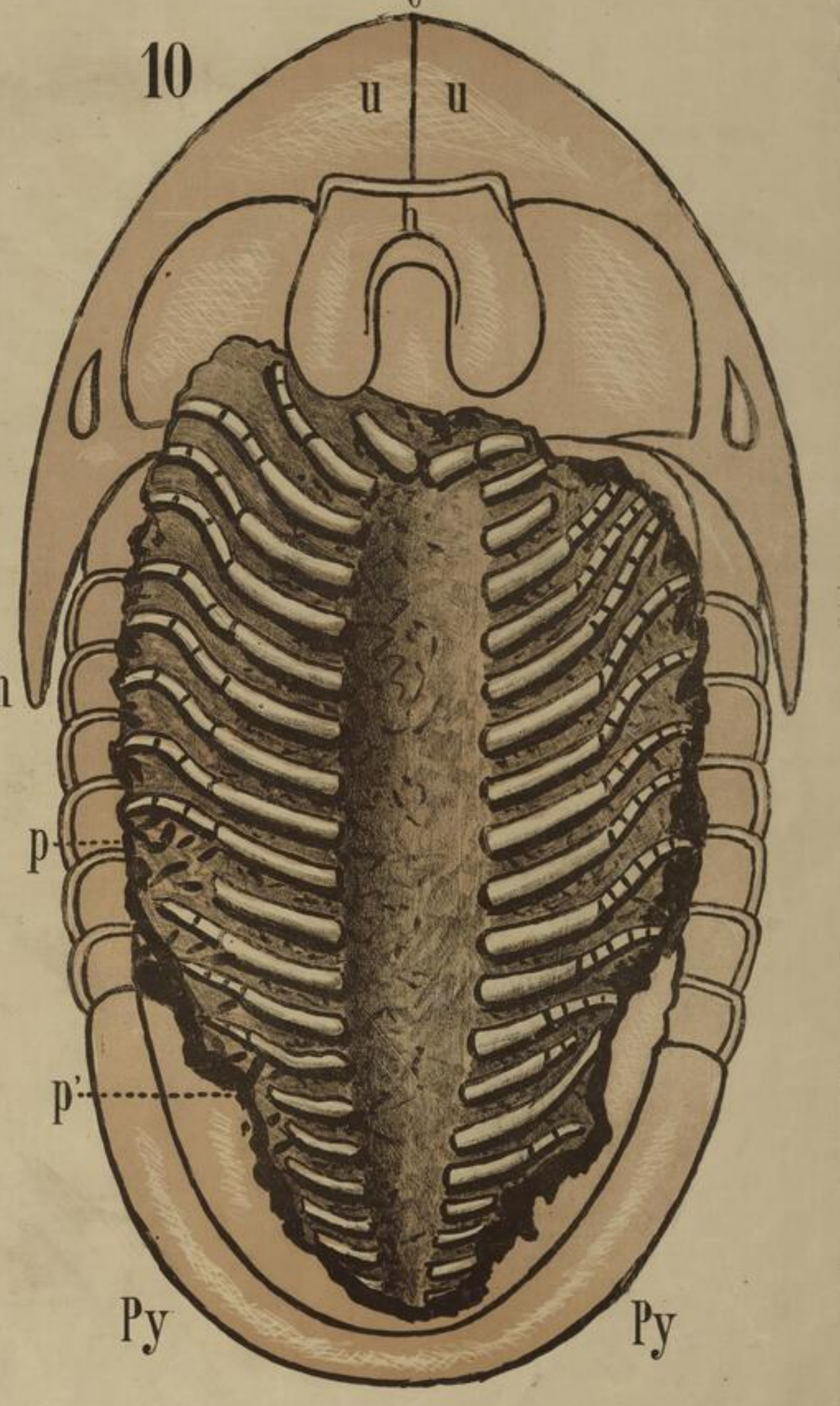
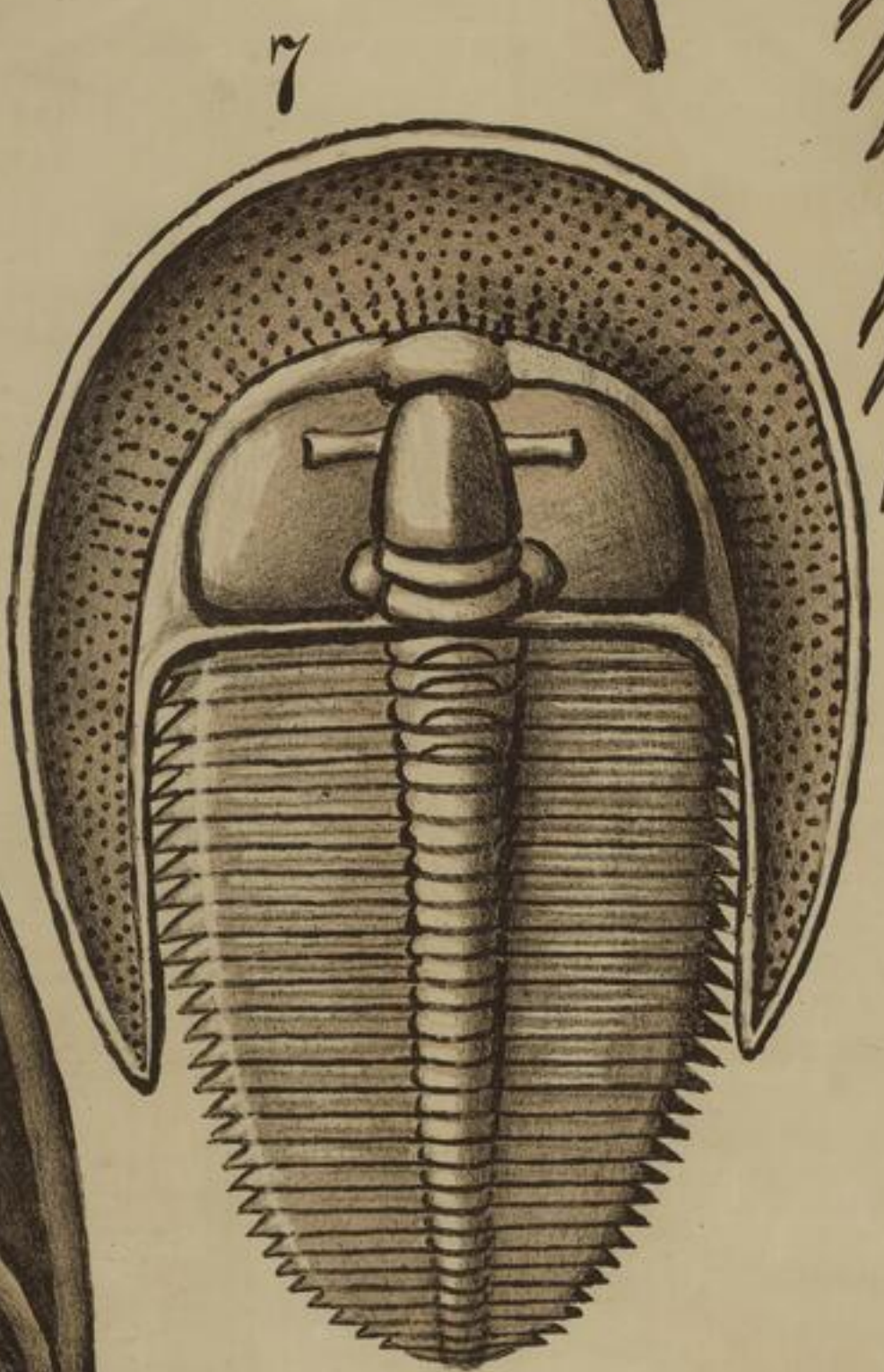
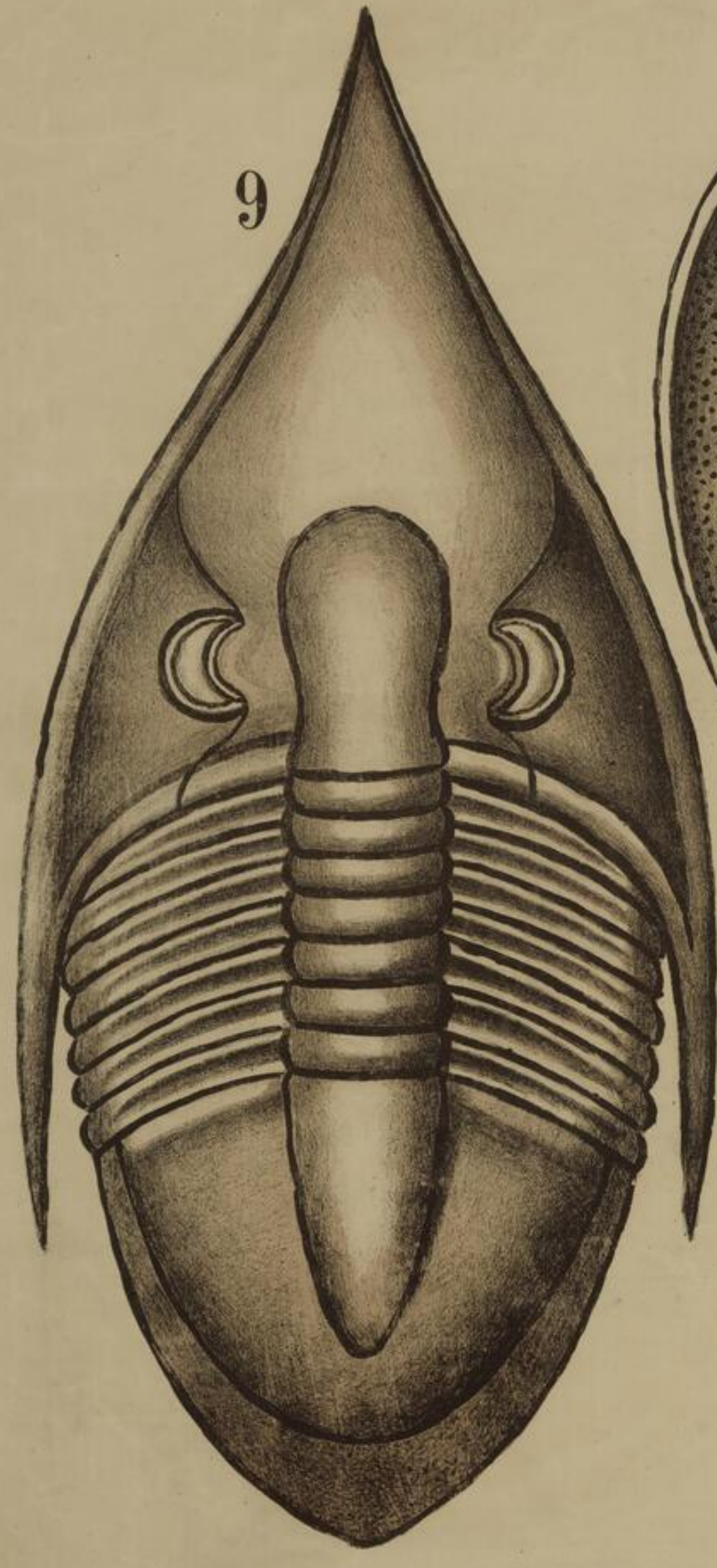
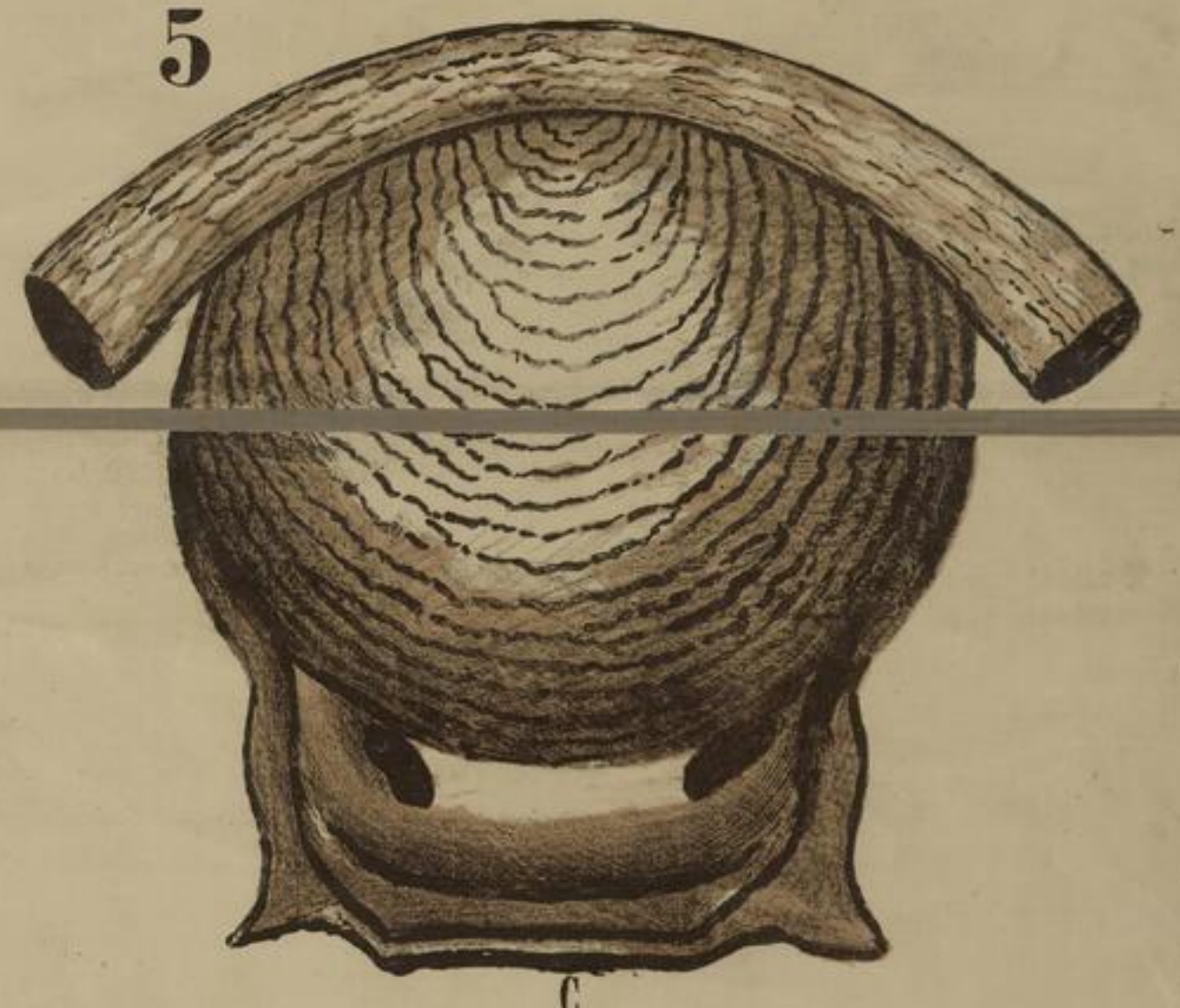
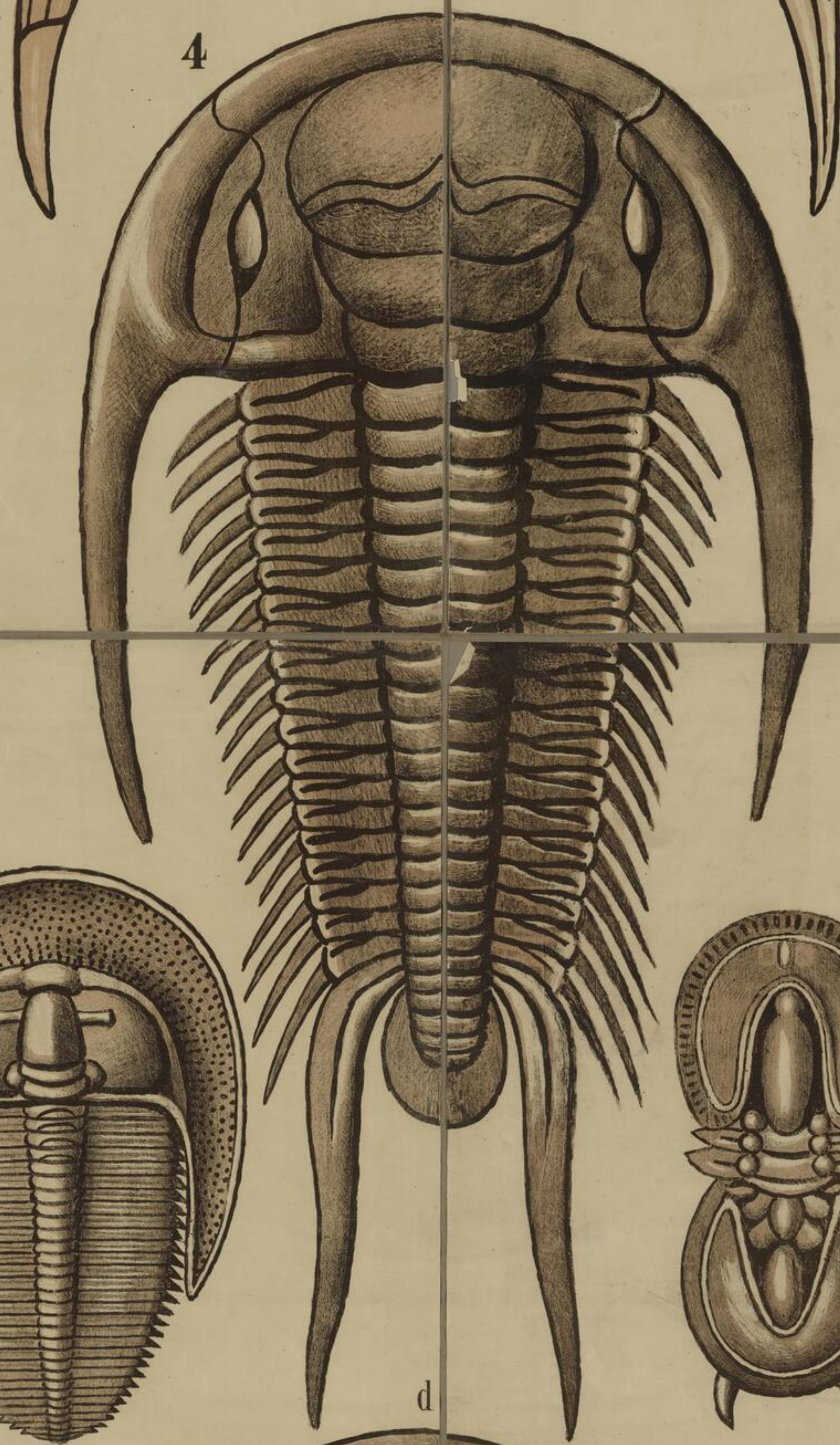
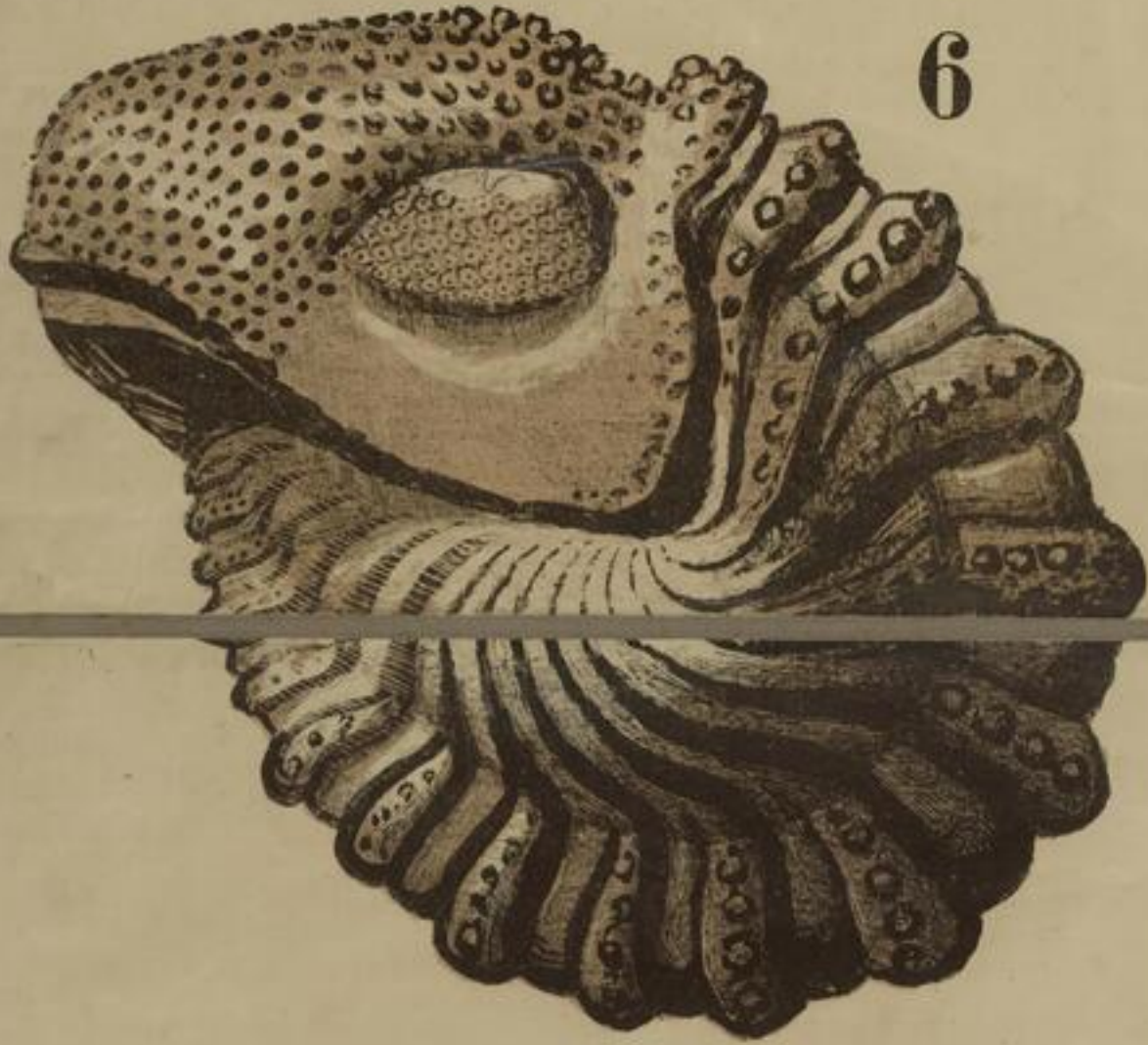
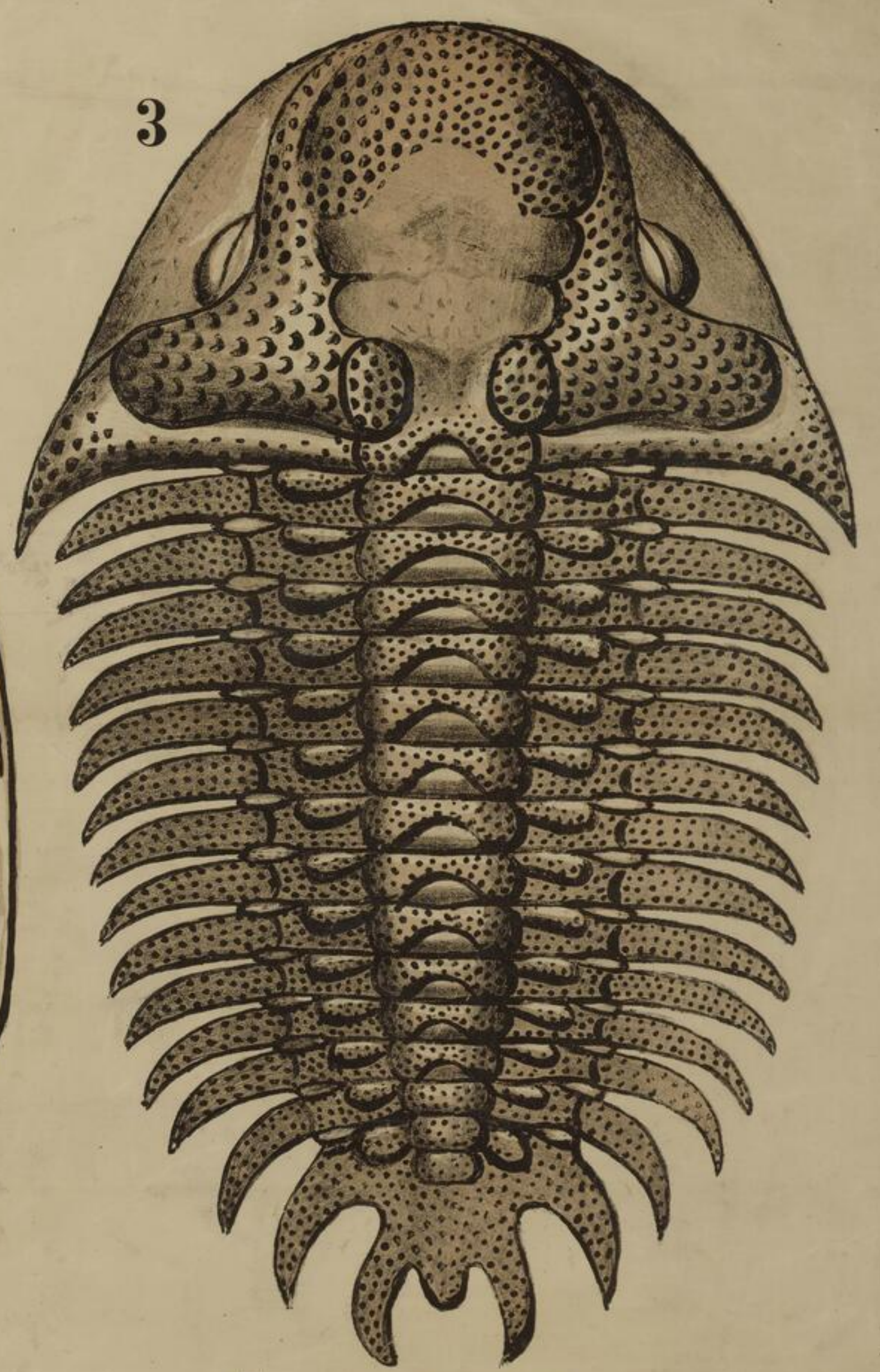
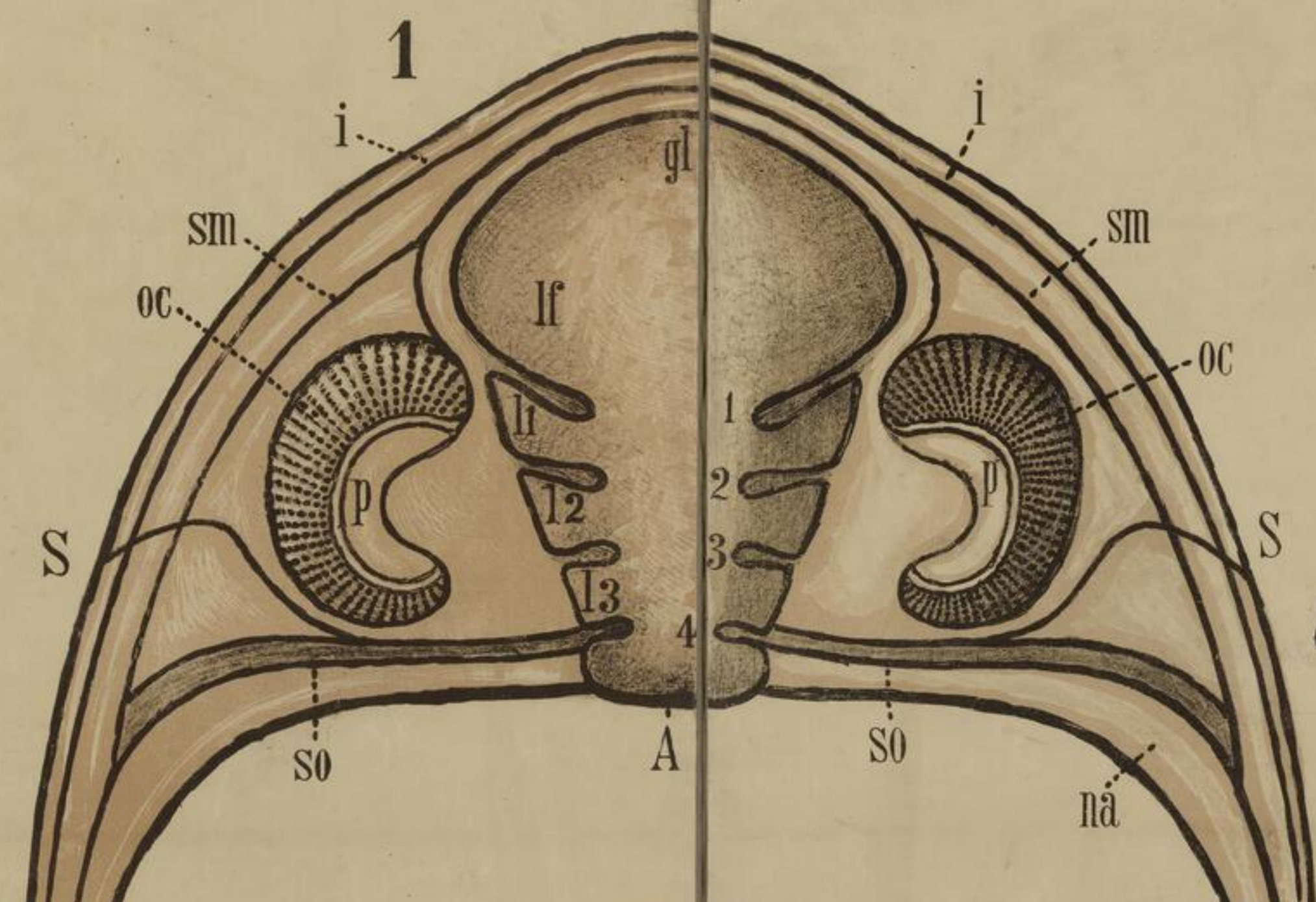
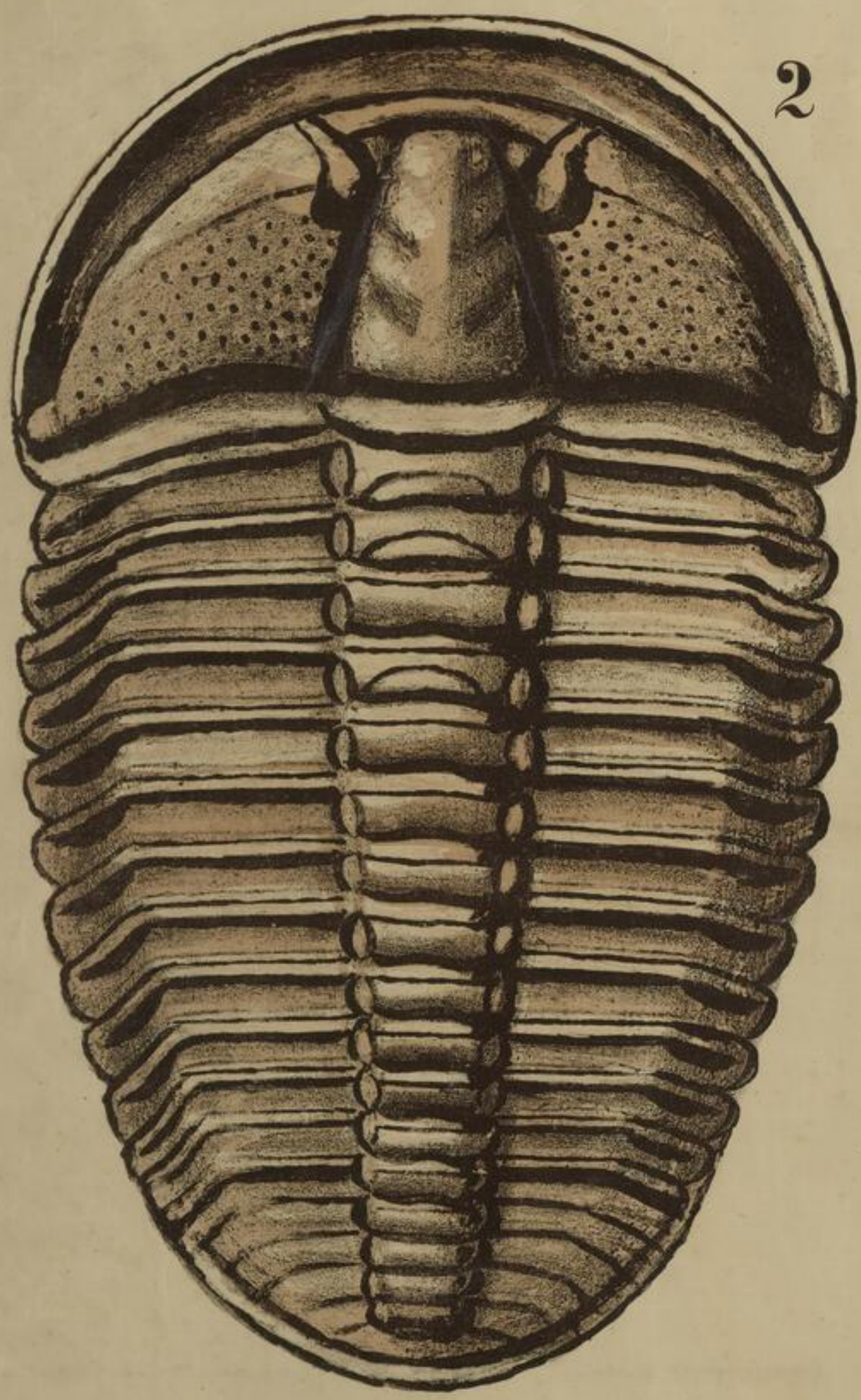


Crustacea.

Arthropoda.

Trilobitae.



1. Dalmania Hausmanni. 2. Conocephalites Sulzeri. 3. Cheirurus insignis. 4. u. 5. Paradoxides Bohemicus. 6. Phacops latifrons. 7. Harpes unguis. 8. Agnostus pisiformis. 9. Megalaspis extenuatus. 10. Asaphus megalistos. 11. Rumpsegment eines Trilobiten im Querschnitt.

Zittel, Palaeontologische Wandtafeln. Taf. XXX.

Druck und Verlag von Theodor Fischer in Cassel.



